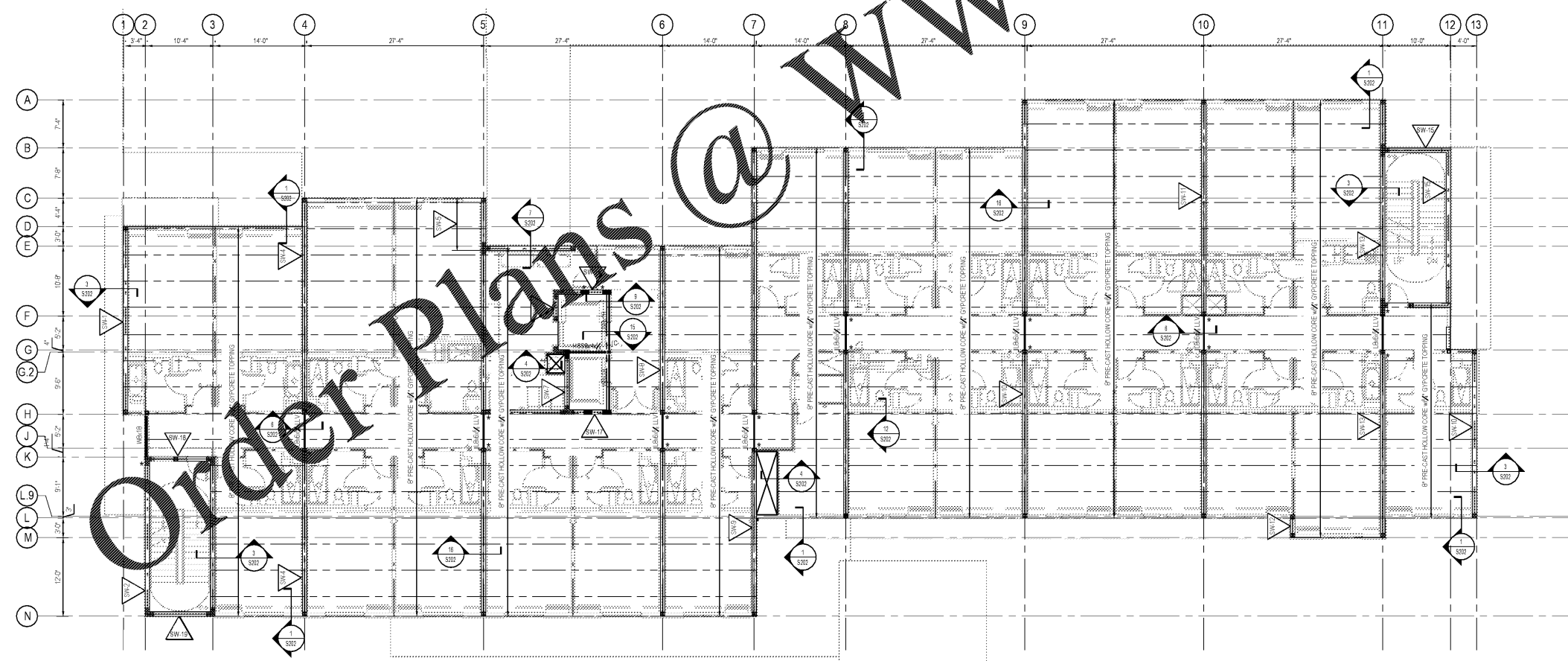
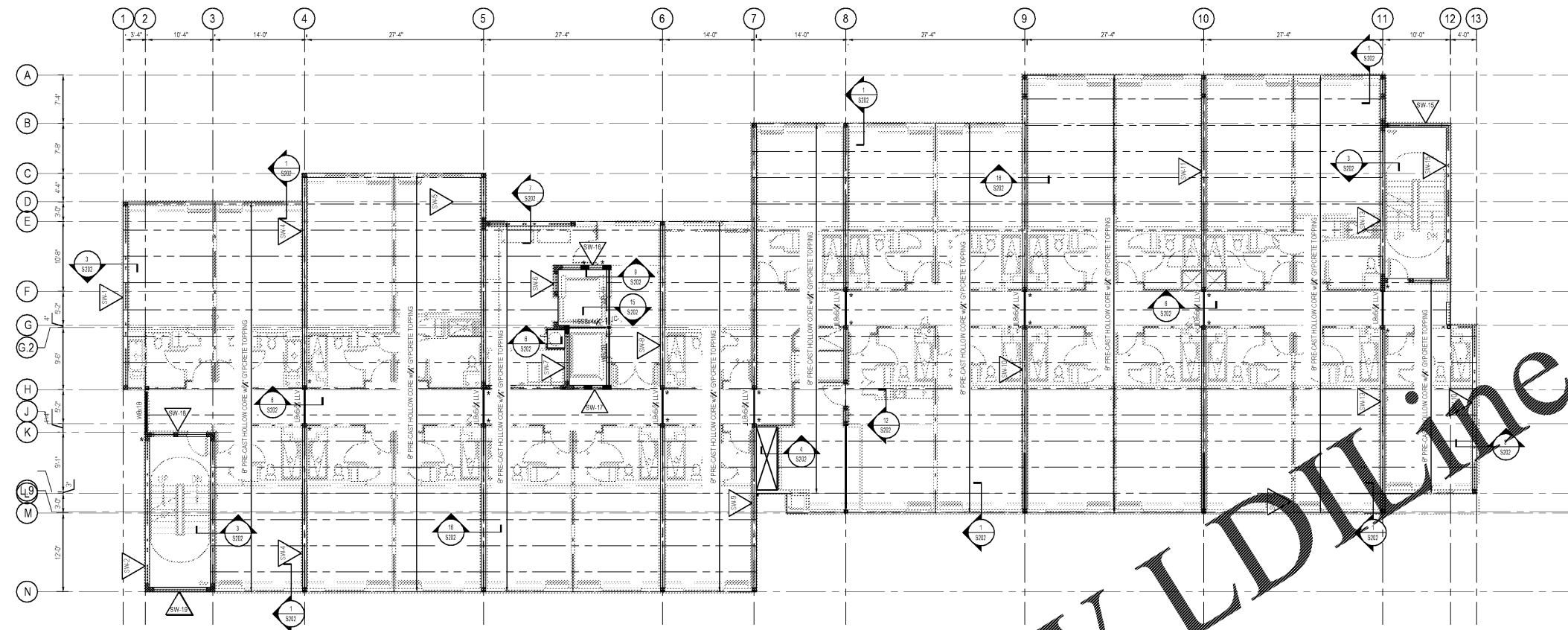


30 x 42



- STRUCTURAL NOTES:**
1. TR INDICATES TOP OF STEEL ELEVATION ABOVE REFERENCE SLAB ELEVATION
 2. ALL TR SLOPES ARE CONSTANT BETWEEN POINTS OF GIVEN ELEVATION
 3. SEE SHEET S201 FOR DESIGN CRITERIA
 4. SEE SHEET S202 - S208 FOR ADDITIONAL SECTIONS AND DETAILS
 5. ALL SECTIONS TYP U N D
 6. ALL MASONRY WALLS SHALL BE ADEQUATELY SUPPORTED BY TEMPORARY BRACING DURING CONSTRUCTION AND BACKFILLING. BRACING SHALL REMAIN IN PLACE UNTIL ALL FLOOR AND ROOF CONNECTIONS ARE COMPLETE.
 7. VERIFY ALL MASONRY OPENINGS MATCH DWGS

- STRUCTURAL LEGEND:**
- (C7) COLUMN DESIGNATION - SEE SCHEDULE ON S201
 - MB BEARING
 - TR TO BE USED TO INDICATE TRUSS BEARING ELEVATION ABOVE FINISHED FLOOR
 - PL PLANK BEARING ELEVATION ABOVE FINISHED FLOOR
 - TP INDICATES TOP OF PLANK ELEVATION ABOVE FINISHED FLOOR
 - TR TYPICAL BEAM BEARING LOCATION - SEE 9, 10 & 11R202
 - TR INDICATES TRUSS BEARING ELEVATION ABOVE FINISHED FLOOR
 - INDICATES OPENING IN PRECAST. PRECAST MANUFACTURER TO COORDINATE OPENING LOCATIONS. SEE SECTION 4-S202
 - MW MASONRY WALL DESIGNATION - SEE SCHEDULE ON S202
 - SW SHEAR WALL DESIGNATION - SEE SHEET S203-S207
 - 5/8" F.R.T. EXTERIOR GRADE PLYWOOD SHEATHING ATTACH TO JOIST W/ 10 24x2" LONG SCREWS W/ SELF-DRILLING POINT # 4 @ 8" EDGES AND 6" @ IN INTERMEDIATE

FLOOR DESIGN LOADS

| | |
|--|-------------------|
| DEAD LOADS: | |
| 8" HOLLOW CORE + 3/4" GYPCRETE | 85 psf |
| COLLATERAL | 10 psf |
| PARTITION | 10 psf |
| LIVE LOADS: | |
| QUEST ROOMS | 40 psf |
| CONFERENCE | 40 psf |
| STORAGE/MECH. ROOMS | 80 psf |
| PUBLIC ROOMS | 100 psf |
| STAIRWAYS | 100 psf |
| HANDRAILS | 50 plf OR 200 lbs |
| CONCENTRATED LOAD APPLIED IN ANY DIRECTION | |

1 HOUR FIRE RATED PARTITION
2 HOUR FIRE RATED PARTITION

March Adams & Associates
1000 N. Main St., Suite 100
Chattanooga, Tennessee 37404
Phone: 423.266.6673
Fax: 423.266.6673

COURTYARD by MARRIOTT
NEW HOTEL
SMYRNA, TENNESSEE
WWW.DAVIDRCARTER.NET
DAVID R. CARTER AND ASSOCIATES

ISSUE DATE 10-18-19
REVISION LOG



LEVEL 3 FRAMING PLAN S103