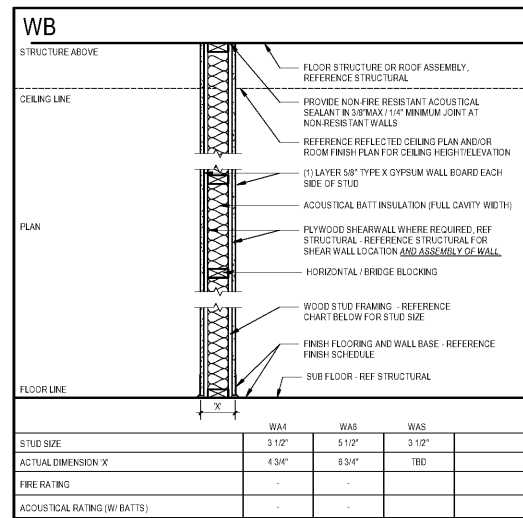
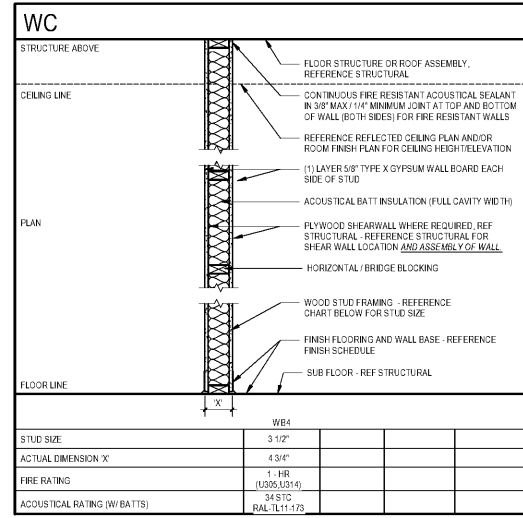


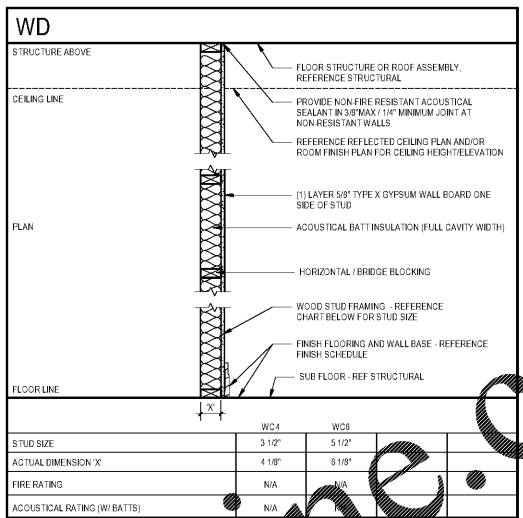
1 WOOD - WA
1" = 1'-0"



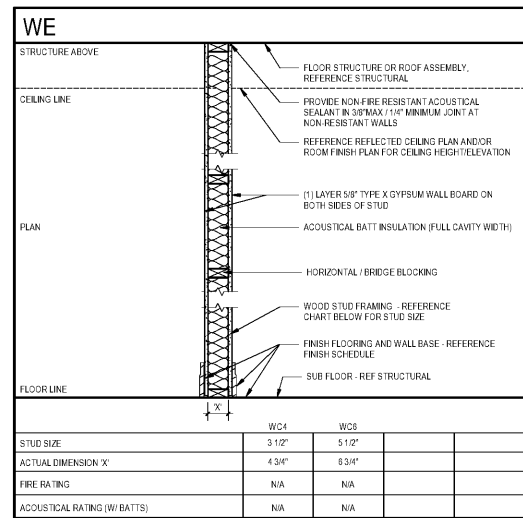
2 WOOD - WB
1" = 1'-0"



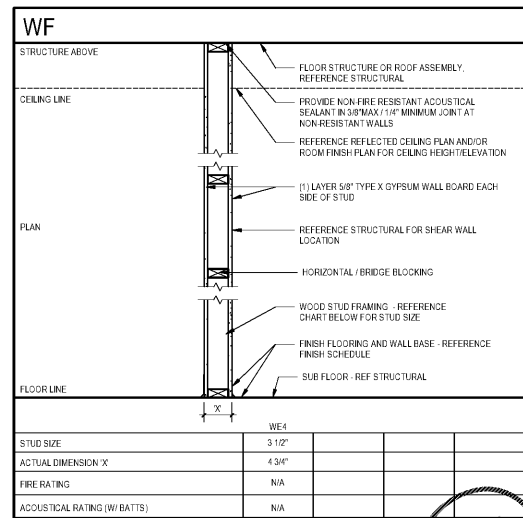
3 WOOD - WC
1" = 1'-0"



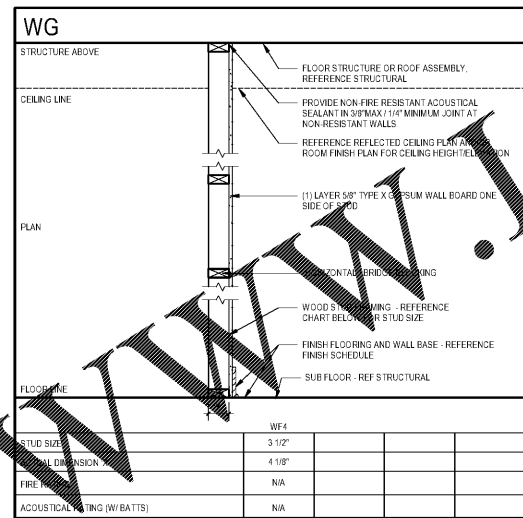
4 WOOD - WD
1" = 1'-0"



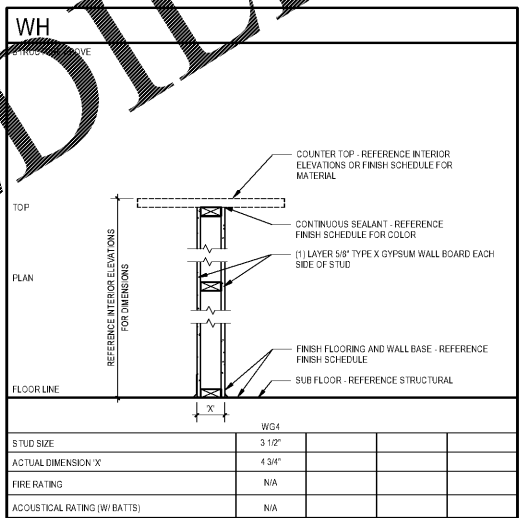
5 WOOD - WE
1" = 1'-0"



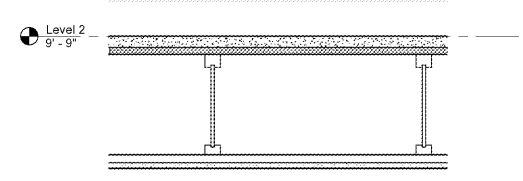
6 WOOD - WF
1" = 1'-0"



7 WOOD - WG
1" = 1'-0"



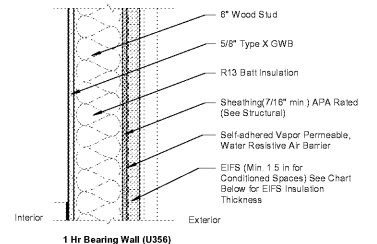
8 WOOD - WH
1" = 1'-0"



9 Floor Ceiling System
1 1/2" = 1'-0"



10 Roof Ceiling System
1 1/2" = 1'-0"



11 1 Hr Bearing Wall (U356)

General Notes:
See Structural for Details and Locations of Shear Wall

EIFS Types:
ES 1 - S10 Color 37111 Light Gray, Limestone finish on 2" of insulation
ES 2 - S10 Color 37107 Saffin Milano, Limestone finish on 3" of insulation
ES 3 - 3M 2063 20 Downpour Blue, Limestone finish on 1 1/2" of insulation
ES 4 - S10 Color 37101 Charcoal, Limestone finish on 1" of insulation

Wall Types:
EWS 1 - Perimeter Wall w/ EIFS of Masonry
EWS 2 - Exterior Unit Walls Facing the Courtyard
EWS 3 - Exterior Bearing Wall (U356) See Chart Below for EIFS Insulation Thickness

12 EWS 3 - Exterior Bearing Wall (U356) See Chart Below for EIFS Insulation Thickness
1 1/2" = 1'-0"

Order Plans @