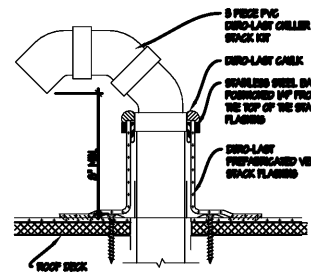


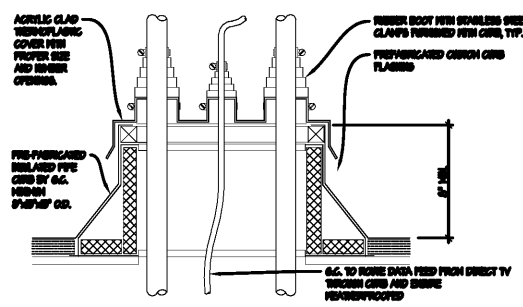
THIS DETAIL IS BASED ON DURO-LAST DETAIL 4070



03 GOOSE-NECK CONDENSER PIPE DETAIL

SCALE: 1 1/2" = 1'-0"

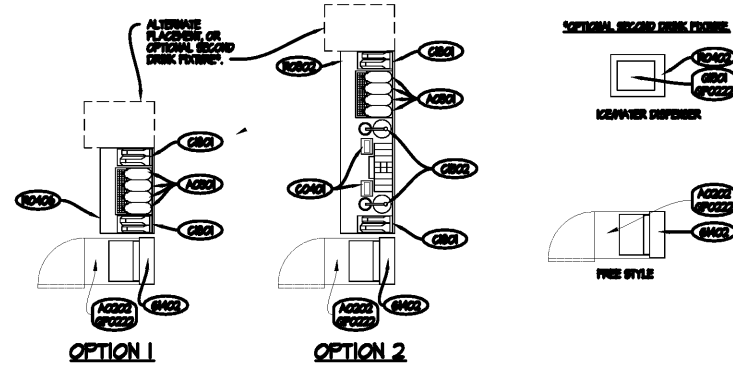
THIS DETAIL IS BASED ON DURO-LAST DETAIL 4070



02 CONDENSER PIPE CURB DETAIL

SCALE: 1 1/2" = 1'-0"

DRINK STAND OPTIONS



NOTE: OPTIONAL CONFIGURATIONS ABOVE ARE SHOWN FOR REFERENCE ONLY. REFER TO CONSTRUCTION PLAN CONFIGURATION BELOW FOR SELF SERVE DRINK TOWER LOCATION MAY BE AT EITHER END OR BOTH. COORDINATE FINAL ORIENTATION AND PLACEMENT WITH OWNER'S REPRESENTATIVE.

SYMBOL LEGEND

Table with columns SYMBOL and DESCRIPTION. Symbols include a circle with 'E', a circle with 'E', and a circle with 'XX'. Descriptions include EQUIPMENT TAGS and ARTPACK AND WAYFINDING TAGS.

ARTPACK & WAYFINDING LEGEND

Table with columns SYMBOL and DESCRIPTION. Symbols include AP-01 through AP-07. Descriptions include Wendy's Local Love, Wink Wall Framed Graphic, Interior Reader Board, Cause Painting and Plaque, Quality is Our Recipe, and Placeholder Large Format Art.

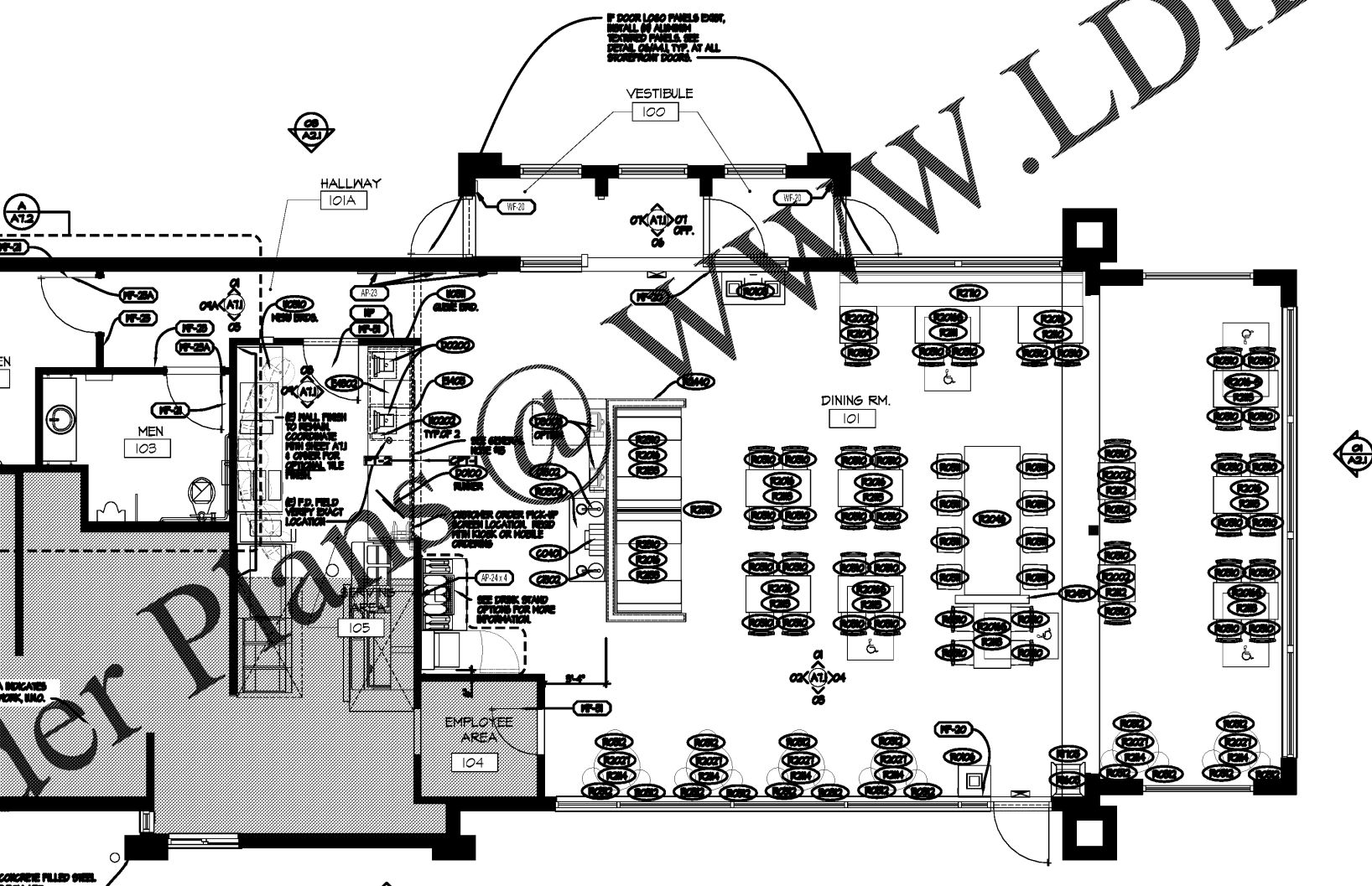
ARTPACK & WAYFINDING LEGEND

Table with columns SYMBOL and DESCRIPTION. Symbols include NF-01 through NF-21. Descriptions include Nutrition Poster, Tactile Exit Sign, Hand Washing Sign, Family Restroom Sign, Men's Restroom Sign Accessible, Men's Room Sign, Men's Room Sign Accessible, Women's Room Sign, Women's Room Sign Accessible, Women's Restroom Sign, Women's Restroom Sign Accessible, Employee Only, and Not an Entrance.

FLOOR & FINISH PLAN GENERAL NOTES

- 1. GC SHALL BE RESPONSIBLE FOR VERIFYING '40-BUILT' CONDITIONS AND LAYING OUT WORK BEFORE PROCEEDING WITH WORK.
2. EXTERIOR FINISHES ARE NOTED ON EXTERIOR ELEVATIONS.
3. SEE INTERIOR ELEVATIONS FOR FINISHES OF NEW INTERIOR WALL FINISHES.
4. KITCHEN EQUIPMENT SUPPLIER SHALL VERIFY CRITICAL DIMENSIONS, FINISHES AND ELECTRICAL SPECIFICATIONS FOR EQUIPMENT SUPPLIED BY THE KITCHEN EQUIPMENT DISTRIBUTOR.
5. ELECTRICAL AND PLUMBING CONTRACTOR TO MAKE FINAL CONNECTION TO DISBURSEMENT.
6. DESIGN BIDDING IS FOR EXISTING FINISHES TO BE REPLACED WITH EQUIVALENT NEW FINISHES, UNLESS COORDINATE WITH OWNER FOR OPTIONAL FINISH UPDATES.
7. GC TO PROVIDE AND INSTALL CRACK ISOLATION/WATERPROOF MEMBRANE AT ALL AREAS OF PORCELAIN CERAMIC AND MARBLE TILES.
8. FURNITURE SHALL BE RESPONSIBLE FOR THE REMOVAL OF HARDWARE, SWITCH AND OUTLET COVERS, ETC., AND REINSTALLATION OF SAME AFTER FINISHES.
9. REMOVE OR REPAIR SURFACES DAMAGED BY SUBSEQUENT WORK AS DIRECTED BY GENERAL CONTRACTOR. THE COST OF SUCH REPAIRS SHALL BE BORNE BY THE CONTRACTOR.
10. THE CONTRACTOR IS RESPONSIBLE FOR PROVIDING PROPER PROTECTION AGAINST DAMAGE TO EXISTING FURNITURE, ADJACENT FINISHED FLOORING, ETC. IF APPLICABLE.
11. REFER TO REFLECTED CEILING PLAN FOR CEILING TYPES, HEIGHTS, & FINISHES.
12. COORDINATE WITH 4 IN-PI SYSTEM REQUIREMENTS WITH FINISH REPRESENTATIVE.
13. FOR NEW DRINK STATIONS BEING ADDED, NEW DRINK STATION ARE REQUIRED. COORDINATE TO BE INSTALLED ON EXISTING WALLS SUPPLIED WITH FINISHES. TO INSTALL EXISTING WALLS AND COORDINATE TO BE INSTALLED WITH FINISHES. TO INSTALL NEW FINISHES FOR COORDINATE WITH FINISH REPRESENTATIVE. COORDINATE FINAL LOCATION OF CONDENSER AND PIPING WITH FINISHES REPRESENTATIVE AND ALL FINISH AND FURNITURE CONTRACTORS. VERIFY FINISHES REPRESENTATIVE'S MANUFACTURER'S STANDARD DETAILS TO BE USED FOR FINISHES.
14. VERIFY LOCATION OF EXISTING CONDENSER TO BE REPLACED. PROVIDE NEW DRAIN TO SERVE DRINK STAND. VERIFY LOCATION IS NOT AVAILABLE. SANITARY FLOOR SLAB AS REQUIRED FOR INSTALLATION OF NEW DRAIN AND BACK TO MATCH ADJACENT AFTER INSTALLATION. COORDINATE EXACT LOCATION.
15. IN SLOPE SURFACE COORDINATE 4 INCH FRONT CORNER BASE CABINET AS REQUIRED FOR OVERCARRY AND 1/2" SLOPE INCLUDING 10 INCH CORNER ICE BIN MOUNTING ICE BIN DRAIN FOR REEZE. VERIFY FINISH REPRESENTATIVE'S STANDARD DETAILS TO BE USED FOR FINISHES. COORDINATE WITH FINISH REPRESENTATIVE, INCLUDING ACCESS TO SAFE KEYS FROM RESTAURANT MANAGER.
GENERAL NOTES:
THE GENERAL CONTRACTOR SHALL PROVIDE A CONTINGENCY BID FOR WORK IN THE BACK OF HOUSING AREA BEYOND THE SCOPE OF THIS REFRESH BID ON THESE DOCUMENTS. COORDINATE ANY/ALL WORK BID, PROPOSED, OR REQUIRED WITH THE FINISHES REPRESENTATIVE PRIOR TO PURCHASING OR ORDERING ANY WORK BEYOND THE LIMITED SCOPE SHOWN ON THESE CONSTRUCTION DOCUMENTS.

EQUIPMENT SCHEDULE table with columns MARK, QTY, DESCRIPTION OF EQUIPMENT, REMARKS, FURNISHED BY, and INSTALLED BY. Lists items like Beverage System, Tea Dispenser, Ketchup Pump, POS Terminal, Kiosk, Front Counter, Bakery Case, Cash Register, Remote Condensing Unit, Ice Machine, Trash Receptacles, Condiment Stand, Chairs, Stools, Tables, and Table Bases.



01 FLOOR AND EQUIPMENT PLAN

SCALE: 1/4" = 1'-0"

Project information table including Site Number (03302), Base Model (30716), Asset Type (FRANCHISE), Classification (REFRESH LITE), Owner (TAR HEEL CAPITAL), Base Version (2016 JUL), Upgrade Classification (N/A), Project Year (2020), Furniture Package (UM BRIGHT), and Drawing Release (FALL 2019).

snid design ARCHITECTS logo and contact information: Design +, 1449 Bardonia Rd., Suite 303, Louisville, Kentucky 40204, (502) 454-9511, (502) 454-4111 (fax).

Wendy's logo and address: 1210 HIGHWAY 70 SOUTHWEST, HICKORY, NC. 28602.

Revision table with columns REV. DATE and DESCRIPTION. Includes dates like 12/12/2019 and 1/6/2020.

Project name: FLOOR & EQUIPMENT PLAN, Sheet Name: A1.1, and a circular seal for Kenneth Ray Brink, Registered Architect, Louisville, KY.

1/25/2020 9:13 PM, N:\Projects\2019-133 Wendy's Hickory, NC\Drawings\Sheet\03_30716_A1_1_FLOOR_PLAN.dwg, KenB