

PLUMBING FIXTURE SCHEDULE

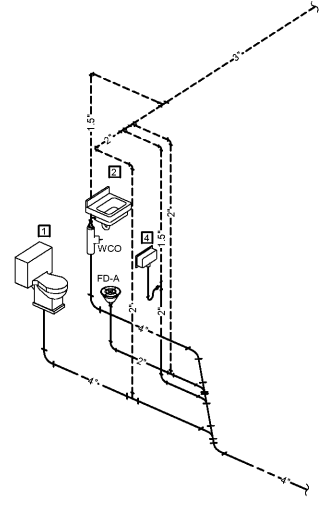
PLAN MARK	DESCRIPTION	MANUFACTURER	MODEL	TRIM	CONNECTION SIZES				NOTES
					CW (IN)	HW (IN)	W (IN)	V (IN)	
1	ADA FLOOR MOUNTED, FLUSH TANK, BOTTOM OUTLET WATER CLOSET	AMERICAN STANDARD	CADET PRO - 215AB.104	16.5" HIGH, ELONGATED BOWL, VITREOUS CHINA, FLOOR MOUNTED, FLUSH TANK, SIPHON JET, 1.28 GALLONS PER FLUSH, OVERSIZED 3" FLUSH VALVE WATER CLOSET WITH AMERICAN STANDARD WHITE "LAUREL" SEAT S311.012 LESS COVER.	0.5	-	4	2	FIXTURE TO BE WHITE, MOUNT CONTROLS ON ACCESSIBLE SIDE OF WATER CLOSET. PROVIDED BY CONTRACTOR. FIXTURE ASSEMBLY MUST BE APPROVED AND INSTALLED PER ADA.
2	16.5 X 17 WALL HUNG LAVATORY	AMERICAN STANDARD	DECLYN - 0321.026	VITREOUS CHINA, CONCEALED ARM CARRIER SUPPORT WITH STANCHIONS TO FLOOR, WALL HUNG LAVATORY WITH REAR OVERFLOW, INTEGRAL BACK, 4" CENTER FAUCET HOLES, MCGUIRE #155A GRID DRAIN WITH TAILPIECE, MCGUIRE #2165CCLK LOOSE KEY COMPRESSION ANGLE STOP VALVES WITH RISERS, ESCUTCHEONS, MCGUIRE #8370CF 1.25" TI GUAGE TUBULAR CHROME PLATED BRASS ADJUSTABLE P-TRAP AND WASTE ARM WITH CLEANOUT PLUG. FIXTURE SHALL BE WHITE. PROVIDE WATTS SERIES USG-B MIXING VALVE OR EQUAL. FAUCET: AMERICAN STANDARD - CERAMIC 2000.100, 4" CENTER, SINGLE HANDLE, CENTER SET POLISHED CHROME, ALL METAL HANDLE, QUATER TURN CERAMIC CARTRIDGES, GRID STRAINER, 0.5 GPM FLOW RESTRICTOR.	0.5	0.5	1.5	1.5	PROVIDE INSULATION KIT ON ALL ADA FIXTURES WITH EXPOSED TRAP AND SUPPLIES. TRUBORO GUARD INSULATION KIT. SEE ARCHITECTURAL DRAWINGS FOR MOUNTING HEIGHTS. PROVIDED BY GENERAL CONTRACTOR.
3	CHILLED WATER DISPENSER	INNOWAVE CHILLER	--	120V SINGLE PHASE WATER DISPENSER WITH 0.5" COLD WATER CONNECTION.	0.5	-	-	-	SUPPLIED BY OWNER AND INSTALLED BY CONTRACTOR.
4	DRAIN OUTLET BOX	GUY GREY	SS0B1	2" CENTER DRAIN, STAINLESS STEEL WITHOUT VALVES	-	-	2	1.5	PROVIDE 20 GAUGE COVER PAINTED TO MATCH ADJACENT WALL. MOUNT BOX AT 90" ABOVE FINISHED FLOOR.

DRAINAGE PIPE SPECIALTY SCHEDULE

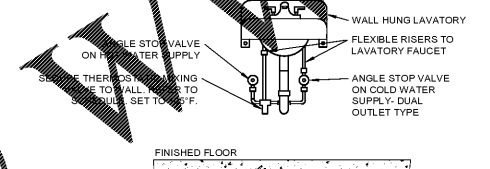
PLAN MARK	DESCRIPTION	MANUFACTURER	MODEL	TRIM	NOTES
FD-A	6" ROUND FLOOR DRAIN	ZURN	Z415B	DURA-COATED CAST IRON BOTTOM OUTLET FLOOR DRAIN WITH 6" POLISHED NICKEL BRONZE STRAINER, AND ADJUSTABLE COLLAR. CLEAN AND POLISH STRAINER AFTER INSTALLATION. PROVIDED BY GENERAL CONTRACTOR. PROVIDE SURE SEAL OR EQUIVALENT WATERLESS TRAP PRIMER FOR ALL FLOOR DRAINS.	DRAIN SIZE SHALL MATCH SANITARY BRANCH SERVING DRAIN. REFERENCE PLANS FOR SIZE.
WCO	FINISHED WALL CLEANOUT	ZURN	Z1441	DURA-COATED CAST IRON BODY WITH ROUND, SMOOTH STAINLESS STEEL ACCESS COVER AND SECURING SCREW. PROVIDED BY GENERAL CONTRACTOR.	CLEANOUT TO BE FULL SIZE OF SOIL PIPE UP TO AND INCLUDING 4-INCH ID. REFERENCE PLANS FOR SOIL PIPE SIZE.

WATER HEATER SCHEDULE

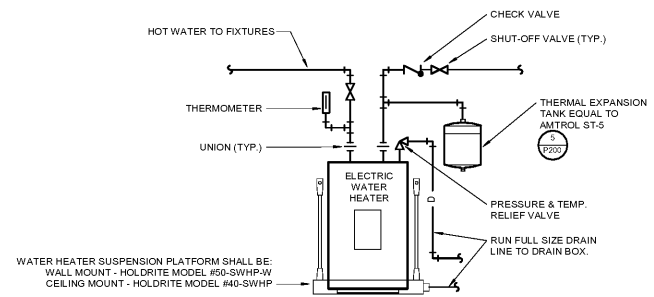
PLAN MARK	MANUFACTURER	MODEL	TYPE	GALLON CAPACITY	GPH @ 90 F	WATTS	ELECTRICAL DATA				NOTES
							VOLTAGE	PHASE	MCA	MCCP (A)	
WH1	A.O. SMITH	DEL-6	ELECTRIC	6	7	1500	120	1	16	20	SEE NOTES



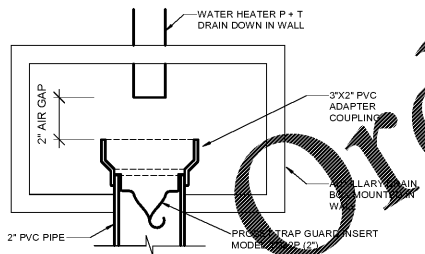
6 WASTE AND VENT RISER
SCALE: NOT TO SCALE



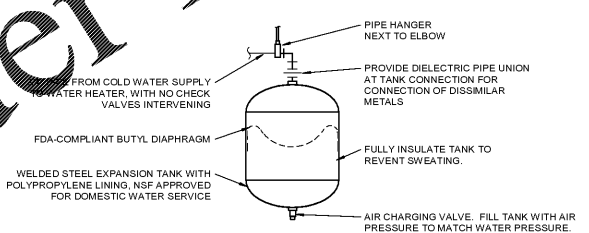
4 THERMOSTATIC MIXING VALVE DETAIL
SCALE: NOT TO SCALE



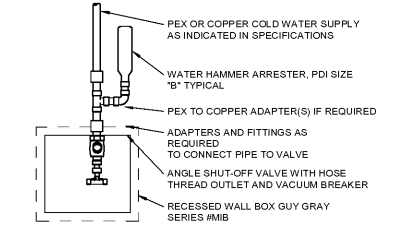
2 WATER HEATER DETAIL
SCALE: NOT TO SCALE



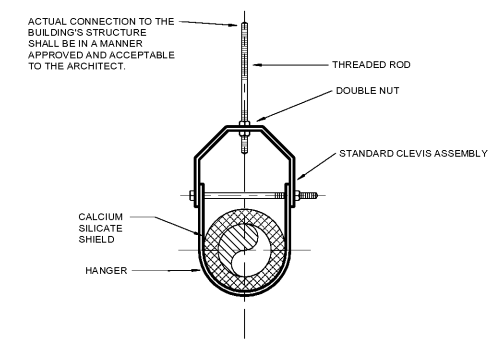
7 P + T DRAIN BOX DETAIL
SCALE: NOT TO SCALE



5 EXPANSION TANK
SCALE: NOT TO SCALE



3 CHILLED WATER DISPENSER CONNECTION DETAIL
SCALE: NOT TO SCALE



1 PIPE CLEVIS HANGER DETAIL
SCALE: NOT TO SCALE

SCHEDULE LEGEND

ABBREVIATED SCHEDULE HEADINGS	
EFFICIENCY	MINIMUM EFFICIENCY OF WATER HEATER
GPH	GALLONS PER HOUR
HP	HORSEPOWER
LOAD	NOMINAL CONNECTED GAS LOAD TO UNIT, USED TO SIZE GAS PIPING.
NPSH	NET POSITIVE SECTION HEAD
OUTPUT	MINIMUM REQUIRED OUTPUT TO MEET GPH RISE AS SCHEDULED
RPM	REVOLUTIONS PER MINUTE

WATER HEATER SCHEDULE

PTRV	PRESSURE & TEMPERATURE RELIEF VALVE
------	-------------------------------------

chkloverarchitect
8813 PENROSE LANE SUITE 400 • LENEXA, KS 66219
PH: 913.649.8181 • FX: 913.649.1275 • WWW.CKLOVER.NET

THIS DRAWING has been prepared by the Architect, or prepared under his direct supervision or in an adjustment of service and is intended for use only on this project. All drawings, specifications, notes and details, including the overall layout, form, arrangement, and composition of spaces and elements portrayed, constitute the original unpublished work of the Architect. Any reproduction, use, or disclosure of the information contained herein without the written consent of the Architect is strictly prohibited.

© 2019 H.C. KLOVER ARCHITECT

THE ARCHITECT DISCLAIMS responsibility for the existing building structure and conditions, existing conditions, elements, or any drawings, drawings or other instruments used for any part of this Project which do not bear the Architect's seal. The Architect's responsibility is limited to the design of the Project. The Architect's design is based on the information provided by the client and is not intended to be a warranty or a guarantee of the performance of the Project. The Architect's design is based on the information provided by the client and is not intended to be a warranty or a guarantee of the performance of the Project.

RELATED DOCUMENTS: This drawing is a single component of an integrated set of Construction Documents. General and Supplementary Conditions of the Contract, General Requirements, Specifications and other drawings are part of the Contract Documents. It is to be read and interpreted in conjunction with the entire set of Construction Documents and shall never be construed as a separate project.

CONTRACT: This drawing is subject to the terms and conditions of the contract. The Architect's design is based on the information provided by the client and is not intended to be a warranty or a guarantee of the performance of the Project.

VERIFY ALL CONDITIONS and dimensions prior to construction. Construction of work shall conform with applicable codes and standards. Any deviation from the design shall be the responsibility of the contractor. The Architect is not responsible for any errors or omissions in the drawings or for any damage or loss resulting from the use of the drawings. The Architect's design is based on the information provided by the client and is not intended to be a warranty or a guarantee of the performance of the Project.

DISCREPANCIES: If there is a discrepancy between the drawings and the specifications, the specifications shall govern. If there is a discrepancy between the drawings and the schedule, the schedule shall govern. If there is a discrepancy between the drawings and the contract documents, the contract documents shall govern.

CONTRACTOR'S OBLIGATION: The contractor shall be responsible for obtaining all necessary permits and for complying with all applicable codes and standards. The contractor shall also be responsible for obtaining all necessary approvals from the relevant authorities. The contractor shall also be responsible for obtaining all necessary approvals from the relevant authorities.

VERIFICATION: The contractor shall be responsible for verifying all dimensions and conditions prior to construction. The contractor shall also be responsible for verifying all dimensions and conditions prior to construction.

project title

project number
19007.019

drawing issuance
OWNER/PERMIT/BID 1.7.20

drawing revisions

Date	Description

professional seal

HELZBERG DIAMONDS
STORE 211, NG-M
MALL OF GEORGIA
3333 BUFORD DR., 207 DC
BUFORD, GEORGIA 30519

GEORGIA REGISTERED PROFESSIONAL SEAL
No. 037207
1.9.2020
Exp. 12/31/2020

drawing title
PLUMBING DETAILS & SCHEDULES

drawing number
P200

rtm
engineering consultants
9225 Inland Creek Pkwy, Suite 1078 | Overland Park, KS 66219
T: 913.552.1450 | WWW.RTMCONSULTANTS.COM
GEORGIA CDA # PE100858