

GRAPHIC SCHEDULE

NOTE: THIS IS A MASTER LIST AND NOT ALL GRAPHIC SETS WILL BE USED.

MARK	NAME/DESCRIPTION	STD. SIZE	PUBLISHER/MANUFACTURER
G-1			
G-2			
G-3			
G-4			
G-5			
G-6			
G-7			

REFERENCE

NOTE: NOT ALL KEYNOTES USED

REFERENCE NUMBER	DESCRIPTION
2.0	EXISTING CONDITIONS
2.01	PROTECTING EXISTING TO REMAIN AS IS
2.20	REMOVE EXISTING + DISPOSE OF LEGALLY
2.21	REMOVE EXISTING - CLIPART, STORE + REINSTALL
2.42	REMOVE EXISTING - TURN OVER TO OWNER
4.0	MASONRY
4.1	MASONRY WALL WITH JOINT REPAIR
4.2	SMOOTH FACE CMU W/ SOLID GROUT FILL @ ALL JOINTS
5.0	METALS
5.1	4" METAL STUDS - 16" O.C. (MAX.) OR AS NOTED
5.2	5/8" x 20 GA METAL STUDS - 16" O.C. (MAX.) UNLESS REFER TO A510 - WALL TYPES
5.3	1/2" x 20 GA METAL STUDS - 16" O.C. (MAX.) UNLESS REFER TO A510 - WALL TYPES
5.4	3/8" x 20 GA METAL STUDS - 16" O.C. (MAX.) UNLESS REFER TO A510 - WALL TYPES
5.5	2" x 4" CHANNEL - 24" O.C. UNLESS NOTED
5.6	2" x 20 GA TRACK W/ 1/2" GUTTER
5.7	5/8" x 20 GA METAL STUDS - 16" O.C. UNLESS REFER TO A510 - WALL TYPES
5.8	1/2" x 20 GA METAL STUDS - 16" O.C. UNLESS REFER TO A510 - WALL TYPES
5.9	3/8" x 20 GA METAL STUDS - 16" O.C. UNLESS REFER TO A510 - WALL TYPES
5.10	4" x 4" SQUARE STUDS - 16" O.C. UNLESS REFER TO A510 - WALL TYPES
5.11	4" x 4" SQUARE STUDS - 16" O.C. UNLESS REFER TO A510 - WALL TYPES
5.12	4" WIRE MESH ANCHOR IN CEILING GRID
5.13	1/2" x 1/2" GALV. METAL ANCHOR @ 4'-0" O.C.
5.14	1/2" x 1/2" GALV. METAL ANCHOR @ 4'-0" O.C.
5.15	1/2" x 1/2" GALV. METAL ANCHOR @ 4'-0" O.C.
5.16	SCHWABER DIVIDER - STAINLESS STEEL
5.17	1/2" x 1/2" GALV. METAL ANCHOR @ 4'-0" O.C.
5.18	1/2" x 1/2" GALV. METAL ANCHOR @ 4'-0" O.C.
5.19	1/2" x 1/2" GALV. METAL ANCHOR @ 4'-0" O.C.
5.20	1/2" x 1/2" GALV. METAL ANCHOR @ 4'-0" O.C.
5.21	1/2" x 1/2" GALV. METAL ANCHOR @ 4'-0" O.C.
5.22	STRUCTURAL STEEL ANGLE - REF. STRUCTURAL
5.23	STRUCTURAL STEEL ANGLE - REF. STRUCTURAL
5.24	CURVED METAL CUSTOM SHOP TO SUPPORT METAL/ACRYLIC PANELS
5.25	5/8" x 18 GA METAL FRAMING 12" O.C. @ SECURITY GATE ENCLOSURE + OVERHEAD TRACK/PANEL
5.26	5/8" x 18 GA METAL FRAMING 12" O.C. @ SECURITY GATE ENCLOSURE + OVERHEAD TRACK/PANEL
5.27	5/8" x 18 GA METAL FRAMING 12" O.C. @ SECURITY GATE ENCLOSURE + OVERHEAD TRACK/PANEL
5.28	5/8" x 18 GA METAL FRAMING 12" O.C. @ SECURITY GATE ENCLOSURE + OVERHEAD TRACK/PANEL
5.29	5/8" x 18 GA METAL FRAMING 12" O.C. @ SECURITY GATE ENCLOSURE + OVERHEAD TRACK/PANEL
5.30	1/2" x 1/2" GALV. METAL ANCHOR @ 4'-0" O.C.
5.31	1/2" x 1/2" GALV. METAL ANCHOR @ 4'-0" O.C.
5.32	1/2" x 1/2" GALV. METAL ANCHOR @ 4'-0" O.C.
5.33	1/2" x 1/2" GALV. METAL ANCHOR @ 4'-0" O.C.
5.34	1/2" x 1/2" GALV. METAL ANCHOR @ 4'-0" O.C.
5.35	1/2" x 1/2" GALV. METAL ANCHOR @ 4'-0" O.C.
5.36	1/2" x 1/2" GALV. METAL ANCHOR @ 4'-0" O.C.
5.37	1/2" x 1/2" GALV. METAL ANCHOR @ 4'-0" O.C.
5.38	1/2" x 1/2" GALV. METAL ANCHOR @ 4'-0" O.C.
5.39	1/2" x 1/2" GALV. METAL ANCHOR @ 4'-0" O.C.
5.40	1/2" x 1/2" GALV. METAL ANCHOR @ 4'-0" O.C.
5.41	1/2" x 1/2" GALV. METAL ANCHOR @ 4'-0" O.C.
5.42	1/2" x 1/2" GALV. METAL ANCHOR @ 4'-0" O.C.
5.43	1/2" x 1/2" GALV. METAL ANCHOR @ 4'-0" O.C.
5.44	1/2" x 1/2" GALV. METAL ANCHOR @ 4'-0" O.C.
5.45	1/2" x 1/2" GALV. METAL ANCHOR @ 4'-0" O.C.
5.46	1/2" x 1/2" GALV. METAL ANCHOR @ 4'-0" O.C.
5.47	1/2" x 1/2" GALV. METAL ANCHOR @ 4'-0" O.C.
5.48	1/2" x 1/2" GALV. METAL ANCHOR @ 4'-0" O.C.
5.49	1/2" x 1/2" GALV. METAL ANCHOR @ 4'-0" O.C.
5.50	1/2" x 1/2" GALV. METAL ANCHOR @ 4'-0" O.C.
5.51	1/2" x 1/2" GALV. METAL ANCHOR @ 4'-0" O.C.
5.52	1/2" x 1/2" GALV. METAL ANCHOR @ 4'-0" O.C.
5.53	1/2" x 1/2" GALV. METAL ANCHOR @ 4'-0" O.C.
5.54	1/2" x 1/2" GALV. METAL ANCHOR @ 4'-0" O.C.
5.55	1/2" x 1/2" GALV. METAL ANCHOR @ 4'-0" O.C.
5.56	1/2" x 1/2" GALV. METAL ANCHOR @ 4'-0" O.C.
5.57	1/2" x 1/2" GALV. METAL ANCHOR @ 4'-0" O.C.
5.58	1/2" x 1/2" GALV. METAL ANCHOR @ 4'-0" O.C.
5.59	1/2" x 1/2" GALV. METAL ANCHOR @ 4'-0" O.C.
5.60	1/2" x 1/2" GALV. METAL ANCHOR @ 4'-0" O.C.
5.61	1/2" x 1/2" GALV. METAL ANCHOR @ 4'-0" O.C.
5.62	1/2" x 1/2" GALV. METAL ANCHOR @ 4'-0" O.C.
5.63	1/2" x 1/2" GALV. METAL ANCHOR @ 4'-0" O.C.
5.64	1/2" x 1/2" GALV. METAL ANCHOR @ 4'-0" O.C.
5.65	1/2" x 1/2" GALV. METAL ANCHOR @ 4'-0" O.C.
5.66	1/2" x 1/2" GALV. METAL ANCHOR @ 4'-0" O.C.
5.67	1/2" x 1/2" GALV. METAL ANCHOR @ 4'-0" O.C.
5.68	1/2" x 1/2" GALV. METAL ANCHOR @ 4'-0" O.C.
5.69	1/2" x 1/2" GALV. METAL ANCHOR @ 4'-0" O.C.
5.70	1/2" x 1/2" GALV. METAL ANCHOR @ 4'-0" O.C.
5.71	1/2" x 1/2" GALV. METAL ANCHOR @ 4'-0" O.C.
5.72	1/2" x 1/2" GALV. METAL ANCHOR @ 4'-0" O.C.
5.73	1/2" x 1/2" GALV. METAL ANCHOR @ 4'-0" O.C.
5.74	1/2" x 1/2" GALV. METAL ANCHOR @ 4'-0" O.C.
5.75	1/2" x 1/2" GALV. METAL ANCHOR @ 4'-0" O.C.
5.76	1/2" x 1/2" GALV. METAL ANCHOR @ 4'-0" O.C.
5.77	1/2" x 1/2" GALV. METAL ANCHOR @ 4'-0" O.C.
5.78	1/2" x 1/2" GALV. METAL ANCHOR @ 4'-0" O.C.
5.79	1/2" x 1/2" GALV. METAL ANCHOR @ 4'-0" O.C.
5.80	1/2" x 1/2" GALV. METAL ANCHOR @ 4'-0" O.C.
5.81	1/2" x 1/2" GALV. METAL ANCHOR @ 4'-0" O.C.
5.82	1/2" x 1/2" GALV. METAL ANCHOR @ 4'-0" O.C.
5.83	1/2" x 1/2" GALV. METAL ANCHOR @ 4'-0" O.C.
5.84	1/2" x 1/2" GALV. METAL ANCHOR @ 4'-0" O.C.
5.85	1/2" x 1/2" GALV. METAL ANCHOR @ 4'-0" O.C.
5.86	1/2" x 1/2" GALV. METAL ANCHOR @ 4'-0" O.C.
5.87	1/2" x 1/2" GALV. METAL ANCHOR @ 4'-0" O.C.
5.88	1/2" x 1/2" GALV. METAL ANCHOR @ 4'-0" O.C.
5.89	1/2" x 1/2" GALV. METAL ANCHOR @ 4'-0" O.C.
5.90	1/2" x 1/2" GALV. METAL ANCHOR @ 4'-0" O.C.
5.91	1/2" x 1/2" GALV. METAL ANCHOR @ 4'-0" O.C.
5.92	1/2" x 1/2" GALV. METAL ANCHOR @ 4'-0" O.C.
5.93	1/2" x 1/2" GALV. METAL ANCHOR @ 4'-0" O.C.
5.94	1/2" x 1/2" GALV. METAL ANCHOR @ 4'-0" O.C.
5.95	1/2" x 1/2" GALV. METAL ANCHOR @ 4'-0" O.C.
5.96	1/2" x 1/2" GALV. METAL ANCHOR @ 4'-0" O.C.
5.97	1/2" x 1/2" GALV. METAL ANCHOR @ 4'-0" O.C.
5.98	1/2" x 1/2" GALV. METAL ANCHOR @ 4'-0" O.C.
5.99	1/2" x 1/2" GALV. METAL ANCHOR @ 4'-0" O.C.
5.100	1/2" x 1/2" GALV. METAL ANCHOR @ 4'-0" O.C.

FRAME SCHEDULE

MARK	NAME	SIZE	PUBLISHER
FR-1	SNAP FRAME	27X33	RPG
FR-2	SNAP FRAME	16X60	RPG
FR-3	HELZBERG BUTTON	8" DIA	
FR-4	HANGING GRAPHICS FRAME	42X72	TESITE
FR-5	HANGING GRAPHICS FRAME	36X96	TESITE
FR-X	BY LOCATION	BY LOCATION	BY LOCATION

NOT USED 16
SCALE:

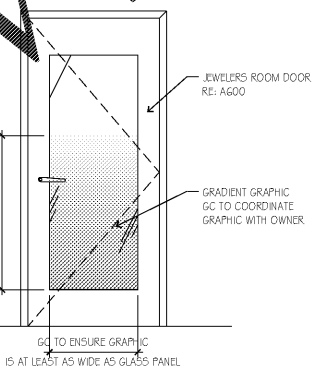
NOT USED 12
SCALE:

NOT USED 15
SCALE:

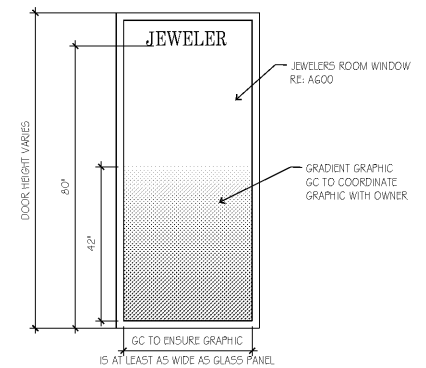
NOT USED 11
SCALE:

NOT USED 14
SCALE:

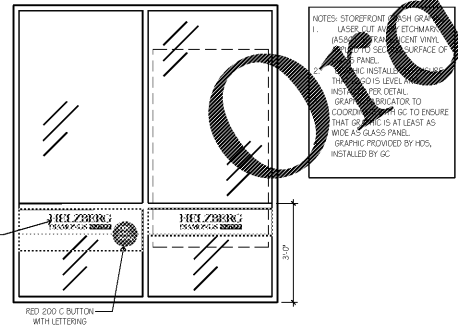
NOT USED 10
SCALE:



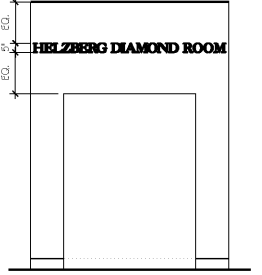
JEWELERS DOOR GRAPHIC 6
SCALE: 1/2" = 1'-0"



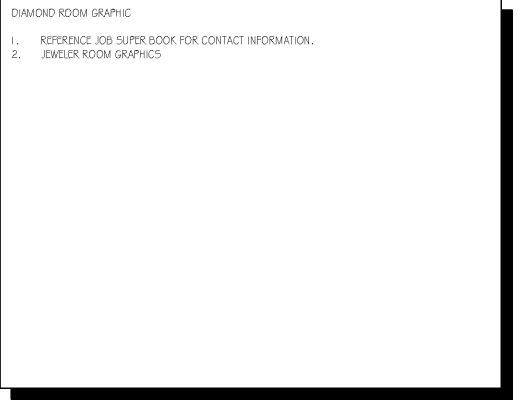
JEWELERS WINDOW GRAPHIC 2
SCALE: 1/2" = 1'-0"



STANDARD OUTLET WINDOW GRAPHIC 13
SCALE: 3/8" = 1'-0"



DIAMOND ROOM SIGN 5
SCALE: 1/4" = 1'-0"



GENERAL NOTES 1
SCALE:

THIS DRAWING has been prepared by the Architect, or prepared under the direct supervision and professional seal of service and is intended for use only on this project. All drawings, specifications, notes and details, including the overall layout, form, arrangement, and composition of spaces and elements are intended to be the original, unaltered work of the Architect. Any reproduction, use, or disclosure of the information contained herein without the written consent of the Architect is strictly prohibited.

© 2019 H.C. KLOVER ARCHITECT

THE ARCHITECT DISCLAIMS responsibility for the existing building structure, site conditions, existing construction elements, or any requirements, drawings or other instructions, and for any other drawings, specifications, notes and details, including the overall layout, form, arrangement, and composition of spaces and elements are intended to be the original, unaltered work of the Architect. Any reproduction, use, or disclosure of the information contained herein without the written consent of the Architect is strictly prohibited.

VERIFY ACTUAL CONDITIONS and dimensions prior to construction. Commencement of work constitutes acceptance of all existing conditions. Application of a material or equipment item is limited by then available acceptance of that item, and assumption of responsibility for satisfactory installation.

VERIFY ACTUAL CONDITIONS and dimensions prior to construction. Commencement of work constitutes acceptance of all existing conditions. Application of a material or equipment item is limited by then available acceptance of that item, and assumption of responsibility for satisfactory installation.

VERIFY ACTUAL CONDITIONS and dimensions prior to construction. Commencement of work constitutes acceptance of all existing conditions. Application of a material or equipment item is limited by then available acceptance of that item, and assumption of responsibility for satisfactory installation.

HELZBERG DIAMONDS STORE 211, NG-M MALL OF GEORGIA 3333 BUFORD DR. 2070C BUFORD, GEORGIA 30519

project title

project number 19007.019

drawing issuance

OWNER/PERMIT/BD 1.7.20

drawing revisions

professional seal

FOR REFERENCE ONLY

drawing title GRAPHIC PLAN AND DETAILS

drawing number A800

hckloverarchitect

8813 PENROSE LANE, SUITE 400 • LEXENA, KS 66219
ph: 913.649.8181 • fx: 913.649.1276 • www.hcklover.net