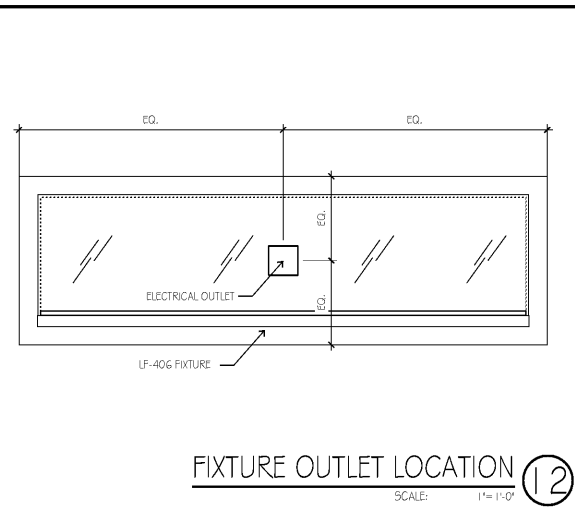
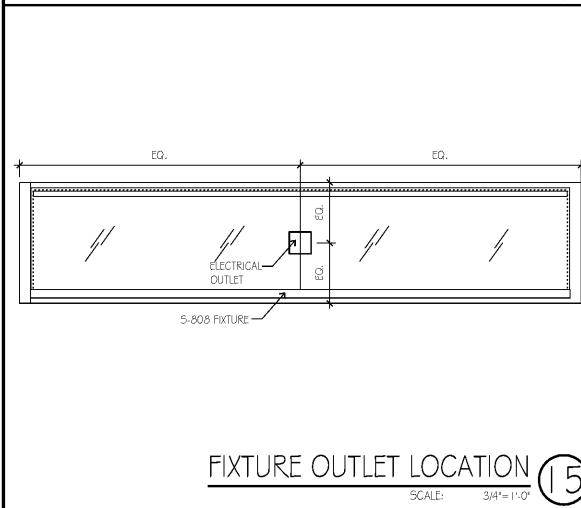


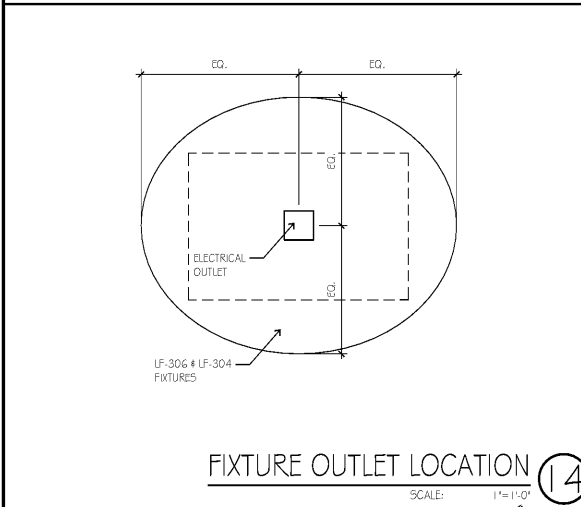
FIXTURE OUTLET LOCATION ⑬  
SCALE: 1/4"=1'-0"



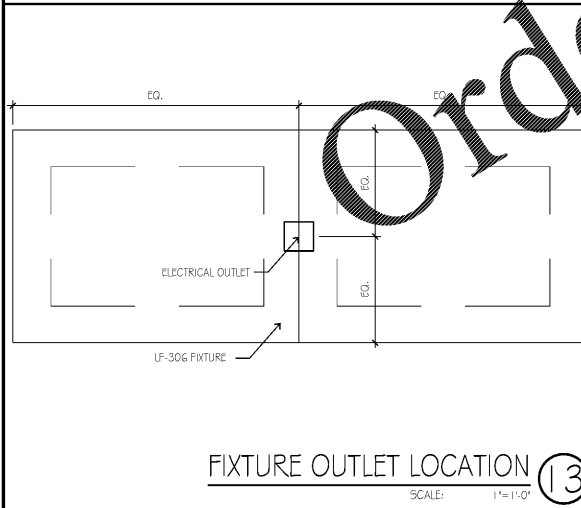
FIXTURE OUTLET LOCATION ⑫  
SCALE: 1/4"=1'-0"



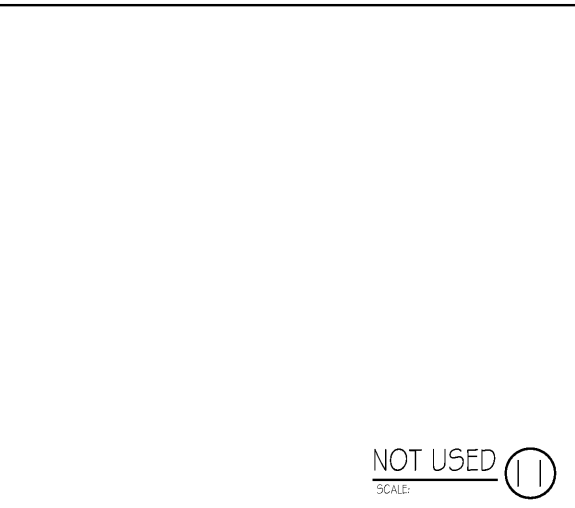
FIXTURE OUTLET LOCATION ⑮  
SCALE: 3/4"=1'-0"



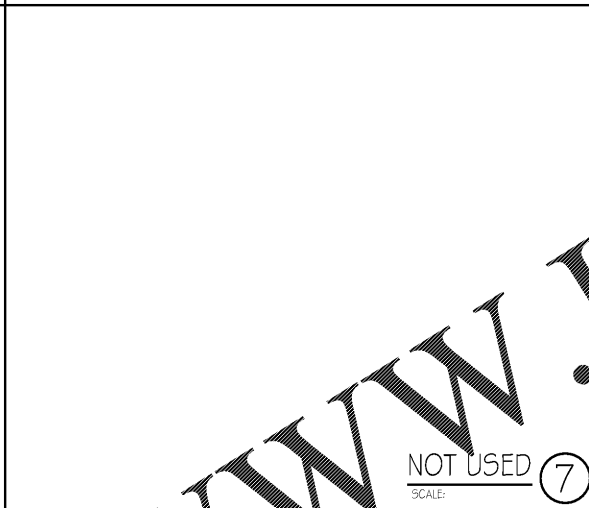
FIXTURE OUTLET LOCATION ⑭  
SCALE: 1/4"=1'-0"



FIXTURE OUTLET LOCATION ⑬  
SCALE: 1/4"=1'-0"



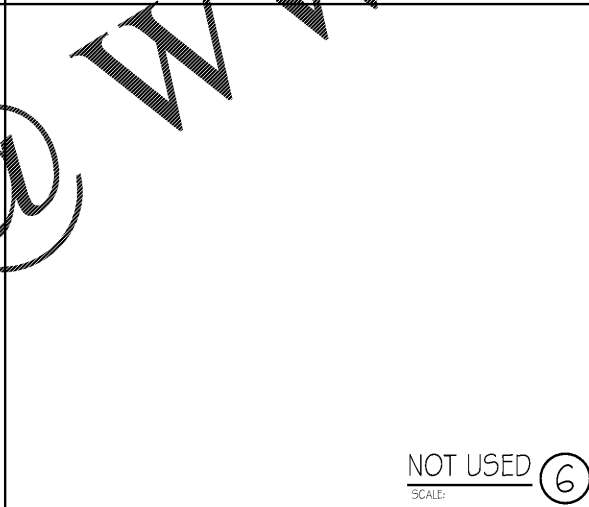
NOT USED ⑪  
SCALE:



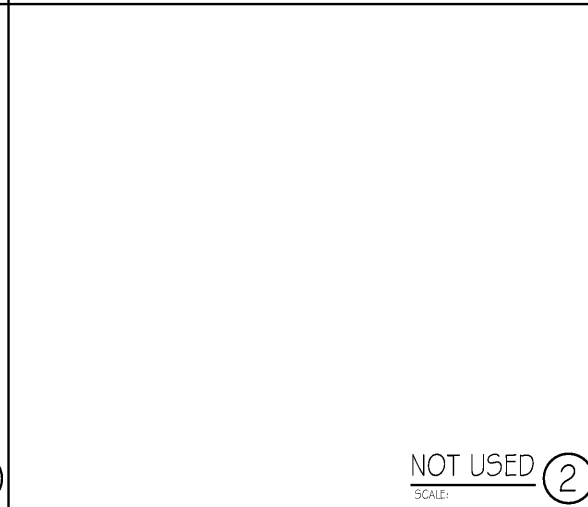
NOT USED ⑦  
SCALE:



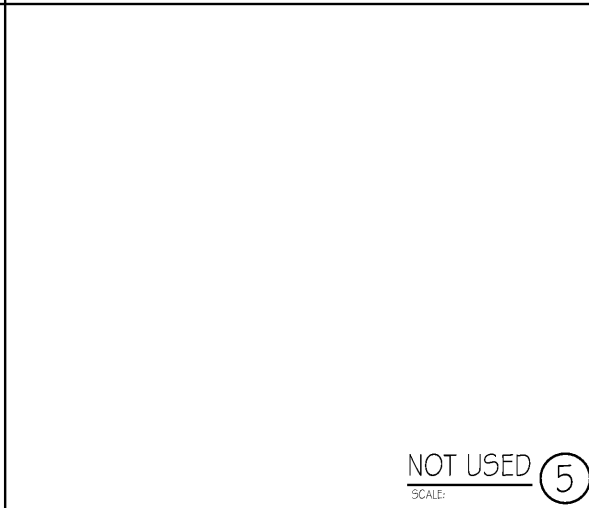
NOT USED ③  
SCALE:



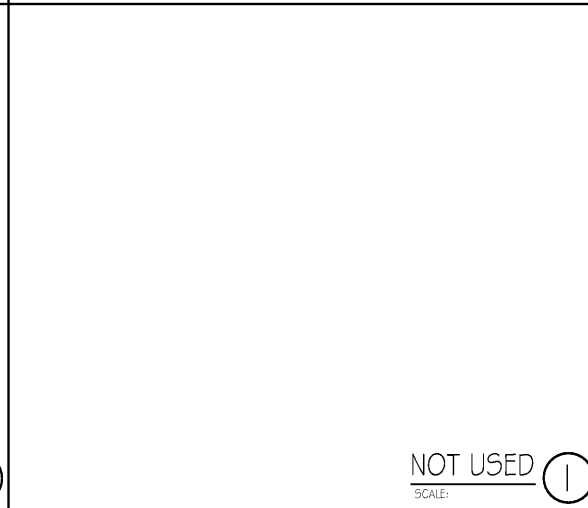
NOT USED ⑥  
SCALE:



NOT USED ②  
SCALE:



NOT USED ⑨  
SCALE:



NOT USED ⑤  
SCALE:

REFERENCE NUMBER	DESCRIPTION
Z.01	EXISTING CONDITIONS
Z.01	PROTECTIVE EXISTING TO REMAIN AS IS
Z.20	REMOVE EXISTING & DISPOSE OF LEGALLY
Z.21	REMOVE EXISTING - CLEAN, STORE & REINSTALL
Z.22	REMOVE EXISTING - TURN OVER TO OWNER
4.0	MASONRY
4.1	MASONRY WALL W/HOIZ. JOINT REINF.
4.2	SMOOTH-FACE CMU W/ SOLID GROUT FILL @ ALL CELLS
5.0	METALS
5.1	1" METAL STUDS, 16" O.C. (MAX.) OR AS NOTED
5.2	3/8" x 20 GA METAL STUDS, 16" O.C. (MAX.) UNO. REFER TO AG 10 - WALL TYPES
5.3	1/2" x 20 GA METAL STUDS, 16" O.C. (MAX.) UNO. REFER TO AG 10 - WALL TYPES
5.4	3/8" x 20 GA METAL STUDS, 16" O.C. (MAX.) UNO. REFER TO AG 10 - WALL TYPES
5.5	1/8" HAT CHANNEL, 24" O.C. (MAX.) UNO.
5.6	3" x 20 GA TRACK W/ 1/4" FLANGE, REFER TO AG 10 - WALL TYPES
5.7	3/8" x 20 GA TRACK W/ 1/4" FLANGE, REFER TO AG 10 - WALL TYPES
5.8	1/2" x 20 GA TRACK W/ 1/4" FLANGE, REFER TO AG 10 - WALL TYPES
5.9	3/8" x 20 GA TRACK W/ 1/4" FLANGE, REFER TO AG 10 - WALL TYPES
5.10	1/2" x 20 GA TRACK W/ 1/4" FLANGE, REFER TO AG 10 - WALL TYPES
5.11	1/2" x 20 GA TRACK W/ 1/4" FLANGE, REFER TO AG 10 - WALL TYPES
5.12	1/2" x 20 GA TRACK W/ 1/4" FLANGE, REFER TO AG 10 - WALL TYPES
5.13	1/2" x 20 GA TRACK W/ 1/4" FLANGE, REFER TO AG 10 - WALL TYPES
5.14	1/2" x 20 GA TRACK W/ 1/4" FLANGE, REFER TO AG 10 - WALL TYPES
5.15	1/2" x 20 GA TRACK W/ 1/4" FLANGE, REFER TO AG 10 - WALL TYPES
5.16	1/2" x 20 GA TRACK W/ 1/4" FLANGE, REFER TO AG 10 - WALL TYPES
5.17	1/2" x 20 GA TRACK W/ 1/4" FLANGE, REFER TO AG 10 - WALL TYPES
5.18	1/2" x 20 GA TRACK W/ 1/4" FLANGE, REFER TO AG 10 - WALL TYPES
5.19	1/2" x 20 GA TRACK W/ 1/4" FLANGE, REFER TO AG 10 - WALL TYPES
5.20	1/2" x 20 GA TRACK W/ 1/4" FLANGE, REFER TO AG 10 - WALL TYPES
5.21	1/2" x 20 GA TRACK W/ 1/4" FLANGE, REFER TO AG 10 - WALL TYPES
5.22	1/2" x 20 GA TRACK W/ 1/4" FLANGE, REFER TO AG 10 - WALL TYPES
5.23	1/2" x 20 GA TRACK W/ 1/4" FLANGE, REFER TO AG 10 - WALL TYPES
5.24	1/2" x 20 GA TRACK W/ 1/4" FLANGE, REFER TO AG 10 - WALL TYPES
5.25	1/2" x 20 GA TRACK W/ 1/4" FLANGE, REFER TO AG 10 - WALL TYPES
5.26	1/2" x 20 GA TRACK W/ 1/4" FLANGE, REFER TO AG 10 - WALL TYPES
5.27	1/2" x 20 GA TRACK W/ 1/4" FLANGE, REFER TO AG 10 - WALL TYPES
5.28	1/2" x 20 GA TRACK W/ 1/4" FLANGE, REFER TO AG 10 - WALL TYPES
5.29	1/2" x 20 GA TRACK W/ 1/4" FLANGE, REFER TO AG 10 - WALL TYPES
5.30	1/2" x 20 GA TRACK W/ 1/4" FLANGE, REFER TO AG 10 - WALL TYPES
5.31	1/2" x 20 GA TRACK W/ 1/4" FLANGE, REFER TO AG 10 - WALL TYPES
5.32	1/2" x 20 GA TRACK W/ 1/4" FLANGE, REFER TO AG 10 - WALL TYPES
5.33	1/2" x 20 GA TRACK W/ 1/4" FLANGE, REFER TO AG 10 - WALL TYPES
5.34	1/2" x 20 GA TRACK W/ 1/4" FLANGE, REFER TO AG 10 - WALL TYPES
5.35	1/2" x 20 GA TRACK W/ 1/4" FLANGE, REFER TO AG 10 - WALL TYPES
5.36	1/2" x 20 GA TRACK W/ 1/4" FLANGE, REFER TO AG 10 - WALL TYPES
5.37	1/2" x 20 GA TRACK W/ 1/4" FLANGE, REFER TO AG 10 - WALL TYPES
5.38	1/2" x 20 GA TRACK W/ 1/4" FLANGE, REFER TO AG 10 - WALL TYPES
5.39	1/2" x 20 GA TRACK W/ 1/4" FLANGE, REFER TO AG 10 - WALL TYPES
5.40	1/2" x 20 GA TRACK W/ 1/4" FLANGE, REFER TO AG 10 - WALL TYPES
5.41	1/2" x 20 GA TRACK W/ 1/4" FLANGE, REFER TO AG 10 - WALL TYPES
5.42	1/2" x 20 GA TRACK W/ 1/4" FLANGE, REFER TO AG 10 - WALL TYPES
5.43	1/2" x 20 GA TRACK W/ 1/4" FLANGE, REFER TO AG 10 - WALL TYPES
5.44	1/2" x 20 GA TRACK W/ 1/4" FLANGE, REFER TO AG 10 - WALL TYPES
5.45	1/2" x 20 GA TRACK W/ 1/4" FLANGE, REFER TO AG 10 - WALL TYPES
5.46	1/2" x 20 GA TRACK W/ 1/4" FLANGE, REFER TO AG 10 - WALL TYPES
5.47	1/2" x 20 GA TRACK W/ 1/4" FLANGE, REFER TO AG 10 - WALL TYPES
5.48	1/2" x 20 GA TRACK W/ 1/4" FLANGE, REFER TO AG 10 - WALL TYPES
5.49	1/2" x 20 GA TRACK W/ 1/4" FLANGE, REFER TO AG 10 - WALL TYPES
5.50	1/2" x 20 GA TRACK W/ 1/4" FLANGE, REFER TO AG 10 - WALL TYPES
5.51	1/2" x 20 GA TRACK W/ 1/4" FLANGE, REFER TO AG 10 - WALL TYPES
5.52	1/2" x 20 GA TRACK W/ 1/4" FLANGE, REFER TO AG 10 - WALL TYPES
5.53	1/2" x 20 GA TRACK W/ 1/4" FLANGE, REFER TO AG 10 - WALL TYPES
6.0	DOORS & WINDOWS
6.1	1/2" TEMPERED CLEAR GLAZING
6.2	3/8" TEMPERED CLEAR GLAZING
6.3	1/2" TEMPERED CLEAR GLAZING
6.4	1/2" TEMPERED CLEAR GLAZING
6.5	1/2" TEMPERED CLEAR GLAZING
6.6	1/2" TEMPERED CLEAR GLAZING
6.7	1/2" TEMPERED CLEAR GLAZING
6.8	1/2" TEMPERED CLEAR GLAZING
6.9	1/2" TEMPERED CLEAR GLAZING
6.10	1/2" TEMPERED CLEAR GLAZING
6.11	1/2" TEMPERED CLEAR GLAZING
6.12	1/2" TEMPERED CLEAR GLAZING
6.13	1/2" TEMPERED CLEAR GLAZING
6.14	1/2" TEMPERED CLEAR GLAZING
6.15	1/2" TEMPERED CLEAR GLAZING
6.16	1/2" TEMPERED CLEAR GLAZING
6.17	1/2" TEMPERED CLEAR GLAZING
6.18	1/2" TEMPERED CLEAR GLAZING
6.19	1/2" TEMPERED CLEAR GLAZING
6.20	1/2" TEMPERED CLEAR GLAZING
6.21	1/2" TEMPERED CLEAR GLAZING
6.22	1/2" TEMPERED CLEAR GLAZING
6.23	1/2" TEMPERED CLEAR GLAZING
6.24	1/2" TEMPERED CLEAR GLAZING
6.25	1/2" TEMPERED CLEAR GLAZING
6.26	1/2" TEMPERED CLEAR GLAZING
6.27	1/2" TEMPERED CLEAR GLAZING
6.28	1/2" TEMPERED CLEAR GLAZING
6.29	1/2" TEMPERED CLEAR GLAZING
6.30	1/2" TEMPERED CLEAR GLAZING
6.31	1/2" TEMPERED CLEAR GLAZING
6.32	1/2" TEMPERED CLEAR GLAZING
6.33	1/2" TEMPERED CLEAR GLAZING
6.34	1/2" TEMPERED CLEAR GLAZING
6.35	1/2" TEMPERED CLEAR GLAZING
6.36	1/2" TEMPERED CLEAR GLAZING
6.37	1/2" TEMPERED CLEAR GLAZING
6.38	1/2" TEMPERED CLEAR GLAZING
6.39	1/2" TEMPERED CLEAR GLAZING
6.40	1/2" TEMPERED CLEAR GLAZING
6.41	1/2" TEMPERED CLEAR GLAZING
6.42	1/2" TEMPERED CLEAR GLAZING
6.43	1/2" TEMPERED CLEAR GLAZING
6.44	1/2" TEMPERED CLEAR GLAZING
6.45	1/2" TEMPERED CLEAR GLAZING
6.46	1/2" TEMPERED CLEAR GLAZING
6.47	1/2" TEMPERED CLEAR GLAZING
6.48	1/2" TEMPERED CLEAR GLAZING
6.49	1/2" TEMPERED CLEAR GLAZING
6.50	1/2" TEMPERED CLEAR GLAZING
6.51	1/2" TEMPERED CLEAR GLAZING
6.52	1/2" TEMPERED CLEAR GLAZING
6.53	1/2" TEMPERED CLEAR GLAZING
6.54	1/2" TEMPERED CLEAR GLAZING
6.55	1/2" TEMPERED CLEAR GLAZING
6.56	1/2" TEMPERED CLEAR GLAZING
6.57	1/2" TEMPERED CLEAR GLAZING
6.58	1/2" TEMPERED CLEAR GLAZING
6.59	1/2" TEMPERED CLEAR GLAZING
6.60	1/2" TEMPERED CLEAR GLAZING
6.61	1/2" TEMPERED CLEAR GLAZING
6.62	1/2" TEMPERED CLEAR GLAZING
6.63	1/2" TEMPERED CLEAR GLAZING
6.64	1/2" TEMPERED CLEAR GLAZING
6.65	1/2" TEMPERED CLEAR GLAZING
6.66	1/2" TEMPERED CLEAR GLAZING
6.67	1/2" TEMPERED CLEAR GLAZING
6.68	1/2" TEMPERED CLEAR GLAZING
6.69	1/2" TEMPERED CLEAR GLAZING
6.70	1/2" TEMPERED CLEAR GLAZING
6.71	1/2" TEMPERED CLEAR GLAZING
6.72	1/2" TEMPERED CLEAR GLAZING
6.73	1/2" TEMPERED CLEAR GLAZING
6.74	1/2" TEMPERED CLEAR GLAZING
6.75	1/2" TEMPERED CLEAR GLAZING
6.76	1/2" TEMPERED CLEAR GLAZING
6.77	1/2" TEMPERED CLEAR GLAZING
6.78	1/2" TEMPERED CLEAR GLAZING
6.79	1/2" TEMPERED CLEAR GLAZING
6.80	1/2" TEMPERED CLEAR GLAZING
6.81	1/2" TEMPERED CLEAR GLAZING
6.82	1/2" TEMPERED CLEAR GLAZING
6.83	1/2" TEMPERED CLEAR GLAZING
6.84	1/2" TEMPERED CLEAR GLAZING
6.85	1/2" TEMPERED CLEAR GLAZING
6.86	1/2" TEMPERED CLEAR GLAZING
6.87	1/2" TEMPERED CLEAR GLAZING
6.88	1/2" TEMPERED CLEAR GLAZING
6.89	1/2" TEMPERED CLEAR GLAZING
6.90	1/2" TEMPERED CLEAR GLAZING
6.91	1/2" TEMPERED CLEAR GLAZING
6.92	1/2" TEMPERED CLEAR GLAZING
6.93	1/2" TEMPERED CLEAR GLAZING
6.94	1/2" TEMPERED CLEAR GLAZING
6.95	1/2" TEMPERED CLEAR GLAZING
6.96	1/2" TEMPERED CLEAR GLAZING
6.97	1/2" TEMPERED CLEAR GLAZING
6.98	1/2" TEMPERED CLEAR GLAZING
6.99	1/2" TEMPERED CLEAR GLAZING
6.100	1/2" TEMPERED CLEAR GLAZING

**hckloverarchitect**  
8813 PENROSE LANE, SUITE 400 • LENEXA, KS 66219  
ph: 913 648 8181 • fx: 913 648 1275 • www.hcklover.net

**HELZBERG DIAMONDS STORE 211, NG-M MALL OF GEORGIA**  
3333 BUFORD DR. 2070C  
BUFFORD, GEORGIA 30519

project title  
19007.019  
drawing issuance  
OWNER/PERMIT/BD 1.20  
drawing revisions  
Date Description  
professional seal  
drawing title  
OUTLET DETAILS  
drawing number  
**A504**