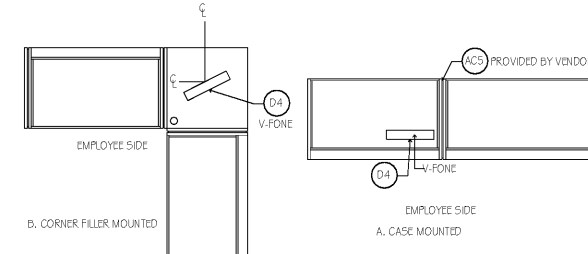


SALES AREA EQUIPMENT & ACCESSORIES LEGEND			MANUFACTURER	DESCRIPTION / NOTES
D1	HDS - HELP DESK	CPU	D14	
D2	HDS - HELP DESK / AFG	CASH DRAWER	D15	HDS - HELP DESK / CISCO
D3	HDS - HELP DESK	MOUSE	D16	COMMWORKS / HOFFMAN
D4	HDS - HELP DESK	CAPTURE PAD STAND	D17	
D5	HDS - HELP DESK	CAPTURE PAD BRACKET	D18	COMMWORKS
D6	HDS - HELP DESK / HONEYWELL	SCANNER	D19	COMMWORKS
D7	HDS - HELP DESK / EPSON	RECEIPT PRINTER	D20	COMMWORKS / ATT
D8	HDS - HELP DESK / HEWLETT PACKARD	LASER PRINTER	D21	COMMWORKS / CISCO
D9	HDS - HELP DESK / HEWLETT PACKARD	TABLET	D22	COMMWORKS / SIEMON
D10	HDS - HELP DESK / CHERRY	KEYBOARD		
D11	HDS - HELP DESK / DIGITAL PERSONA	BIOMETRICS		
D12	HDS - HELP DESK	MONITOR		
D13	HDS - HELP DESK / DLO	TOUCH SCREEN MONITOR		

NOTE: THIS IS A MASTER LIST AND NOT ALL FIXTURES & FURNITURE SETS WILL BE USED.

NOTE:
1. CONFIRM IF EQUIPMENT TO BE REUSED WITH PROJECT MANAGER.

TOTAL DISTANCE FROM HORIZONTAL / VERTICAL FEEDS FROM VERIFONE TO RELATED P.O.S. NOT TO EXCEED 12'. G.C. TO CONTACT OWNER, PROJECT MANAGER IMMEDIATELY IF CONFLICT OCCURS.



TYP. VERIFONE LAYOUTS

REFERENCE NUMBER	DESCRIPTION
2.0	EXISTING CONDITIONS
2.01	PROTECTING EXISTING TO REMAIN AS IS
2.10	REMOVE EXISTING & DISPOSE OF LEGALLY
2.41	REMOVE EXISTING - CLEAN, STORE & REINSTALL
2.42	REMOVE EXISTING - TURN OVER TO OWNER
4.0	MASONRY
4.1	MASONRY WALL W/ ROIZ. JOINT REINF.
4.2	SMOOTH-FACE CMU W/ SOLID GROUT FILL @ ALL CELLS
5.0	METALS
5.1	1/2" GALV. SHEET METAL STUDS 16" O.C. (MAX.) OR AS NOTED
5.2	5/8" x 20 GA METAL STUDS 16" O.C. (MAX.) (MIN. REFER TO A610 - WALL TYPES
5.3	1/2" x 20 GA METAL STUDS 16" O.C. (MAX.) (MIN. REFER TO A610 - WALL TYPES
5.4	1/2" x 20 GA METAL STUDS 16" O.C. (MAX.) (MIN. REFER TO A610 - WALL TYPES
5.5	1/2" x 20 GA METAL STUDS 16" O.C. (MAX.) (MIN. REFER TO A610 - WALL TYPES
5.6	1/2" x 20 GA TRACK W/ 1/4" RIBS @ 12" ON CENTER; REFER TO A610 - WALL TYPES
5.7	1/2" x 20 GA TRACK W/ 1/4" RIBS @ 12" ON CENTER; REFER TO A610 - WALL TYPES
5.8	1/2" x 20 GA TRACK W/ 1/4" RIBS @ 12" ON CENTER; REFER TO A610 - WALL TYPES
5.9	1/2" x 20 GA TRACK W/ 1/4" RIBS @ 12" ON CENTER; REFER TO A610 - WALL TYPES
5.10	1/2" x 20 GA TRACK W/ 1/4" RIBS @ 12" ON CENTER; REFER TO A610 - WALL TYPES
5.11	1/2" x 20 GA TRACK W/ 1/4" RIBS @ 12" ON CENTER; REFER TO A610 - WALL TYPES
5.12	1/2" x 20 GA TRACK W/ 1/4" RIBS @ 12" ON CENTER; REFER TO A610 - WALL TYPES
5.13	1/2" x 20 GA TRACK W/ 1/4" RIBS @ 12" ON CENTER; REFER TO A610 - WALL TYPES
5.14	1/2" x 20 GA TRACK W/ 1/4" RIBS @ 12" ON CENTER; REFER TO A610 - WALL TYPES
5.15	1/2" x 20 GA TRACK W/ 1/4" RIBS @ 12" ON CENTER; REFER TO A610 - WALL TYPES
5.16	1/2" x 20 GA TRACK W/ 1/4" RIBS @ 12" ON CENTER; REFER TO A610 - WALL TYPES
5.17	1/2" x 20 GA TRACK W/ 1/4" RIBS @ 12" ON CENTER; REFER TO A610 - WALL TYPES
5.18	1/2" x 20 GA TRACK W/ 1/4" RIBS @ 12" ON CENTER; REFER TO A610 - WALL TYPES
5.19	1/2" x 20 GA TRACK W/ 1/4" RIBS @ 12" ON CENTER; REFER TO A610 - WALL TYPES
5.20	1/2" x 20 GA TRACK W/ 1/4" RIBS @ 12" ON CENTER; REFER TO A610 - WALL TYPES
5.21	1/2" x 20 GA TRACK W/ 1/4" RIBS @ 12" ON CENTER; REFER TO A610 - WALL TYPES
5.22	1/2" x 20 GA TRACK W/ 1/4" RIBS @ 12" ON CENTER; REFER TO A610 - WALL TYPES
5.23	1/2" x 20 GA TRACK W/ 1/4" RIBS @ 12" ON CENTER; REFER TO A610 - WALL TYPES
5.24	1/2" x 20 GA TRACK W/ 1/4" RIBS @ 12" ON CENTER; REFER TO A610 - WALL TYPES
5.25	1/2" x 20 GA TRACK W/ 1/4" RIBS @ 12" ON CENTER; REFER TO A610 - WALL TYPES
5.26	1/2" x 20 GA TRACK W/ 1/4" RIBS @ 12" ON CENTER; REFER TO A610 - WALL TYPES
5.27	1/2" x 20 GA TRACK W/ 1/4" RIBS @ 12" ON CENTER; REFER TO A610 - WALL TYPES
5.28	1/2" x 20 GA TRACK W/ 1/4" RIBS @ 12" ON CENTER; REFER TO A610 - WALL TYPES
5.29	1/2" x 20 GA TRACK W/ 1/4" RIBS @ 12" ON CENTER; REFER TO A610 - WALL TYPES
5.30	1/2" x 20 GA TRACK W/ 1/4" RIBS @ 12" ON CENTER; REFER TO A610 - WALL TYPES
5.31	1/2" x 20 GA TRACK W/ 1/4" RIBS @ 12" ON CENTER; REFER TO A610 - WALL TYPES
5.32	1/2" x 20 GA TRACK W/ 1/4" RIBS @ 12" ON CENTER; REFER TO A610 - WALL TYPES
5.33	1/2" x 20 GA TRACK W/ 1/4" RIBS @ 12" ON CENTER; REFER TO A610 - WALL TYPES
5.34	1/2" x 20 GA TRACK W/ 1/4" RIBS @ 12" ON CENTER; REFER TO A610 - WALL TYPES
5.35	1/2" x 20 GA TRACK W/ 1/4" RIBS @ 12" ON CENTER; REFER TO A610 - WALL TYPES
5.36	1/2" x 20 GA TRACK W/ 1/4" RIBS @ 12" ON CENTER; REFER TO A610 - WALL TYPES
5.37	1/2" x 20 GA TRACK W/ 1/4" RIBS @ 12" ON CENTER; REFER TO A610 - WALL TYPES
5.38	1/2" x 20 GA TRACK W/ 1/4" RIBS @ 12" ON CENTER; REFER TO A610 - WALL TYPES
5.39	1/2" x 20 GA TRACK W/ 1/4" RIBS @ 12" ON CENTER; REFER TO A610 - WALL TYPES
5.40	1/2" x 20 GA TRACK W/ 1/4" RIBS @ 12" ON CENTER; REFER TO A610 - WALL TYPES
5.41	1/2" x 20 GA TRACK W/ 1/4" RIBS @ 12" ON CENTER; REFER TO A610 - WALL TYPES
5.42	1/2" x 20 GA TRACK W/ 1/4" RIBS @ 12" ON CENTER; REFER TO A610 - WALL TYPES
5.43	1/2" x 20 GA TRACK W/ 1/4" RIBS @ 12" ON CENTER; REFER TO A610 - WALL TYPES
5.44	1/2" x 20 GA TRACK W/ 1/4" RIBS @ 12" ON CENTER; REFER TO A610 - WALL TYPES
5.45	1/2" x 20 GA TRACK W/ 1/4" RIBS @ 12" ON CENTER; REFER TO A610 - WALL TYPES
5.46	1/2" x 20 GA TRACK W/ 1/4" RIBS @ 12" ON CENTER; REFER TO A610 - WALL TYPES
5.47	1/2" x 20 GA TRACK W/ 1/4" RIBS @ 12" ON CENTER; REFER TO A610 - WALL TYPES
5.48	1/2" x 20 GA TRACK W/ 1/4" RIBS @ 12" ON CENTER; REFER TO A610 - WALL TYPES
5.49	1/2" x 20 GA TRACK W/ 1/4" RIBS @ 12" ON CENTER; REFER TO A610 - WALL TYPES
5.50	1/2" x 20 GA TRACK W/ 1/4" RIBS @ 12" ON CENTER; REFER TO A610 - WALL TYPES
5.51	1/2" x 20 GA TRACK W/ 1/4" RIBS @ 12" ON CENTER; REFER TO A610 - WALL TYPES
5.52	1/2" x 20 GA TRACK W/ 1/4" RIBS @ 12" ON CENTER; REFER TO A610 - WALL TYPES
5.53	1/2" x 20 GA TRACK W/ 1/4" RIBS @ 12" ON CENTER; REFER TO A610 - WALL TYPES

NOTE: NOT ALL FEYNOTES USED

THIS DRAWING has been prepared by the Architect, or prepared under the direct supervision and immediate supervision of the Architect, and is intended for use only on this project. All drawings, specifications, sheets and designs, including the general notes, are subject to change without notice and the Architect's services are limited to the design of the project. No other services are intended to be provided by the Architect. The Architect's responsibility is limited to the design of the project. The Architect's responsibility is limited to the design of the project. The Architect's responsibility is limited to the design of the project.

HELZBERG DIAMONDS STORE 211, NG-M MALL OF GEORGIA 3333 BUFORD DR. 2070C BUFORD, GEORGIA 30519

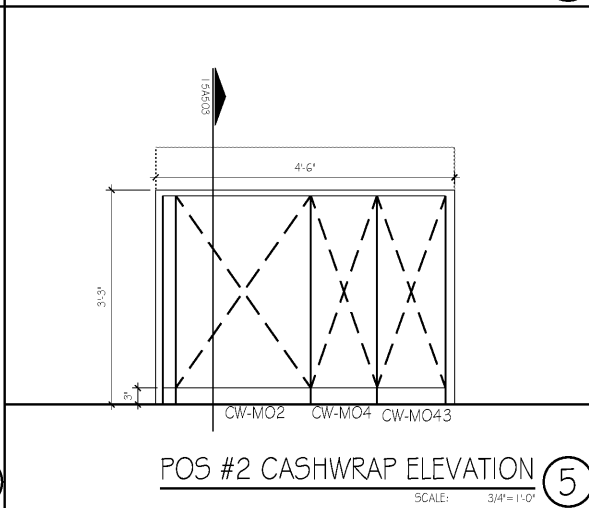
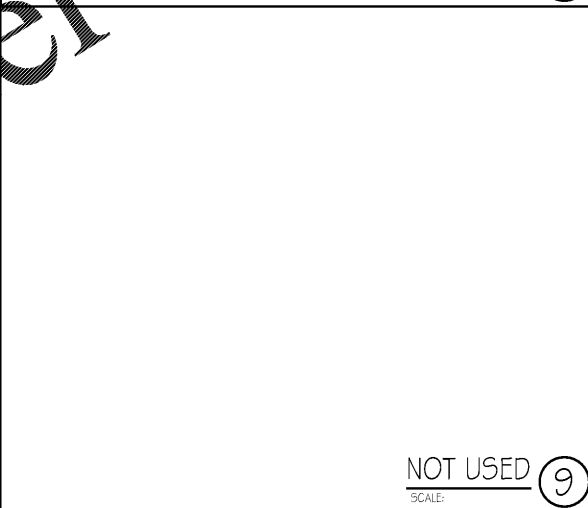
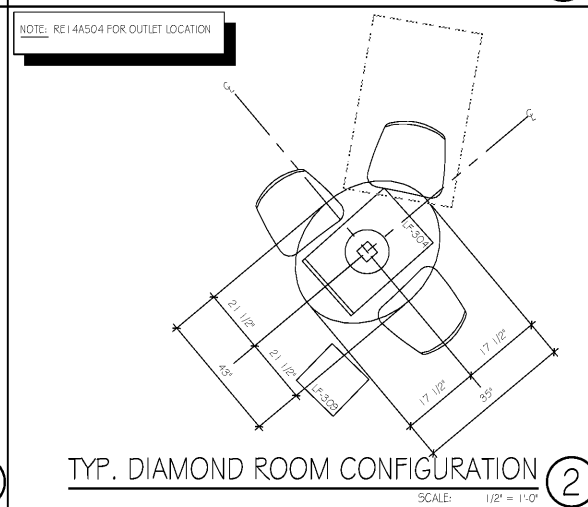
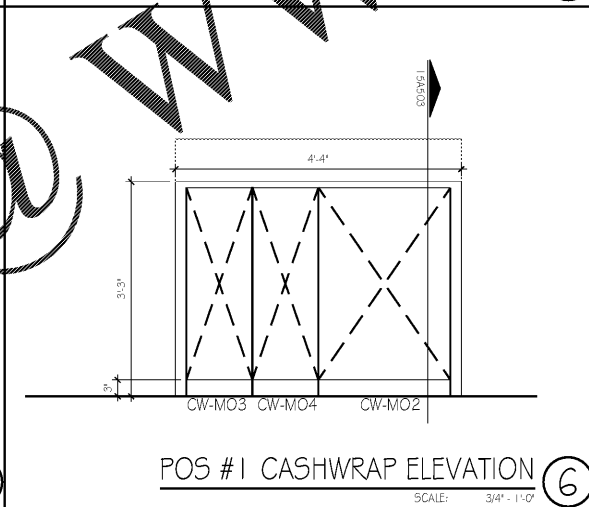
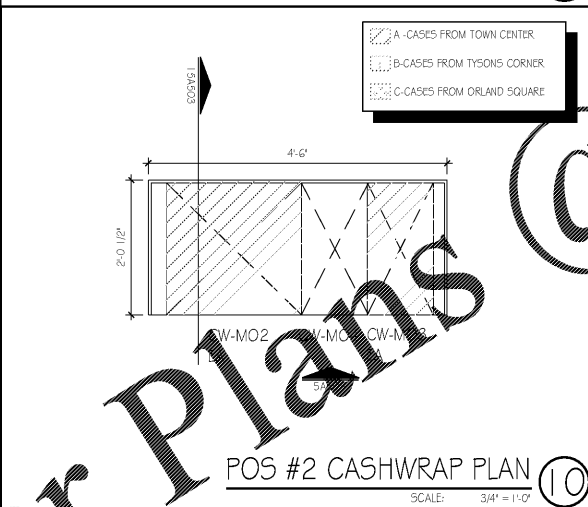
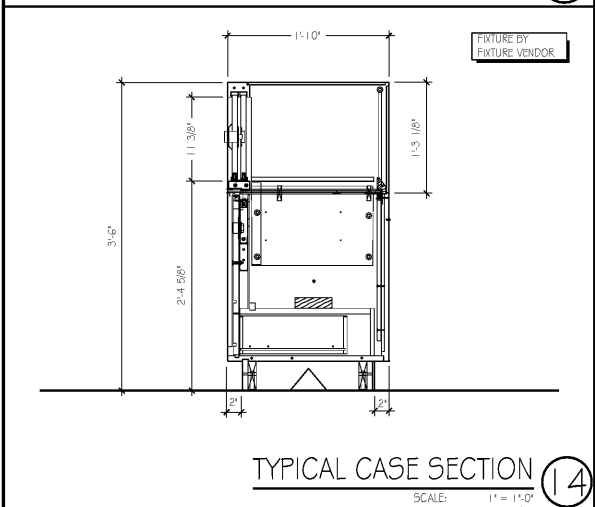
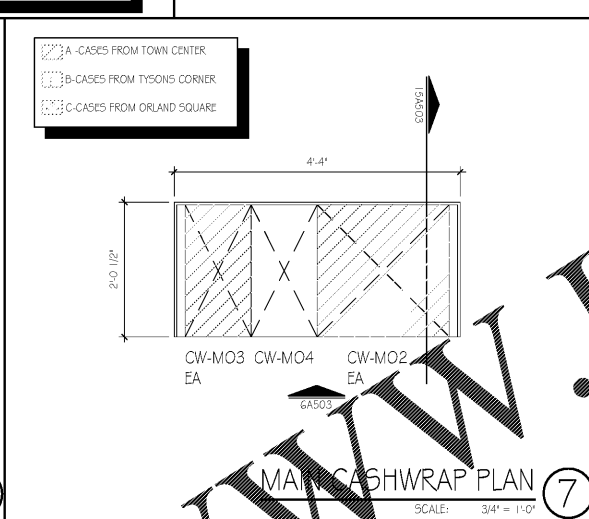
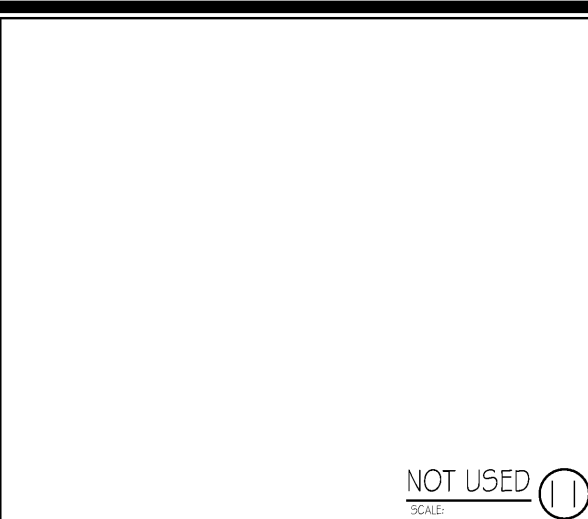
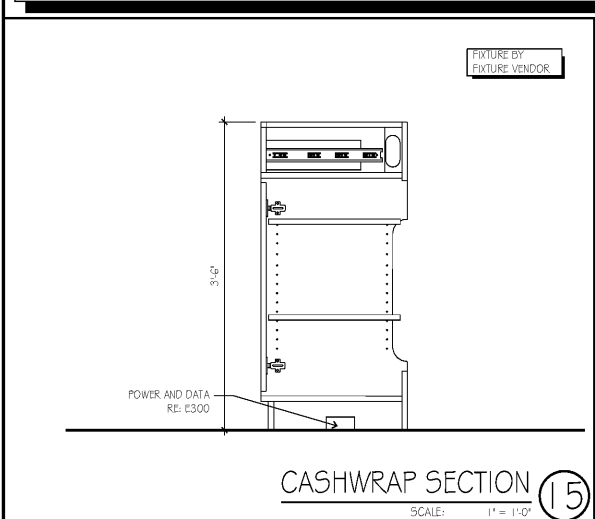
project title

project number 19007.019

drawing issuance OWNER/PERMIT/BD 1.7.20

drawing revisions

professional seal



NOTE:
1. REFERENCE FIXTURE/FURNITURE LEGEND AND WORK AREA EQUIPMENT & ACCESSORIES LEGEND FOR MORE INFORMATION.
2. NOT ALL PROJECTS HAVE SAME SALE AREA EQUIPMENT CONFIGURATIONS. DETAILS ON THIS SHEET ARE FOR REFERENCE ONLY. INSTALL OF ALL EQUIPMENT SHOULD BE VERIFIED WITH THE HELZBERG PROJECT MANAGER.

GENERAL NOTES

SCALE: 1" = 1'-0"

REFERENCE NUMBER	DESCRIPTION
10.0	SPECIALTIES
10.1	CIRCULAR TOURES - LESLIE LOCKE 201A - #RLSC2
10.2	GRAB BAR - BRADLEY 1 1/2" DIA. x 36" SATIN FINISH - 8322-00136
10.3	GRAB BAR - BRADLEY 1 1/2" DIA. x 36" SATIN FINISH - 8322-00136
10.4	WELDED FRAME MIRROR - BOBRICK 18" x 30" H. #B-293 1830
10.5	PAPER TOWEL DISPENSER - BRADLEY SURFACE MOUNTED
10.6	DOUBLE ROLL TOWEL PAPER DISPENSER - BOBRICK SURFACE MOUNTED - B-2740
10.7	SANITARY NAPKIN DISPOSAL BOBRICK SURFACE MOUNTED 7 1/2" W x 11" H x 1 1/2" D
10.8	SOAP DISPENSER - BRADLEY 24 FL. OZ. - 6501
10.9	TOWEL DISPENSER - BOBRICK B-253
10.10	GRAB BAR - BRADLEY 1 1/2" DIA. x 36" SATIN FINISH - 8322-00136
10.11	HELZBERG SIGNAGE - SEE SIGN DRAWINGS
10.12	LED STRIP LIGHTING AS SPECIFIED W/ REMOTE TRANSFORMERS
10.13	EXISTING MALL TILE TO REMAIN
10.14	FLOORING SECURITY GRILLE WITH RECESSED TRACK
10.15	PRASKY TRACK
10.16	EXISTING MALL STRUCTURE TO REMAIN
10.17	MALL NEUTRAL PAINT
10.18	TOILET PAPER DISPENSER - BRADLEY SURFACE MOUNTED SINGLE ROLL - 5684
10.25	FULL LENGTH MIRROR - BOBRICK - 60920, B-290 2060
11.0	EQUIPMENT
15.0	MECHANICAL (REFERENCE MECHANICAL DRAWINGS)
16.0	ELECTRICAL (REFERENCE ELECTRICAL DRAWINGS)
16.1	SECURITY EQUIPMENT

Order Plans @ WWW.LDILine.com