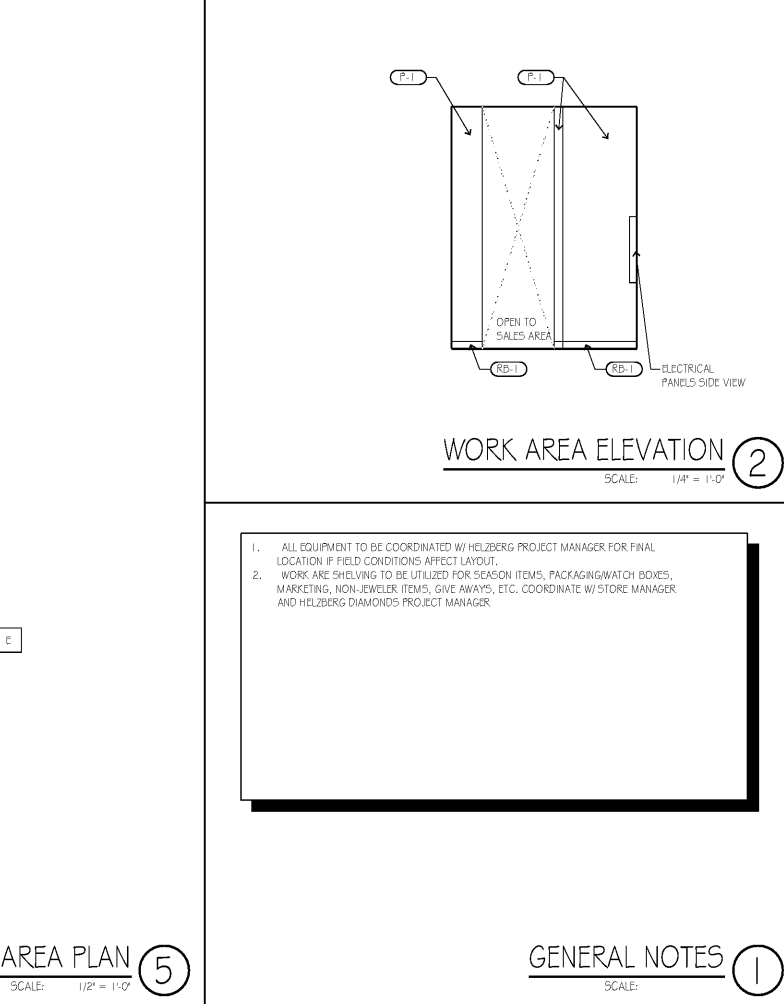
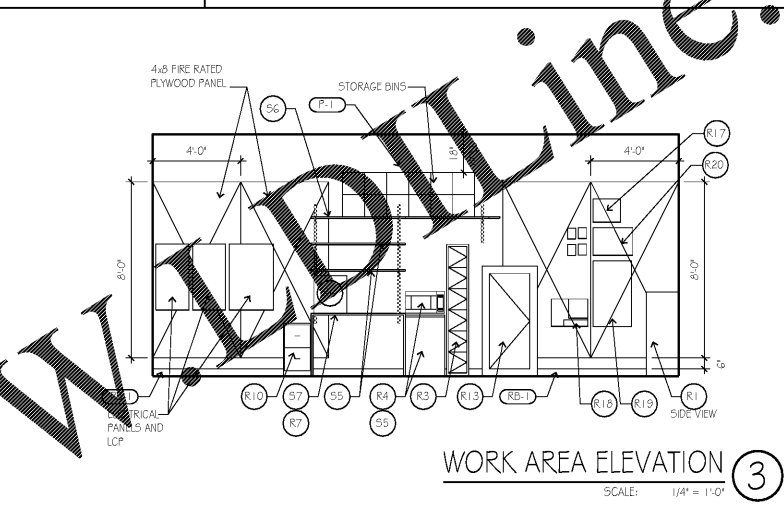
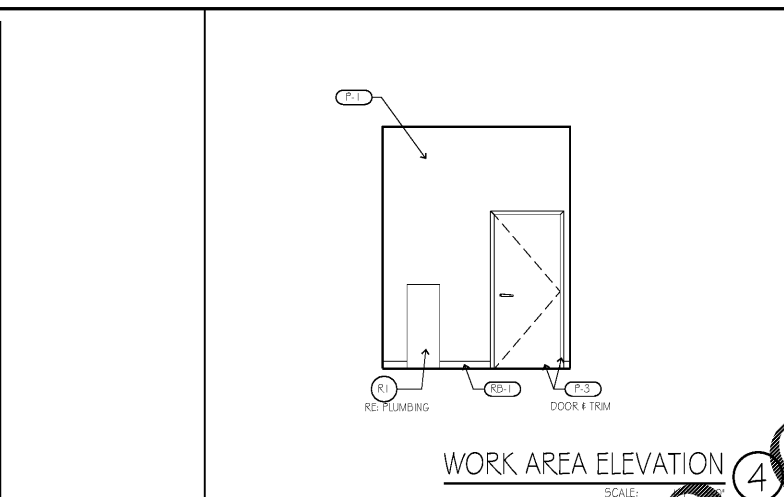
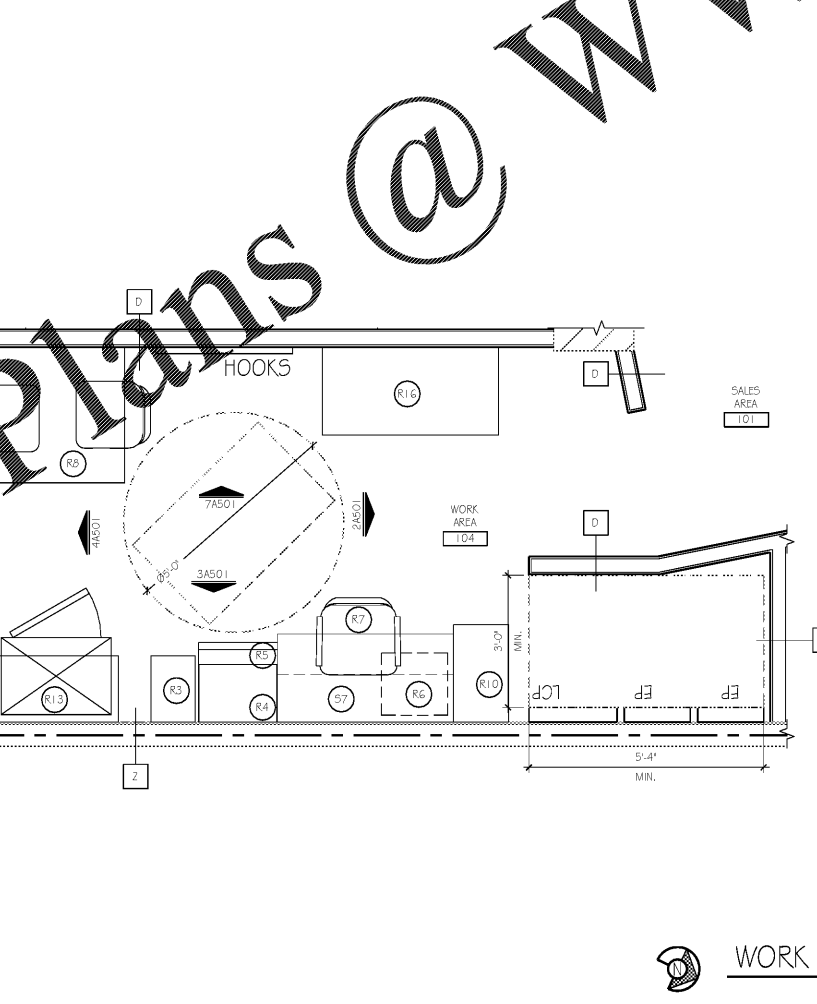
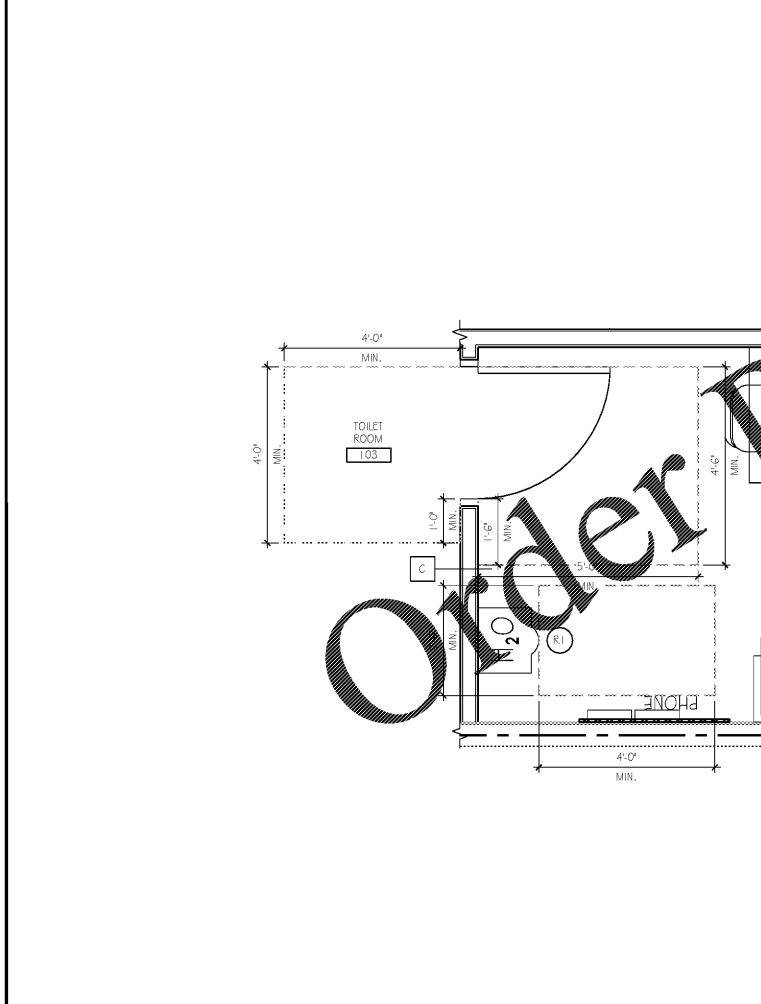
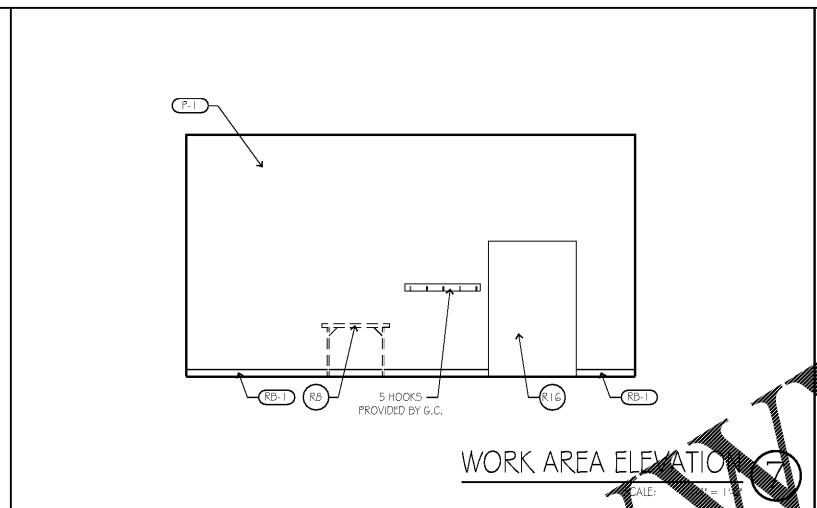
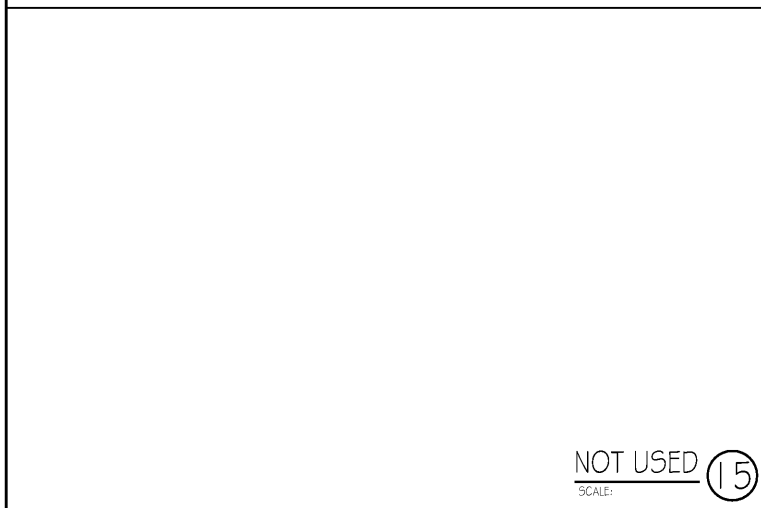


EQUIPMENT	TAG	MANUFACTURER	DESCRIPTION / NOTES	EQUIPMENT	TAG	MANUFACTURER	DESCRIPTION / NOTES
	R10	TBD	VERTICAL FILE CABINET 15W X 26-1/2" X 29H		R21		ALARM PANEL
	R11	TBD	GUEST BEVERAGE COOLER		R22		5 COATS HOOK - BY G.C. @ 9" O.C.
	R12				R23		STANDARD SHELF - WATCH BOX 6" D X 36" W X 80" H
	R13	WORLD WIDE SAFE AND VAULT	GUN SAFE 65" X 36" X 26"		R24		STANDARD SHELF - WATCH BOX 6" D X 24" W X 80" H
	R14	WORLD WIDE SAFE AND VAULT	LARGE SAFE		R25		STANDARD SHELF - WATCH BOX 4" D X 36" W X 80" H
	R15				R26		STANDARD SHELF - WATCH BOX 4" D X 24" W X 80" H
	R16	HDS-DEPT. OF STRATEGIC SPENDING	PROP CART 74" X 48" X 24"		R27		MELAMINE WHITE SHELF BOARD (COMMON: 3/4 IN. X 12 IN. X 72 IN. WHITE THERMALLY-FUSED MELAMINE SHELF W/ 10" WHITE HEAVY DUTY SHELF BRACKETS
	R17		BURGLAR PANEL		R28		COUNTER W/ END PANELS
	R18		MONITOR, KEYBOARD, AND MOUSE		R29		NETWORK CABINET
	R19		NETWORK CABINET		R30		#7 AUDIO CABINET
	R20						

- NOTE:
- THIS IS A MASTER LIST AND NOT ALL WORK AREA EQUIPMENT & ACCESSORIES WILL BE USED.
 - GENERAL CONTRACTOR TO SECURE MELAMINE SHELVING @ 32" O.C. TO METAL STUDS AND TO PROVIDE BLOCKING AS NEEDED. FIELD CUT SHELVING.
 - GENERAL CONTRACTOR TO PROVIDE HEAVY DUTY SHELF BRACKETS ON SURFACE MOUNTED HEAVY DUTY STANDARDS.
 - GENERAL CONTRACTOR TO VERIFY SHELVING HEIGHTS WITH HDS PROJECT MANAGER.



REFERENCE	DESCRIPTION
2.0	EXISTING CONDITIONS
2.01	PROTECTIVE EXISTING TO REMAIN AS IS
2.10	REMOVE EXISTING & DISPOSE OF LEGALLY
2.21	REMOVE EXISTING - CLEAN, STORE & REINSTALL
2.32	REMOVE EXISTING - TURN OVER TO OWNER
4.0	MASONRY
4.1	MASONRY WALL W/ HOZ. JOINT REINF.
4.2	SMOOTH-FACE CMU W/ SOLID GROUT FILL @ ALL CELLS
5.0	METALS
5.1	1/2" GALV. METAL STUDS, 1" O.C. (MAX.) OR AS NOTED
5.2	3/8" X 20 GA METAL STUDS, 16" O.C. (MAX.) UNDO, REFER TO A610 - WALL TYPES
5.3	1/2" X 20 GA METAL STUDS, 16" O.C. (MAX.) UNDO, REFER TO A610 - WALL TYPES
5.4	1/2" X 20 GA METAL STUDS, 16" O.C. (MAX.) UNDO, REFER TO A610 - WALL TYPES
5.5	1/8" HAT CHANNEL, 24" O.C. (MAX.) UNDO, REFER TO A610 - WALL TYPES
5.6	1/2" X 20 GA TRACK W/ 1/4" HAT CHANNEL, REFER TO A610 - WALL TYPES
5.7	1/2" X 20 GA TRACK W/ 1/4" HAT CHANNEL, REFER TO A610 - WALL TYPES
5.8	1/2" X 20 GA TRACK W/ 1/4" HAT CHANNEL, REFER TO A610 - WALL TYPES
5.9	1/2" X 20 GA TRACK W/ 1/4" HAT CHANNEL, REFER TO A610 - WALL TYPES
5.10	1/2" X 20 GA TRACK W/ 1/4" HAT CHANNEL, REFER TO A610 - WALL TYPES
5.11	1/2" X 20 GA TRACK W/ 1/4" HAT CHANNEL, REFER TO A610 - WALL TYPES
5.12	1/2" X 20 GA TRACK W/ 1/4" HAT CHANNEL, REFER TO A610 - WALL TYPES
5.13	1/2" X 20 GA TRACK W/ 1/4" HAT CHANNEL, REFER TO A610 - WALL TYPES
5.14	1/2" X 20 GA TRACK W/ 1/4" HAT CHANNEL, REFER TO A610 - WALL TYPES
5.15	1/2" X 20 GA TRACK W/ 1/4" HAT CHANNEL, REFER TO A610 - WALL TYPES
5.16	1/2" X 20 GA TRACK W/ 1/4" HAT CHANNEL, REFER TO A610 - WALL TYPES
5.17	1/2" X 20 GA TRACK W/ 1/4" HAT CHANNEL, REFER TO A610 - WALL TYPES
5.18	1/2" X 20 GA TRACK W/ 1/4" HAT CHANNEL, REFER TO A610 - WALL TYPES
5.19	1/2" X 20 GA TRACK W/ 1/4" HAT CHANNEL, REFER TO A610 - WALL TYPES
5.20	1/2" X 20 GA TRACK W/ 1/4" HAT CHANNEL, REFER TO A610 - WALL TYPES
5.21	1/2" X 20 GA TRACK W/ 1/4" HAT CHANNEL, REFER TO A610 - WALL TYPES
5.22	1/2" X 20 GA TRACK W/ 1/4" HAT CHANNEL, REFER TO A610 - WALL TYPES
5.23	1/2" X 20 GA TRACK W/ 1/4" HAT CHANNEL, REFER TO A610 - WALL TYPES
5.24	1/2" X 20 GA TRACK W/ 1/4" HAT CHANNEL, REFER TO A610 - WALL TYPES
5.25	1/2" X 20 GA TRACK W/ 1/4" HAT CHANNEL, REFER TO A610 - WALL TYPES
5.26	1/2" X 20 GA TRACK W/ 1/4" HAT CHANNEL, REFER TO A610 - WALL TYPES
5.27	1/2" X 20 GA TRACK W/ 1/4" HAT CHANNEL, REFER TO A610 - WALL TYPES
5.28	1/2" X 20 GA TRACK W/ 1/4" HAT CHANNEL, REFER TO A610 - WALL TYPES
5.29	1/2" X 20 GA TRACK W/ 1/4" HAT CHANNEL, REFER TO A610 - WALL TYPES
5.30	1/2" X 20 GA TRACK W/ 1/4" HAT CHANNEL, REFER TO A610 - WALL TYPES
5.31	1/2" X 20 GA TRACK W/ 1/4" HAT CHANNEL, REFER TO A610 - WALL TYPES
5.32	1/2" X 20 GA TRACK W/ 1/4" HAT CHANNEL, REFER TO A610 - WALL TYPES
5.33	1/2" X 20 GA TRACK W/ 1/4" HAT CHANNEL, REFER TO A610 - WALL TYPES
5.34	1/2" X 20 GA TRACK W/ 1/4" HAT CHANNEL, REFER TO A610 - WALL TYPES
5.35	1/2" X 20 GA TRACK W/ 1/4" HAT CHANNEL, REFER TO A610 - WALL TYPES
5.36	1/2" X 20 GA TRACK W/ 1/4" HAT CHANNEL, REFER TO A610 - WALL TYPES
5.37	1/2" X 20 GA TRACK W/ 1/4" HAT CHANNEL, REFER TO A610 - WALL TYPES
5.38	1/2" X 20 GA TRACK W/ 1/4" HAT CHANNEL, REFER TO A610 - WALL TYPES
5.39	1/2" X 20 GA TRACK W/ 1/4" HAT CHANNEL, REFER TO A610 - WALL TYPES
5.40	1/2" X 20 GA TRACK W/ 1/4" HAT CHANNEL, REFER TO A610 - WALL TYPES
5.41	1/2" X 20 GA TRACK W/ 1/4" HAT CHANNEL, REFER TO A610 - WALL TYPES
5.42	1/2" X 20 GA TRACK W/ 1/4" HAT CHANNEL, REFER TO A610 - WALL TYPES
5.43	1/2" X 20 GA TRACK W/ 1/4" HAT CHANNEL, REFER TO A610 - WALL TYPES
5.44	1/2" X 20 GA TRACK W/ 1/4" HAT CHANNEL, REFER TO A610 - WALL TYPES
5.45	1/2" X 20 GA TRACK W/ 1/4" HAT CHANNEL, REFER TO A610 - WALL TYPES
5.46	1/2" X 20 GA TRACK W/ 1/4" HAT CHANNEL, REFER TO A610 - WALL TYPES
5.47	1/2" X 20 GA TRACK W/ 1/4" HAT CHANNEL, REFER TO A610 - WALL TYPES
5.48	1/2" X 20 GA TRACK W/ 1/4" HAT CHANNEL, REFER TO A610 - WALL TYPES
5.49	1/2" X 20 GA TRACK W/ 1/4" HAT CHANNEL, REFER TO A610 - WALL TYPES
5.50	1/2" X 20 GA TRACK W/ 1/4" HAT CHANNEL, REFER TO A610 - WALL TYPES
5.51	1/2" X 20 GA TRACK W/ 1/4" HAT CHANNEL, REFER TO A610 - WALL TYPES
5.52	1/2" X 20 GA TRACK W/ 1/4" HAT CHANNEL, REFER TO A610 - WALL TYPES
5.53	1/2" X 20 GA TRACK W/ 1/4" HAT CHANNEL, REFER TO A610 - WALL TYPES
5.54	1/2" X 20 GA TRACK W/ 1/4" HAT CHANNEL, REFER TO A610 - WALL TYPES
5.55	1/2" X 20 GA TRACK W/ 1/4" HAT CHANNEL, REFER TO A610 - WALL TYPES
5.56	1/2" X 20 GA TRACK W/ 1/4" HAT CHANNEL, REFER TO A610 - WALL TYPES
5.57	1/2" X 20 GA TRACK W/ 1/4" HAT CHANNEL, REFER TO A610 - WALL TYPES
5.58	1/2" X 20 GA TRACK W/ 1/4" HAT CHANNEL, REFER TO A610 - WALL TYPES
5.59	1/2" X 20 GA TRACK W/ 1/4" HAT CHANNEL, REFER TO A610 - WALL TYPES
5.60	1/2" X 20 GA TRACK W/ 1/4" HAT CHANNEL, REFER TO A610 - WALL TYPES
5.61	1/2" X 20 GA TRACK W/ 1/4" HAT CHANNEL, REFER TO A610 - WALL TYPES
5.62	1/2" X 20 GA TRACK W/ 1/4" HAT CHANNEL, REFER TO A610 - WALL TYPES
5.63	1/2" X 20 GA TRACK W/ 1/4" HAT CHANNEL, REFER TO A610 - WALL TYPES
5.64	1/2" X 20 GA TRACK W/ 1/4" HAT CHANNEL, REFER TO A610 - WALL TYPES
5.65	1/2" X 20 GA TRACK W/ 1/4" HAT CHANNEL, REFER TO A610 - WALL TYPES
5.66	1/2" X 20 GA TRACK W/ 1/4" HAT CHANNEL, REFER TO A610 - WALL TYPES
5.67	1/2" X 20 GA TRACK W/ 1/4" HAT CHANNEL, REFER TO A610 - WALL TYPES
5.68	1/2" X 20 GA TRACK W/ 1/4" HAT CHANNEL, REFER TO A610 - WALL TYPES
5.69	1/2" X 20 GA TRACK W/ 1/4" HAT CHANNEL, REFER TO A610 - WALL TYPES
5.70	1/2" X 20 GA TRACK W/ 1/4" HAT CHANNEL, REFER TO A610 - WALL TYPES
5.71	1/2" X 20 GA TRACK W/ 1/4" HAT CHANNEL, REFER TO A610 - WALL TYPES
5.72	1/2" X 20 GA TRACK W/ 1/4" HAT CHANNEL, REFER TO A610 - WALL TYPES
5.73	1/2" X 20 GA TRACK W/ 1/4" HAT CHANNEL, REFER TO A610 - WALL TYPES
5.74	1/2" X 20 GA TRACK W/ 1/4" HAT CHANNEL, REFER TO A610 - WALL TYPES
5.75	1/2" X 20 GA TRACK W/ 1/4" HAT CHANNEL, REFER TO A610 - WALL TYPES
5.76	1/2" X 20 GA TRACK W/ 1/4" HAT CHANNEL, REFER TO A610 - WALL TYPES
5.77	1/2" X 20 GA TRACK W/ 1/4" HAT CHANNEL, REFER TO A610 - WALL TYPES
5.78	1/2" X 20 GA TRACK W/ 1/4" HAT CHANNEL, REFER TO A610 - WALL TYPES
5.79	1/2" X 20 GA TRACK W/ 1/4" HAT CHANNEL, REFER TO A610 - WALL TYPES
5.80	1/2" X 20 GA TRACK W/ 1/4" HAT CHANNEL, REFER TO A610 - WALL TYPES
5.81	1/2" X 20 GA TRACK W/ 1/4" HAT CHANNEL, REFER TO A610 - WALL TYPES
5.82	1/2" X 20 GA TRACK W/ 1/4" HAT CHANNEL, REFER TO A610 - WALL TYPES
5.83	1/2" X 20 GA TRACK W/ 1/4" HAT CHANNEL, REFER TO A610 - WALL TYPES
5.84	1/2" X 20 GA TRACK W/ 1/4" HAT CHANNEL, REFER TO A610 - WALL TYPES
5.85	1/2" X 20 GA TRACK W/ 1/4" HAT CHANNEL, REFER TO A610 - WALL TYPES
5.86	1/2" X 20 GA TRACK W/ 1/4" HAT CHANNEL, REFER TO A610 - WALL TYPES
5.87	1/2" X 20 GA TRACK W/ 1/4" HAT CHANNEL, REFER TO A610 - WALL TYPES
5.88	1/2" X 20 GA TRACK W/ 1/4" HAT CHANNEL, REFER TO A610 - WALL TYPES
5.89	1/2" X 20 GA TRACK W/ 1/4" HAT CHANNEL, REFER TO A610 - WALL TYPES
5.90	1/2" X 20 GA TRACK W/ 1/4" HAT CHANNEL, REFER TO A610 - WALL TYPES
5.91	1/2" X 20 GA TRACK W/ 1/4" HAT CHANNEL, REFER TO A610 - WALL TYPES
5.92	1/2" X 20 GA TRACK W/ 1/4" HAT CHANNEL, REFER TO A610 - WALL TYPES
5.93	1/2" X 20 GA TRACK W/ 1/4" HAT CHANNEL, REFER TO A610 - WALL TYPES
5.94	1/2" X 20 GA TRACK W/ 1/4" HAT CHANNEL, REFER TO A610 - WALL TYPES
5.95	1/2" X 20 GA TRACK W/ 1/4" HAT CHANNEL, REFER TO A610 - WALL TYPES
5.96	1/2" X 20 GA TRACK W/ 1/4" HAT CHANNEL, REFER TO A610 - WALL TYPES
5.97	1/2" X 20 GA TRACK W/ 1/4" HAT CHANNEL, REFER TO A610 - WALL TYPES
5.98	1/2" X 20 GA TRACK W/ 1/4" HAT CHANNEL, REFER TO A610 - WALL TYPES
5.99	1/2" X 20 GA TRACK W/ 1/4" HAT CHANNEL, REFER TO A610 - WALL TYPES
5.100	1/2" X 20 GA TRACK W/ 1/4" HAT CHANNEL, REFER TO A610 - WALL TYPES

hckloverarchitect
8813 PENROSE LANE, SUITE 400 • LENEXA, KS 66219
ph: 913 648 8181 • fx: 913 649 1275 • www.hcklover.net

THIS DRAWING has been prepared by the Architect, or prepared under his direct supervision or on his behalf. It is intended for use only for the project, all drawings, specifications, items and designs, including the general layout, form, arrangement, and construction of spaces and elements contained, constitute the original, unaltered work of the Architect. Any reproduction, use, or disclosure of the information contained herein without the written consent of the Architect is strictly prohibited.

© 2019 H.C. KLOVER ARCHITECT

THE ARCHITECT DISCLAIMS responsibility for the existing building structure, site conditions, existing construction elements, or any documents, drawings or other instruments used for any part of this project which do not bear the Architect's seal. The Architect's services are intended only for the client of the Project. No reliance is assumed by the Architect for the benefit of any other party.

RELATED DOCUMENTS: This drawing is a single component of an integrated set of Construction Documents, General and Supplementary Conditions of the Contract, General Requirements, Specifications and other documents which shall be read in conjunction with the Project Manual. The design intent of the whole of the Construction Documents shall prevail over any individual drawing or detail. The Architect shall not be responsible for providing a complete Project Manual.

CONTRACTOR'S OBLIGATION: The Contractor shall verify all conditions, dimensions and requirements of the Landlord, if applicable to the work, and shall obtain all necessary approvals and permits prior to construction. Commencement of work constitutes verification and acceptance of all existing conditions. Application of a material or equipment item to the work shall be subject to the Contractor's compliance with the Work, and assumption of responsibility for satisfactory installation.

MEASUREMENTS: All measurements shall be taken to the finished surface of the work unless otherwise indicated.

CONTRACTOR'S OBLIGATION: The Contractor shall verify all conditions, dimensions and requirements of the Landlord, if applicable to the work, and shall obtain all necessary approvals and permits prior to construction. Commencement of work constitutes verification and acceptance of all existing conditions. Application of a material or equipment item to the work shall be subject to the Contractor's compliance with the Work, and assumption of responsibility for satisfactory installation.

HELZBERG DIAMONDS
STORE 211, NG-M
MALL OF GEORGIA
3333 BUFORD DR. 2070C
BUFORD, GEORGIA 30519

project title
project number 19007.019
drawing issuance
OWNER/PERMIT/BD 1.7.20
drawing revisions
Date: Description:
professional seal
drawing title WORK AREA PLAN & ELEVATIONS
drawing number **A501**