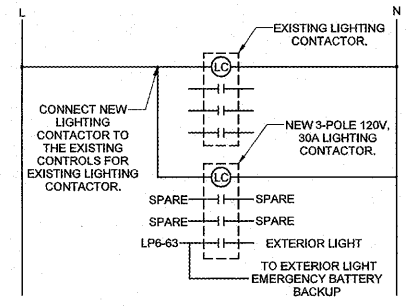


KEYNOTES

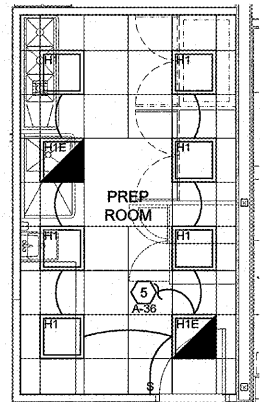
- CONNECT TO EXISTING CIRCUIT ROUTED THROUGH CONTACTOR CURRENTLY SERVING EXTERIOR LIGHTING. VERIFY EXISTING CIRCUIT CAN ACCOMMODATE NEW LOAD.
 - CONNECT TO EXISTING CIRCUIT ROUTED THROUGH CONTACTOR CURRENTLY SERVING PANAFLEX. VERIFY EXISTING CIRCUIT CAN ACCOMMODATE NEW LOAD.
 - MOUNT EMERGENCY BATTERY PACK INSIDE STORE IN ACCESSIBLE SPACE ABOVE CEILING. CONNECT UN-SWITCHED HOT LEG OF BRANCH CIRCUIT TO BATTERY PACK. CONNECT SWITCHED LEG OF BRANCH CIRCUIT ROUTED THROUGH CONTACTOR TO LIGHT FIXTURE.
 - ROUTE CIRCUIT THROUGH NEW 3-POLE LIGHTING CONTACTOR. REFERENCE ELECTRICAL FLOOR PLAN FOR LOCATION.
 - CONNECT TO EXISTING CIRCUITRY CURRENTLY SERVING AREA LIGHTING. VERIFY EXISTING CIRCUIT CAN ACCOMMODATE NEW LOAD.
 - POWER PACK FOR OCCUPANCY SENSOR. MOUNT ON WALL AT 96" AFF. CONNECT TO UN-SWITCHED HOT LEG OF LIGHTING CIRCUIT. PROGRAM FOR AUTO ON/OFF.
 - CONNECT TO EXISTING CIRCUIT AND CONTINUE CURRENTLY SERVING AREA LIGHTING. VERIFY EXISTING CIRCUIT CAN ACCOMMODATE NEW LOAD.
 - E.C. SHALL PROVIDE NEW LIGHTING CONTACTOR. REFERENCE LIGHTING CONTACTOR DETAIL FOR ADDITIONAL INFORMATION.
 - BACKLASH FASCIA BOXES WILL BE ERECTED BY OWNER TO 105'-0" LENGTHS. UP TO (7) 15'-0" SECTIONS AT A TIME. FASCIAS MAY BE LAID OUT STARTING FROM LEFT TO RIGHT. THE ELECTRICAL CONNECTION POINT IS ALWAYS THE TOP CENTER OF THE LEFT BOX.
- ELECTRICAL CONTRACTOR SHALL COMPLETE THE "SYSTEM 90 INSTALLATION SUMMARY" LOCATED IN DIVISION 11 OF THE SPECIFICATIONS BOOKLET AND MAIL TO:
MR. PAUL MAYFIELD
SHARPLINE CONVERTING
1520 S TYLER RD.
WICHITA, KS 67227
1-800-888-4888

LIGHTING NOTES

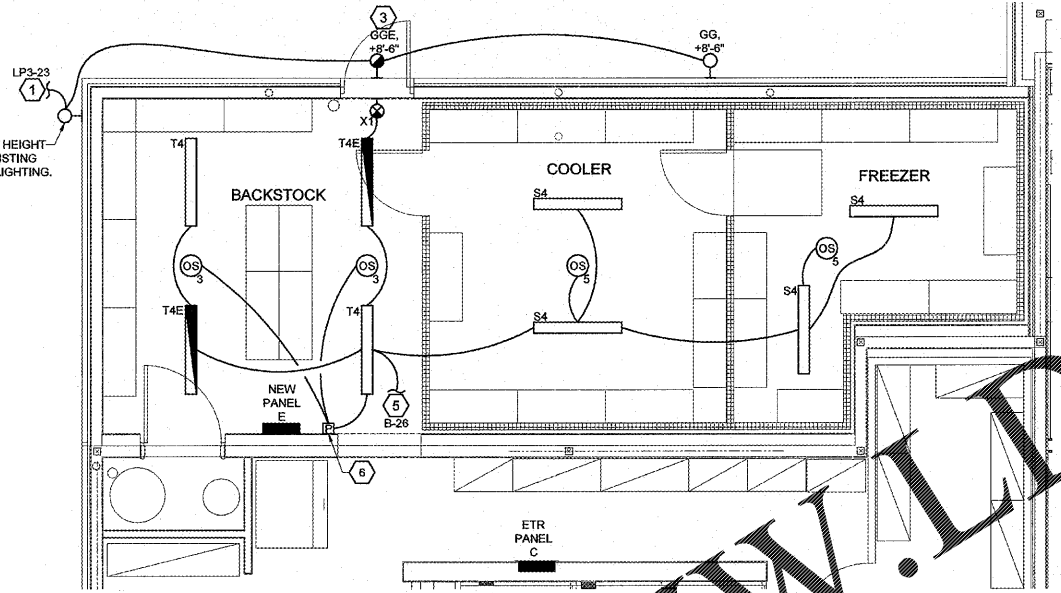
- EXIT SIGN MOUNTING
 - WALL FIXTURE: CENTER 12" ABOVE DOOR OPENING.
 - CEILING PENDANT FIXTURE: ON CEILING OR AT HEIGHT SPECIFIED ON DRAWINGS.
 - THE USE OF TRITIUM BASED RADIOACTIVE EXIT SIGNAGE SHALL NOT BE ALLOWED.
- EMERGENCY LIGHT INSTALLATION FIXTURE MOUNTING
 - WALL FIXTURE: 12" BELOW FINISHED CEILING OR +10'-0" IN AREAS OF EXPOSED STRUCTURE UNLESS NOTED OTHERWISE.
 - PENDANT FIXTURE: BOTTOM CHORD OF STRUCTURE OR AT HEIGHT SPECIFIED ON DRAWINGS.
 - REMOTE HEAD FIXTURE: HEADS CENTERED ABOVE DOOR OPENING +9'-0" UNLESS NOTED OTHERWISE.
- ELECTRICAL CONNECTION
 - REFER TO MANUFACTURER'S WRITTEN INSTRUCTIONS. ALLOW BATTERY TO CHARGE CONTINUOUSLY FOR A MINIMUM OF 168 HOURS BEFORE INITIAL TESTING.
 - AFTER EMERGENCY LIGHT HAS BEEN POWERED, DO NOT TURN OFF FOR EXTENDED PERIODS OF TIME.
- EXIT SIGNS AND EMERGENCY LIGHTS SHALL BE FED FROM THE SAME BRANCH CIRCUIT AS THAT SERVING THE NORMAL LIGHTING IN THAT AREA AND CONNECTED AHEAD OF ANY LOCAL SWITCHES OR TIME CLOCKS.
- EMERGENCY EXIT ILLUMINATION SHALL BE SUPPLIED FROM STORAGE BATTERY THAT IS TO PROVIDE 90 MINUTES OF CONTINUED ILLUMINATION IN CASE OF PRIMARY POWER LOSS.
- CONTRACTOR SHALL BE RESPONSIBLE FOR ASSURING THAT ALL NEW LIGHT FIXTURES WORK PROPERLY. REPORT DEFECTIVE OR DAMAGED COMPONENTS TO OWNER.
- CONTRACTOR SHALL PROVIDE ALL LABOR AND MATERIALS TO MAINTAIN BRANCH CIRCUITS TO EXISTING LIGHT FIXTURES THAT ARE TO REMAIN. WHERE EXISTING CIRCUITS ARE ROUTED IN AREAS BEING DEMOLISHED, RE-ROUTE IN NEW CONSTRUCTION AND RECONNECT.
- CONTRACTOR SHALL FURNISH AND INSTALL UNISTRUT AS REQUIRED TO MOUNT FIXTURES TO STRUCTURAL MEMBERS.
- CONDUIT AND WIRING IN AREAS WHERE EXPOSED SHALL BE ROUTED AT 90 DEGREE ANGLES PERPENDICULAR OR PARALLEL TO BUILDING LINES.



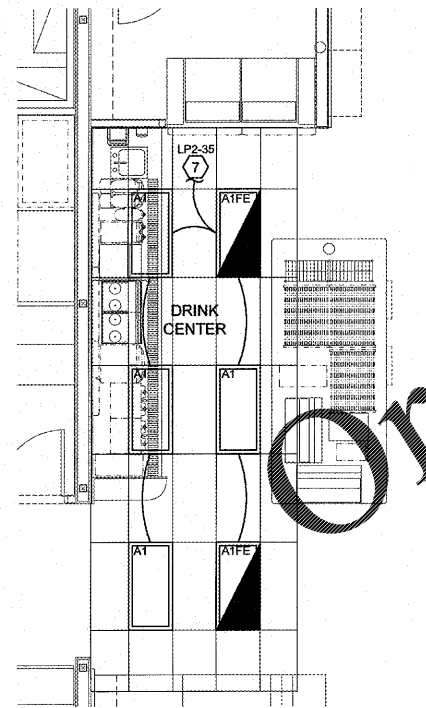
5 LIGHTING CONTACTOR "LC2"
NTS



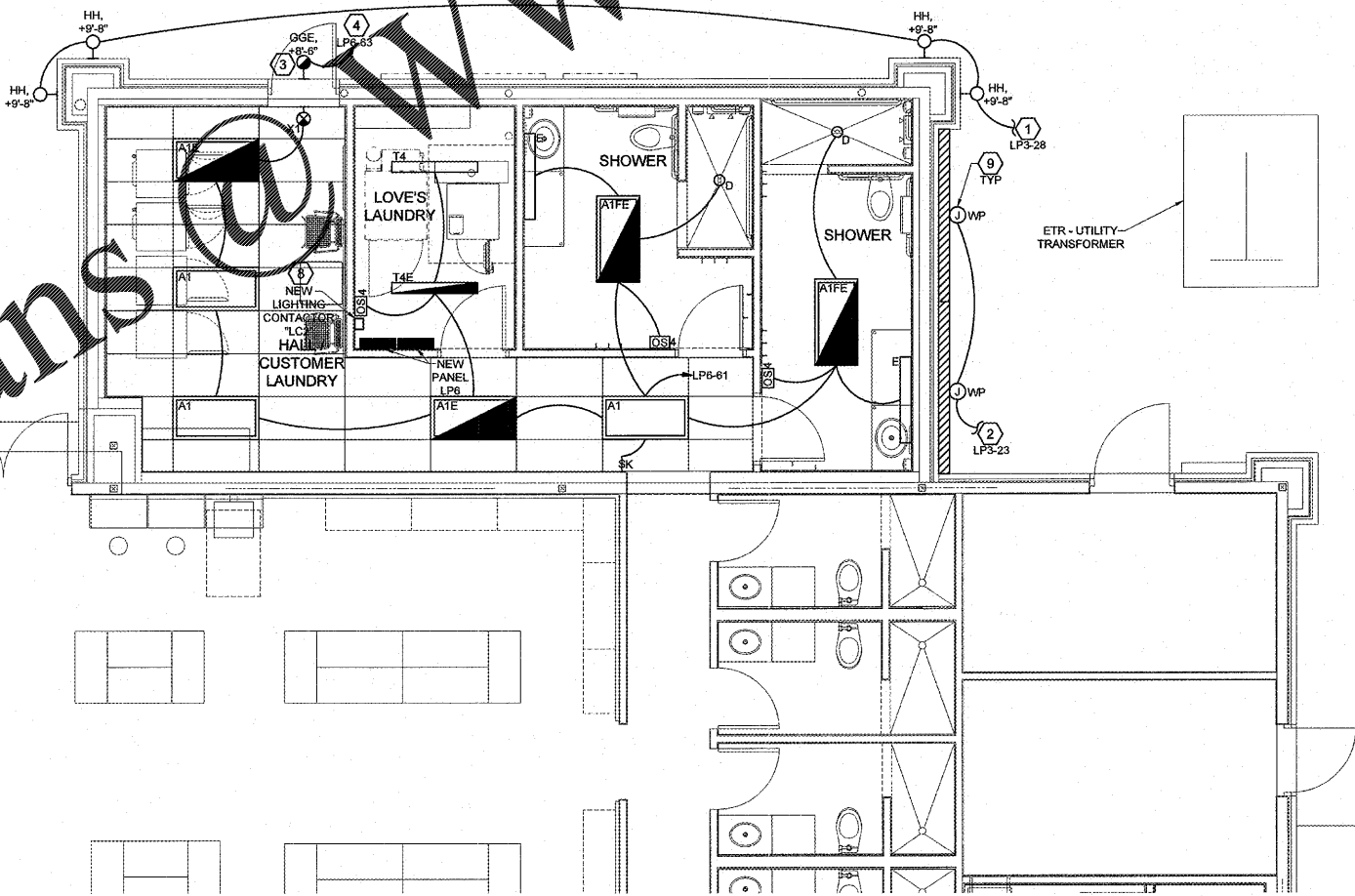
4 PREP ROOM LIGHTING PLAN
SCALE: 1/4" = 1'-0"



3 COOLER/FREEZER LIGHTING PLAN
SCALE: 1/4" = 1'-0"



2 DRINK CENTER LIGHTING PLAN
SCALE: 1/4" = 1'-0"



1 LAUNDRY/SHOWER LIGHTING PLAN
SCALE: 1/4" = 1'-0"

COORDINATE THE EXTENT OF ALL REQUIRED ELECTRICAL DEMOLITION WITH CONSTRUCTION MANAGER

EXISTING CONDITIONS WERE TAKEN FROM ORIGINAL DRAWINGS AND MAY NOT REFLECT EXACT "AS-BUILT" CONDITIONS. CONTRACTOR SHALL FIELD VERIFY ALL EXISTING CONDITIONS PRIOR TO SUBMITTING FINAL BIDS. CONTRACTOR SHALL CAREFULLY COORDINATE NEW WORK AND DEMOLITION WITH ALL OTHER DISCIPLINES AND EXISTING CONDITIONS.

EACH SUBCONTRACTOR IS RESPONSIBLE FOR HAVING A THOROUGH KNOWLEDGE OF ALL DRAWINGS AND SPECIFICATIONS IN THEIR RELATED FIELD. THE FAILURE TO ACQUAINT HIMSELF WITH THIS KNOWLEDGE DOES NOT RELIEVE THE RESPONSIBILITY OF PERFORMING HIS WORK PROPERLY. NO ADDITIONAL COMPENSATION SHALL BE ALLOWED BECAUSE OF CONDITIONS THAT OCCUR DUE TO FAILURE TO FAMILIARIZE WORKERS WITH THIS KNOWLEDGE.

HFA
Creative Solutions
Meaningful Plans

HARRISON FRENCH & ASSOCIATES
ARCHITECTS & ENGINEERS

1705 S. Walton Blvd., Suite 3
Bentonville, Arkansas 72712
+ 479.273.7790
F 888.520.9685
www.hfa-ae.com

STIPULATION FOR REUSE
THIS DRAWING AND ANY INFORMATION CONTAINED HEREIN IS THE PROPERTY OF HARRISON FRENCH & ASSOCIATES, ARCHITECTS & ENGINEERS. IT IS TO BE USED ONLY FOR THE PROJECT AND SITE SPECIFICALLY IDENTIFIED HEREIN. IT IS NOT TO BE REPRODUCED, COPIED, OR TRANSMITTED IN ANY FORM OR BY ANY MEANS, ELECTRONIC OR MECHANICAL, INCLUDING PHOTOCOPYING, RECORDING, OR BY ANY INFORMATION STORAGE AND RETRIEVAL SYSTEM, WITHOUT THE WRITTEN PERMISSION OF HARRISON FRENCH & ASSOCIATES, ARCHITECTS & ENGINEERS.

1911 HWY 34 W
DILLON, SC 29536

FRESH KITCHEN LITE REMODEL/
SHOWER & LAUNDRY ADDITION/
FREEZER, COOLER & STORAGE
ADDITION

PROJECT NUMBER: 03-18-10371

Loves
Travel Stop &
Country Stores

HARRISON FRENCH & ASSOCIATES, LTD
No. C03060

SOUTH CAROLINA
REGISTERED PROFESSIONAL
No. 35952
NATHAN K. CONNORS

JAN 02 2020

ISSUE BLOCK

STORE NO.	371
DOCUMENT DATE	01/03/20
CHECKED BY:	NKC
DRAWN BY:	CAR
PROTO CYCLE:	

ENLARGED LIGHTING FLOOR PLANS

SHEET: **E3**