

STIPULATION FOR REUSE
 THIS DRAWING WAS PREPARED FOR THE CLIENT'S USE ONLY. IT IS NOT TO BE REPRODUCED, COPIED, REUSED, OR TRANSMITTED IN ANY FORM OR BY ANY MEANS, WITHOUT THE WRITTEN PERMISSION OF HARRISON FRENCH & ASSOCIATES. ANY REUSE OF THIS DRAWING FOR ANY OTHER PROJECT WITHOUT THE WRITTEN PERMISSION OF HARRISON FRENCH & ASSOCIATES IS STRICTLY PROHIBITED. HARRISON FRENCH & ASSOCIATES SHALL NOT BE RESPONSIBLE FOR ANY DAMAGE OR LIABILITY ARISING FROM THE REUSE OF THIS DRAWING.

1911 HWY 34 W
 DILLON, SC 29536
 FRESH KITCHEN LITE REMODEL/
 SHOWER & LAUNDRY ADDITION/
 FREEZER, COOLER & STORAGE
 ADDITION
 PROJECT NUMBER: 03-18-10371

Loves
 Travel Stop &
 Country Stores

HARRISON FRENCH & ASSOCIATES, L.P.
 ARCHITECTS & ENGINEERS
 No. 003930
 JOHN KENNETH RILEY
 PROFESSIONAL SEAL
 No. 36083
 JAN 02 2020

ISSUE BLOCK

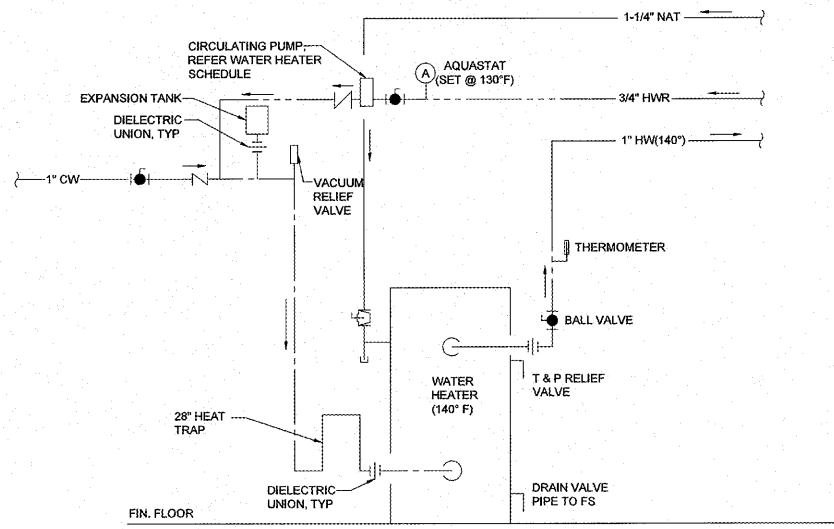
STORE NO. 371
 DOCUMENT DATE: 01/03/20
 CHECKED BY: JKR
 DRAWN BY: JSB
 PROTO CYCLE:

PLUMBING DETAILS

SHEET: **P3**

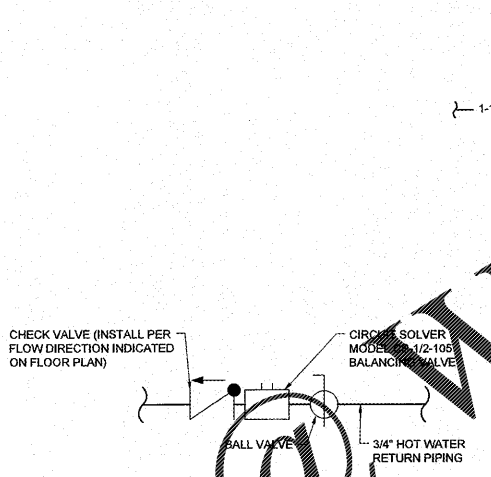
PLUMBING LEGEND

LINETYPE/SYMBOL	DESCRIPTION
---	VENT LINE
—W—	SANITARY SEWER
---	DOMESTIC COLD WATER
---	DOMESTIC HOT WATER
---	DOMESTIC HOT WATER RETURN
⊥	WALL CLEAN OUT
⊗	CONNECT TO EXISTING
ETR	EXISTING TO REMAIN

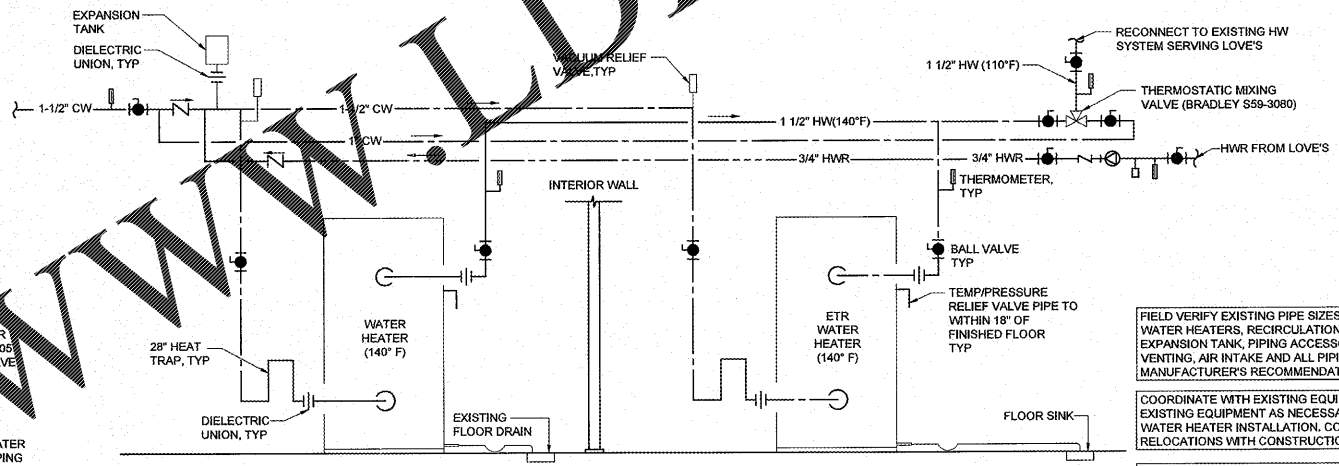


NOTE: WATER HEATER AND PLUMBING SHALL BE INSTALLED AS TO ALLOW ACCESS TO THE WATER HEATER FOR MAINTENANCE, SERVICING, AND REPLACEMENT, WITHOUT HAVING TO DISASSEMBLE MAIN PORTIONS OF THE PLUMBING IN ORDER TO DO SO. IF IT IS FOUND THAT THE PLUMBING DOES NOT ALLOW THIS ACCESS THE PLUMBER WILL BE REQUIRED TO REDO THE PLUMBING TO THE OWNER'S SATISFACTION AT THE PLUMBERS OWN COST.

7 WATER HEATER SCHEMATIC
 SCALE: N.T.S.



HOT WATER BALANCING VALVE DETAIL
 SCALE: N.T.S.



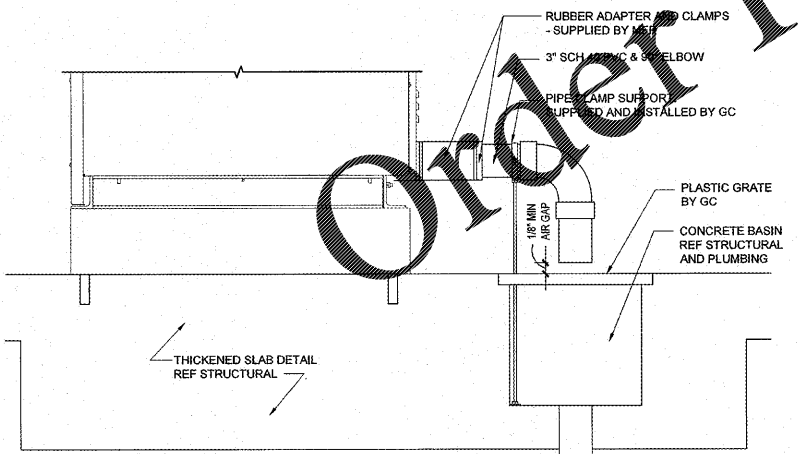
NOTE: WATER HEATER AND PLUMBING SHALL BE INSTALLED AS TO ALLOW ACCESS TO THE WATER HEATER FOR MAINTENANCE, SERVICING, AND REPLACEMENT, WITHOUT HAVING TO DISASSEMBLE MAIN PORTIONS OF THE PLUMBING IN ORDER TO DO SO. IF IT IS FOUND THAT THE PLUMBING DOES NOT ALLOW THIS ACCESS THE PLUMBER WILL BE REQUIRED TO REDO THE PLUMBING TO THE OWNER'S SATISFACTION AT THE PLUMBERS OWN COST.

FIELD VERIFY EXISTING PIPE SIZES. INSTALL WATER HEATERS, RECIRCULATION PUMP, EXPANSION TANK, PIPING ACCESSORIES, VENTING, AIR INTAKE AND ALL PIPING PER MANUFACTURER'S RECOMMENDATIONS.

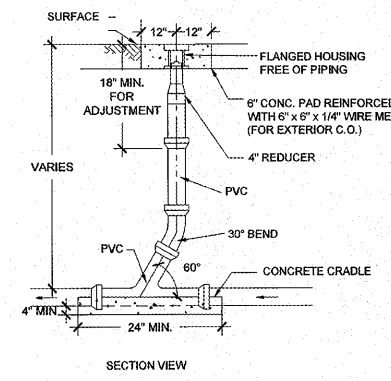
COORDINATE WITH EXISTING EQUIPMENT. RELOCATE EXISTING EQUIPMENT AS NECESSARY FOR NEW WATER HEATER INSTALLATION. COORDINATE ALL RELOCATIONS WITH CONSTRUCTION MANAGER.

REMOVE/DEMO EXISTING RECIRCULATION PUMP, THERMOSTATIC MIXING VALVE, AND EQUIPMENT ASSOCIATED WITH THE EXISTING WATER HEATER FOR NEW WATER HEATER SYSTEM CONFIGURATION. INSTALL NEW SYSTEM PER MANUFACTURER'S RECOMMENDATION.

5 WATER HEATER SCHEMATIC
 SCALE: N.T.S.

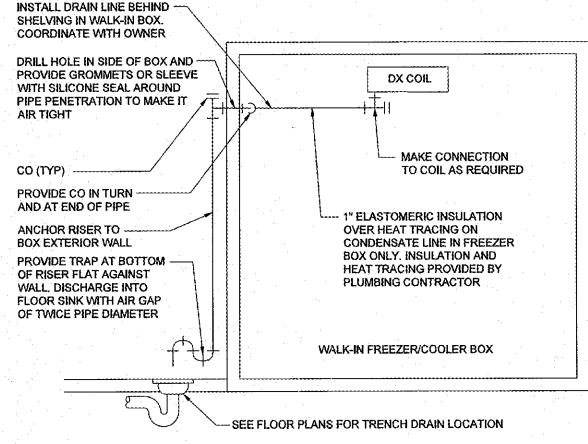


4 DRAIN PIPE DETAIL
 SCALE: N.T.S.



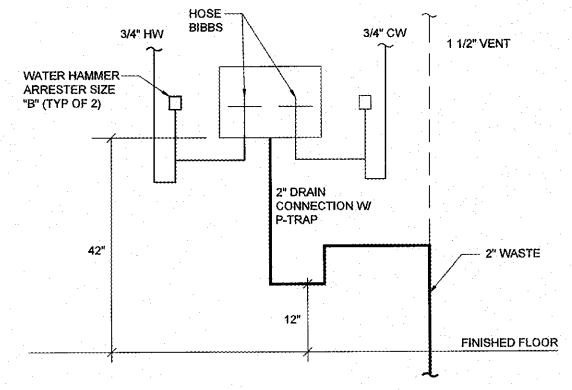
NOTES:
 1. COVER SHALL HAVE A LOCKING LID MARKED 'SEWER'.
 2. DESIGN BASIS IS JAY R. SMITH MODEL 4250; REFER TO SPECIFICATIONS

3 SANITARY SEWER CLEANOUT
 SCALE: N.T.S.



INSTALL PIPE AS HIGH AS POSSIBLE, ANCHORED TO WALL OF BOX WITH SUPPORTS AT MAXIMUM 6'-0\"/>

2 FREEZER/COOLER CONDENSATE DRAIN DETAIL
 N.T.S.



1 WASHER UTILITY BOX DETAIL
 SCALE: N.T.S.