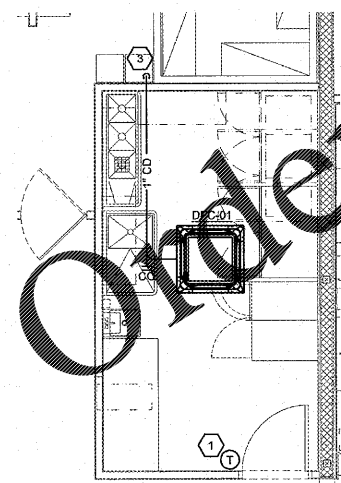
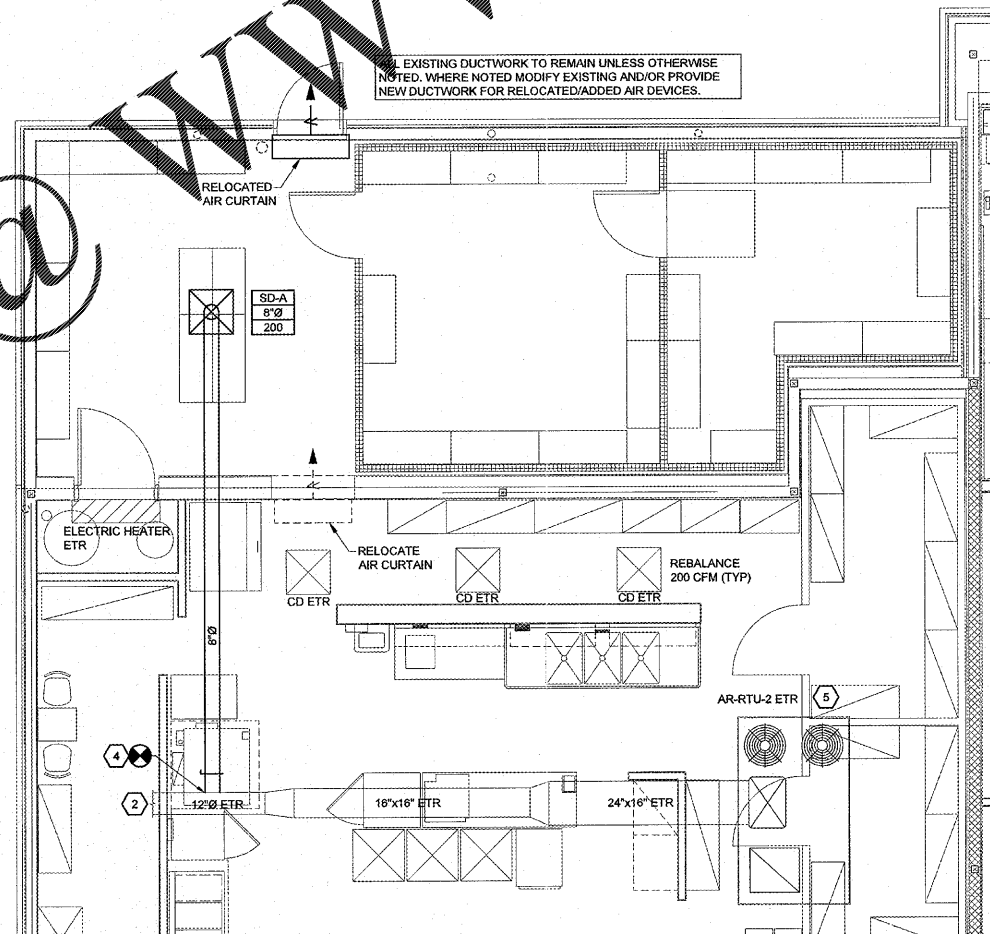


3 KEY PLAN
SCALE: 1/16"=1'-0"



2 PREP ROOM HVAC PLAN
SCALE: 1/4"=1'-0"



1 BACKSTOCK/COOLER/FREEZER ADDITION HVAC PLAN
SCALE: 1/4"=1'-0"

MECHANICAL SYMBOLS	
	RECTANGULAR DUCT 18" WIDE BY 12" DEEP
	12" DIAMETER ROUND DUCT
	SUPPLY DUCT IN SECTION
	RETURN OR EXHAUST DUCT IN SECTION
	ELBOW WITH TURNING VANES
	ROUND (OR OVAL) ELBOW
	SUPPLY AIR DIFFUSER WITH ROUND SUPPLY DUCT
	RETURN OR EXHAUST AIR DIFFUSER WITH ROUND DUCT
	DIFFUSER OR GRILLE TYPE BRANCH DUCT & NECK SIZE CFM
	MANUAL BALANCE DAMPER
	CONNECT TO EXISTING
	EXISTING TO REMAIN
	FIRE DAMPER

- GENERAL NOTES**
- ALL MECHANICAL HVAC AND PLUMBING WORK SHALL BE PERFORMED IN STRICT ACCORDANCE WITH THE BASE BUILDING SPECIFICATION AND WITH THE LATEST EDITION OF THE PREVAILING STATE MECHANICAL, PLUMBING AND BUILDING CODES AS WELL AS ALL REGULATIONS THAT MAY APPLY. IN CASE OF CONFLICT BETWEEN THE CONTRACT DOCUMENTS AND A GOVERNING CODE OR ORDINANCE THE MORE STRINGENT STANDARD SHALL APPLY.
 - COORDINATE EXACT LOCATIONS OF AIR DISTRIBUTION DEVICES WITH CEILING AND LIGHT FIXTURE LAYOUT - VERIFY WITH THE ARCHITECT.
 - ALL RECTANGULAR SUPPLY DUCTS ELBOWS SHALL HAVE SINGLE THICKNESS TURNING VANES.
 - ALL AIR CONDITIONING DUCTWORK SHALL BE SMACNA 1" PRESSURE CLASSIFICATION WITH SEAL CLASS 'A'.
 - DUCT SIZES SHALL BE AN ACTUAL INSIDE CLEAR DIMENSIONS. SHEET METAL CONTRACTORS SHALL INCREASE SIZES FOR DUCTWORK REQUIRED TO BE LINED TO ALLOW FOR 1/8" THICK LINER EQUIVALENT TO KNAUF. THE TERM "MINIMUM" SHALL HAVE A VALUE 4.5.
 - COORDINATE ROUTING OF DUCTWORK WITH STRUCTURE WITH THE LOCATION OF COLUMNS, JOIST AND BEAM.
 - ALL ROUND AIR CONDITIONING DUCTWORK SHALL HAVE 2-INCH THICK EXTERIOR DUCT WRAP CONSISTING OF A FIBERGLASS BLANKET WITH FACTORY APPLIED VAPOR BARRIER FACING AND HAVING A MINIMUM R-VALUE OF 5.8, UNLESS NOTED OTHERWISE.
 - IT IS THE INTENT TO HAVE ALL AIR SYSTEMS INCLUDING KITCHEN EXHAUST AND MAKE-UP AIR BALANCED BY AN INDEPENDENT TAB CERTIFIED NEBB CONTRACTOR. AIR QUANTITIES IN MAIN DUCT SHALL BE MEASURED BY PITOT TUBE TRAVERSES. OUTLET AND INLET AIR QUANTITIES SHALL BE DETERMINED IN ACCORDANCE WITH NEBB PROCEDURES. THE NEBB TAB FIRM SHALL PROVIDE A CERTIFICATE OF CONFORMANCE CERTIFICATION TO THE OWNER.
 - UNLESS DIMENSIONED, THE WORK SHOWN ON THE CONTRACT DRAWINGS IS DIAGRAMMATIC, ILLUSTRATING THE GENERAL ARRANGEMENT. CONTRACTOR SHALL ADHERE TO ARRANGEMENT SHOWN AS CLOSELY AS THE ACTUAL CONSTRUCTION WILL PERMIT.
 - CONTRACTOR SHALL VERIFY EXACT EQUIPMENT DIMENSIONS, CLEARANCES, AND FIELD DIMENSIONS RELATIVE TO LOCATIONS OF STRUCTURAL FRAMING. CHANGES REQUIRED IN ROUTING OR SIZES OF DUCTWORK TO MAKE WORK SHOWN CONFORM TO PROJECT REQUIREMENTS RESULTING FROM FIELD COORDINATION PROBLEMS SHALL BE IDENTIFIED, ILLUSTRATED, AND SUBMITTED TO THE ENGINEER FOR PRIOR REVIEW AND APPROVAL BEFORE INSTALLATION.

(X) KEYNOTES

- WALL MOUNTED THERMOSTAT AT 54" AFF. COORDINATE PLACEMENT WITH WALL DECOR AND EQUIPMENT. FIELD VERIFY WITH OWNER'S REPRESENTATIVE FOR THE FINAL LOCATION PRIOR TO INSTALLATION.
- EXISTING DUCTWORK AND ASSOCIATED DUCTWORK ACCESSORIES TO REMAIN UNLESS SHOWN OTHERWISE. FIELD VERIFY EXACT LOCATION.
- CONDENSATE DOWN AND INDIRECTLY DRAIN WITH AIR GAP INTO FLOOR DRAIN; STRAP TIGHT TO WALL 2" ABOVE RIM.
- CONNECT NEW DUCTWORK TO EXISTING DUCTWORK. REDISTRIBUTE AIR FROM EXISTING DUCTWORK TO MATCH NEW CFM REQUIREMENTS. FIELD VERIFY LOCATION OF EXISTING DUCTWORK.
- EXISTING AR-RTU-2 TO REMAIN ON ROOF; MODEL: AA0NRM008. FIELD VERIFY UNIT IS IN PROPER WORKING ORDER AND REPLACE ANY NEEDED ACCESSORIES PER MANUFACTURER'S RECOMMENDATIONS. MAINTAIN SUPPLY AIR BALANCE OF 2700 CFM AND OUTSIDE AIR BALANCE OF 840 CFM.

EXISTING CONDITIONS WERE TAKEN FROM ORIGINAL DRAWINGS AND MAY NOT REFLECT EXACT "AS-BUILT" CONDITIONS. CONTRACTOR SHALL FIELD VERIFY ALL EXISTING CONDITIONS PRIOR TO SUBMITTING FINAL BIDS. CONTRACTOR SHALL CAREFULLY COORDINATE NEW WORK AND DEMOLITION WITH ALL OTHER DISCIPLINES AND EXISTING CONDITIONS.

EACH SUBCONTRACTOR IS RESPONSIBLE FOR HAVING A THOROUGH KNOWLEDGE OF ALL DRAWINGS AND SPECIFICATIONS IN THEIR RELATED FIELD. THE FAILURE TO ACQUAINT HIMSELF WITH THIS KNOWLEDGE DOES NOT RELIEVE THE RESPONSIBILITY OF PERFORMING HIS WORK PROPERLY. NO ADDITIONAL COMPENSATION SHALL BE ALLOWED BECAUSE OF CONDITIONS THAT OCCUR DUE TO FAILURE TO FAMILIARIZE WORKERS WITH THIS KNOWLEDGE.

HFA
Creative Solutions
Meaningful Plans

HARRISON FRENCH & ASSOCIATES
ARCHITECTS & ENGINEERS

1705 S. Walton Blvd., Suite 3
Bentonville, Arkansas 72712
t 479.273.7780
f 888.520.9685
www.hf-a.com

STIPULATION FOR REUSE
THIS DRAWING WAS PREPARED FOR THE
CHARACTERISTICS AND VERIFIED BASE LAYOUT
ON THE DATE INDICATED. IT IS THE USER'S
RESPONSIBILITY TO VERIFY THE ACCURACY OF
ANOTHER PROJECT PREPARED BY THE ARCHITECT
OR ENGINEER. THIS DRAWING IS NOT TO BE
REUSED FOR ANY OTHER PROJECT WITHOUT THE
WRITTEN PERMISSION OF THE ARCHITECT
OR ENGINEER.

1911 HWY 34 W
DILLON, SC 29536

FRESH KITCHEN LITE REMODEL/
SHOWER & LAUNDRY ADDITION/
FREEZER, COOLER & STORAGE
ADDITION

PROJECT NUMBER: 03-18-10371

Loves
Travel Stop &
Country Stores

STATE OF ARKANSAS
HARRISON FRENCH & ASSOCIATES, LTD.
No. C03060

STATE OF ARKANSAS
JOHN KENNETH RILEY
No. 38083

JAN 02 2020

ISSUE BLOCK

STORE NO.	371
DOCUMENT DATE	01.03.20
CHECKED BY:	JKR
DRAWN BY:	JSB
PROTO CYCLE:	

MECHANICAL FLOOR PLANS

SHEET:
M2.3