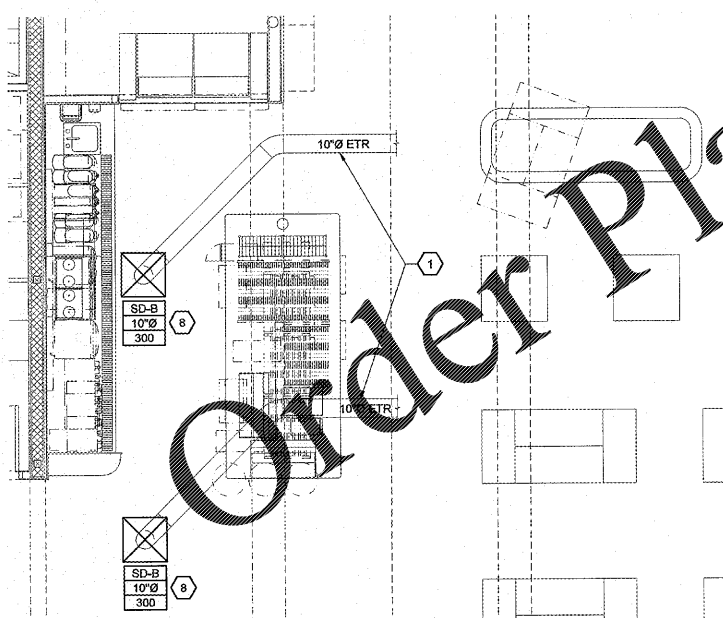
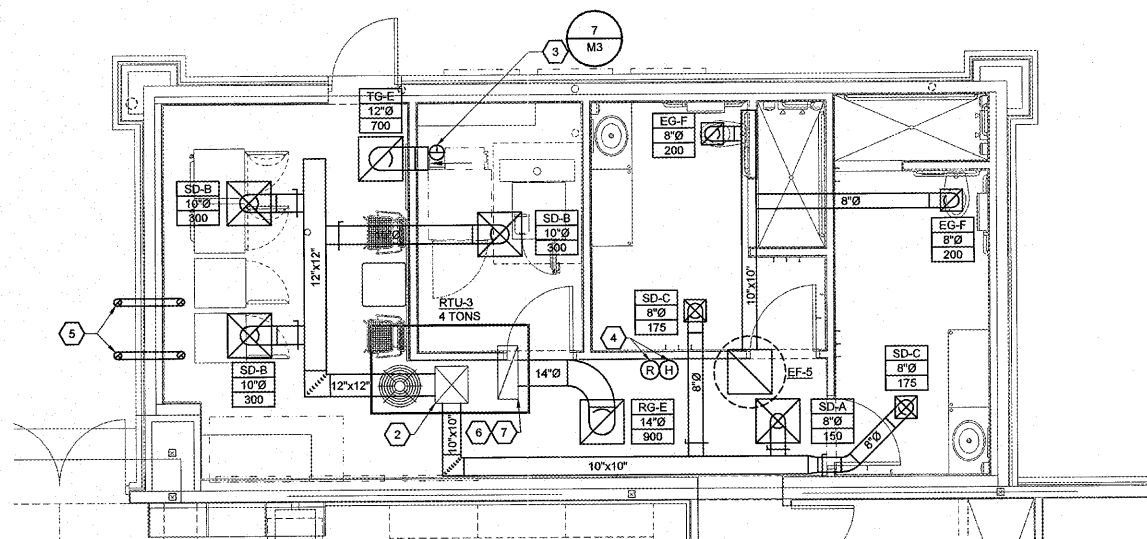


**3 KEY PLAN**  
SCALE: 1/16"=1'-0"



**2 DRINK CENTER HVAC PLAN**  
SCALE: 1/4"=1'-0"



**1 SHOWER/LAUNDRY ADDITION HVAC PLAN**  
SCALE: 1/4"=1'-0"

MECHANICAL SYMBOLS	
	RECTANGULAR DUCT 18" WIDE BY 12" DEEP
	12" DIAMETER ROUND DUCT
	SUPPLY DUCT IN SECTION
	RETURN OR EXHAUST DUCT IN SECTION
	ELBOW WITH TURNING VANES
	ROUND (OR OVAL) ELBOW
	SUPPLY AIR DIFFUSER WITH ROUND SUPPLY DUCT
	RETURN OR EXHAUST AIR DIFFUSER WITH ROUND DUCT
	DIFFUSER OR GRILLE TYPE BRANCH DUCT & NECK SIZE CFM
	MANUAL BALANCE DAMPER
	CONNECT TO EXISTING
	EXISTING TO REMAIN
	FIR DAMPER

- GENERAL NOTES**
- ALL MECHANICAL HVAC AND PLUMBING WORK SHALL BE PERFORMED IN STRICT ACCORDANCE WITH THE BASE BUILDING SPECIFICATION AND WITH THE LATEST EDITION OF THE PREVAILING STATE MECHANICAL, PLUMBING AND BUILDING CODES AS WELL AS ALL REGULATIONS THAT MAY APPLY. IN CASE OF CONFLICT BETWEEN THE CONTRACT DOCUMENTS AND A GOVERNING CODE OR ORDINANCE THE MORE STRINGENT STANDARD SHALL APPLY.
  - COORDINATE EXACT LOCATIONS OF AIR DISTRIBUTION DEVICES WITH CEILING AND LIGHT FIXTURE LAYOUT - VERIFY WITH THE ARCHITECT.
  - ALL RECTANGULAR SUPPLY DUCTS ELBOWS SHALL HAVE SINGLE THICKNESS TURNING VANES.
  - ALL AIR CONDITIONING DUCTWORK SHALL BE SMACNA 1" PRESSURE CLASSIFICATION WITH SEAL CLASS 'A'.
  - DUCT SIZES SHOWN ARE ACTUAL INSIDE CLEAR DIMENSIONS. SHEET METAL CONTRACTORS SHALL INCREASE SIZES FOR DUCTWORK REQUIRED TO BE LINED TO ALLOW FOR 1/4" THICK LINER EQUIVALENT TO KNAUF CEILING (MINIMUM R-VALUE 4.5).
  - COORDINATE ROUTING OF DUCTWORK WITHIN STRUCTURE WITH THE LOCATION OF COLUMNS, JOIST AND BEAM.
  - ALL ROUND AIR CONDITIONING DUCTWORK SHALL HAVE 2-INCH THICK EXTERIOR DUCT WRAP CONSISTING OF A FIBERGLASS BLANKET WITH FACTORY APPLIED VAPOR BARRIER FACING AND HAVING A MINIMUM R-VALUE OF 5.8, UNLESS NOTED OTHERWISE.
  - IT IS THE INTENT TO HAVE ALL AIR SYSTEMS INCLUDING KITCHEN EXHAUST AND MAKE-UP AIR BALANCED BY AN INDEPENDENT TAB CERTIFIED NEBB CONTRACTOR. AIR QUANTITIES IN MAIN DUCT SHALL BE MEASURED BY PITOT TUBE TRAVERSES. OUTLET AND INLET AIR QUANTITIES SHALL BE DETERMINED IN ACCORDANCE WITH NEBB PROCEDURES. THE NEBB TAB FIRM SHALL PROVIDE A CERTIFICATE OF CONFORMANCE CERTIFICATION TO THE OWNER.
  - UNLESS DIMENSIONED, THE WORK SHOWN ON THE CONTRACT DRAWINGS IS DIAGRAMMATIC, ILLUSTRATING THE GENERAL ARRANGEMENT. CONTRACTOR SHALL ADHERE TO ARRANGEMENT SHOWN AS CLOSELY AS THE ACTUAL CONSTRUCTION WILL PERMIT.
  - CONTRACTOR SHALL VERIFY EXACT EQUIPMENT DIMENSIONS, CLEARANCES, AND FIELD DIMENSIONS RELATIVE TO LOCATIONS OF STRUCTURAL FRAMING. CHANGES REQUIRED IN ROUTING OR SIZES OF DUCTWORK TO MAKE WORK SHOWN CONFORM TO PROJECT REQUIREMENTS RESULTING FROM FIELD COORDINATION PROBLEMS SHALL BE IDENTIFIED, ILLUSTRATED, AND SUBMITTED TO THE ENGINEER FOR PRIOR REVIEW AND APPROVAL BEFORE INSTALLATION.

- KEYNOTES**
- EXISTING DUCTWORK AND ASSOCIATED DUCTWORK ACCESSORIES TO REMAIN UNLESS SHOWN OTHERWISE FIELD VERIFY EXACT LOCATION.
  - TRANSITION IN VERTICAL FROM RTU S/A AND R/A OPENINGS TO DUCT SIZES LISTED.
  - 8" DIAMETER RIGID, METAL DRYER VENT TO EXHAUST ON ROOF. TERMINATE WITH GOOSENECK A MINIMUM OF 36" ABOVE ROOF SURFACE. ALL ELBOWS USED FOR DRYER EXHAUST SHALL HAVE A 1.5 MINIMUM RADIUS. PROVIDE AN 8X4" ACCESS PANEL EQUAL TO DUCTMATE SANDWICH ACCESS DOOR - HI - TEMP - FOR CLEANING AT THE BASE OF EACH VERTICAL RISER IN ACCORDANCE WITH IMC SECTION 504.
  - REMOTE TEMPERATURE AND HUMIDITY SENSORS WALL MOUNTED AT 54" AFF IN LOCATION SHOWN.
  - (2) 4" METAL DRYER EXHAUST STRAIGHT OUT TO EXTERIOR WALL. DRYER EXHAUST DUCT SHALL HAVE 45 DEGREE VERTICAL OFFSET TO PENETRATE WALL AT 18" AFF. TERMINATE WITH WALL CAP EAL-01.
  - REMOTE TEMPERATURE CONTROLLER TO BE LOCATED IN OBSERVATION ROOM ABOVE DOOR AT 80" AFF. COORDINATE FINAL LOCATION WITH LOVE'S CONSTRUCTION MANAGER.
  - MOUNT REMOTE ANNUNCIATOR AT FUEL DESK AT 66" AFF. COORDINATE FINAL LOCATION WITH LOVE'S CONSTRUCTION MANAGER.
  - REPLACE SUPPLY AIR GRILLES. CONNECT TO EXISTING DUCTWORK IF POSSIBLE.

EXISTING CONDITIONS WERE TAKEN FROM ORIGINAL DRAWINGS AND MAY NOT REFLECT EXACT "AS-BUILT" CONDITIONS. CONTRACTOR SHALL FIELD VERIFY ALL EXISTING CONDITIONS PRIOR TO SUBMITTING FINAL BIDS. CONTRACTOR SHALL CAREFULLY COORDINATE NEW WORK AND DEMOLITION WITH ALL OTHER DISCIPLINES AND EXISTING CONDITIONS.

EACH SUBCONTRACTOR IS RESPONSIBLE FOR HAVING A THOROUGH KNOWLEDGE OF ALL DRAWINGS AND SPECIFICATIONS IN THEIR RELATED FIELD. THE FAILURE TO ACQUAINT HIMSELF WITH THIS KNOWLEDGE DOES NOT RELIEVE THE RESPONSIBILITY OF PERFORMING HIS WORK PROPERLY. NO ADDITIONAL COMPENSATION SHALL BE ALLOWED BECAUSE OF CONDITIONS THAT OCCUR DUE TO FAILURE TO FAMILIARIZE WORKERS WITH THIS KNOWLEDGE.

**HFA**  
CREATIVE SOLUTIONS  
MEANINGFUL PLACES

**HARRISON FRENCH & ASSOCIATES**  
ARCHITECTS & ENGINEERS

1705 S. WALTON BLVD., SUITE 3  
BENTONVILLE, ARKANSAS 72712  
t 479.273.7780  
f 888.520.9685  
www.hfa-ae.com

STIPULATION FOR REUSE

THIS DRAWING HAS BEEN PREPARED BY THE ARCHITECT OR ENGINEER AND IS THE PROPERTY OF HARRISON FRENCH & ASSOCIATES, LTD. IT IS TO BE USED ONLY FOR THE PROJECT AND SITE SPECIFICALLY IDENTIFIED HEREON. IT IS NOT TO BE REPRODUCED, COPIED, REPRINTED, OR TRANSMITTED IN ANY FORM OR BY ANY MEANS, WITHOUT THE WRITTEN PERMISSION OF HARRISON FRENCH & ASSOCIATES, LTD.

1911 HWY 34 W  
DILLON, SC 29536

FRESH KITCHEN LITE REMODEL  
SHOWER & LAUNDRY ADDITION  
FREEZER, COOLER & STORAGE  
ADDITION

PROJECT NUMBER: 03-18-10371

**Love's**  
Travel Stop &  
Country Stores

HARRISON FRENCH & ASSOCIATES, LTD.  
No. C03030

STATE OF ARKANSAS  
Professional Engineer  
No. 39068

JOHN KENNETH RILEY

JAN 02 2020

ISSUE BLOCK


STORE NO. 371  
DOCUMENT DATE: 01/03/20  
CHECKED BY: JKR  
DRAWN BY: JSB  
PROTO CYCLE:

MECHANICAL FLOOR PLANS

SHEET:  
**M2.2**

L:\3000-18-10371\Drawings - Dillon, SC\31\CONDOCS\MEP\310 M2.2 371.dwg  
 1/3/2020 11:44:00am User: jkr  
 L:\3000-18-10371\Drawings - Dillon, SC\31\CONDOCS\MEP\310 M2.2 371.dwg