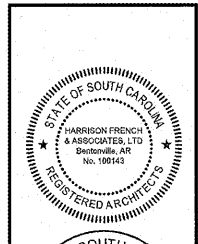


STIPULATION FOR REUSE
 THIS DRAWING HAS BEEN PREPARED FOR THE
 CONTRACTOR'S USE ONLY. IT IS THE CONTRACTOR'S
 RESPONSIBILITY TO VERIFY ALL INFORMATION
 CONTAINED HEREIN IS ACCURATE AND COMPLETE.
 THE CONTRACTOR SHALL BE RESPONSIBLE FOR
 OBTAINING ALL NECESSARY PERMITS AND
 APPROVALS FROM THE APPROPRIATE
 AUTHORITIES. THE CONTRACTOR SHALL BE
 RESPONSIBLE FOR OBTAINING ALL NECESSARY
 INFORMATION FROM THE CONTRACT DOCUMENTS.
 CONTRACT NO. 19-1037

1911 HWY 34 W
 DILLON, SC 29536
 FRESH KITCHEN LITE REMODEL
 SHOWER & LAUNDRY ADDITION
 FREEZER, COOLER & STORAGE
 ADDITION
 PROJECT NUMBER: 03-18-1037

Loves
 Travel Stop &
 Country Stores



ISSUE BLOCK

STORE NO. 371
 DOCUMENT DATE: 01/03/20
 CHECKED BY: JMF/RAF
 DRAWN BY: NJME
 PROTO CYCLE:

SCHEDULES & DETAILS

SHEET: **A2.1**

INTERIOR FINISHES XX

	NO.	TYPE	DESCRIPTION	REMARKS
FLOORS	1	PORCELAIN	"DAL TILE" PORTFOLIO, PF08 CHOCOLATE- 12x24 F-113-90 DRY SET MORTAR METHOD, "HYDROMENT" NATURAL FLOOR GROUT, WITH HYDROMENT ACRYLIC MORTAR ADMIXTURE. PROVIDE "HYDROMENT" ULTRASET @ SLAB JOINTS PER DETAIL 3/A2.1	12x24 - PATTERN - RUNNING BOND - TYPICAL (OVERLAP SHOULD NOT EXCEED 33%) "MAPEI" - #04 "BAHAMA BEIGE" GROUT
	2	PORCELAIN	"DAL TILE" PORTFOLIO PF08 "CHOCOLATE"	2"x2" MOSAIC IN SHOWER STALL ONLY; GROUT: MAPEI - "BAHAMA BEIGE" #04 REF: 3/A2.1 FOR EXPANSION JOINTS
	3	SURE TREAD	"DAL TILE" RED SURETREAD Q81, 6x8, BLACK GROUT	REF: 3/A2.1 FOR EXPANSION JOINTS
	6	EPOXY	SIKADUR 55 SLV	-
SHOWER STALL FLOOR	8	PORCELAIN	"DAL TILE" KEYSTONES - MOTTLED MEDIUM BROWN D050 - "MAPEI" - CHARCOAL #47 GROUT	2x2 MOSAIC IN SHOWER STALL FLOOR
BASE	11	RUBBER	"ROPPE" BLACK - (4")	MATCH EXISTING
	12	COVE BASE	"DAL TILE" COVE BASE P-3085, MATCH RED SURE TREAD	MATCH EXISTING
INT WALLS	13	FRP	"MARLITE", P151 LIGHT GREY, 1/8" FIBERGLASS REINFORCED PANELS, BATTEN JOINTS.	DO NOT PAINT WALL BEHIND FRP
	15	TRIM	EQ. TO NO. 7 BULLNOSE TRIM	SHOWER STALL COVER TRIM
	18	TRIM	"SCHULTER" TRIM - DILEX - AHK - AE - SATIN ANODIZED ALUMINUM	MATCHING CORNER, END PIECES AND ACCESSORIES TO MAKE COMPLETE SYSTEM. MATCH EXISTING
	19	TRIM	"SCHULTER" TRIM - RONDEC - R0100 AE - ANODIZED ALUMINUM, SATIN/MATT	MATCHING CORNER, END PIECES AND ACCESSORIES TO MAKE COMPLETE SYSTEM. MATCH EXISTING
	22	PLAS. LAM.	"WILSONART" #D50-6 KAHKI BROWN, WALL PANEL SYSTEM.	BY MILL. CTR.
	30	PORCELAIN	30A - "DAL TILE" CONTEMPORARY TIMBER GLEN, ESPRESSO P624 - 6x24 - 30% 30D - "DAL TILE" CONTEMPORARY TIMBER GLEN, DUNE P820 - 6x24 - 30% 30B - "DAL TILE" CONTEMPORARY TIMBER GLEN, CHERRY P621 - 6x24 - 30% 30C - "DAL TILE" CONTEMPORARY TIMBER GLEN, HICKORY P621 - 6x24 - 30%	COFFEE BAR BACKSPLASH "MAPEI" - BAHAMA BEIGE #04 GROUT PATTERN IS 8" STAGGER RANDOM COLOR LAYOUT PER PERCENTAGE LISTED
	45	SOLIDSURF	"CORIAN" OAT	COFFEE DRINK BAR/ ISLAND COUNTERTOPS BY MILLWORK CONTRACTOR
	50	PLAS. LAM.	"FORMICA" WENGE STAIN #83005 - RUN GRAIN HORIZONTAL	BY MILLWORK CONTRACTOR. RUN GRAIN HORIZONTAL COFFEE DRINK BAR AND ISLAND FRONT FACES ALMOND MELAMINE INTERIORS
	51	PLAS. LAM.	FORMICA "FORMAL" TWILL #26-58	SUPPLIED BY MILLWORK CONTRACTOR; INSTALLED BY GENERAL CONTRACTOR; WOOD TOP TRIM, MATCHING CORNER, END PIECES AND ACCESSORIES TO MAKE COMPLETE SYSTEM. INSTALLERS SHALL USE APPROVED ADHESIVE - "TITEBOND" GREENCHOICE ADVANCED POLYMER PANEL ADHESIVE. DO NOT PAINT WALL BEHIND LAMINATE.
	52	PAINT	SHERWIN WILLIAMS SW 9168 "ELEPHANT EAR" - SATIN OR PPG CUSTOM COLOR MATCH TO SW 9168	-
MILLWORK	60	LAMINATE	"WILSONART" # 4879-38 STEEL MESH	SHOWER VANITY BY MILLWORK CONTRACTOR
CEILING	71	SUSP. AC.	"ARMSTRONG" FISSURED MINABOARD #755B, 24"x48", WHITE GRID	MATCH EXISTING
	84	SUSP. VINYL	"ARMSTRONG" CLEAN ROOM #870, 24"x24"x5/8" OR, WHITE VINYL COVERERS 5/8" GYP. BD. ON WHITE GRID.	MATCH EXISTING
	85	PAINT	SHERWIN WILLIAMS "CEILING BRIGHT WHITE" OR PPG1011-1 "PACIFIC PEARL"	SHOWER CEILING
	86	PAINT	SHERWIN WILLIAMS SW 7567 "NATURAL TAN" LATEX OR PPG1075-3 "CASUAL ELEGANCE"	-
DOORS	70	PLAS. LAM.	WILSONART "EBONY RECON" 7997-38	RUN WOOD GRAIN VERTICALLY; PROVIDED AND INSTALLED BY GENERAL CONTRACTOR. DO NOT PAINT DOOR BEHIND LAMINATE.
MILLWORK	71	SOLID SURFACE	DUPONT - CORIAN - CONCRETE	PROVIDED BY MILLWORK CONTRACTOR AND INSTALLED BY GENERAL CONTRACTOR; CUSTOMER LAUNDRY
	72	CERAMIC	ROCA TILE COLOR COLLECTION, "TAUPE" BRIGHT U789	6x18 SIZE TILE. GROUT: MAPEI #02 "PEWTER"; REF: 2/A1.1
INT WALLS	73	PORCELAIN	"FLORIM" LAYERS, "SEDIMENT" 1094423	ACCENT - 12x24 SIZE TILE. GROUT: MAPEI #27 "SILVER" GROUT; PER INTERIOR SHOWER ELEVATIONS.
	74	CERAMIC	6 x 18 "ROCA TILE" COLOR COLLECTION, "TENDER GRAY" BRIGHT U781	6x18 SIZE TILE. GROUT: MAPEI #90 "ALABASTER" GROUT; PER INTERIOR SHOWER ELEVATIONS & SHOWER STALL CEILING PLAN.
	75	SOLID SURFACE	DUPONT - CORIAN - LAVA ROCK	PROVIDED BY MILLWORK CONTRACTOR AND INSTALLED BY GENERAL CONTRACTOR; SHOWER VANITIES, SPLASH, AND BENCH TOPS.

EXTERIOR FINISH & MATERIAL SCHEDULE XX

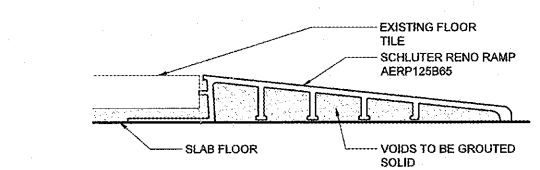
	NO.	TYPE	DESCRIPTION	REMARKS
EXTERIOR WALLS	80	BRICK	ACME BLEND 137 KING SIZE "BURGUNDY"	REF: A6 FOR EXTERIOR ELEVATIONS FIELD VERIFY. MATCH EXISTING
	81	BRICK	ACME PEP BLEND 30 VELOUR KING SIZE "DOVE GREY"	REF: A6 FOR EXTERIOR ELEVATIONS FIELD VERIFY. MATCH EXISTING
	82	EIFS	DRYVIT "BUCKSKIN" #449, SAND PEBBLE TEXTURE	REF: A6 FOR EXTERIOR ELEVATIONS FIELD VERIFY. MATCH EXISTING
	83	CAST STONE	CALLAS CAST STONE, COLOR NO 9. 214-428-6289	REF: A6 FOR EXTERIOR ELEVATIONS FIELD VERIFY. MATCH EXISTING
	84	PAINT	PRIMER: SHERWIN WILLIAMS CO. GALVITE B 50 W 3 PRIMER AT 2 MILS DFT PER COAT FINISH: SHERWIN WILLIAMS CO. INDUSTRIAL ENAMEL B 54 SERIES. (LOW VOC COMPLIAN). APPLY 2 COATS 2 TO 3 MILS DRY PER COAT PAINT TO MATCH EXISTING	REF: A6 FOR EXTERIOR ELEVATIONS FIELD VERIFY. MATCH EXISTING

SIGN SCHEDULE X

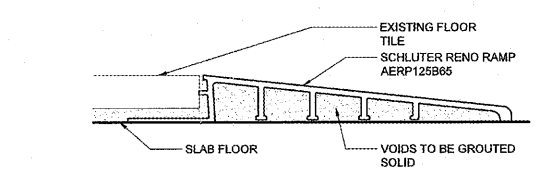
SIGN #	DESCRIPTION	QT	TYPE	COLOR	PROVIDER & INSTALL	REMARK
A	SHOWER DOOR NUMBER	2	VINYL	BLACK	OP/CI	W/ BRAILLE. MOUNT ADJ. TO DOOR. BOTTOM OF SIGN SHOULD BE 48"-60" A.F.F.
H	EMERGENCY EXIT STICKER	2	VINYL	BLACK	OP/CI	-
J	ALARM WILL SOUND	2	VINYL	BLACK	OP/CI	W/ BRAILLE. MOUNT ADJ. TO DOOR. BOTTOM OF SIGN SHOULD BE 48"-60" A.F.F.



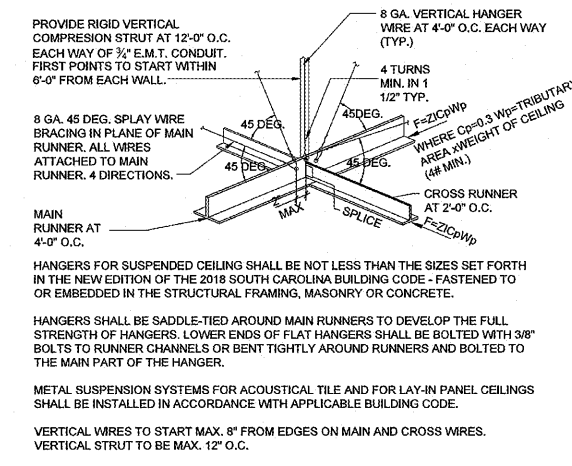
1 THRESHOLD DETAIL
 SCALE: 3" = 1'-0"



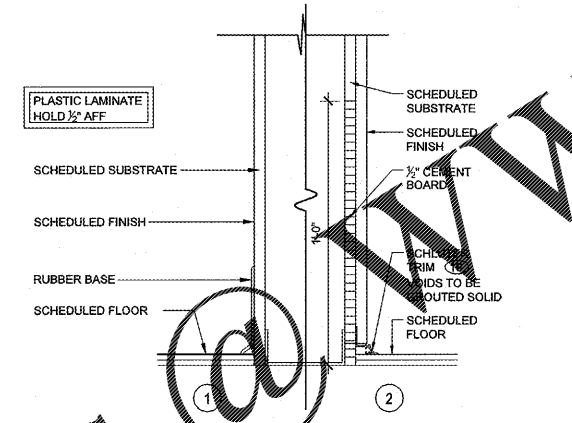
2 TILE TRANSITION DETAIL
 SCALE: 12" = 1'-0"



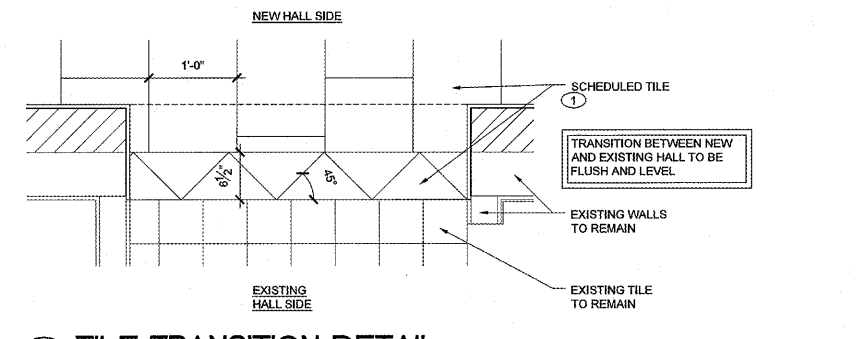
3 TILE EXPANSION DETAIL
 SCALE: 1 1/2" = 1'-0"



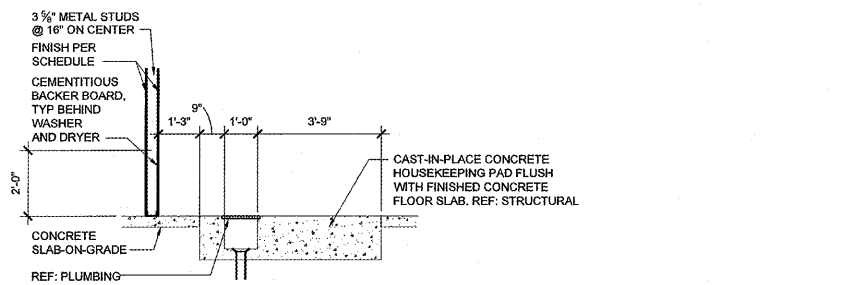
7 CEILING BRACING DETAIL
 SCALE: N.T.S.



8 BASE DETAIL
 SCALE: 3" = 1'-0"



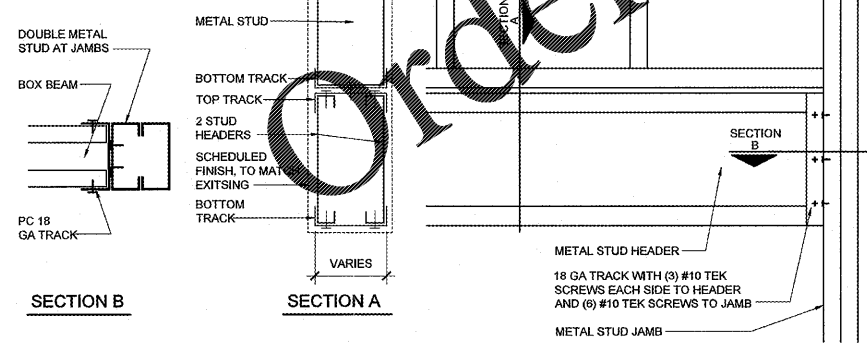
8 TILE TRANSITION DETAIL
 SCALE: 1" = 1'-0"



6 SECTION AT HOUSEKEEPING PAD
 SCALE: 3/8" = 1'-0"

INTERIOR NON-LOAD BEARING PARTITION HEADER SCHEDULE

HEADER LENGTH	HEADER MEMBERS	MINIMUM EFFECTIVE PROPERTIES PER STUD
2' TO 6'	(2) 6" x 18 GAUGE	I _x = 2.042, S _x = 0.670



4 HEADER CONNECTION DETAIL
 SCALE: 1 1/2" = 1'-0"

Jun02,2020-C24km - User: nrbh.eggs
 L:\0309-18-1037-Loves-Dillon, SC\21\CONDOCS\Architectural\29-A2.1 SCHEDULES & DETAILS.dwg