

Order Plans

ABBR	SYMBOL	DESCRIPTION
ACC		AIR COOLED CONDENSER
A/C		ABOVE CEILING
AD		ACCESS DOOR
ADJ		ADJUSTABLE
AF		ABOVE FINISHED FLOOR
AHU		AIR HANDLING UNIT
AUTO		AUTOMATIC
BAL		BALANCING
BBS		BASE BOARD HEAT
B/C		BASE CLEANOUT
BDD		BACKDRAWT DAMPER
BFLY		BUTTERFLY
B/F		BELOW FLOOR
B/G		BELOW GRADE
BH		BASIN HEATER
BHP		BRAKE HORSEPOWER
B		BOLER
BP		BOLER PUMP
CD		CEILING SUPPLY AIR DIFFUSER
CR		CEILING RETURN AIR REGISTER / GRILLE OR DOOR / REGISTER / GRILLE
CM		CUBIC FEET PER MINUTE
CON		CONCENTRIC
CS		CONNECT TO EXISTING
DB		DEGBELS
DIR		DIRECTION OF AIRFLOW
DN		DOWN
DR		DRAIN
D/S		DUCTLESS SPLIT SYSTEM
DUG		DRAINING
DU		DUCT SIZE TRANSITION - SINGLE LINE DUCT
DU-N		DUCTWORK - NEW
DU-E		DUCTWORK - EXISTING OR DIFFUSER TO REMAIN
DU-U		DUCT - SUPPLY OR OUTSIDE AIR UP
DU-D		DUCT - RETURN OR EXHAUST UP
DU-DN		DUCT - SUPPLY OR OUTSIDE AIR DOWN
DU-DN		DUCT - RETURN OR EXHAUST DOWN
DU-T		DUCT TRANSITION - SQUARE-TO-ROUND (OR OVAL)
DU-S		DUCT MOUNTED SMOKE DETECTOR (WIRED BY DIV. 16)
EACH		EACH
EAT		ENTERING AIR TEMPERATURE
ECC		ECCENTRIC
EGH		ELECTRIC CEILING HEATER
EDH		ELECTRIC DUCT HEATER
EF		EXHAUST FAN
EFF		EFFICIENCY
ESP		EXTERNAL STATIC PRESSURE
ET		EXPANSION TANK
EWH		ELECTRIC UNIT HEATER
EWH		ELECTRIC WALL HEATER
EWT		ENTERING WATER TEMPERATURE
EWH		EXHAUST
F		FAHRENHEIT
FCU		FAN COOL UNIT
FD		FIRE DAMPER
FLR		FLOOR
HPQ		HEAT PUMP
HP		HORSEPOWER
HTG		HEATING
HX		HEAT EXCHANGER
HZ		HERTZ
HDBSTAT		HUMIDISTAT
ID		INCH DIMENSION
IN		INCHES
KVA		KILOVATTS
KVA		KILO VOLT AMPS
LAT		LEAVING AIR TEMPERATURE
LB		POUNDS
LTD		LIMITS OF DEVOLITION

ABBR	SYMBOL	DESCRIPTION
FOT		FLOOT ON TOP
FM		FEET PER MINUTE
FPS		FEET PER SECOND
FSD		FIRE AND SMOKE DAMPER
FT		FEET
GA		GAUGE
GPM		GALLONS PER MINUTE
MAX		MAXIMUM
MD		MANUAL DAMPER
MFR		MANUFACTURER
MN		MINIMUM
MOP		MOTOR OPERATED DAMPER
MVD		MANUAL VOLUME DAMPER
NC		NORMALLY CLOSED
NO		NORMALLY OPENED
NOM		NOMINAL
OA		OUTSIDE AIR
OBD		OPPOSED BLADE DAMPER
OD		OUTSIDE DIMENSION
OU		POWERED INDUCTION UNIT
PRV		PRESSURE REDUCING VALVE
PSI		POUNDS PER SQUARE INCH
PTAC		PACKAGED TERMINAL AIR CONDITIONER
RA		RETURN AIR
RAG		RETURN AIR GRILLE
RAT		RETURN AIR TRANSFER
RED		REDUCER
RL		REFRIGERANT LIQUID
RS		REFRIGERANT SUCTION
RS		REFRIGERANT SUCTION AND DISCHARGE TUBING (WOULDED TOGETHER)
RTU		ROOFTOP UNIT
SA		SUPPLY AIR
SD		SMOKE DAMPER
SEN		SENSIBLE
SF		SQUARE FEET
SF		SUPPLY FAN
SP		STATIC PRESSURE
SPS		STATIC PRESSURE SENSOR
SQ		SQUARE
SR		SUPPLY REGISTER
SR		SIDEWALL OR DUCT MOUNTED RETURN OR EXHAUST AIR REGISTER / GRILLE
TEMP		TEMPERATURE
TEMP		TEMPERATURE SENSOR
TG		TRANSFER GRILLE
TH		THERMOSTAT
TYP		TYPICAL
UNO		UNLESS NOTED OTHERWISE
VA		VALVE
VTR		VENT THRU ROOF

ABBR	SYMBOL	DESCRIPTION
A		AMPS
FLA		FULL LOAD AMPS
HZ		HERTZ
KVA		KILOVOLT
KVA		KILOWATT
MC		MINIMUM CIRCUIT AMPERES
MOPP		MAXIMUM OVERCURRENT PROTECTION
PH		PHASE
V		VOLTS

DESIGN CONDITIONS	
COOLING - SUMMER DESIGN	
OUTDOOR DESIGN DB / CONCURRENT WB (ASHRAE 6.4)	93.9 °F / 74.8 °F
LIGHTING LOAD ALLOWANCE	1.0 W/SF
INDOOR DESIGN DB	75 °F / 50%
HEATING - WINTER DESIGN	
OUTDOOR DESIGN DB (ASHRAE 9.6)	18 °F
INDOOR DESIGN DB (OTHER)	70 °F

ID TAG	ASSOCIATED CONDENSING UNIT	TYPE	SUPPLY CFM	OUTSIDE AIR CFM	CAPACITY TOTAL COOLING (MBH)	ELECTRICAL DATA		BASE OF DESIGN	NOTES
						VOLTS/PH	MCA		
AHU-200-1	DCU-1	2XG	400	25	18	200/1	---	DAIKIN FFG	1 2 3 4 5 6 1 8 9
AHU-200-2	DCU-1	2XG	400	25	18	200/1	---	DAIKIN FFG	1 2 3 4 5 6 1 8 9
AHU-300-1	DCU-2	2XG	400	25	18	200/1	---	DAIKIN FFG	1 2 3 4 5 6 1 8 9
AHU-300-3	DCU-2	2XG	400	25	18	200/1	---	DAIKIN FFG	1 2 3 4 5 6 1 8 9

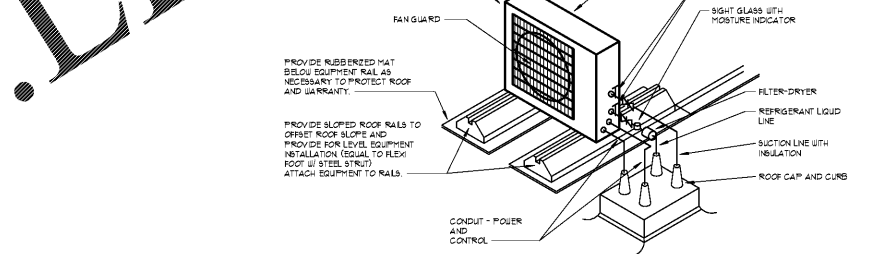
NOTES:
 1: UNITS SHALL BE CAPABLE OF PROVIDING MINIMUM SCHEDULED CAPACITIES BASED ON DERATED LINE SET LENGTH.
 2: DISCONNECT PROVIDED BY ELECTRICAL CONTRACTOR.
 3: PROVIDE INTEGRAL CONDENSATE PUMP KIT.
 4: PROVIDE WITH FACTORY WALL MOUNTED WIRED THERMOSTAT.
 5: UNIT CAPACITIES BASED ON 15°F SAT TEMPERATURE.
 6: PROVIDE WITH CEILING TRIM KIT.
 7: PROVIDE INTERFACE CARD TO TIE INTO EXISTING BAS.
 8: PROVIDE ACCESSORIES TO ALLOW UNIT COOLING OPERATION DOWN TO 14°F AMBIENT & HEATING OPERATION DOWN TO 5°F AMBIENT.
 9: INDOOR UNIT POWERED BY OUTDOOR UNIT THROUGH ELECTRICAL CONTRACTOR PROVIDED INTERCONNECTED WIRING.

TAG	COOLING CAPACITY			HEATING CAPACITY			ELECTRICAL			BASE OF DESIGN	NOTES
	TONS (NOMINAL)	TOTAL (MBH)	SENB (MBH)	EER	TOTAL MBH	COP	VOLTS/PH	MCA	MCOEF		
DCU-1	3	36.0	---	9.2	36.0	3.89	200/1	23.9	25	DAIKIN 4MXS	1 2 3
DCU-2	3	36.0	---	9.2	36.0	3.89	200/1	23.9	25	DAIKIN 4MXS	1 2 3

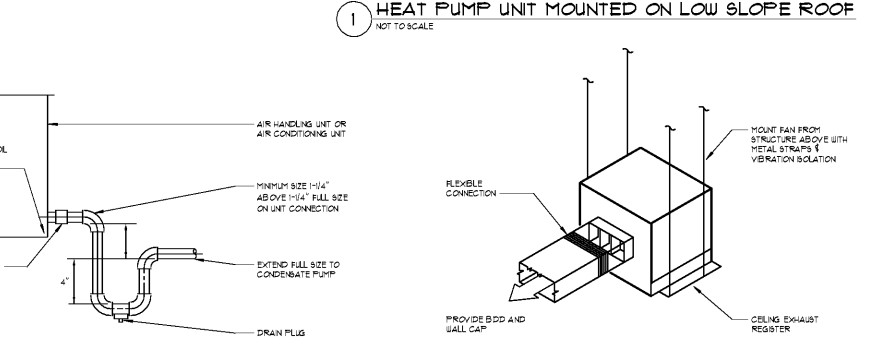
NOTES:
 1: SECURE CONDENSING UNITS TO EQUIPMENT RAILS ON ROOF.
 2: DISCONNECT SWITCH PROVIDED AND INSTALLED BY ELECTRICAL CONTRACTOR.
 3: CONTRACTOR/UNIT MANUFACTURER IS RESPONSIBLE FOR SIZING REFRIGERANT PIPING. SIZING REQUIRED BY LOCALITIES (TRANS, ETC.)

TAG	LOCATION	CAPACITY (CFM)	SIZE (IN)	MOTOR	DRIVE	SPLIT PHASE	MAX SONES	TYPE OF FAN	BASE OF DESIGN	NOTES
EP-200H	LEVEL 300 RR	50	6.5	DIRECT	1	183	3	CABINET EXHAUST FAN	GREENHECK SPA	1 2 3 4

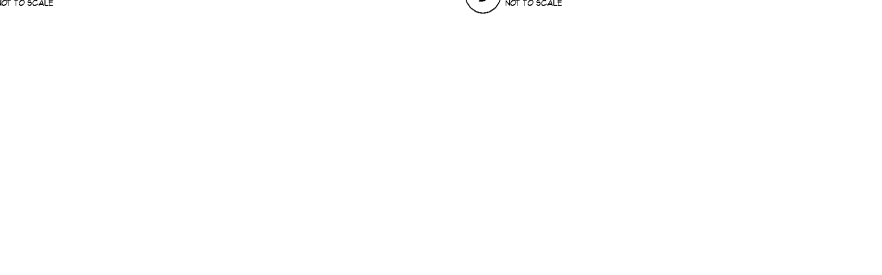
NOTES:
 1: DISCONNECT PROVIDED BY ELECTRICAL CONTRACTOR.
 2: STARTER PROVIDED BY ELECTRICAL CONTRACTOR.
 3: PROVIDE UPS BACKUP DAMPER.
 4: FAN TO BE CONTROLLED BY LIGHT SWITCH PROVIDED BY ELECTRICAL CONTRACTOR.



1 HEAT PUMP UNIT MOUNTED ON LOW SLOPE ROOF
NOT TO SCALE



2 CEILING EXHAUST FAN DETAIL
NOT TO SCALE



3 CONDENSATE DRAIN DETAIL
NOT TO SCALE



102 May Alco Park Road, Suite 103
Cumming, GA 30040



PRESS BOX EXPANSION
 RIVERSIDE MILITARY ACADEMY
 2001 RIVERSIDE DR
 GAINESVILLE, GA 30601

PRINT RECORD		
No.	DATE	DESCRIPTION
	12/20/2019	BID & PERMIT SET

Drawn By: KO
 Checked By: KB
 Date: 12/20/2019
 Job No.: 19046

Sheet Title
 LEGEND, SCHEDULES, & DETAILS - HVAC

Sheet No.
M-0.1
 RELEASED FOR CONSTRUCTION