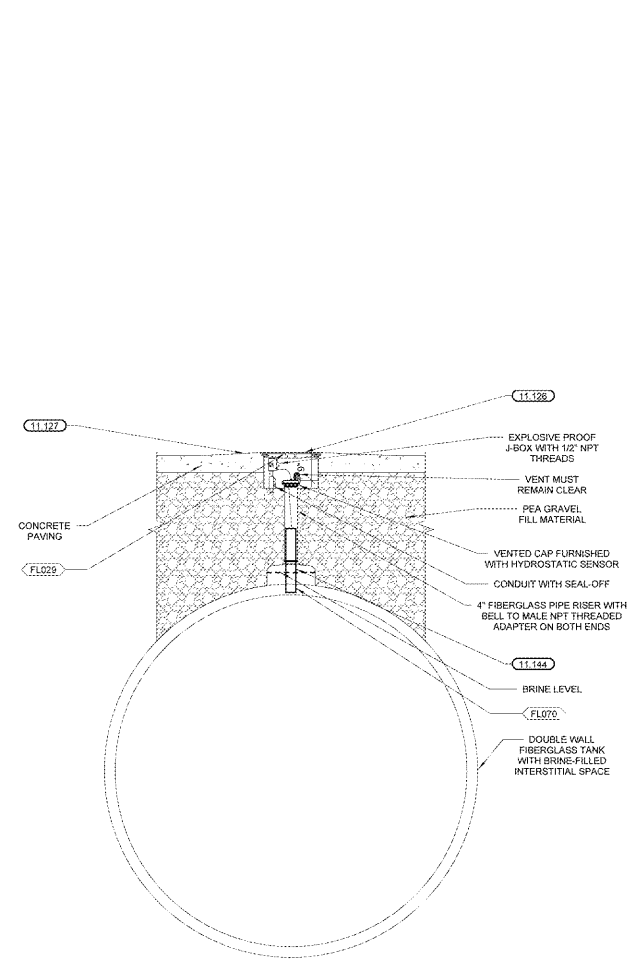


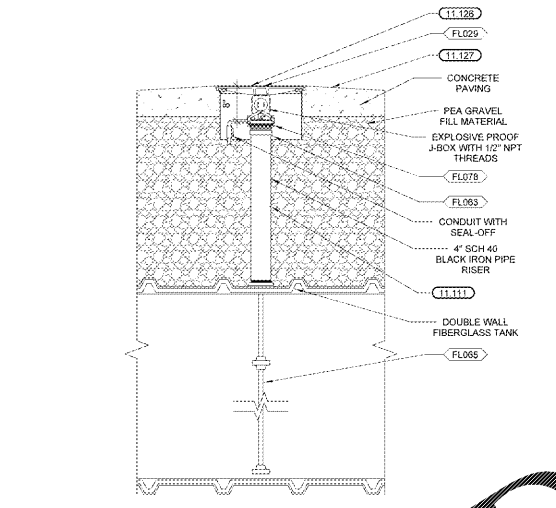
MANHOLE COVER PAINT SCHEDULE	
RED	SUPER UNLEADED PRODUCT FILL
WHITE	UNLEADED PRODUCT FILL
ORANGE	VAPOR RECOVERY
YELLOW	DIESEL PRODUCT FILL
BLACK	TANK PROBE, DIESEL VENT CONNECTION (TOP AND BOTTOM SIDE)

NOTE: PAINT COLOR TO MATCH PRODUCT MARKER TAG OF EACH PRODUCT

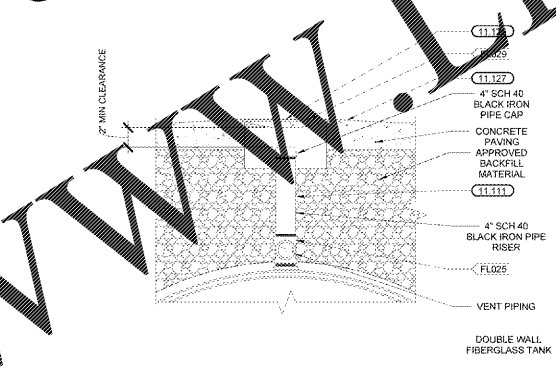
KEYNOTES	
11.109	OVERFILL PREVENTION VALVE INSTALLED PER MANUFACTURER'S SPECIFICATIONS. SET OVERFILL DEVICE FOR RESTRICTION OF FLOW AT OR BELOW 90% TANK CAPACITY AND POSITIVE SHUT-OFF AT 83% TANK CAPACITY TO MEET NFPA 30 REQUIREMENTS
11.110	EMERGENCY NAMEPLATE HOLDER WITH TANK SIZE IN GALLONS
11.111	ALL UNDERGROUND STEEL PIPE AND FITTINGS SHALL BE WRAPPED UP TO A POINT SIX (6) INCHES ABOVE GRADE IN THE FOLLOWING MANNER: APPLY SCOTCHWRAP PIPE INSULATION PUTTY AT ALL HIGH-IRREGULAR SURFACES SUCH AS FITTINGS SO AS TO PROVIDE A UNIFORM SURFACE FOR THE PRIME COAT TAPE WRAP. APPLY SCOTCHWRAP PIPE PRIMER AT AN AVERAGE RATE OF 350 SQ. FT. PER GALLON. APPLY SCOTCHWRAP #51 TAPE (20 MILS) WITH WIDTH AND OVERLAP AS FOLLOWS: PIPE DIA(IN) TAPE WIDTH OVERLAP 1 1/2 2 3/8 2 2 3/8 4 4 1/2
11.113	4" DIAMETER SCHEDULE 40 PVC WITH .020 WELL SCREEN, MUST BE FACTORY SLOTTED. NO FIELD SLOTTING ALLOWED
11.118	3" SCH 40 IRON UNION PAINT TRAFFIC YELLOW
11.119	40 BLACK IRON PIPE PRIME AND PAINT TRAFFIC YELLOW
11.120	FILL AND PROTECT WITH CEMENT TO BOTTOM. REMOVE CONCRETE COLLAR
11.122	PLACE CONCRETE COLLAR AFTER PLACEMENT OF COLLAR AND VENT PIPING
11.123	1" STEEL ANGLE OR 1 1/4" X 1 1/4" UNISTRUT YELLOW TO BOLLARDS AND PAINT TRAFFIC YELLOW
11.124	ATTACH VENT PIPING TO ANGLE WITH PIPE CLAMPS AND PAINT TRAFFIC YELLOW (2) PER VENT PIPE
11.125	4" STANDARD PIPE BOLLARD, CEMENT FILLED WITH TOP FARGED SMOOTH. PAINT TRAFFIC YELLOW
11.126	PAINT MANHOLE COVER REFER TO MANHOLE COVER PAINT SCHEDULE
11.127	SET RIM OF MANHOLE 1" ABOVE SURROUNDING GRADE. SLOPE CONCRETE AWAY FROM MANHOLE AT MAXIMUM 1/4" PER FOOT
11.143	INSTALL SPILL BUCKET SUMP SENSOR IN ACCORDANCE WITH MANUFACTURER'S INSTRUCTIONS
11.144	INSTALL DUAL FLOAT HYDROSTATIC SENSOR IN ACCORDANCE WITH MANUFACTURER'S INSTRUCTIONS
11.145	INSTALL DETECTABLE UNDERGROUND TAPE ABOVE FUEL AND VENT PIPING IN ACCORDANCE WITH MANUFACTURER'S RECOMMENDATIONS. DEPTH SHALL BE 12" TO 18" MAX BELOW FINISH GRADE.



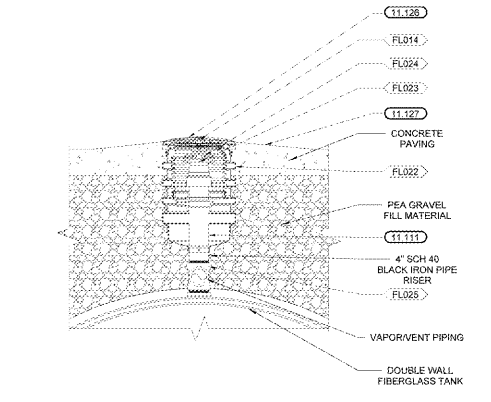
6 HYDROSTATIC INTERSTITIAL MONITOR
NTS



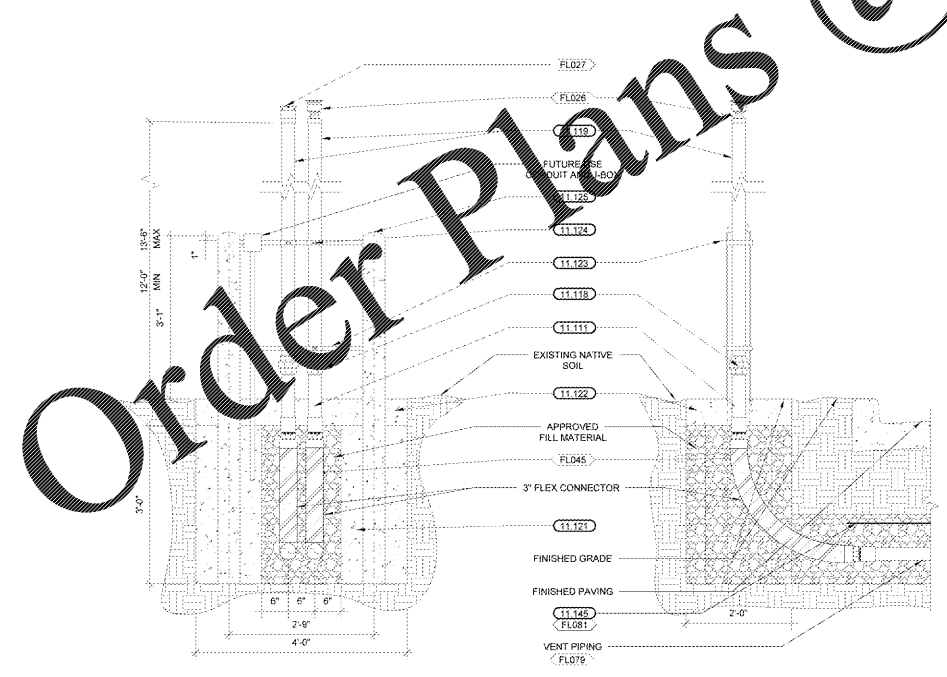
7 TANK LEVEL MONITOR DETAIL
NTS



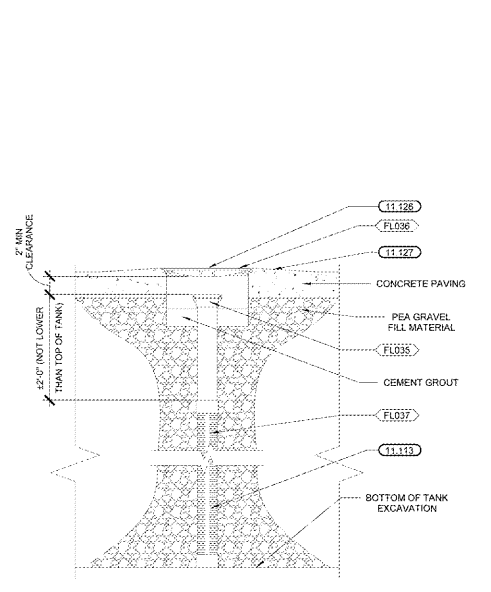
5 DIESEL VENT PIPING CONNECTION
NTS



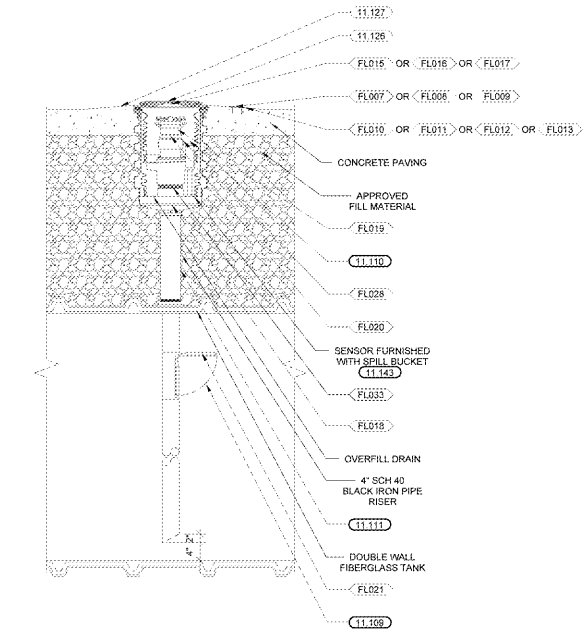
4 UNLEADED VAPOR RECOVERY DETAIL
NTS



3 VENT RISER DETAIL
NTS



2 OBSERVATION WELL DETAIL
NTS



1 PRODUCT FILL DETAIL
NTS

REGISTRATION FOR BELOW:

CONTRACTOR:

David P. Kimball
OWNER: SAMS CLUB

DATE: 03/20/19
DRAWN BY: DAD
FILE NAME: FST5
PROTO CYCLE: 102516
DOCUMENT DATE: 08/20/19

CHARLOTTE, NC
SAMS CLUB
CLUB#: 6540

ISSUE BLOCK

CHECKED BY: JMS
DRAWN BY: DAD
FILE NAME: FST5
PROTO CYCLE: 102516
DOCUMENT DATE: 08/20/19

NOT FOR CONSTRUCTION

TANK AND VENT PIPING DETAILS

SHEET: FST5

Order Plans @ www.LDILine.com