

8 SIGN ATTACHMENT
1/2" = 1'-0" 6 FSA1

MOUNTING HOLE PATTERNS FOR ILLUMINATED SIGN INSTALLATION PROVIDED BY WALMART

10-24 x 1-1/2" HEX BOLTS AND WASHERS BY SIGN SUPPLIER

INSTALL HEX BOLTS THRU WASHER AND LETTER BACK PRIOR TO INSTALLATION BY SIGN INSTALLER

17/8" DIA HOLE FILLED WITH ADHESIVE SEALANT. COAT ALL THREAD STUD WITH ADHESIVE SEALANT PRIOR TO WALL ATTACHMENT. BY SIGN INSTALLER

INDIVIDUAL PLASTIC ILLUMINATED CHANNEL LETTERS BY SIGN SUPPLIER

INSTALL LETTER FACES W/ SET SCREWS. TYP BY SIGN INSTALLER

1/2" x 13 ALL-THREAD WASHER AND NUT W/ 1/2" DIA HOLE FILLED W/ ADHESIVE SEALANT AT DIGITAL PRICE SIGN (MIN OF FOUR REQUIRED)

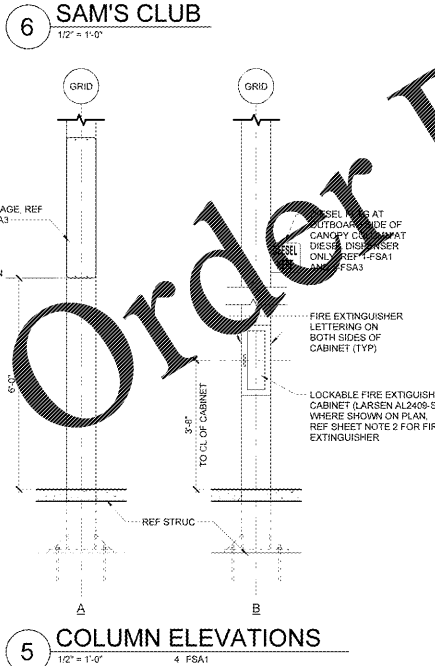
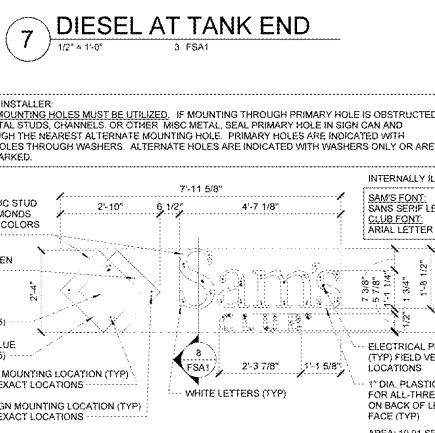
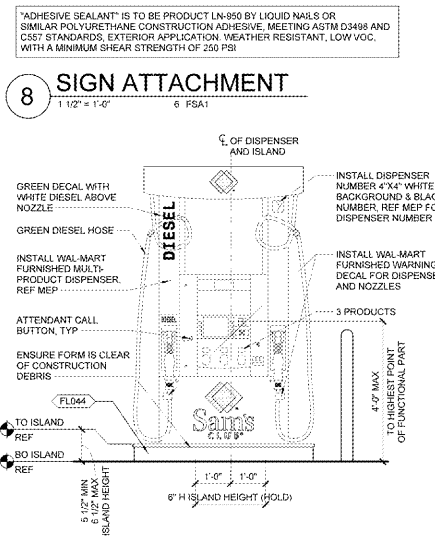
PREFINISHED COMPOSITE METAL PANEL BY BUILDING CONTRACTOR

INSTALL LOCK WASHER AND NUT, TYP BY SIGN INSTALLER

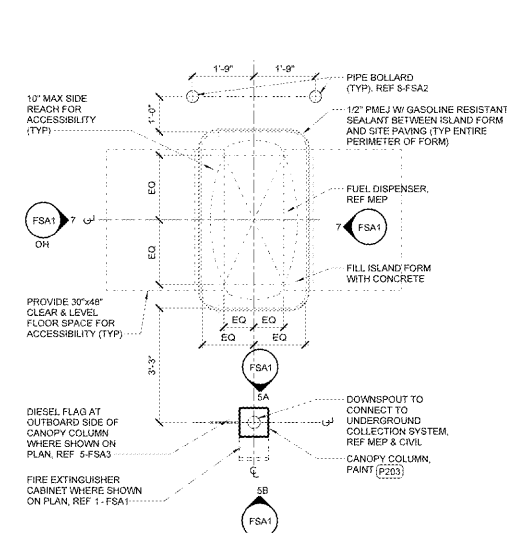
3/4" CONDUIT W/ WATER TIGHT FITTING AND CONT SEALANT AT DIGITAL PRICE SIGN (OMIT AT SIM)

17/8" DIA HOLE FILLED WITH ADHESIVE SEALANT FOR WIRE FEED TYP OF 1 PER LETTER BY SIGN INSTALLER

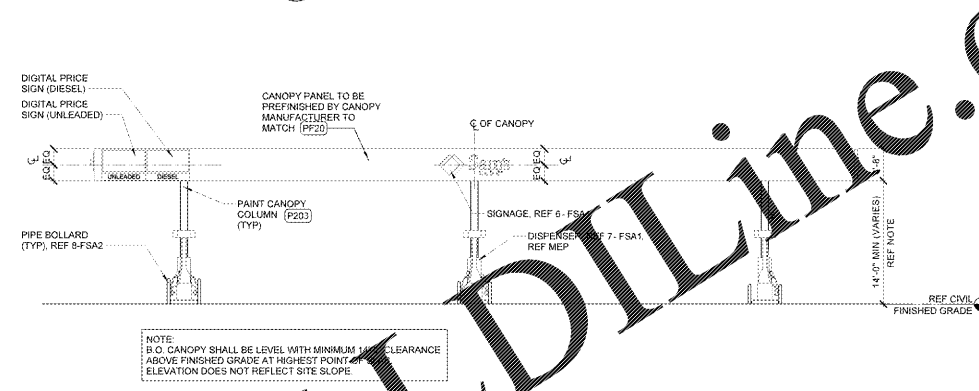
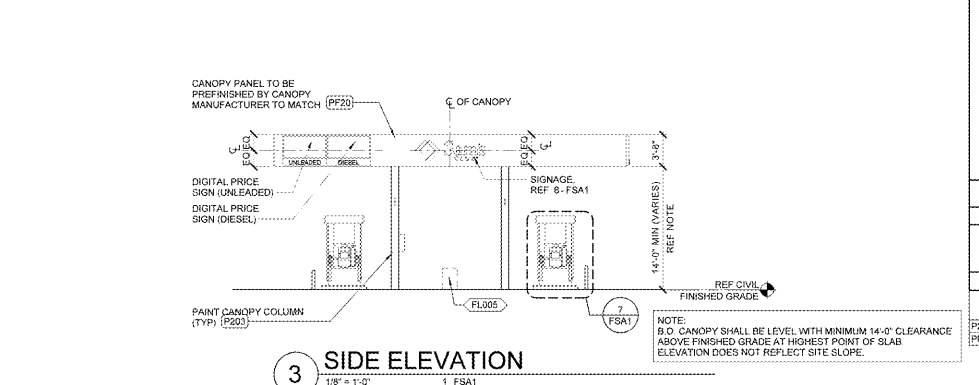
ADHESIVE SEALANT IS TO BE PRODUCT LN-950 BY LIQUID NAILS OR SIMILAR POLYURETHANE CONSTRUCTION ADHESIVE, MEETING ASTM D3498 AND CS37 STANDARDS, EXTERIOR APPLICATION, WEATHER RESISTANT, LOW VOC, WITH A MINIMUM SHEAR STRENGTH OF 200 PSI



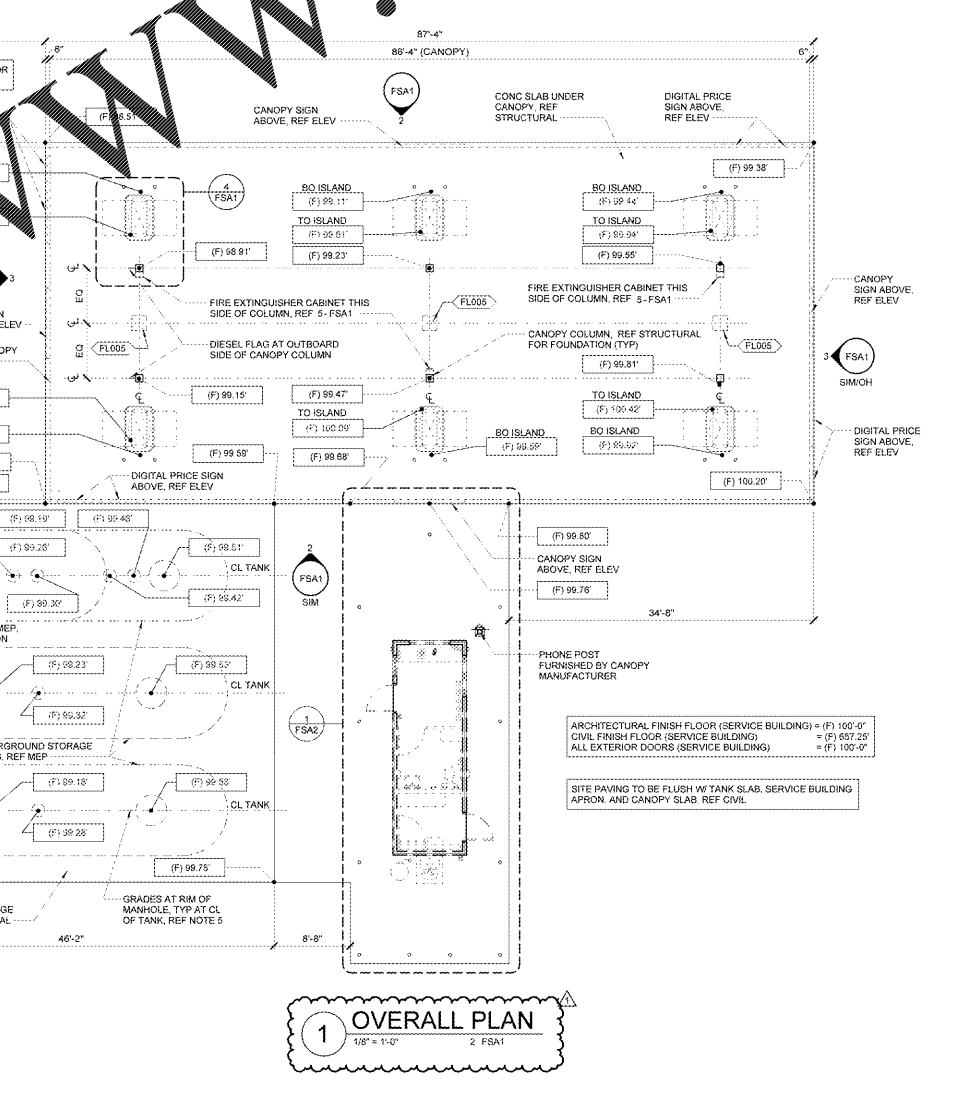
5 COLUMN ELEVATIONS
1/2" = 1'-0" 4 FSA1



4 DISPENSER ISLAND PLAN
1/2" = 1'-0" 1 FSA1



1 OVERALL PLAN
1/8" = 1'-0" 2 FSA1



1 OVERALL PLAN
1/8" = 1'-0" 2 FSA1

SHEET NOTES

- REFER TO MEP FOR ADDITIONAL INFORMATION. REF SHEET FST6 FOR EQUIPMENT ITEMS (FLXXX) NOT SCHEDULED ON FSA1.
- 40BC, 13 LB MINIMUM RATED FIRE EXTINGUISHERS SHALL BE PROVIDED BY G.C. IN ACCORDANCE WITH NFPA 10. FIRE EXTINGUISHER LOCATIONS AND SIZE SHALL BE APPROVED BY THE OFFICE OF THE FIRE MARSHAL PRIOR TO OCCUPANCY.
- ALL SIGNAGE MOUNTED ON CANOPY FASCIA (INCLUDING PRICE SIGN) IS FURNISHED AND INSTALLED BY WALMART.
- REFER TO CANOPY MANUFACTURER DRAWINGS FOR MORE INFORMATION.
- SPOT GRADES INDICATE RIM OF MANHOLE 1" ABOVE SURROUNDING GRADE. FIELD VERIFY SLOPE CONCRETE AWAY FROM MANHOLE AT MAXIMUM 14" PER FOOT. REF MEP.

SIGNS

CANOPY SIGNAGE	AREA
1. (4) x "SAM'S CLUB" SIGN - CANOPY	(4) x 19.01 SF
2. (4) x DIGITAL PRICE SIGN (UNLEADED)	(4) x 17.33 SF
3. (4) x DIGITAL PRICE SIGN (DIESEL)	(4) x 17.33 SF
TOTAL SIGNAGE	214.68 SF

CANOPY LEGEND

PP203	URBANE BRONZE
PP202	MATCH ALCOA

STIPULATION FOR REUSE

THIS DRAWING AND ANY INFORMATION CONTAINED HEREIN IS THE PROPERTY OF SAMS CLUB. IT IS TO BE USED ONLY FOR THE PROJECT AND SITE SPECIFICALLY IDENTIFIED HEREON. IT IS NOT TO BE REPRODUCED, COPIED, OR TRANSMITTED IN ANY FORM OR BY ANY MEANS, ELECTRONIC OR MECHANICAL, INCLUDING PHOTOCOPYING, RECORDING, OR BY ANY INFORMATION STORAGE AND RETRIEVAL SYSTEM, WITHOUT THE WRITTEN PERMISSION OF SAMS CLUB. ANY UNAUTHORIZED REUSE OF THIS DRAWING IS STRICTLY PROHIBITED.

CONSULTANTS

CHARLOTTE, NC

SAMS CLUB

CLUB NO: 6540

ISSUE BLOCK

REV	DATE	DESCRIPTION
1	REV 2	12-18-19

CHECKED BY: TTH
DRAWN BY: JC
FILE NAME: 192-FSA1
PROTO CYCLE: 10/25/18
DOCUMENT DATE: 09/20/19

NOT FOR CONSTRUCTION

TRAVELER, HOLCOMB AND ASSOCIATES
Architect in Residence
211 N. Second Street, Suite 222
Dulles, VA 22024
Tel: (703) 746-9165

CONSULTANTS

CHARLOTTE, NC

SAMS CLUB

CLUB NO: 6540

ISSUE BLOCK

REV	DATE	DESCRIPTION
1	REV 2	12-18-19

CHECKED BY: TTH
DRAWN BY: JC
FILE NAME: 192-FSA1
PROTO CYCLE: 10/25/18
DOCUMENT DATE: 09/20/19

NOT FOR CONSTRUCTION

CANOPY

FSA1