

REVISIONS	BY

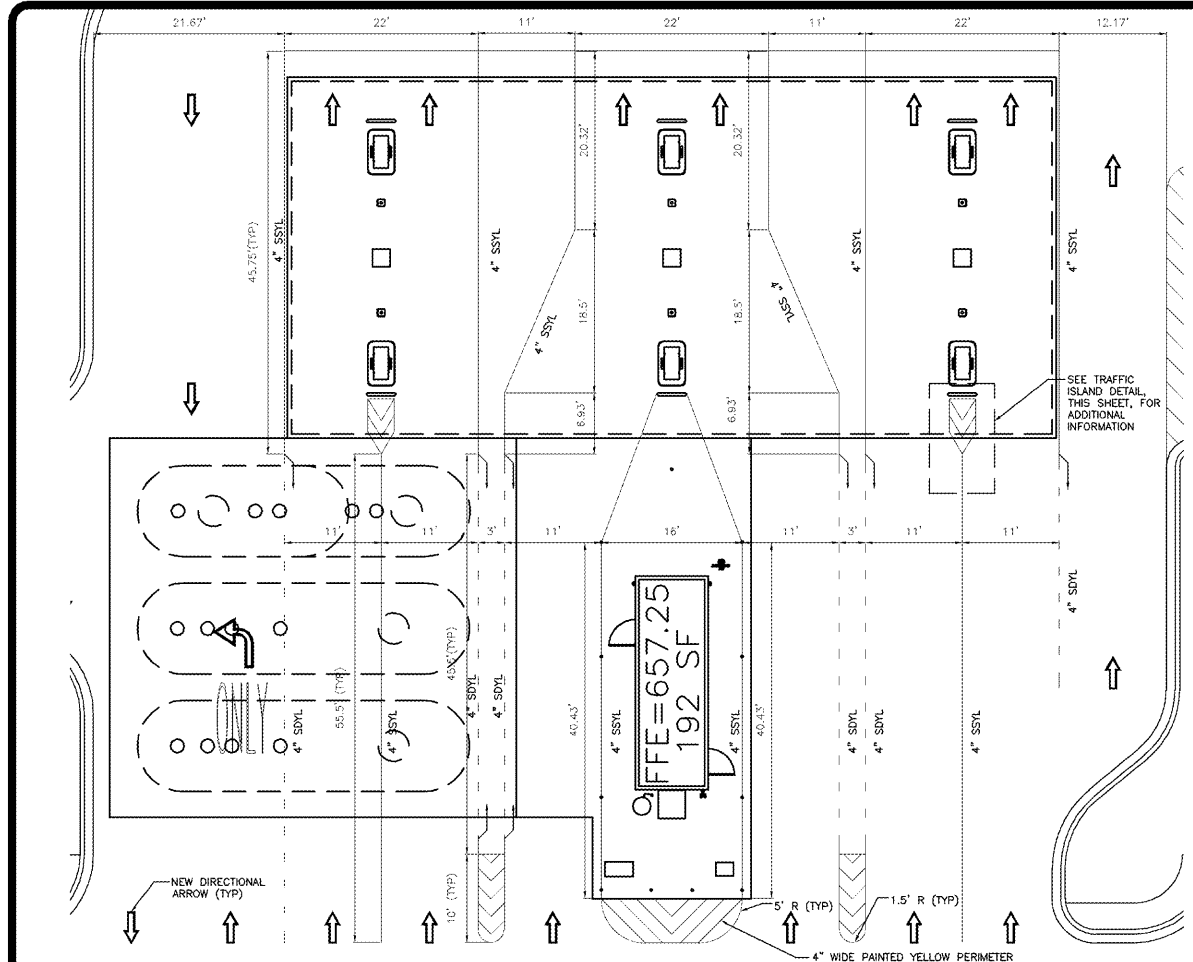
CARLSON CONSULTING ENGINEERS, INC.  
 7088 LEDGESTONE COMMONS  
 BARTLETT, TENNESSEE 38133  
 PH. (901) 384-0404 • FX. (901) 384-0710  
 NORTH CAROLINA CORPORATION # C-3504



SAM'S CLUB #6540-209  
 CHARLOTTE, NORTH CAROLINA  
 SAM'S REAL ESTATE BUSINESS TRUST  
 2101 SE SIMPLE SAVINGS DRIVE  
 BENTONVILLE, AR 72716

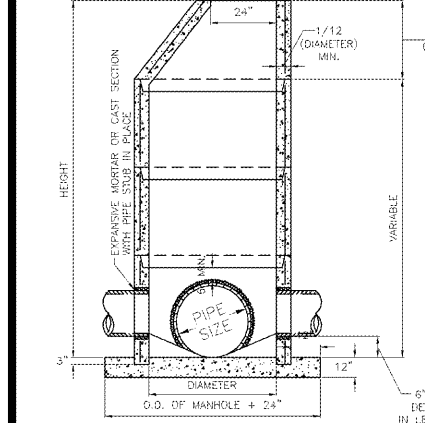


DRAWN TGH  
 CHECKED BKM  
 DATE 12/17/2019  
 SCALE NTS  
 JOB No. 6540-209  
 SHEET 19 OF 21

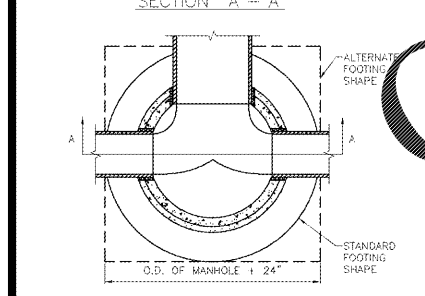


**KIOSK AND FUEL ISLAND STRIPING PLAN**

NOTE: TOP OF MANHOLE TO BE LEVEL WITH FINISH GRADE UNLESS OTHERWISE NOTED OR DIRECTED BY THE ENGINEER. USE ADJUSTMENT RINGS AS REQUIRED BUT NOT TO EXCEED 12".

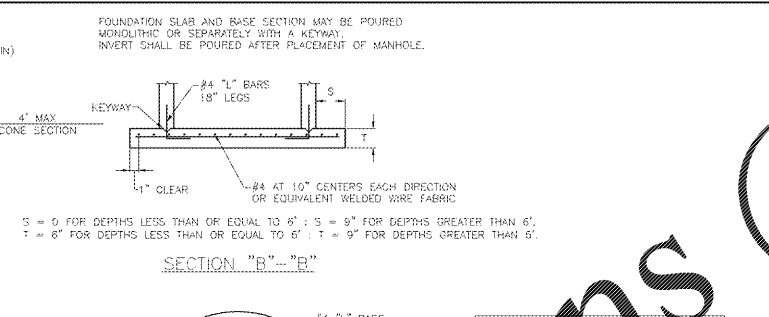


PRECAST BASE SECTION SET ON CONCRETE BLOCKS FOUNDATION SLAB AND INVERT POURED MONOLITHIC.



PLAN OF FOOTING

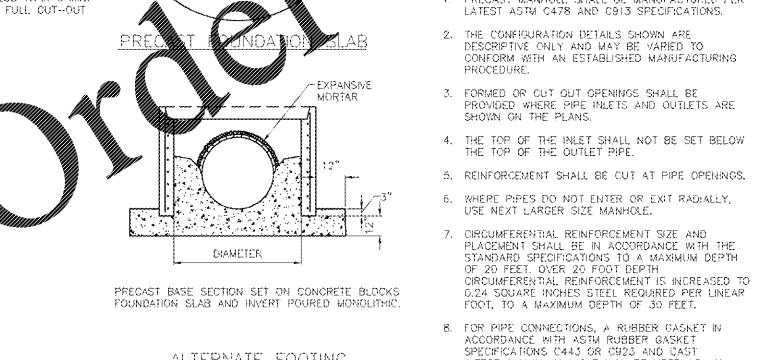
**JUNCTION BOX**



**BASE SECTION DIMENSIONS**

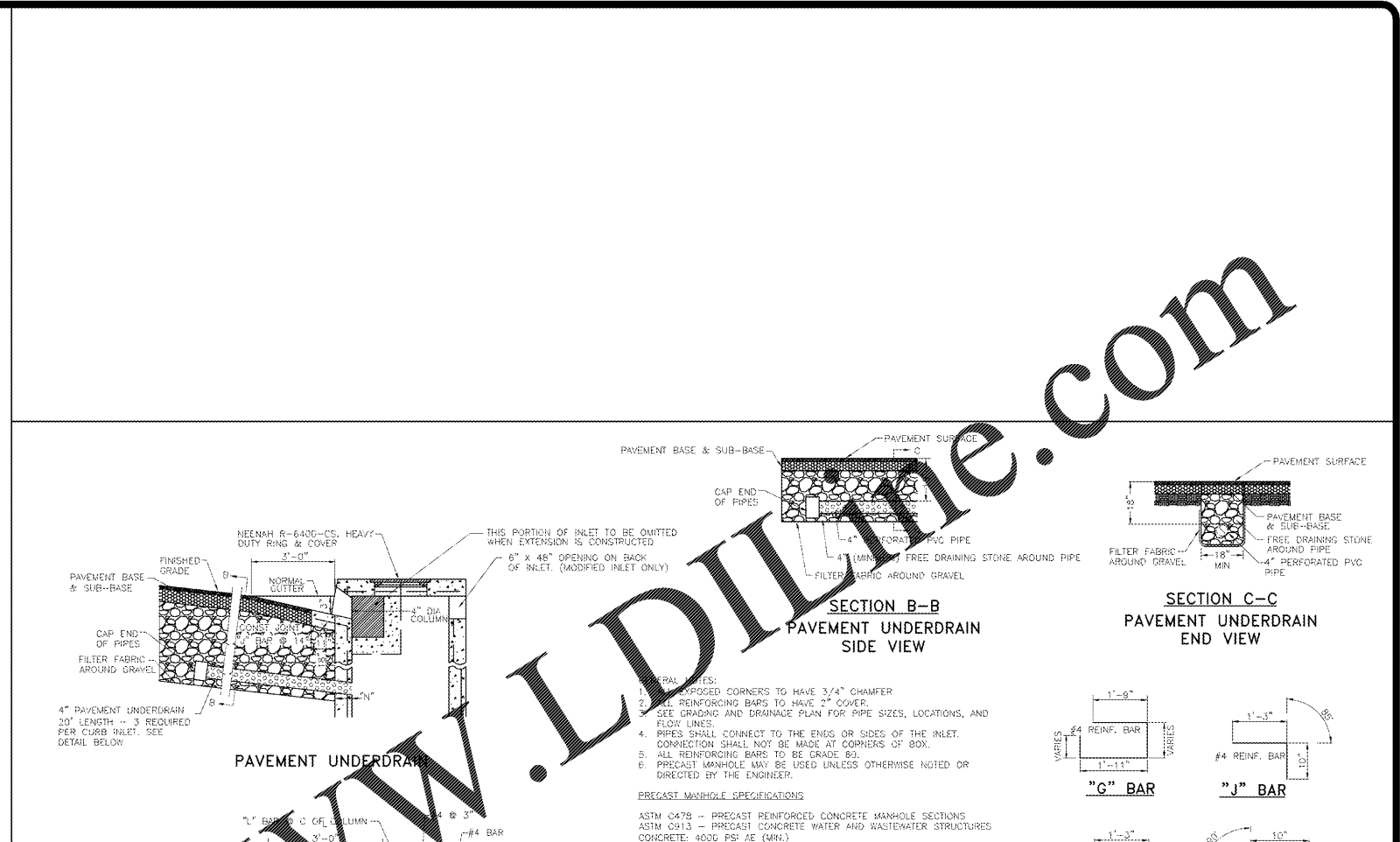
SIZE	PIPE	MIN. DIA.
24"	24"	48"
30"	30"	60"
36"	36"	60"
42"	42"	72"
48"	48"	72"

GENERAL NOTES:  
 1. PRECAST MANHOLE SHALL BE MANUFACTURED PER LATEST ASTM C478 AND C913 SPECIFICATIONS.  
 2. THE CONFIGURATION DETAILS SHOWN ARE DESCRIPTIVE ONLY AND MAY BE VARIED TO CONFORM WITH AN ESTABLISHED MANUFACTURING PROCEDURE.  
 3. FORMED OR CUT OUT OPENINGS SHALL BE PROVIDED WHERE PIPE INLETS AND OUTLETS ARE SHOWN ON THE PLANS.  
 4. THE TOP OF THE INLET SHALL NOT BE SET BELOW THE TOP OF THE OUTLET PIPE.  
 5. REINFORCEMENT SHALL BE CUT AT PIPE OPENINGS.  
 6. WHERE PIPES DO NOT ENTER OR EXIT RADIALLY, USE NEXT LARGER SIZE MANHOLE.  
 7. CIRCUMFERENTIAL REINFORCEMENT SIZE AND PLACEMENT SHALL BE IN ACCORDANCE WITH THE STANDARD SPECIFICATIONS TO A MAXIMUM DEPTH OF 20 FEET. OVER 20 FOOT DEPTH CIRCUMFERENTIAL REINFORCEMENT IS INCREASED TO 0.24 SQUARE INCHES STEEL REQUIRED PER LINEAR FOOT, TO A MAXIMUM DEPTH OF 30 FEET.  
 8. FOR PIPE CONNECTIONS, A RUBBER GASKET IN ACCORDANCE WITH ASTM RUBBER GASKET SPECIFICATIONS C443 OR C923 AND CAST INTERNALLY IN MANHOLE MAY BE USED AS AN ALTERNATE TO EXPANSIVE MORTAR.

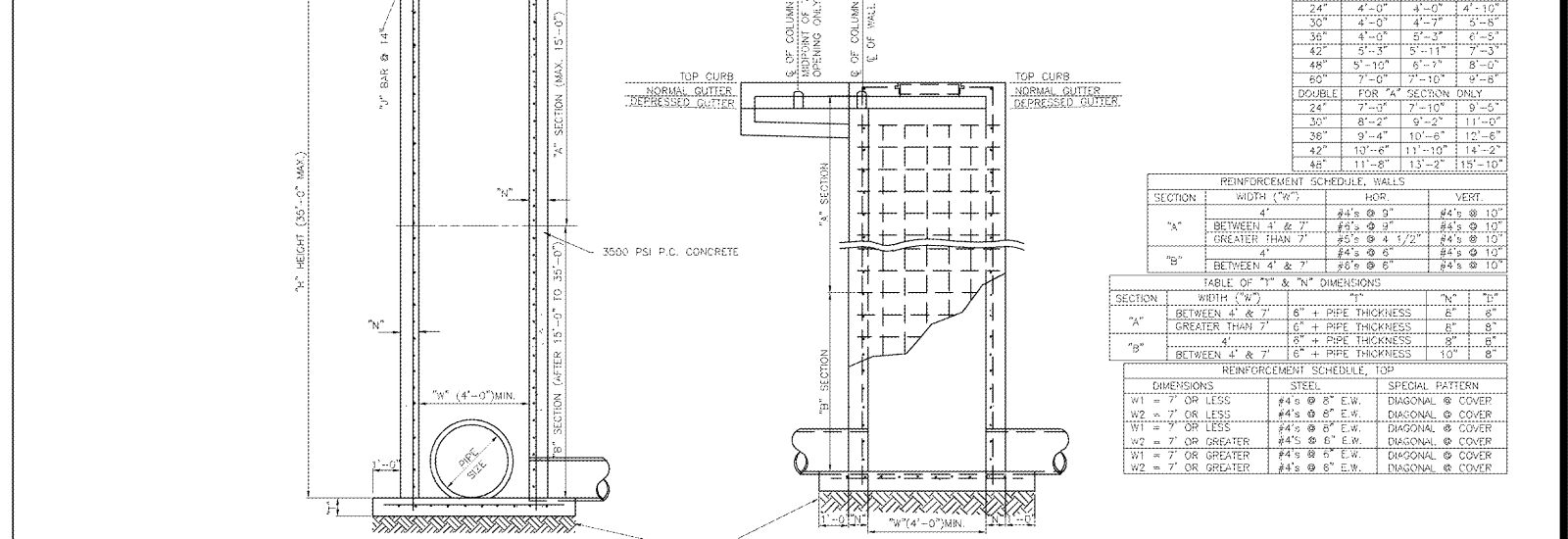
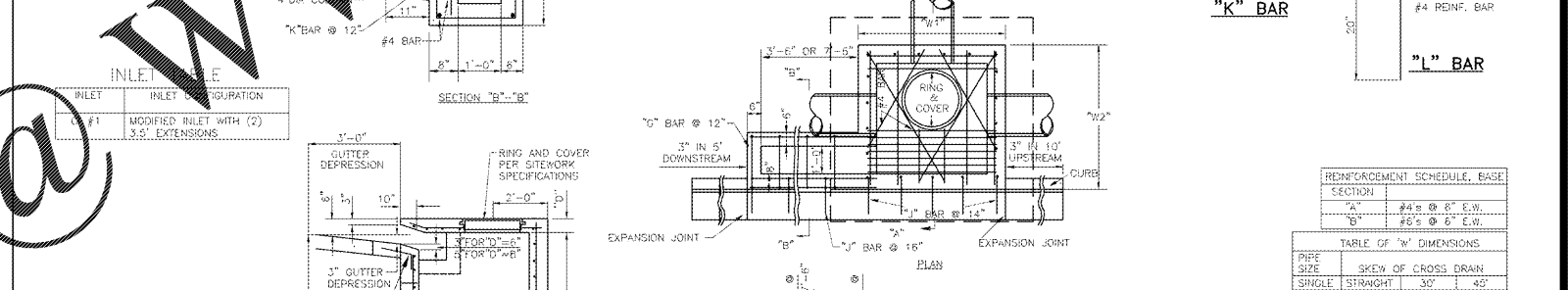


PRECAST BASE SECTION SET ON CONCRETE BLOCKS FOUNDATION SLAB AND INVERT POURED MONOLITHIC.

**ALTERNATE FOOTING**



**PAVEMENT UNDERDRAIN DETAILS**



COMPACT SUBGRADE TO 80% STD. PROCTOR

**CURB INLET DETAILS**

**Order Plans @**

WWW.LDILLINE.COM

**DETAILS**