

KITCHEN DEVICE SCHEDULE							
NUMBER	DESCRIPTION	MANUFACTURER	MODEL	VOLT/PHASE	AMPS	TERMINATION	MTG. HT. NOTES
DELI EQUIPMENT SCHEDULE							
D0078	SLICER	BIZERBA	GSP HXGSP HD	120/1	3.50 A	WP GPI DUPLEX NEMA 5-20R	44" K
D0078.1	SLICER	BIZERBA	GSP HXGSP HD	120/1	3.50 A	WP CONNECTOR, NEMA 5-20C	44" K
D102	BLAST CHILLER	TRAUlsen	TBC-13	208/120/1	16.00 A	WP CONNECTOR, NEMA L14-20C	20" K
REFRIGERATED AND HOT CASE SCHEDULE							
RD909-6	ISLAND MERCHANDISER	STRUCTURAL CONCEPTS	M48R	208/1	12.20 A	NEMA 6-20R	10" C K
RH0122-4	4" HOT DELI SELF-SERVICE MULTI-DECK	CUSTOM DEL'S	DLW-55	120/208/3	10.00 A	WP JUNCTION BOX	12" E F
RH0135-6	6" HOT DELI SELF-SERVICE MULTI-DECK	CUSTOM DEL'S	DLW-CB-SS	120/208/3	26.00 A	WP JUNCTION BOX	12" E F

A. PROVIDE CORROSION RESISTANT PLUG, CONNECTOR, AND WEATHERPROOF BOOTS. CONNECTOR AND WEATHERBOOTS SHALL BE FROM THE SAME MANUFACTURER.
 B. PROVIDE MATCHING CORD AND MALE PLUG.
 C. WIRING DEVICE ON DROP CORD FROM CEILING. REFER TO SUSPENDED DROP CORD DETAILS.
 D. WIRING DEVICE CIRCUITED TO SHUNT TRIP BREAKER.
 E. PROVIDE WEATHERTIGHT FLEX CONDUIT AND WIRING FROM DISCONNECT SWITCH OR JUNCTION BOX TO EQUIPMENT KNOCKOUT OR ELECTRICAL CONNECTION POINT.
 F. MAKE FINAL CONNECTIONS TO EQUIPMENT.
 G. PROVIDE CORROSION PROOF PLUGS AND RECEPTACLES FOR EQUIPMENT SPECIFIED ON ELECTRICAL EQUIPMENT SCHEDULE NOTES.
 H. VERIFY EXACT POINT(S) OF CONNECTION(S) AND FIELD WIRING REQUIREMENTS WITH EQUIPMENT INSTALLER.
 I. IF NOT FURNISHED WITH EQUIPMENT, FURNISH AND INSTALL 6'-0" LONG SJO CORD WITH GROUNDING CONDUCTOR. SIZED AS FOLLOWS:
 5 CONDUCTORS: #6W (2SA), #10W (20A), #12W (16A), #14W (12A) 4 CONDUCTORS: #4 (60A), #8W (35A), #10W (25A), #12W (20A), #14W (15A).
 3 CONDUCTORS: #6W (60A), #10W (20A), #12W (25A), #14W (15A). FURNISH AND INSTALL GROUNDING TYPE ATTACHMENT CAP.
 J. SEE ELECTRICAL SPECIFICATIONS FOR RECEPTACLE, CONNECTOR, AND PLUG INFORMATION. PROVIDE AS REQUIRED.
 K. CORD AND PLUG FURNISHED WITH EQUIPMENT.
 L. FAN CONNECTED THROUGH 120V RELAY, 15A MAX

KEYNOTES

- 16.131 CONNECT TO EXISTING CIRCUIT.
- 16.145 CONNECT CIRCUIT(S) TO EXISTING BRANCH CIRCUITRY. MINIMUM WIRE SIZE AND PANELBOARD CIRCUIT ARE NOTED. VERIFY SIZE, RATING AND CONDITION OF EXISTING BRANCH CIRCUIT CONDUIT AND WIRE PRIOR TO USE TO ENSURE THAT THEY MEET REQUIRED SIZE, AND ALL U.L. RATINGS AND REPLACE AS REQUIRED.
- 16.461 WATER HEATERS: A. DISCONNECT EXISTING AND RECONNECT NEW WATER HEATERS COORDINATE WITH MECHANICAL CONTRACTOR. B. FURNISH AND INSTALL HANDLE LOCKS (LOCK OFF) ON ALL CIRCUIT BREAKERS FEEDING WATER HEATERS.
- 16.470 FURNISH AND INSTALL NEW 20 AMP, 120 VOLT CIRCUIT(S) FEED FROM PANELBOARD AS INDICATED. PROVIDE 20A-1P CIRCUIT BREAKER IF NEEDED. E.C. SHALL MATCH MANUFACTURER, TYPE AND AIC RATINGS OF EXISTING CIRCUIT BREAKERS.
- 16.472 FURNISH AND INSTALL NEW CIRCUIT BREAKER (PFA-2P) IN EXISTING PANELBOARD INDICATED. E.C. SHALL MATCH MANUFACTURER, TYPE AND AIC RATING OF EXISTING CIRCUIT BREAKERS.
- 16.475 PROVIDE 20A 5mA GFCI CIRCUIT BREAKER PERSONAL PROTECTION. E.C. SHALL MATCH MANUFACTURER, TYPE AND AIC RATINGS OF EXISTING CIRCUIT BREAKERS. RELIEVE, DEWIRE, AND RECONNECT ELECTRICAL DEVICES FOR RELOCATED AND/OR NEW EQUIPMENT. VERIFY LOCATION OF BRANCH CIRCUITRY, CONDUIT AND WIRE TO ENSURE THEY MEET ALL U.L. RATINGS AND REPLACE AS REQUIRED. VERIFY FINAL LOCATION OF RELOCATED NEW EQUIPMENT WITH WALMART CONSTRUCTION MANAGER PRIOR TO ROUGH-IN.
- 16.492 E.C. SHALL COORDINATE WITH GENERAL CONTRACTOR AND ARCHITECTURAL DEMOLITION PLANS THE EXTENT OF ELECTRICAL DEMOLITION. REMOVE UNUSED DEVICES, BOXES, CONDUITS, AND WIRING BACK TO ORIGINATING JUNCTION BOXES OR PANELBOARDS. REFERENCE POWER PLANS FOR CIRCUITRY TO BE REUSED. DEMOLITION SHALL NOT AFFECT ACTIVE CIRCUITS. IF CIRCUIT IS DEMOLISHED ALL THE WAY TO PANELBOARD, REMOVE CIRCUIT BREAKER AND REPLACE WITH FILLER PLATE. UPDATE TYPED WRITTEN CIRCUIT DIRECTORY IDENTIFYING CIRCUIT AS "SPACE". COORDINATE EXACT REQUIREMENTS WITH EXISTING CONDITIONS PRIOR TO BID.
- 16.775 E.C. SHALL DISCONNECT, EXTEND, AND RECONNECT ALL ELECTRICAL CIRCUITRY FOR NEW OR RELOCATED EQUIPMENT. REFERENCE POWER PLANS AS APPLICABLE. VERIFY CONDITION OF BRANCH CIRCUIT, CONDUIT, AND WIRE PRIOR TO USE TO ENSURE THAT THEY MEET ALL U.L. RATINGS AND REPLACE AS REQUIRED. COORDINATE THIS PROCESS WITH CONSTRUCTION MANAGER TO MINIMIZE DOWNTIME. LABEL ALL ASSOCIATED PANELBOARD SCHEDULES TO REFLECT LOAD DESCRIPTIONS.

STIPULATION FOR REUSE

CONSULTANTS

Walmart *
CAMDEN, SC
STORE NO. 06834-236
JOB NUMBER: 162011111 | PROJNO: 172 | PROJNO SC

2020 GENERAL REMODEL

ISSUE BLOCK

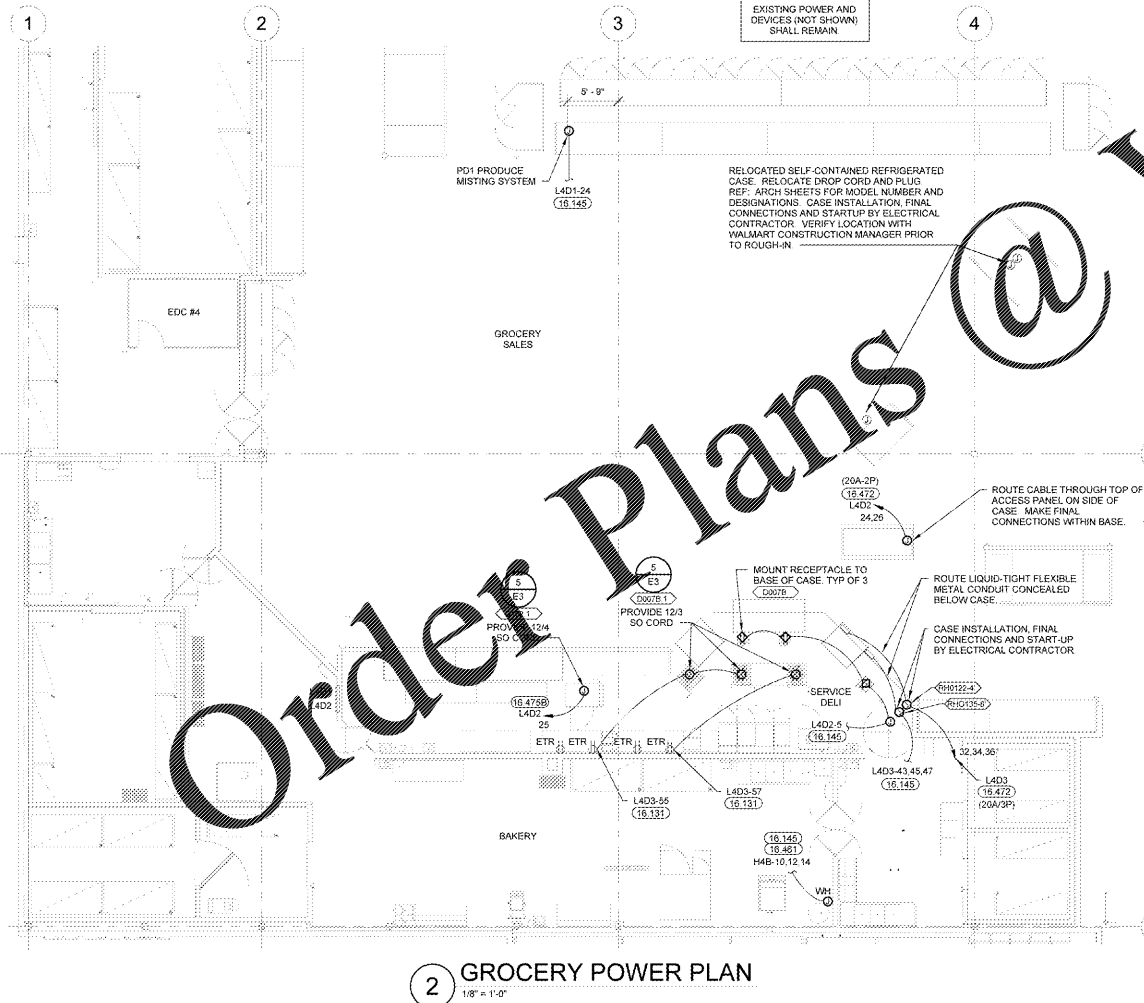
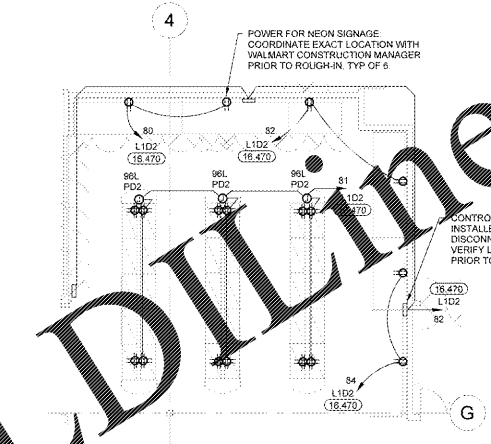
CHECKED BY: JEE
DRAWN BY: TJP
PROTO CYCLE: 10/25/19
DOCUMENT DATE: 12/18/19

NOT FOR CONSTRUCTION

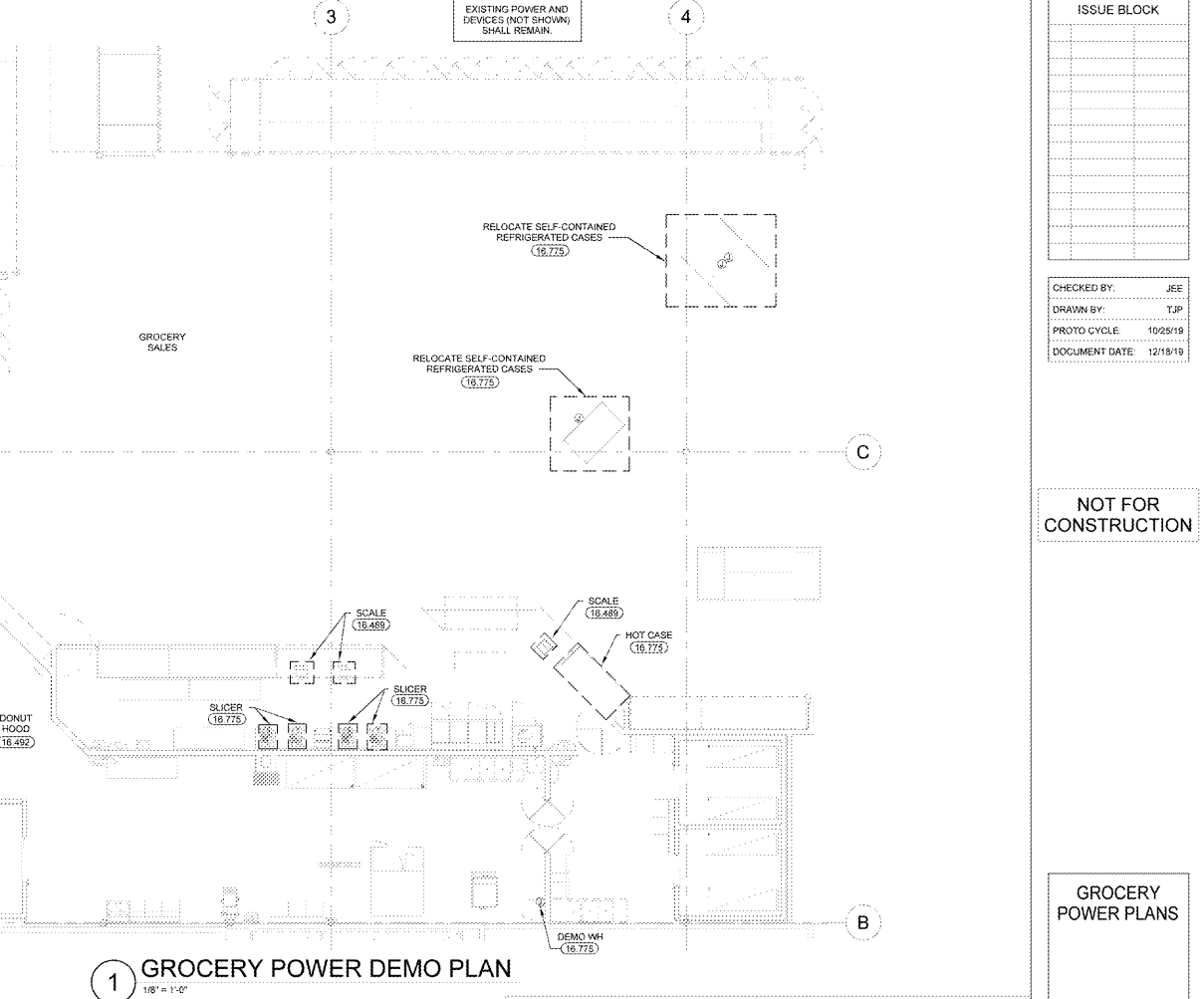
GROCERY POWER PLANS

SHEET: GE2

www.lidilme.com



2 GROCERY POWER PLAN 1/8" = 1'-0"



1 GROCERY POWER DEMO PLAN 1/8" = 1'-0"

EXISTING CONDITIONS WERE TAKEN FROM ORIGINAL DRAWINGS AND MAY NOT REFLECT EXACT "AS-BUILT" CONDITIONS. CONTRACTOR SHALL FIELD VERIFY ALL EXISTING CONDITIONS PRIOR TO SUBMITTING FINAL BIDS. CONTRACTOR SHALL CAREFULLY COORDINATE NEW WORK AND DEMOLITION WITH ALL OTHER DISCIPLINES AND EXISTING CONDITIONS.

EACH SUBCONTRACTOR IS RESPONSIBLE FOR HAVING A THOROUGH KNOWLEDGE OF ALL DRAWINGS AND SPECIFICATIONS IN THEIR RELATED FIELD. THE FAILURE TO ACCUANTY THEMSELVES WITH THIS KNOWLEDGE DOES NOT RELIEVE THE RESPONSIBILITY OF PERFORMING THE WORK PROPERLY. NO ADDITIONAL COMPENSATION SHALL BE ALLOWED BECAUSE OF CONDITIONS THAT OCCUR DUE TO FAILURE TO FAMILIARIZE WORKERS WITH THIS KNOWLEDGE.