

FAN, ANTI-SWEAT, LIGHTING, DEFROST, AND CONTROL WIRING FOR ALL REFRIGERATED CASES BEING REPLACED WILL BE FED FROM OVERHEAD CIRCUITS FOR CASES CURRENTLY FED FROM UNDERGROUND AND INDICATED TO BE CONNECTED TO EXISTING CIRCUITRY SHALL BE INTERCEPTED AT BAR JOIST AND RE-ROUTED OVERHEAD. COORDINATE REMOVAL OF EXISTING UNDERGROUND CONDUIT AND WIRING WITH GC.

EXCEPTION: DELI SERVICE CASES CURRENTLY SERVED BY PITS AND TUNNELS.

WHERE EXISTING REFRIGERATION CHASES ARE BEING REMOVED, ANY DAMAGED OR IMPROPERLY SUPPORTED EMS CONDUITS WITHIN CHASE SHALL BE REPAIRED OR REPLACED AS REQUIRED. ANY EXISTING EMS CABLING WITHIN CHASE NOT INSTALLED IN CONDUIT SHALL BE RE-ROUTED THROUGH NEW CONDUIT. FINAL APPROVAL BY WALMART CONSTRUCTION MANAGER. REFERENCE ARCHITECTURAL DRAWINGS FOR REFRIGERATION CHASES BEING REMOVED.

GENERAL REFRIGERATION EMS NOTES

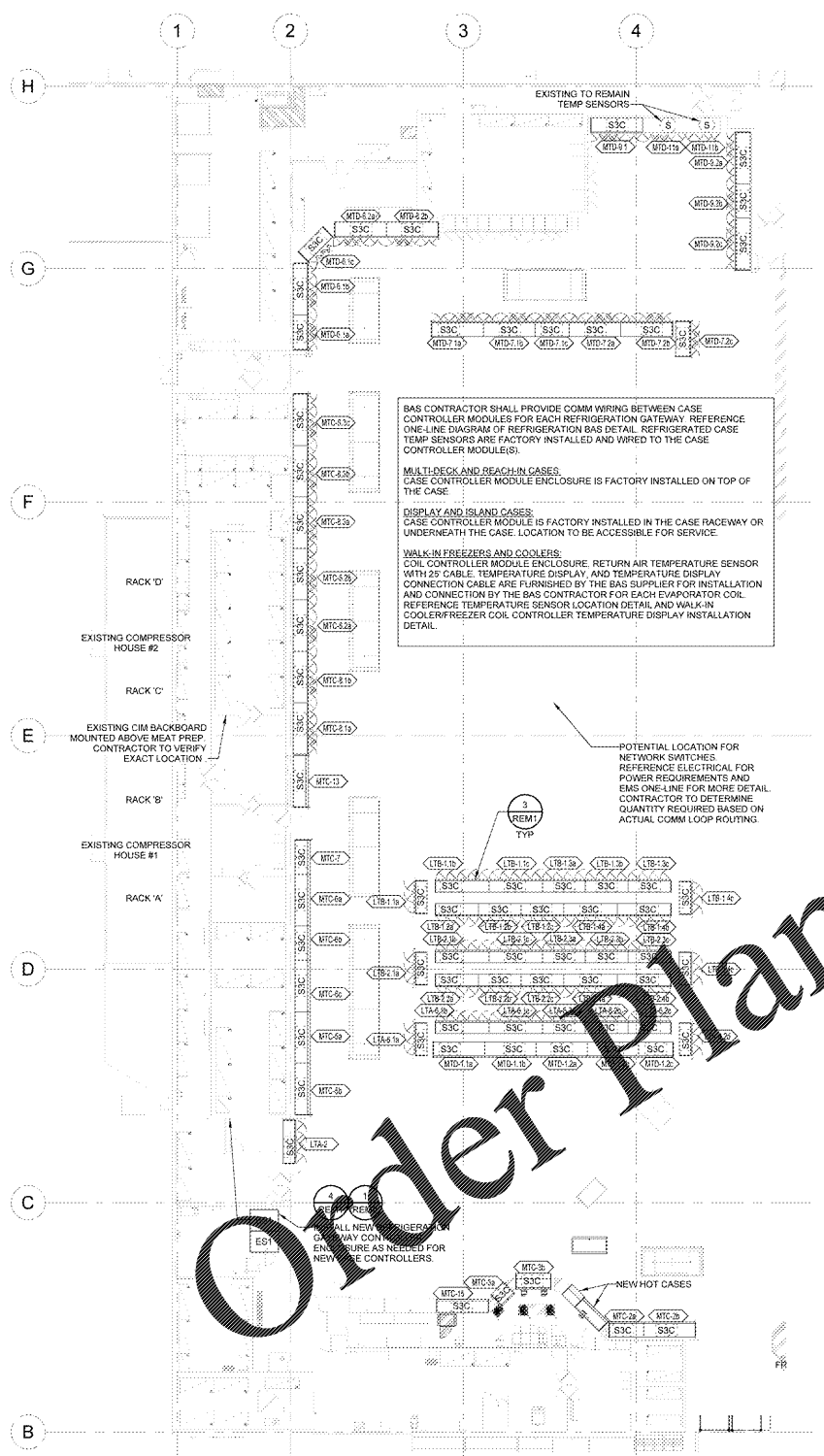
- EMS CONTRACTOR SHALL CONTACT THE EMS SUPPLIER(S) TO OBTAIN A CURRENT MODULE CONFIGURATION PRINTOUT BEFORE TERMINATING SENSOR LEADS AT INPUT MODULES. THE REQUEST FOR THE CONFIGURATION PRINTOUT SHALL BE MADE PRIOR TO THE INSTALLATION OF EMS CABLES. WIRING TERMINATIONS SHALL BE LANDED ACCORDING TO THE EMS SUPPLIER CONFIGURATION SHEETS.
- EMS CONTRACTOR SHALL PROVIDE COMPLETED REFRIGERATION SENSOR INPUT VERIFICATION FORMS TO THE EMS SUPPLIER(S) AT THE BEGINNING OF THE REFRIGERATION EQUIPMENT STARTUP. EMS INSTALLER SHALL PROVIDE ASSISTANCE TO THE EMS SUPPLIER(S) FOR SPOT CHECKING OF SENSORS FOR ACCURACY.
- ALL EMS CABLE ON THE SALES FLOOR SHALL BE ROUTED IN CONDUIT AND CONCEALED FROM VIEW AND ROUTED ALONGSIDE OTHER PIPING OR CONDUIT AS MUCH AS POSSIBLE.
- EMS CONTRACTOR SHALL BE PRESENT AND AVAILABLE TO RESOLVE ISSUES AND PROVIDE REFRIGERATION STARTUP ASSISTANCE UNTIL COMPLETED BY EMS SUPPLIER AND WALMART MECHANICAL CONSTRUCTION MANAGER. DURING REFRIGERATION STARTUP, EMS CONTRACTOR SHALL COMPLETE ALL REFRIGERATION WORK PRIOR TO OTHER EMS INSTALLATION ITEMS. WHEN THE EMS SUPPLIER IS NOT SCHEDULED TO PERFORM THE ON SITE REFRIGERATION STARTUP, THE ENERGY MANAGEMENT CONTRACTOR IS RESPONSIBLE FOR PERFORMING ALL CHECKS AND TEST TO ENSURE A FULLY FUNCTIONAL REFRIGERATION CONTROL SYSTEM. CONTACT THE EMS SUPPLIER FOR THE BLANK TEST VERIFICATION FORMS AND INSTRUCTIONS FOR COMPLETING. ALL COMPLETED TEST VERIFICATION FORMS SHALL BE RETURNED TO THE WALMART MECHANICAL CONSTRUCTION MANAGER.
- REFER TO ARCHITECTURAL DRAWINGS FOR PIPING INSTALLATION AND SEALING REQUIREMENTS FOR DEVICES SHOWN ON COOLER/FREEZER PANELS. DO NOT INSTALL PIPING WITHIN COOLER/FREEZER PANELS.
- ROUTE ALL UTILITY SERVICE LINES (PIPES AND CONDUIT) WITHIN STUD WALLS WHEREVER POSSIBLE ON COOLER/FREEZER PANELS IN FOOD PREP AREAS WHERE UTILITIES MUST BE EXPOSED. CONTRACTOR TO HAVE THE OPTION OF THE FOLLOWING:
 - SURFACE MOUNT UTILITIES WITH NON-CORROSIVE ANCHORS. SEAL BOTH SIDES OF PIPING/CONDUIT TO PANEL CONTINUOUSLY WITH SEALANT.
 - INSTALL UTILITIES 1/2" OFF FACE OF PANEL TO ALLOW FOR CLEANING; USE ONLY NON-CORROSIVE MATERIALS FOR SPACERS AND ANCHORS.
 - COVER UTILITIES WITH 20 GAUGE STAINLESS STEEL BENT PLATES MOUNTED TO WALL WITH NON-CORROSIVE ANCHORS. APPLY CONTINUOUS SEALANT ALONG EDGES AND JOINTS.
- REFERENCE ARCHITECTURAL DEMOLITION PLANS FOR FULL EXTENT OF DEMOLITION WORK REQUIRED.

EMS EQUIPMENT SALVAGE REQUIREMENTS

ALL DEMOLISHED NOWAR EMS EQUIPMENT SHALL BE RETURNED TO WALMART MECHANICAL SERVICES CONSTRUCTION MANAGER. EQUIPMENT TO BE RETURNED INCLUDES: EXECUTIVE CONTROLLERS; ICM(S), CIM(S), CCM(S), ETC. PROVIDE DOCUMENTATION FOR ALL EQUIPMENT REMOVED IN ACCORDANCE WITH SPECIFICATIONS AND REQUIRED CLOSE-OUT DOCUMENTS.

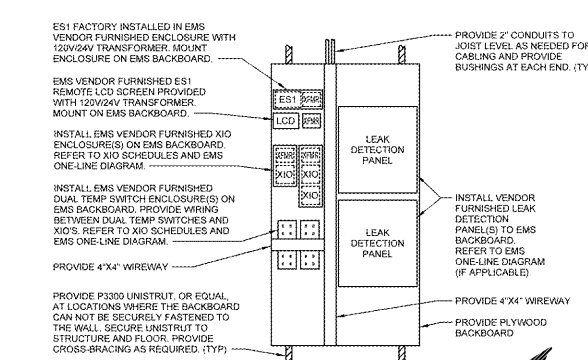
REM SYMBOLS

REFRIGERATION CIRCUIT	ES10
REFRIGERATION NETWORK GATEWAY	
RACK INPUT MODULE	
RACK OUTPUT MODULE	
CASE INPUT MODULE	
DIGITAL INPUT SWITCH (DUAL-TEMP)	
RELAY IN A BOX	
CASE/COIL TEMPERATURE MODULE	
UNIVERSAL INPUT MODULE	
INPUT/OUTPUT MODULE	
CONTROL RELAY	
CASE/COIL CONTROLLER (SPORLAN)	
PRESSURE TRANSDUCER	
FLOOR SWITCH	
INPUT/OUTPUT MODULE	
RCC CASE/CIRCUIT CONTROLLER (NOWAR)	



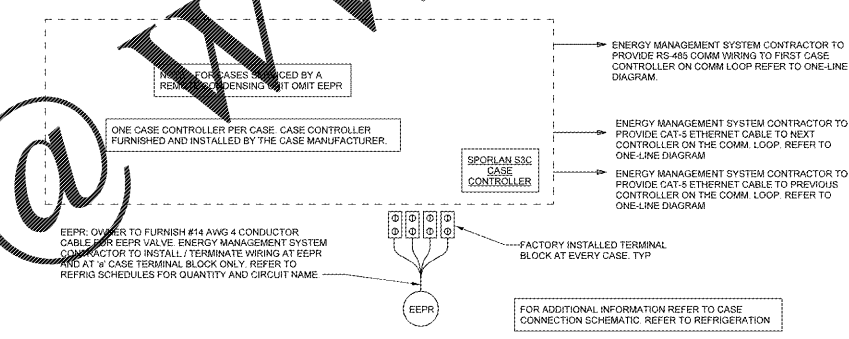
1 REFRIGERATION ENERGY MANAGEMENT PLAN
1/16" = 1'-0"

4 EMS BACKBOARD
NTS



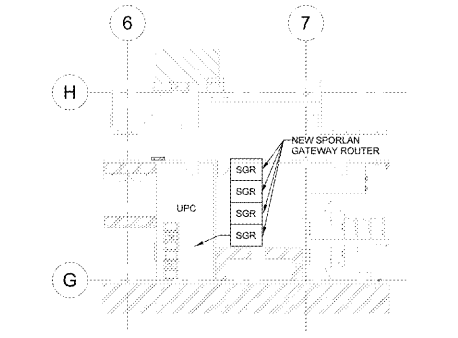
4 EMS BACKBOARD
NTS

3 CASE CONTROLLER WIRING (SPORLAN)
NTS



3 CASE CONTROLLER WIRING (SPORLAN)
NTS

2 UPC ENERGY MANAGEMENT PLAN
1/16" = 1'-0"



EXISTING CONDITIONS WERE TAKEN FROM ORIGINAL DRAWINGS AND MAY NOT REFLECT EXACT "AS-BUILT" CONDITIONS. CONTRACTOR SHALL FIELD VERIFY ALL EXISTING CONDITIONS PRIOR TO SUBMITTING FINAL BIDS. CONTRACTOR SHALL CAREFULLY COORDINATE NEW WORK AND DEMOLITION WITH ALL OTHER DISCIPLINES AND EXISTING CONDITIONS.

EACH SUBCONTRACTOR IS RESPONSIBLE FOR HAVING A THOROUGH KNOWLEDGE OF ALL DRAWINGS AND SPECIFICATIONS IN THEIR RELATED FIELD. THE FAILURE TO ACQUAINT THEMSELVES WITH THIS KNOWLEDGE DOES NOT RELIEVE THE RESPONSIBILITY OF PERFORMING THE WORK PROPERLY. NO ADDITIONAL COMPENSATION SHALL BE ALLOWED BECAUSE OF CONDITIONS THAT OCCUR DUE TO FAILURE TO FAMILIARIZE WORKERS WITH THIS KNOWLEDGE.

STIPULATION FOR REUSE
THIS DRAWING AND ANY INFORMATION CONTAINED HEREIN IS THE PROPERTY OF WALMART STORE #0634-296. IT IS TO BE USED ONLY FOR THE PROJECT AND SITE SPECIFICALLY IDENTIFIED HEREIN. IT IS NOT TO BE REPRODUCED, COPIED, OR TRANSMITTED IN ANY FORM OR BY ANY MEANS, ELECTRONIC OR MECHANICAL, INCLUDING PHOTOCOPYING, RECORDING, OR BY ANY INFORMATION STORAGE AND RETRIEVAL SYSTEM, WITHOUT THE WRITTEN PERMISSION OF WALMART STORE #0634-296.

CONSULTANTS
SIC ENGINEERING
MECHANICAL ENGINEERING
15500111

Walmart
CAMDEN, SC
STORE NO. 0634-296
JOB NUMBER: 1550111

ISSUE BLOCK

NO.	DESCRIPTION	DATE

CHECKED BY: KK
DRAWN BY: KS
PROTO CYCLE: 10/25/19
DOCUMENT DATE: 12/18/19

DOCUMENTS THAT DO NOT HAVE THE ARCHITECT OR ENGINEER OF RECORD SEAL AND SIGNATURE SHALL BE CONSIDERED NOT FOR CONSTRUCTION

REFRIGERATION ENERGY MANAGEMENT PLAN

SHEET: REM1