

KEYNOTES

- 15.402 CONNECT TO EXISTING HOT WATER PIPE OF EQUAL OR LARGER SIZE. VERIFY SIZE AND LOCATION AT SITE. PROVIDE SHUT-OFF VALVE IN NEW PIPE AT POINT OF CONNECTION.
- 15.403 CONNECT TO EXISTING SANITARY PIPE OF EQUAL OR LARGER SIZE. VERIFY SIZE, LOCATION, ELEVATION, AND FLOW DIRECTION AT SITE.
- 15.404 CONNECT TO EXISTING VENT PIPE OF EQUAL OR LARGER SIZE. VERIFY SIZE AND LOCATION AT SITE.
- 15.406 PLUMBING CONTRACTOR TO MAKE ALL NECESSARY DISCONNECTS AND RECONNECTS OF PLUMBING FIXTURES BEING RELOCATED OR NEW.
- 15.422 EXISTING PIPING TO REMAIN (VERIFY LOCATION IN FIELD).
- 15.425 REMOVE CONCRETE CLOSE TO RIM OF EXISTING FLOOR CLEANOUT AND ADJUST TOP OF FLOOR CLEANOUT FLUSH WITH FINISHED FLOOR. IF FLOOR CLEANOUT CANNOT BE ADJUSTED FLUSH WITH FINISHED FLOOR, REPLACE EXISTING FLOOR CLEANOUT WITH NEW FCOI.
- 15.429 CUT AND PATCH EXISTING CONCRETE FLOOR FOR INSTALLATION OF NEW MEAT PREP PLUMBING PIPE. MATCH EXISTING CONNECTION AND FINISHES.

STIPULATION FOR REUSE
 THE INFORMATION CONTAINED HEREIN IS THE PROPERTY OF RTM CONSULTANTS. IT IS TO BE USED ONLY FOR THE PROJECT AND SITE SPECIFICALLY IDENTIFIED HEREIN. IT IS NOT TO BE REPRODUCED, COPIED, OR TRANSMITTED IN ANY FORM OR BY ANY MEANS, ELECTRONIC OR MECHANICAL, INCLUDING PHOTOCOPYING, RECORDING, OR BY ANY INFORMATION STORAGE AND RETRIEVAL SYSTEM, WITHOUT THE WRITTEN PERMISSION OF RTM CONSULTANTS.

CONSULTANTS
rtm
 RTM CONSULTANTS
 3303 E. BRIDGES BLVD. SUITE 100
 MEMPHIS, TN 38118
 PHONE: 901.988.4332
 FAX: 901.988.4333

Walmart*
 CAMDEN, SC
 STORE NO. 00834-236
 JOB NUMBER: 1503111 | PROJECT: 172 PRJ010 SC
 2020 GENERAL REMODEL

ISSUE BLOCK

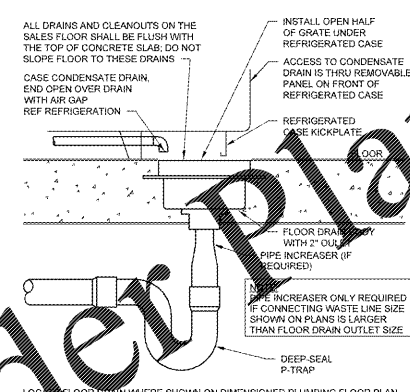
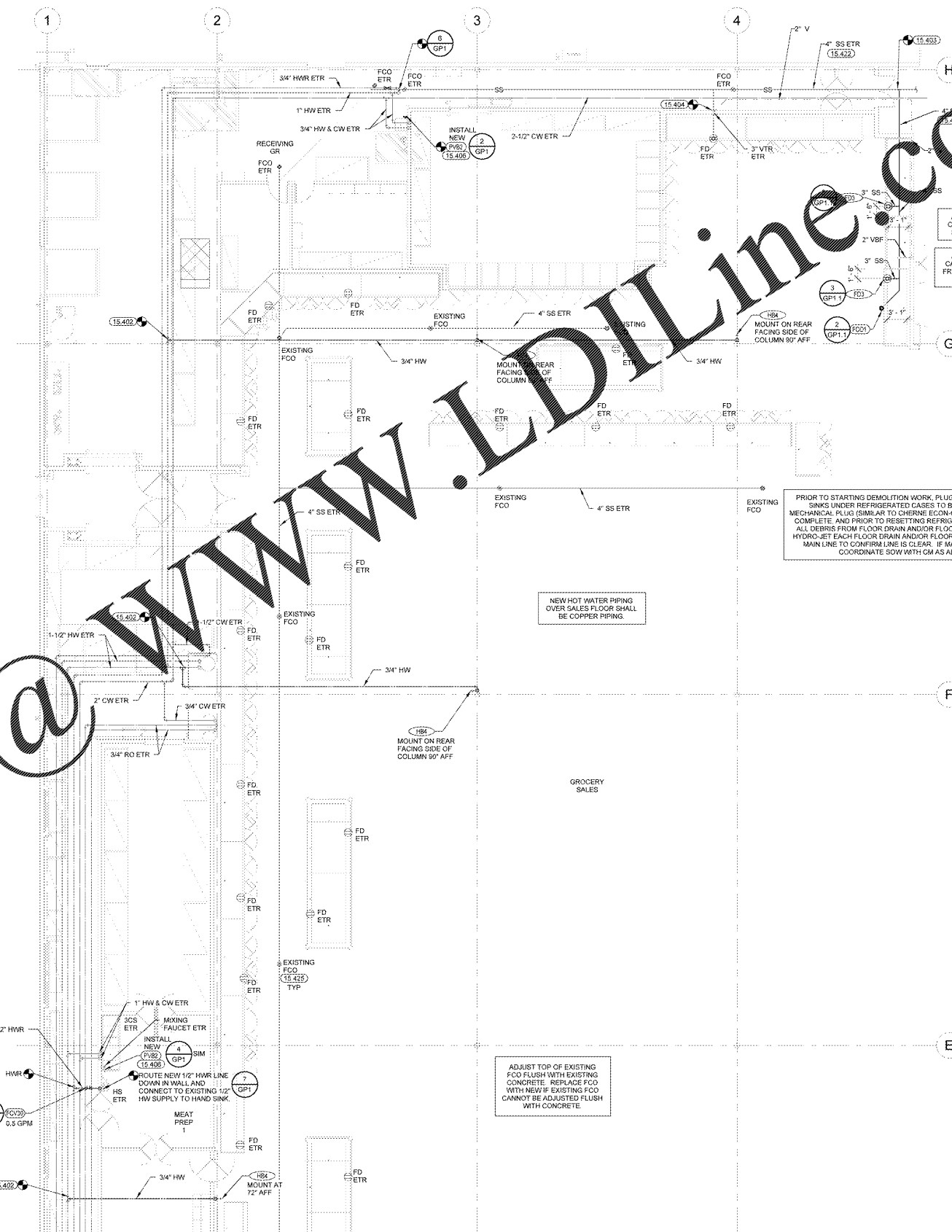
NO.	DATE	DESCRIPTION

CHECKED BY: JEE
 DRAWN BY: NEB
 PROJECT CYCLE: 10/25/19
 DOCUMENT DATE: 12/18/19

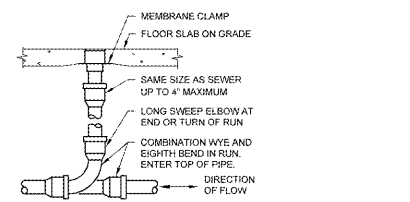
NOT FOR CONSTRUCTION

REAR GROCERY PLUMBING PLAN

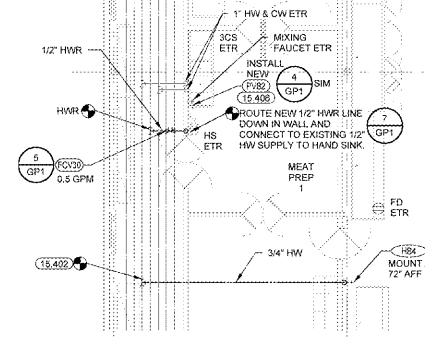
SHEET GP1.1



3 REFRIGERATED CASE DRAIN
 NTS



2 FLOOR CLEANOUT
 NTS



1 REAR GROCERY PLUMBING PLAN
 1/8" = 1'-0"

EXISTING CONDITIONS WERE TAKEN FROM ORIGINAL DRAWINGS AND MAY NOT REFLECT EXACT 'AS-BUILT' CONDITIONS. CONTRACTOR SHALL FIELD VERIFY ALL EXISTING CONDITIONS PRIOR TO SUBMITTING FINAL BIDS. CONTRACTOR SHALL CAREFULLY COORDINATE NEW WORK AND DEMOLITION WITH ALL OTHER DISCIPLINES AND EXISTING CONDITIONS.

EACH SUBCONTRACTOR IS RESPONSIBLE FOR HAVING A THOROUGH KNOWLEDGE OF ALL DRAWINGS AND SPECIFICATIONS IN THEIR RELATED FIELD. THE FAILURE TO ACCOUNT THEMSELVES WITH THIS KNOWLEDGE DOES NOT RELIEVE THE RESPONSIBILITY OF PERFORMING THE WORK PROPERLY. NO ADDITIONAL COMPENSATION SHALL BE ALLOWED BECAUSE OF CONDITIONS THAT OCCUR DUE TO FAILURE TO FAMILIARIZE WORKERS WITH THIS KNOWLEDGE.

Order plans @ www.LDILine.com