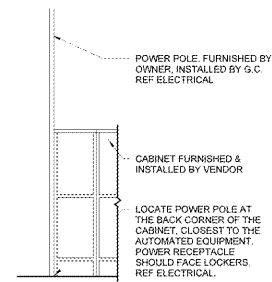
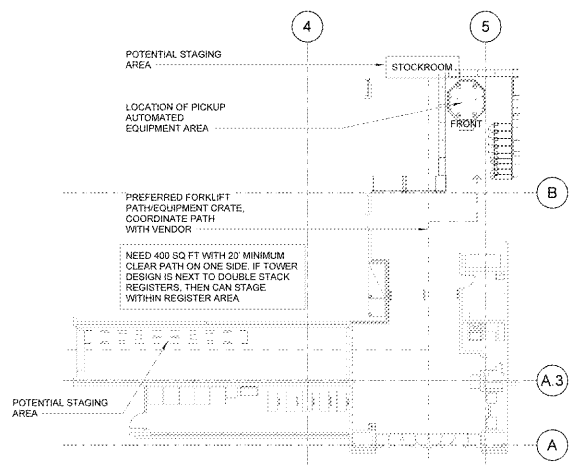


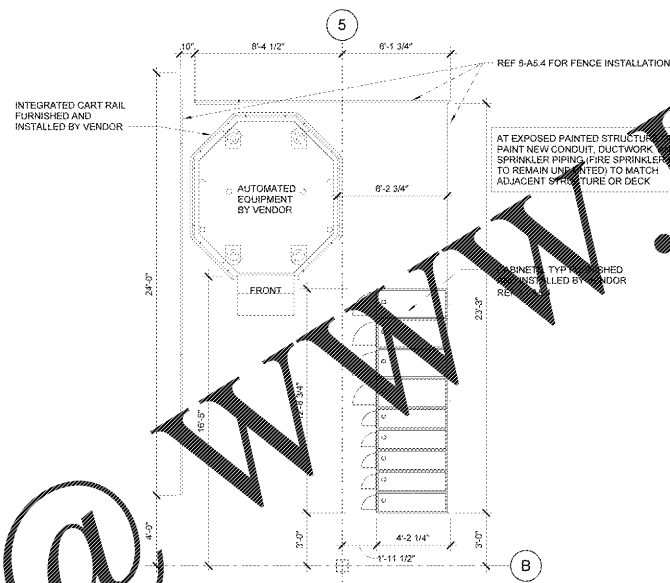
8 FLOOR MOUNTING PLAN AND SECTION
3/8" = 1'-0"



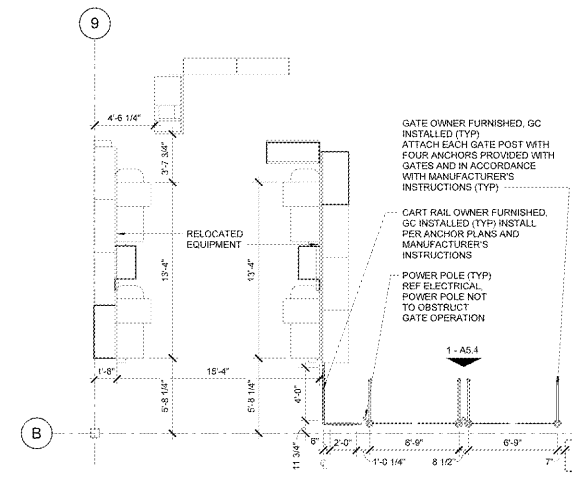
7 CABINET ELEVATION
1/2" = 1'-0"



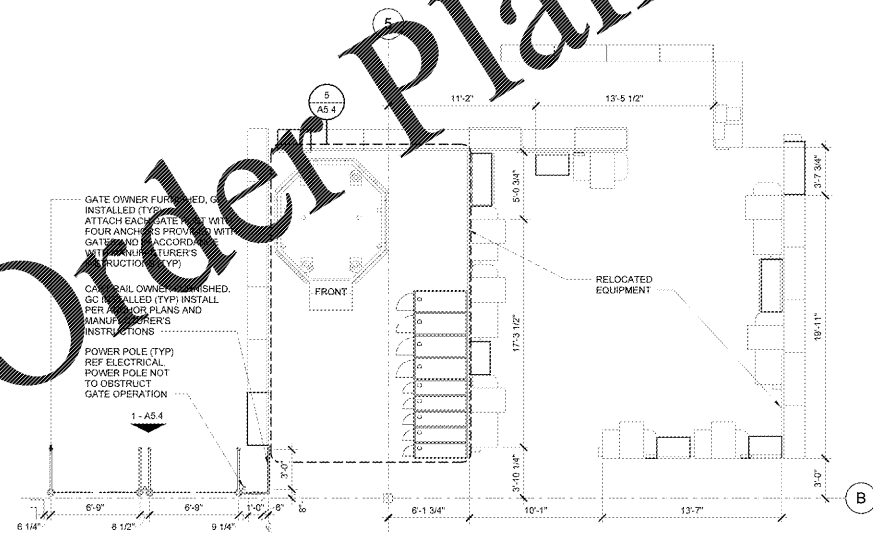
6 STAGING AREA AND DELIVERY PATH
1/16" = 1'-0"



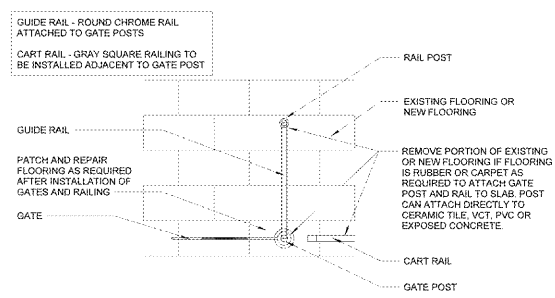
5 PICKUP PLAN
1/4" = 1'-0"



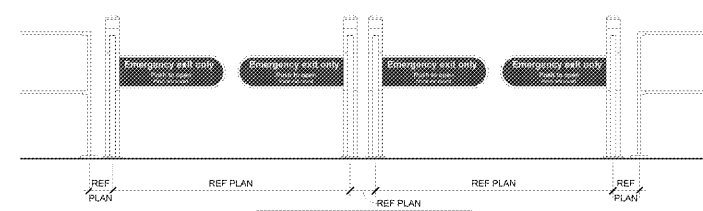
4 GM ENLARGED CHECKOUT PLAN
3/16" = 1'-0"



3 GR ENLARGED CHECKOUT PLAN
3/16" = 1'-0"



2 ACCESS GATE DETAIL
1/2" = 1'-0"



1 GATE ELEVATION
1/2" = 1'-0"

ACCESSIBLE GATE NOTES: REQUIREMENTS SET BY 2010 ADA CODE:
1. POST-MOUNTED OBJECTS: GATES MOUNTED BETWEEN TWO POSTS WITH A CLEAR DISTANCE BETWEEN POSTS GREATER THAN 12 INCHES. WILL HAVE THE BOTTOM OF THE GATE NO HIGHER THAN 27 INCHES. (2010 ADA 307.3)
2. VERTICAL CLEARANCE: AREA BETWEEN GATES WHEN OPEN WILL HAVE A VERTICAL CLEAR SPACE OF 80 INCHES HIGH MINIMUM ABOVE FINISH FLOOR. (2010 ADA 307.4)
3. REACH RANGES: GATES WILL BE LOCATED WITHIN 15 INCHES MINIMUM AND 48 INCHES MAXIMUM FOR FORWARD REACH SHOULD THE GATES NEED TO BE PUSHED OPEN. (2010 ADA 308.2.1)
4. CLEAR FLOOR SPACE: A CLEAR FLOOR SPACE OF 30 INCHES BY 48 INCHES PER REQUIRED BY SECTION 308 WILL BE PROVIDED IN FRONT OF GATES. (2010 ADA 309.2)
5. OPERATION: OPERABLE PARTS WILL BE OPERABLE WITH ONE HAND AND WILL NOT REQUIRE ANY FORCE GREATER THAN 5 POUNDS MAXIMUM TO OPEN THE GATES. (2010 ADA 309.4)

GATE SPECIFICATIONS: AS COMPLIANT WITH IBC 1010
1. GATES COMPLY WITH IBC 1010 FOR DOORS FOR POWER DOOR LEAF OPERATION. GATES DO NOT FUNCTION OR QUALIFY AS TURNSTILES PER 1010.3.

- SHEET NOTES**
- ALL ELECTRICAL WORK INCLUDING DATA AND POWER DISCONNECTION BY GC.
 - REMOVAL AND REINSTALLATION OF POWER POLES BY GC. INSTALLATION OF NEW POWER POLES BY GC.
 - ALL REGISTERS TO BE REMOVED AND REINSTALLED OR INSTALLED NEW BY WALMART.
 - GENERAL CONTRACTOR RESPONSIBLE FOR ALL ELECTRICAL WORK.
 - GENERAL CONTRACTOR RESPONSIBLE FOR ANCHORS AND ALL GONDOLA ANCHORAGE.
 - GENERAL CONTRACTOR TO REPAIR FLOOR AS REQUIRED AT LOCATIONS OF REMOVED REGISTERS AND FIXTURES.
 - GENERAL CONTRACTOR TO REFER TO FIXTURE ANCHORAGE PLAN FOR ANCHORAGE REQUIREMENTS.
 - GENERAL CONTRACTOR TO ACCESS GENERAL CONTRACTOR PERMIT INFORMATION FOLDER ON WORKSPACE FOR GRID WALL INSTALLATION INSTRUCTIONS.
 - GENERAL CONTRACTOR TO INSTALL RAILING PER MANUFACTURER'S RECOMMENDATIONS AND INSTRUCTIONS FOR INSTALLATION AND ANCHORING.
 - CAULK BARS AND ALL CHECKOUTS TO FLOOR WHEN LOCATED PERMITTED.
- GATE NOTES**
- GATES REQUIRE 5 PSF MAXIMUM OVERRIDE FORCE WHICH IN THE DIRECTION OF BUILDING EGRESS. STORAGE IN CONTRASTING COLORS TO THE BACKGROUND, TEXT TO READ "EMERGENCY EXIT ONLY PUSH TO OPEN".
 - ANCHORAGE: ALL FOUR ANCHORS ARE TO BE INSTALLED IN EACH GATE. DO NOT INSTALL ON TRANSITION STRIP.
 - THIRD PARTY TO CALIBRATE GATES. GENERAL CONTRACTOR TO LEAVE GATES IN SECURED OPEN POSITION AFTER INSTALLATION ZIP TIE OPEN LOOSELY. DO NOT OVERTIGHTEN.
 - AFTER CONSTRUCTION, DELIVER ALL GATE KEYS AND REMOTES TO STORE MANAGER AFTER INSTALLATION OF GATE. PROVIDE NAME OF MANAGER TO WHOM KEYS AND REMOTES WERE DELIVERED (BOTH THE THIRD PARTY CALIBRATION COMPANY AND WALMART CM). CONTACT THIRD PARTY TO COORDINATE GATE CALIBRATION.
 - THIRD PARTY CALIBRATION COMPANY: FRENCH COMPANY, LLC
1-805-624-2837
gates@frenchcompanyllc.com

SGA Design Group, c.
1437 South Boulder, Suite 600
Tulsa, Oklahoma 74119-3809
t. 918.587.8901
www.sga-designgroup.com

STIPULATION FOR REUSE:
THIS DRAWING AND ANY INFORMATION CONTAINED HEREIN IS THE PROPERTY OF SGA DESIGN GROUP, C. IT IS TO BE USED ONLY FOR THE PROJECT AND SITE SPECIFICALLY IDENTIFIED HEREIN. IT IS NOT TO BE REPRODUCED, COPIED, REUSED, OR TRANSMITTED IN ANY FORM OR BY ANY MEANS, ELECTRONIC OR MECHANICAL, INCLUDING PHOTOCOPYING, RECORDING, OR BY ANY INFORMATION STORAGE AND RETRIEVAL SYSTEM, WITHOUT THE WRITTEN PERMISSION OF SGA DESIGN GROUP, C.

CONSULTANTS:

Walmart
CAMDEN, SC
STORE NO: 0834-226
JOB NUMBER: 182011 | PHOTO: 172 PHOTO 5C

ISSUE BLOCK

NO.	DATE	DESCRIPTION

CHECKED BY: AVTRO
DRAWN BY: MR
PROTO CYCLE: 10/25/19
DOCUMENT DATE: 12/18/19

THIS REDUCED COPY OF THIS DRAWING IS ONLY AT THE OPTION OF THE USER. THE ORIGINAL DRAWING IS TO BE USED FOR THE PURPOSE OF CONSTRUCTION. THIS DRAWING SHALL NOT BE CONSIDERED FINAL OR COMPLETE UNLESS IT IS SIGNED AND SEALED BY THE PROFESSIONAL ENGINEER.

ENLARGED PLANS AND DETAILS

SHEET: **A5.4**