

COLOR LEGEND	
HIRC4	MATCH 5147019 GAUNTLET GRAY
P1E	SAFETY YELLOW
P21E	SAFETY RED
P35E	BLACK
P48E	DARK GRAY
P78U	WALMART BLUE (URETHANE-LIKE)
P134E	LIGHT GRAY
P135E	MEDIUM GRAY

SHEET NOTES	
1	POWER WASH 100% OF EXTERIOR WALLS PRIOR TO PAINTING
2	PATCH AND REPAIR EXTERIOR WALL SURFACES DAMAGED OR EXPOSED DUE TO REMOVAL OF BUILDING MOUNTED ITEMS. TO MATCH ADJACENT AS REQUIRED.
3	REMOVE SEALANT AND BACKER MATERIAL FROM ALL BUILDING CONTROL JOINTS AND EXPANSION JOINTS. FILL AND SEAL JOINTS. REF SPEC 07900
4	REFER TO DETAILS ON SHEET A2.1 FOR SUBSTRATE AND FINISH REQUIREMENTS AT LOCATIONS OF BUILDING MOUNTED SIGNS.
5	RESURFACE EXISTING EIFS WHERE SHOWN (HATCHED AREA)
6	NOT USED
7	PAINT EXTERIOR OF BUILDING AS SHOWN. PRIOR TO PAINTING WALL AT LOCATIONS OF LIT (DILDO) SIGNS. COORDINATE SCOPE OF WORK WITH WALMART CM
8	PAINT DOOR HOODS, HOLLOW METAL STEEL DOORS AND FRAMES, GUTTERS AND DOWNSPOUTS, EXPOSED METAL FLASHING, HANDRAILS, GAS LINES AND EXPOSED MISCELLANEOUS STEEL TO MATCH ADJACENT BUILDING COLOR (UN)
9	PAINT ALL FLASHINGS ON ROOF PPS. EXTEND PAINTING OF GAS LINE TO SIDE WALLS TO GRADE OR NEARBY TO NOT LESS THAN 1' METER OR VALVES TO MATCH ADJACENT WALL
10	DO NOT USE ON JOB BOOM. USE ON HANDRAILS
11	DO NOT PAINT SPRINKLER VALVES (P21E). DO NOT PAINT SIGHT GLASS OR FIRE ALARM BELL
12	PAINT ALL EXTERIOR BOLLARDS TO MATCH EXISTING COLOR UNLESS NOTED TO RECEIVE PLASTIC BOLLARD SLEEVES
13	DO NOT PAINT LED WALL PACK HOUSINGS
14	NOT USED
15	NOT USED
16	NOT USED
17	NOT USED
18	NOT USED
19	NOT USED
20	REPLACE ALL DAMAGED AND MISSING PRE-MOLDED CLOSURE STRIPS AT METAL CANOPIES INCLUDING AT EXISTING LIGHT FIXTURES

SGA Design Group
 1437 South Boulder, Suite 600
 Tulsa, Oklahoma 74133-3609
 T. 918.881.8901
 F. 918.881.8901
 www.sgadesigngroup.com

STIPULATION FOR REUSE: THIS DRAWING AND ANY INFORMATION THEREON, INCLUDING BUT NOT LIMITED TO, DESIGN CONCEPTS, MATERIALS, METHODS, AND SPECIFICATIONS, ARE THE PROPERTY OF SGA DESIGN GROUP AND ARE NOT TO BE REPRODUCED OR TRANSMITTED IN ANY FORM OR BY ANY MEANS, ELECTRONIC OR MECHANICAL, INCLUDING PHOTOCOPYING, RECORDING, OR BY ANY INFORMATION STORAGE AND RETRIEVAL SYSTEM, WITHOUT THE WRITTEN PERMISSION OF SGA DESIGN GROUP.

CONSULTANTS:

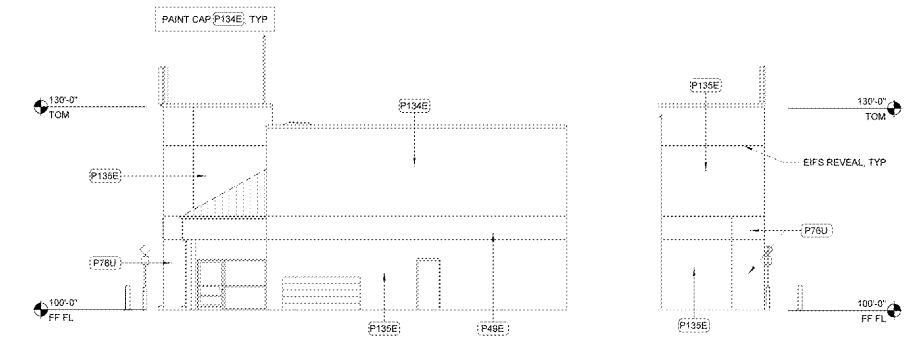
Walmart
 CAMDEN, SC
 STORE NO: 0834-226
 172 PROTO 5C
 1820111 | PHOTO | ISSUE BLOCK

ISSUE BLOCK	

CHECKED BY: AVTRO
 DRAWN BY: MR
 PHOTO CYCLE: 1025/19
 DOCUMENT DATE: 12/18/19

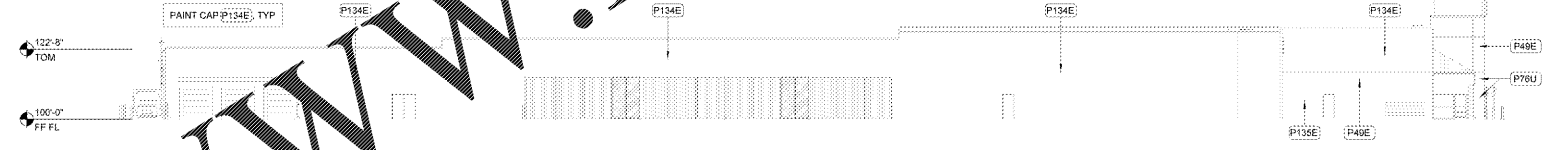
THE REDUCED COPY OF THIS DRAWING IS TO BE USED AT THE OFFICES OF SGA DESIGN GROUP. THIS ELECTRONIC DOCUMENT IS PROVIDED FOR THE PURPOSES OF CONVENIENCE ONLY AND IS NOT TO BE USED FOR THE PURPOSES OF CONSTRUCTION, RECORDS, OR AS A BASIS FOR LEGAL ACTION. THE ORIGINAL DRAWING SHALL NOT BE CONSIDERED FINAL OR VALID UNLESS IT IS SIGNED AND SEALED BY THE ARCHITECT.

EXTERIOR ELEVATIONS
 SHEET: **A2**

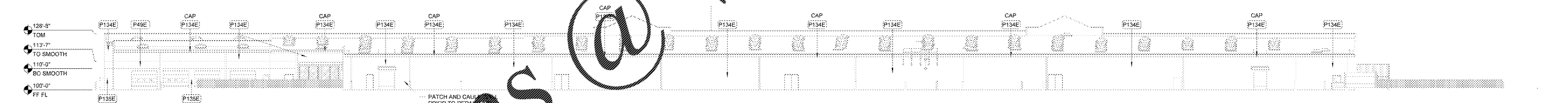


8 VESTIBULE SIDE ELEVATION
 1" = 10'-0"

7 VESTIBULE SIDE ELEVATION
 1" = 10'-0"



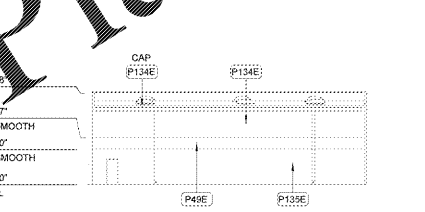
6 LEFT ELEVATION
 1" = 10'-0"



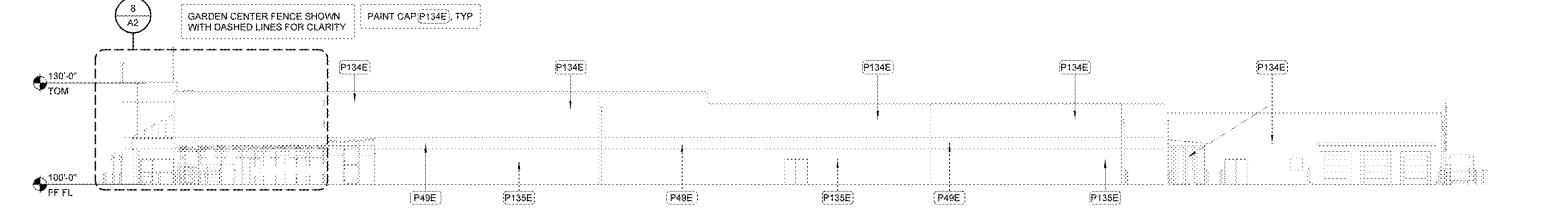
5 REAR ELEVATION
 1" = 20'-0"



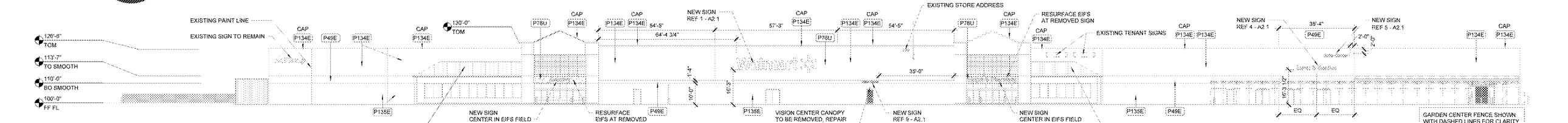
4 AUTO CENTER FRONT ELEVATION
 1" = 20'-0"



3 SEASONAL SHOP REAR ELEVATION
 1" = 20'-0"



2 RIGHT ELEVATION
 1" = 20'-0"



1 FRONT ELEVATION
 1" = 20'-0"

www.LDILine.com

Order Plans @

1925 11/22/2019 10:56 AM V:\Projects\20190102\20190102.dwg