

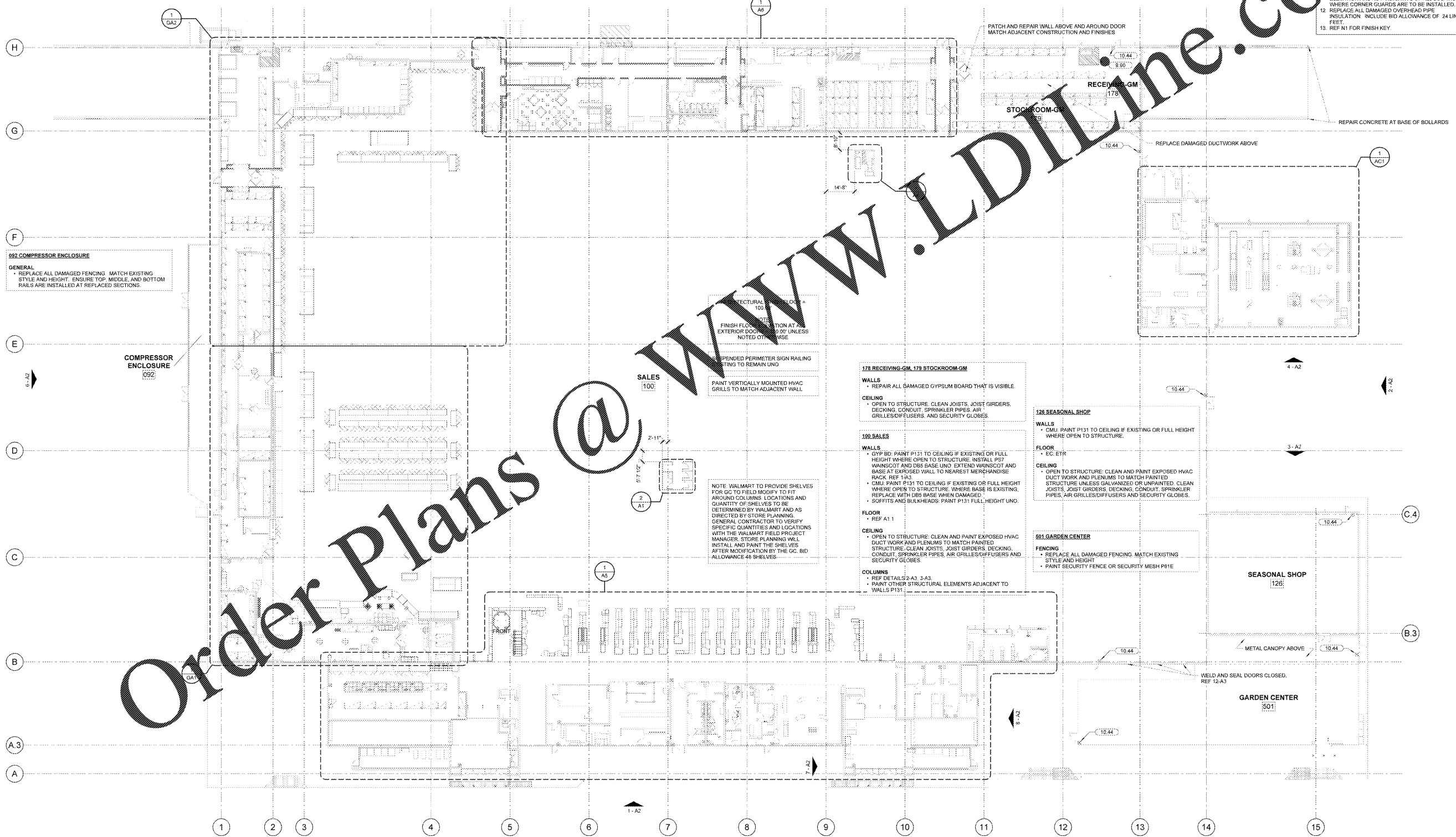
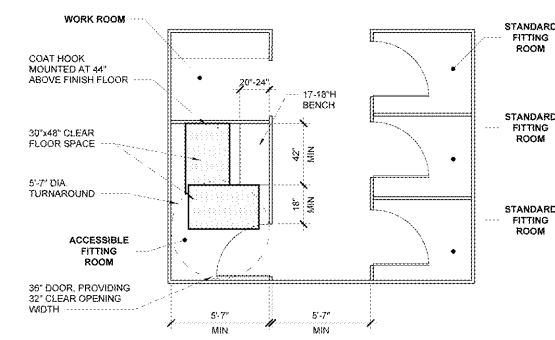
**KEYNOTES**

- 9.90 FLOOR STRIPES: REF M1 FOR STRIPING CONDITIONS.
- 10.44 PROVIDE TACTILE "EXIT" SIGN REF AB.

**SHEET NOTES**

1. ENSURE ALL EXISTING WALL STANDARDS AND HALF GONDOLAS TO REMAIN ARE SECURE TO WALL.
2. NOT USED.
3. REFER TO RACK ANCHORAGE PLAN FOR STEEL RACK AND/OR GONDOLA SHELVING FIXTURE ANCHORING REQUIREMENTS.
4. REPLACE ALL EXISTING ADJUSTABLE TUBE COUNTER SUPPORTS THROUGHOUT THE STORE. REF 1-A9 FOR NEW SUPPORTS AND SPACING.
5. REMOVE EXISTING CALK AT MOP SINKS AND RE-CALK PER MANUFACTURER'S RECOMMENDATION.
6. REMOVE, RELOCATE AND/OR INSTALL PREFABRICATED CASH WRAPS (S) FOR CHECKOUTS PER STORE PLANNING FIELD PROJECT MANAGER. CALK BASE TO FLOOR WHEN LOCATION IS FINALIZED. INCLUDE BID ALLOWANCE FOR RELOCATION OF 2 CASHWRAPS.
7. REFER TO SPEC SECTION 01500 FOR DETAILS AND REQUIREMENTS FOR STORMWATER POLLUTION CONTROLS AND SITE STORAGE OF MATERIALS AND EQUIPMENT. DEVIATION(S) FROM DETAILS SHOWN MUST BE SUBMITTED FOR APPROVAL IN ACCORDANCE WITH SPEC SECTION 01330.
8. INSTALL NEW FITTING ROOMS. SPOT REPLACE OR REPAIR FLOOR FINISH TO FLOOR REF 2-A1 FOR CRACKS.
9. PATCH AND REPAIR WALL ABOVE AND AROUND DOOR. MATCH ADJACENT CONSTRUCTION AND FINISHES.
10. REPAIR CONCRETE AT BASE OF BOLLARDS.
11. REPLACE DAMAGED DUCTWORK ABOVE.
12. WELD AND SEAL DOORS CLOSED. REF 12-A3.
13. REF M1 FOR FINISH KEY.

**2 FITTING ROOM PLAN (4-BAY ANSI/ADA)**  
1/4" = 1'-0"



**1 FLOOR PLAN**  
1" = 20'-0"

**SGA Design Group, Inc.**  
1437 South Boulder, Suite 600  
Tulsa, Oklahoma 74119-3609  
T: 918.587.8901  
www.sga-design.com

**STIPULATION FOR REUSE**  
THIS DRAWING AND ANY INFORMATION CONTAINED HEREIN IS THE PROPERTY OF SGA DESIGN GROUP, INC. IT IS TO BE USED ONLY FOR THE PROJECT AND SITE SPECIFICALLY IDENTIFIED HEREIN. IT IS NOT TO BE REPRODUCED, COPIED, REUSED, OR TRANSMITTED IN ANY FORM OR BY ANY MEANS, ELECTRONIC OR MECHANICAL, INCLUDING PHOTOCOPYING, RECORDING, OR BY ANY INFORMATION STORAGE AND RETRIEVAL SYSTEM, WITHOUT THE WRITTEN PERMISSION OF SGA DESIGN GROUP, INC.

**CONSULTANTS**

**Walmart**  
**CAMDEN, SC**  
STORE NO: 0634-226  
172 PRINTED SC  
JOB NUMBER: 182011 | PROJECT: 172 PRINTED SC  
2020 GENERAL REMODEL

**ISSUE BLOCK**

NO.	DATE	DESCRIPTION

CHECKED BY: AVTRO  
DRAWN BY: MR  
PROTO CYCLE: 10/25/19  
DOCUMENT DATE: 12/18/19

THE REDUCED COPY OF THIS DRAWING IS ONLY FOR THE PURPOSES OF SGA DESIGN GROUP, INC. IT IS NOT TO BE USED FOR ANY OTHER PURPOSES. THIS DRAWING IS THE PROPERTY OF SGA DESIGN GROUP, INC. IT IS TO BE USED ONLY FOR THE PROJECT AND SITE SPECIFICALLY IDENTIFIED HEREIN. IT IS NOT TO BE REPRODUCED, COPIED, REUSED, OR TRANSMITTED IN ANY FORM OR BY ANY MEANS, ELECTRONIC OR MECHANICAL, INCLUDING PHOTOCOPYING, RECORDING, OR BY ANY INFORMATION STORAGE AND RETRIEVAL SYSTEM, WITHOUT THE WRITTEN PERMISSION OF SGA DESIGN GROUP, INC.

**FLOOR PLAN**

SHEET: **A1**

Order Plans @ [www.LDLine.com](http://www.LDLine.com)