

ELECTRICAL KEYED NOTES

- 1 MOUNT SHOW WINDOW RECEPTACLE IN THE SOFFIT ABOVE WINDOW CONTROL BY SWITCH IN MANAGERS OFFICE.
- 2 NOT USED
- 3 POWER AND DATA STUB-UPS UNDER SALES COUNTERS. PROVIDE 1 1/2" C. TO COMMUNICATION ROOM UNDER SALES. PROVIDE SEPARATE BOXES FOR POWER AND DATA WITH PLASTIC OR ALUMINUM COVERS. SEE ARCHITECTURAL EQUIPMENT PLAN ON SHEET E-2.1 FOR EXACT DIMENSIONS.
- 4 CONNECT EXHAUST FAN WITH CIRCUIT SERVING LIGHT FIXTURES IN TOILET ROOMS. FAN TO BE CONTROLLED VIA TOILET OCCUPANCY SENSOR SUCH THAT IF EITHER TOILET ROOM IS OCCUPIED THE FAN WILL RUN. REFER TO DETAIL SHEET E-3 FOR DETAIL #7.
- 5 COORDINATE EXACT MOUNTING HEIGHT WITH ARCHITECTURAL DRAWINGS.
- 6 SEE LIGHT MOUNTING DIAGRAM ON SEE SHEET E3 DETAIL #1.
- 7 MOUNT SIMPLEX RECEPTACLE FOR FAN AT +92" A.F.F. SWITCH TO BE MOUNTED AT 48" A.F.F.
- 8 REFER TO AIR COMPRESSOR WIRING DETAIL ON SHEET E-3 FOR DISCONNECT REQUIREMENTS.
- 9 PROVIDE L6-20R OUTLET FOR TIRE CHANGER.
- 10 PROVIDE L6-20R OUTLET FOR WHEEL BALANCER.
- 11 RECEPTACLE TO BE MOUNTED ABOVE COUNTER FOR MICROWAVE.
- 12 PROVIDE GFCI BREAKER FOR REFRIGERATOR.
- 13 INSTALL AND CONNECT DUCT SMOKE DETECTOR FOR RTU-1 IN RETURN AIR DUCT. PROVIDE REMOTE TEST SWITCH WITH AUDIBLE AND VISUAL INDICATORS. MOUNT HIGH ON WALL BELOW CEILING. PROVIDE PERMANENT LABEL IN OFFICE.
- 14 RTU-1: 208V/3Ø 55 MCA/60A MOCB. PROVIDE 3/4" C. 3#6 CU W/1#10 GND. ELECTRICAL CONTRACTOR TO MAKE CONNECTION TO NON FUSED DISCONNECT SWITCH AT UNIT. DUCT SMOKE DETECTOR IN RETURN DUCT AND CONVENIENCE RECEPTACLE AT UNIT.
- 15 PROVIDE CONNECTION TO 208 VOLT, 3 PHASE INSTANTANEOUS WATER HEATER. PROVIDE 1" C. 3#6 CU W/1#10 GND. WATER HEATER BY MECHANICAL CONTRACTOR, ELECTRICAL CONTRACTOR TO MAKE FINAL CONNECTIONS. FIELD VERIFY LOCATION PRIOR TO INSTALLATION.
- 16 SERVICE DISCONNECT, CT CABINET AND METER. REFER TO ONE LINE DIAGRAM ON SHEET E-5.
- 17 (2) 4" EMPTY CONDUITS TO TELEPHONE SERVICE POINT. COORDINATE FINAL SIZE AND LOCATION IN FIELD WITH TIRE KINGDOM CONSTRUCTION MANAGER PRIOR TO INSTALLATION. PHONE LINES AND DEMARCATION SHOULD TERMINATE IN COMMUNICATION CLOSET. COORDINATE WITH PHONE COMPANY TO BRING IN 25 PAIR PHONE SERVICE.
- 18 INTERLOCK EF-1 AND IH-1 MOTORIZED DAMPER SUCH THAT DAMPER OPENS WHEN EF-1 RUNS.
- 19 CONDUIT SHALL BE ROUTED 6" BELOW THE FRAME ASSEMBLY MIN.
- 20 RECEPTACLE OUTLET FOR ALIGNMENT COMPUTER TO HAVE 900mA BATTERY BACK-UP.
- 21 CONNECT TO IN-LINE EF-2 ABOVE CEILING. WIRE THERMOSTAT FOR CONTROL.
- 22 ALL ELECTRICAL RECEPTABLES, DEVICES, DISCONNECTS, ETC. SHALL BE MOUNTED AT 48" A.F.F. UNLESS NOTED OTHERWISE IN BAY SERVICE AREA.
- 23 SWITCH FOR SHOW WINDOW RECEPTABLES ABOVE WINDOW.
- 24 SATELLITE DISH CABLE ENTRANCE. VERIFY LOCATION WITH ARCHITECTURAL PLANS. DISH MOUNTED TO TOWER WALL. RUN CABLE TO TV/COFFEE CABINET. CONDUIT FOR THE SATELLITE DISH TO BE 1 1/2" GOOSENECK. COORDINATE ROUTING WITH ARCHITECT AND OWNER PRIOR TO INSTALLATION.
- 25 CCTV CAMERA BY SECURITY VENDOR. PROVIDE ELECTRICAL STUB UPS AND J-BOX(ES) AS REQUIRED. REFER TO DETAILS ON SHEET E4 FOR REQUIREMENTS AND MOUNTING HEIGHTS. VERIFY EXACT LOCATION WITH SECURITY VENDOR AND TIRE KINGDOM PROJECT MANAGER.
- 26 CCTV EQUIPMENT CABINET BY SECURITY VENDOR. REFER TO DETAIL ON SHEET E4 FOR ELECTRICAL REQUIREMENTS AND MOUNTING HEIGHTS. VERIFY EXACT LOCATION WITH SECURITY VENDOR AND TIRE KINGDOM PROJECT MANAGER.
- 27 PROVIDE J-BOX FOR CCTV EQUIPMENT. COORDINATE WITH FURNITURE LOCATION. J-BOX IS INTENDED TO PASS THROUGH KEYBOARD/MOUSE CABLES TO MANAGER'S DESK FROM VIDEO EQUIPMENT CABINET AND MUST BE ACCESSIBLE WHEN FURNITURE IS INSTALLED. REFER TO CCTV EQUIPMENT CABINET DETAIL ON SHEET E4.
- 28 (2) 1-1/2" PVC TO QUICK-CHECK COMPUTER CONDUITS OR PLENUM RATED CABLE UNTIL THEY ENTER THE GARAGE. USE SHORTEST ROUTE POSSIBLE. HDMI CANNOT EXTEND MORE THAN 50'-0" W/O BOOSTER.
- 29 WALL MOUNTED ULTRASONIC OCCUPANCY SENSOR, USE WATT-STOPPER: #JW-100 OR EQUAL FOR CONTROL OF RECEPTACLE. RECEPTACLE WITH "CR" LABEL TO BE CONTROLLED RECEPTABLES ALL OTHER RECEPTABLES WITHOUT THE "CR" TO BE UNCONTROLLED IN THIS AREA.
- 30 UNIT IS SHIPPED WITH AN IN-GROUND CONTROL BOX. THESE UNITS MAY HAVE THE CONDUIT ROUTED THROUGH ANY OF THE SUBSTRUCTURE WALL.
- 31 INTERLOCK EF-4 AND IH-2 MOTORIZED DAMPER SUCH THAT DAMPER OPENS WHEN EF-4 RUNS.
- 32 ROUTE AIR DRYER THRU EMS RELAY. SEE EMS DETAIL ON SHEET E-3.
- 33 LEVITON EMS RELAYS AND WIREWAY. MOUNT ADJACENT TO PANELS. SEE EMS NOTES ON SHEET E-3.
- 34 PROVIDE HOFFMAN DG19 GROUND BAR KIT MOUNTED ON STAND-OFFS. LOCATED AS DIRECTED BY TBC PROJECT MANAGER. SEE DRAWING E-3 FOR DETAIL.
- 35 TO COMMUNICATIONS CLOSET.

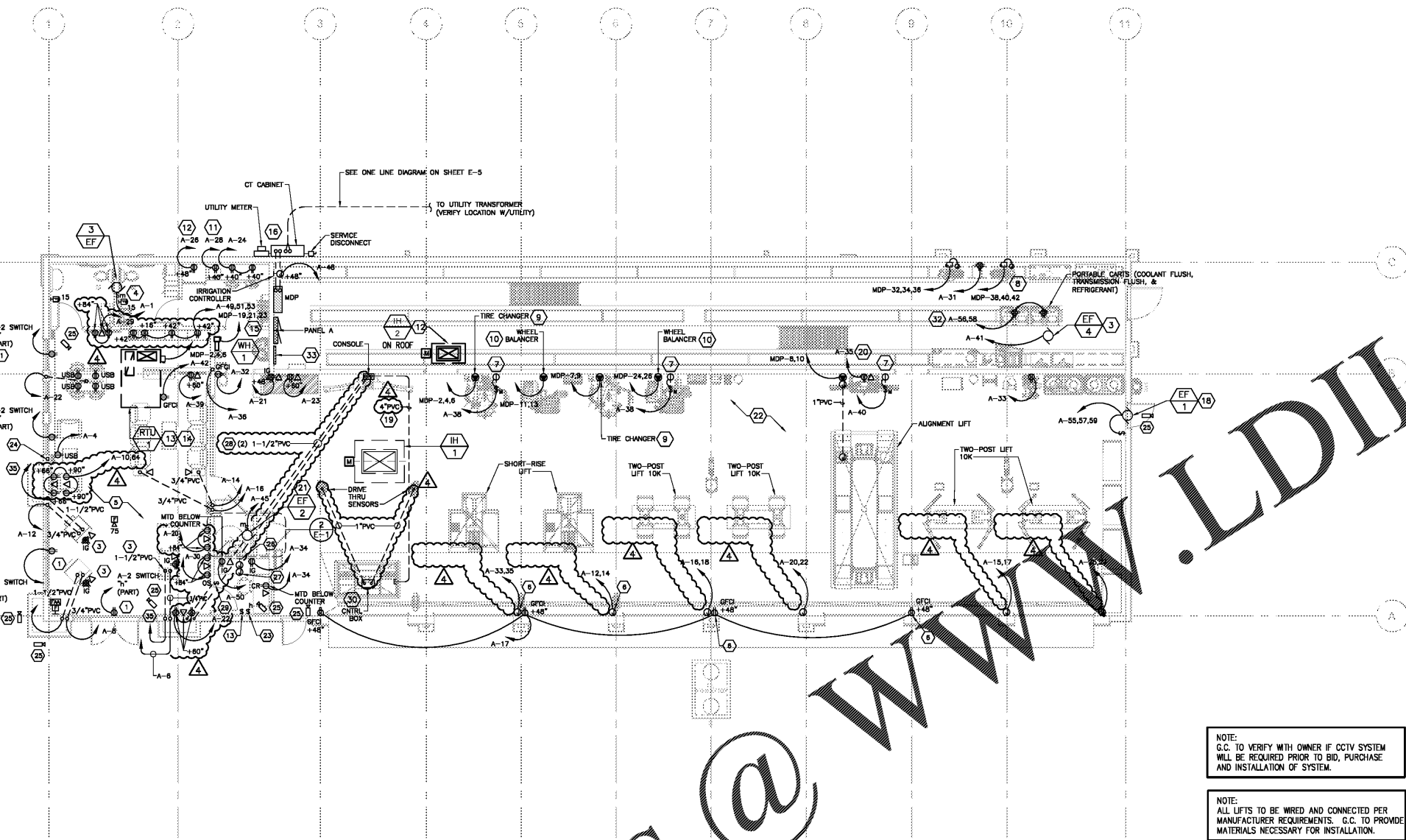
GENERAL NOTES

- A. ALL DEVICES SHALL BE CIRCUITED TO PANEL A UNLESS NOTED OTHERWISE.
- B. RECEPTABLES AND DISCONNECTS IN SERVICE BAY AND TIRE STORAGE SHALL BE 48" A.F.F. UNLESS NOTED OTHERWISE.
- C. THE CONTRACTOR FOR THIS WORK IS REQUIRED TO READ THE SPECIFICATIONS AND REVIEW DRAWINGS OF ALL DIVISIONS OF WORK AND IS RESPONSIBLE FOR THE COORDINATION OF THIS WORK AND THE WORK OF ALL OTHER SUBCONTRACTORS WITH ALL DIVISIONS OF WORK.
- D. ELECTRICAL CONTRACTOR IS TO FURNISH AND INSTALL TYPE WRITTEN PANEL DIRECTORIES IN ALL PANELS.
- E. NO HANGERS, SUPPORTS, JUNCTION BOXES, ETC. SHALL BE ATTACHED TO ROOF DECK.
- F. ELECTRICAL CONTRACTOR SHALL MAKE ALL FINAL CONNECTIONS AS REQUIRED FOR A FULLY COMPLETE AND OPERABLE SYSTEM.
- G. ELECTRICAL CONTRACTOR IS NOT TO SHARE THE NEUTRAL CONDUCTOR OF A CIRCUIT CONTAINING A 'GFCI' DEVICE WITH ANY OTHER CIRCUIT.
- H. FIELD VERIFY EXACT LOCATION AND ELECTRICAL REQUIREMENTS OF ALL HVAC EQUIPMENT WITH MECHANICAL CONTRACTOR PRIOR TO ORDERING RELATED ELECTRICAL EQUIPMENT.
- I. ALL 15A. & 20A. 120V. DUPLEX RECEPTABLES LOCATED IN SERVICE AREA AND TIRE STORAGE SHALL BE GFCI PROTECTED.
- J. CONDUIT, RECEPTABLES, LIGHTS, ETC. AND OTHER ELECTRICAL ITEMS SHALL NOT INTERFERE WITH TIRE STORAGE RACKS. ROUTE CONDUIT IN JOIST SPACE. MC CABLE IS ALLOWED WHERE APPROVED BY LOCAL INSPECTOR.
- K. PROVIDE ROUGH-IN ONLY FOR FIRE ALARM AND SECURITY DEVICES. COORDINATE LOCATIONS AND REQUIREMENTS WITH VENDOR AND TIRE KINGDOM PROJECT MANAGER.
- L. ELECTRICAL CONTRACTOR IS TO FURNISH AND INSTALL A POLY PULL STRING IN ALL EMPTY CONDUITS FOR FUTURE USE. SECURE PULL STRING AT BOTH ENDS OF CONDUIT.

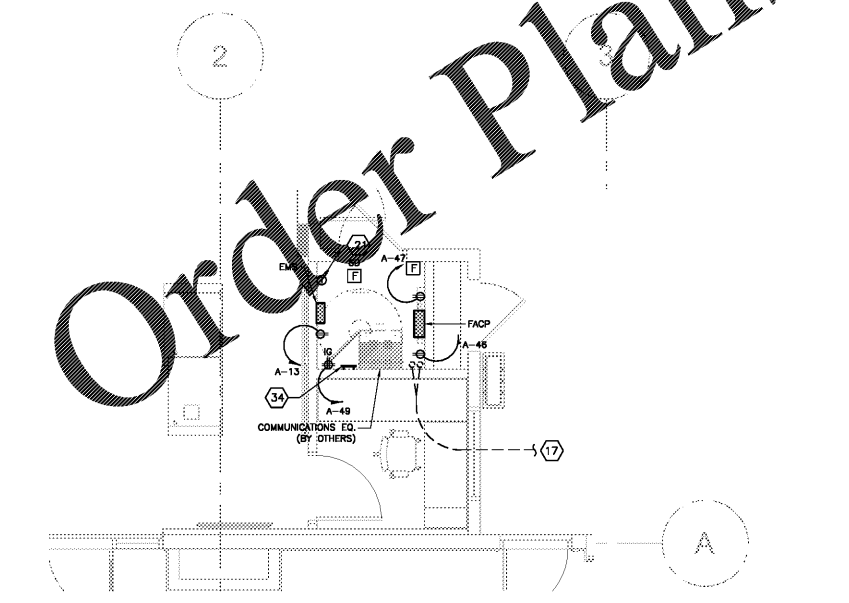
NOTE:
G.C. TO VERIFY WITH OWNER IF CCTV SYSTEM WILL BE REQUIRED PRIOR TO BID, PURCHASE AND INSTALLATION OF SYSTEM.

NOTE:
ALL LIFTS TO BE WIRED AND CONNECTED PER MANUFACTURER REQUIREMENTS. G.C. TO PROVIDE MATERIALS NECESSARY FOR INSTALLATION.

ALL 120V, 15 AND 20A RECEPTABLES LOCATED IN SERVICE BAY SHALL BE GFCI PROTECTED & MOUNTED AT 48" AFF UNO.



1 POWER PLAN
1/8"=1'-0"



2 COMMUNICATIONS CLOSET POWER & DATA
1/4"=1'-0"

Order Plans @ WWW.LDILLINE.COM

