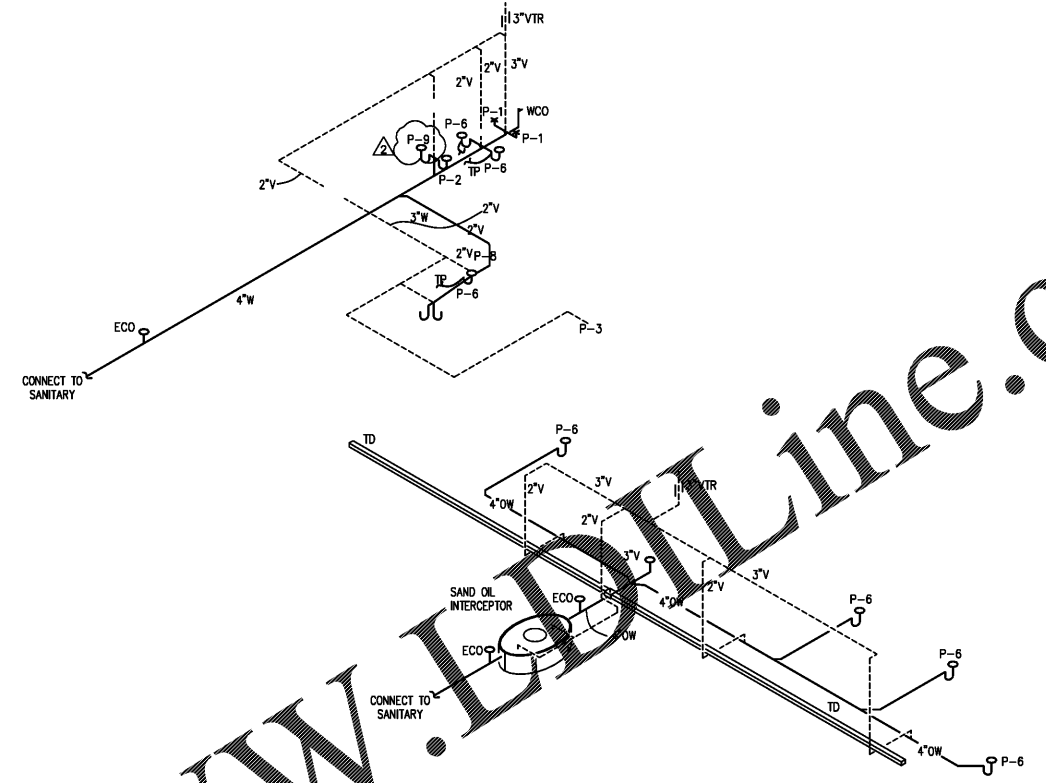
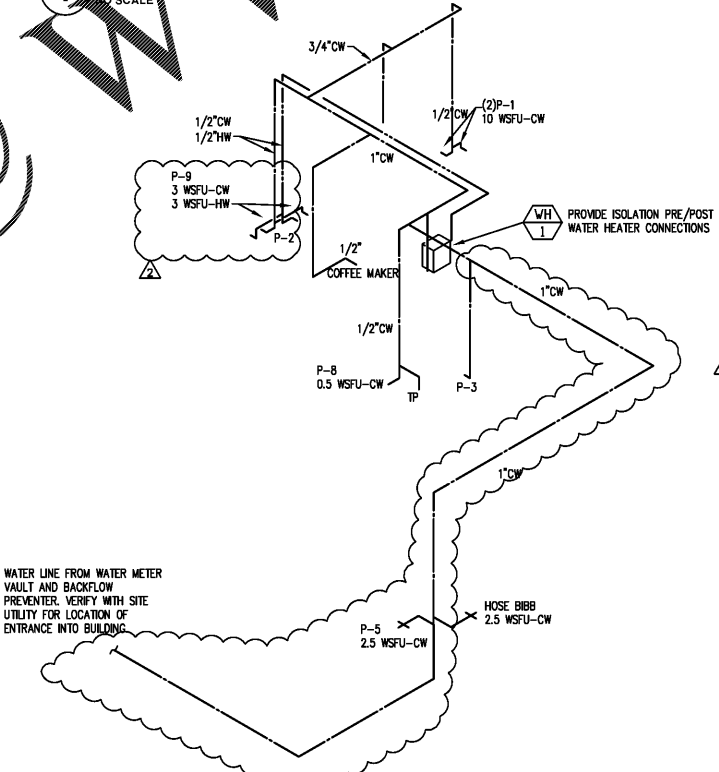


UNIT	DESCRIPTION	LOCAL CONNECTIONS				MOUNTING HEIGHT (IN)	NOTES
		WASTE (IN)	VENT (IN)	CW (IN)	HW (IN)		
P-1	SLOAN 8029-8110 RH/8010 LH - FLUSH TANK PRESSURE ASSIST WATER CLOSET WITH CHURCH #9500C - WHITE, OPEN FRONT SEAT.	4"	2"	1/2"	-	FLOOR	1,2,3,6
P-2	AMERICAN STANDARD #0356.421 - LAVATORY WITH AMERICAN STANDARD #1340.109 - METERING FAUCET WITH 0.17 GALLONS PER 10 SECOND CYCLE.	2"	2"	1/2"	1/2"	36"	1,4,5
P-3	BRADLEY WF2703-TMA: ONE-PIECE PRESSING OF 14-GAUGE STAINLESS STEEL WITH A #4 POLISHED FINISH. PEDESTAL CHROMATE PLATED 14 GAUGE STEEL.	2"	2"	1/2"	1/2"	NOTE 2	1,2,3,8
P-4	HAWS 7261-7271 - PEDESTAL EYEWASH STATION WITH PADDLE HANDLE ACTIVATION. PROVIDE HAWS #9102 - DUST COVER.	-	-	1/2"	-		
P-5	WOODFORD B65 - RECESSED BOX AND LOCABLE DOOR, ASSE STANDARD 1019-B APPROVED. ANTI-SIPHON VACUUM BREAKER, 3/4" MALE HOSE THREAD.	-	-	3/4"	-	36"	4
P-6	ZURN MODEL ZN415B-V, ROUND FLOOR DRAIN WITH CAST IRON BODY, BOTTOM OUTLET, BACKWATER VALVE, POLISHED NICKEL BRONZE GRATE.	3" - 4"	SEE RISER	-	-	FLOOR	
P-7	PROVIDE QUARTER TURN WATER OUTLET WITH WATER HAMMER ARRESTOR, 5/8" CONNECTION.			1/2"			
P-8	OASIS # PGBACSL - BI-LEVEL ELECTRIC WATER COOLER.	2"	2"	1/2"	-	36"	1,4,8
P-9	WASH STATION - BRADLEY VERGE I LVSD1-TMV	2"	2"	1/2"	1/2"	SEE ARCH.	9
TD	ZURN MODEL Z-886-HD-DGE - 6" WIDE TRENCH DRAIN, 80"x 6-1/4" SECTIONS, CHANNELS MADE OF HIGH DENSITY POLYETHYLENE, DUCTILE IRON GRATING	4"	2"	-	-	FLOOR	
CB	ZURN MODEL Z-887-HD-DGE-Y - 6" WIDE CATCH BASIN, 20"x 6-1/4" SECTION, MADE OF HIGH DENSITY POLYETHYLENE, DUCTILE IRON GRATING	4"	2"	-	-	SUB-FLOOR	
WHA	WILKINS MODEL 1250 - WATER HAMMER ARRESTOR PROVIDED AS DETERMINED BY SITE CONDITIONS.	-	-	-	-		
FCO	ZURN MODEL Z-1400 - ADJUSTABLE FLOOR CLEANOUT, CAST IRON BODY WITH GAS AND WATER TIGHT ABS TAPERED THREAD PLUG AND ROUND DURA-COATED CAST IRON TOP.	4"	-	-	-	FLOOR	
WCO	ZURN MODEL ZN-1447-BP - CAST IRON CLEANOUT TEE WITH 9"x9" SS ACCESS COVER & GAS TIGHT BRONZE PLUG	4"	-	-	-	24"	6
TP	JOSAM #88250 - TRAP PRIMER VALVE WITH INTEGRAL VACUUM BREAKER. MOUNT ABOVE CEILING IN ACCESSIBLE LOCATION. COORDINATE WITH AHJ PRIOR TO INSTALL.	-	-	1/2"	-	ABOVE CEILING	4

- NOTES:
- ADA APPROVED.
  - SIDE TRIP LEVER SHALL BE LOCATED ON THE OPEN SIDE OF THE TOILET AWAY FROM THE WALL IN COMPLIANCE WITH ADA STANDARDS. (MODEL #2002.014 FOR LEFT SIDE TRIP LEVER; #2002.804 FOR RIGHT SIDE)
  - CAULK FIXTURE TO FLOOR WITH CLEAR SILICONE.
  - COORDINATE MOUNTING HEIGHT WITH ARCHITECT.
  - TIGHT FITTING TRAP AND SUPPLY PIPE WRAP - PLUMBEREX PRO EXTREME OR EQUAL.
  - PROVIDE 4" WALL CLEANOUT OFF WASTE BRANCH SERVING WATER CLOSET.
  - PROVIDE HANDLE WITH COLOR CODED INDICATOR FOR HOT AND COLD WATER.
  - COORDINATE LOCATION & ADDITIONAL REQUIREMENTS WITH ARCHITECTURAL.



**1 SANITARY RISER**  
NO SCALE



**2 WATER RISER**  
NO SCALE

WATER HEATER - TANKLESS ELECTRIC SCHEDULE											
UNIT	MANUFACTURER	MODEL	EHT (°F)	LWT (°F)	MIN. ACTIVATION (GPM)	DELIVERY (GPM)	EFFICIENCY	ELEC DATA			NOTES
								KW	VOLT	AMPS	
WH-1	EEMAX	EX240T2T	62	110	0.70	4.20	99.80%	24	208	67	1,2

- NOTES:
- PROVIDE APPROVED PRESSURE RELIEF VALVE AND EXPANSION TANK IF REQUIRED BY CODE.
  - PLUMBING CONTRACTOR TO ENSURE ALL FAUCETS DOWNSTREAM HAVE LARGER GPM RATE THAN "MIN. ACTIVATION (GPM)" COLUMN ABOVE.

REDUCED PRESSURE BACKFLOW PREVENTER SCHEDULE						
DESIGNATION	MANUFACTURER	MODEL	QUANTITY	SERVING	SIZE	NOTES
RFBP-1	WATTS	LF909M1	1	DOMESTIC WATER	SEE RISER	ALL

- NOTES:
- MOUNT ON EXTERIOR OF BUILDING ABOVE GROUND. COORDINATE EXACT LOCATION WITH WATER UTILITY.

PLUMBING PIPING LEGEND	
---	COLD WATER
---	120 DEGREE HOT WATER
---	CIRCULATING HOT WATER
---	VENT
---	140 DEGREE HOT WATER
SW	SANITARY WASTE
GW	GREASE WASTE
G	GAS LINE
A	AIR LINE
⊙	CONNECT TO EXISTING
---	EXISTING COLD WATER
---	EXISTING 120 DEGREE HOT WATER
---	EXISTING 140 DEGREE HOT WATER
SW	EXISTING SANITARY WASTE
GW	EXISTING GREASE WASTE
G	EXISTING GAS LINE

Order Plans @

