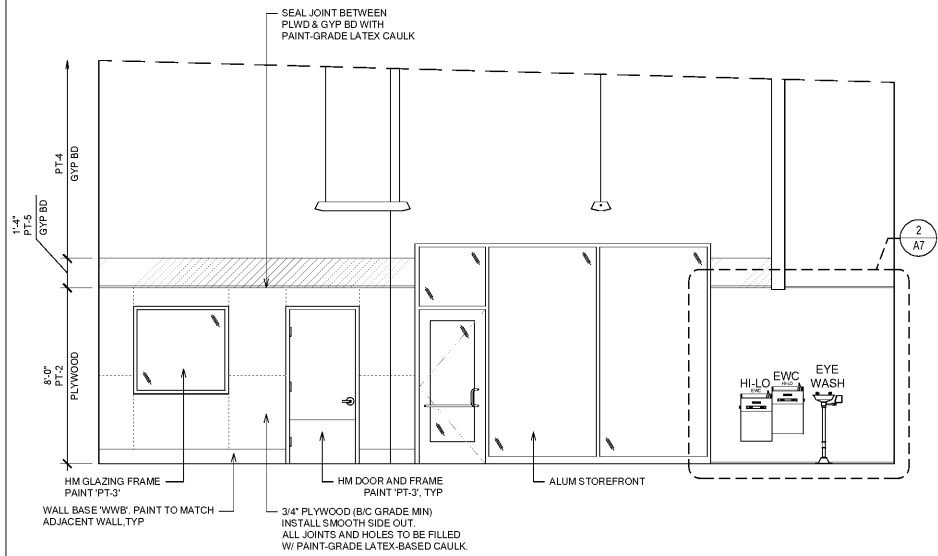
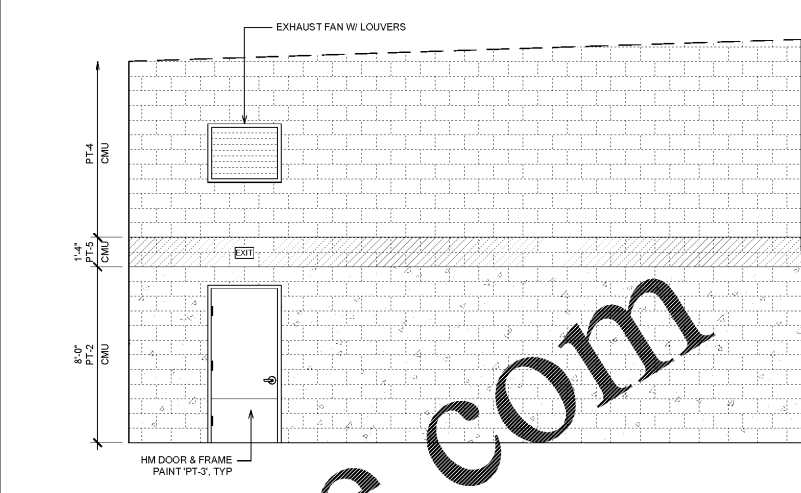


NOTE:  
 1. CHAIN TENSIONERS TO BE FLOOR-MOUNTED.  
 2. ELECTRICAL RECEPTACLES TO BE MOUNTED @ 50" A.F.F.

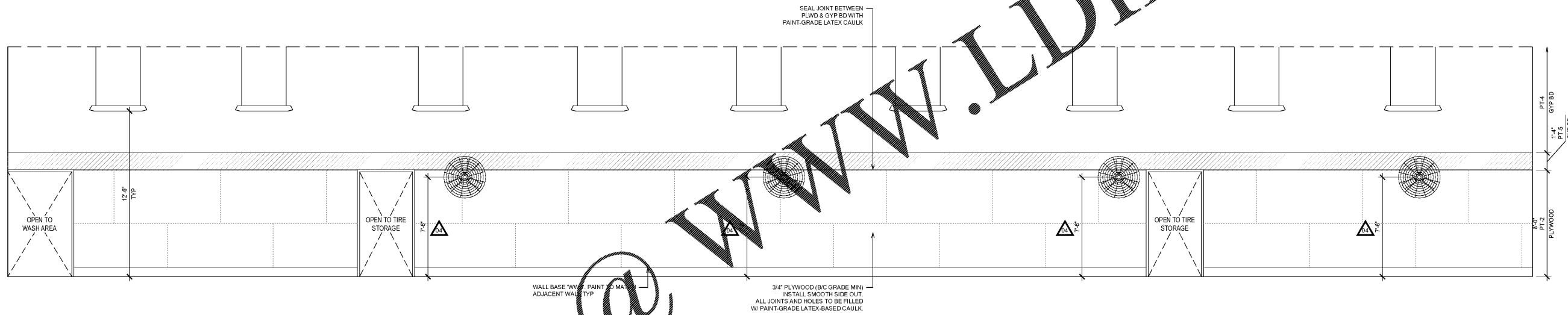
**5 OH DOOR PILASTER DETAIL**  
 SEE ALSO ELECTRICAL / MECHANICAL 1/2" = 1'-0"



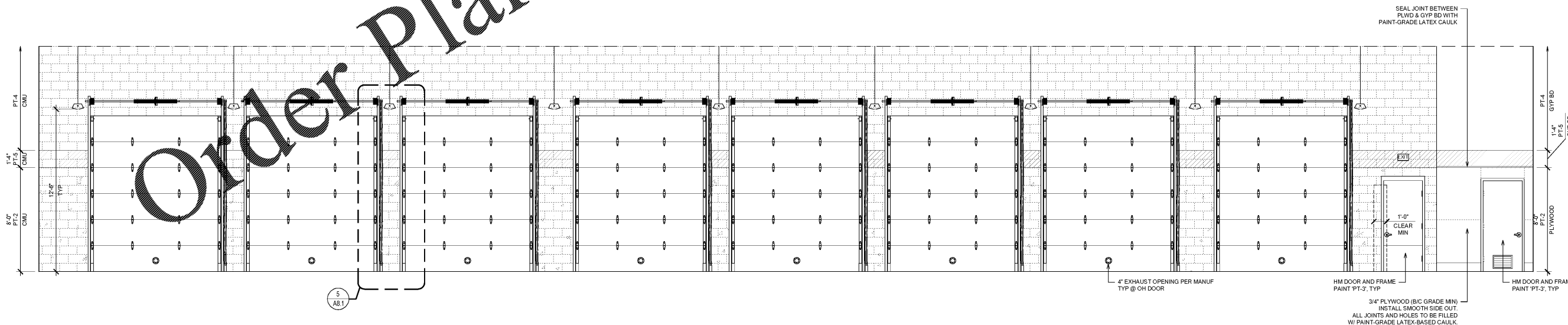
**4 SERVICE GARAGE - WEST**  
 SEE ROOM FINISH SCHEDULE FOR FINISHES 1/4" = 1'-0"



**3 SERVICE GARAGE - EAST**  
 SEE ROOM FINISH SCHEDULE FOR FINISHES 1/4" = 1'-0"



**2 SERVICE GARAGE - NORTH**  
 SEE ROOM FINISH SCHEDULE FOR FINISHES 1/4" = 1'-0"



**1 SERVICE GARAGE - SOUTH**  
 SEE ROOM FINISH SCHEDULE FOR FINISHES 1/4" = 1'-0"



15 Ninth Avenue North, Hopkins, MN 55343  
 Phone: 952.941.8580 www.wilkusarch.com  
 FLORIDA BOARD OF ARCHITECTS  
 CERTIFICATE OF AUTHORIZATION  
 #AA2803830 EXPIRES 02/28/21



4300 TBC WAY  
 PALM BEACH GARDENS, FL 33410

PROTOTYPE TEMPLATE:  
**"NORTHLAKE" 8 BAY INLINE**  
 v.2019.1.08  
 EXTERIOR MODIFIED FOR AHJ  
 PROJECT INFORMATION:

**TIRE KINGDOM**  
 STORE 937  
 SEC OF TAMiami TRAIL & SUMMER CROSSING DRIVE

**BID SET**  
 01/10/2020

PROJECT NO: 2018-1035  
 DRAWN BY: CJB  
 CHECKED BY: EKB

ISSUE DATE  
 PERMIT PLAN REVIEW 12-AUG-20  
 BID SET 09-DEC-20

REVISION DATE  
 04 DESIGN UPDATES 20-DEC-20

SHEET TITLE:  
**INTERIOR ELEVATIONS**

SHEET NUMBER:  
**A8.1**