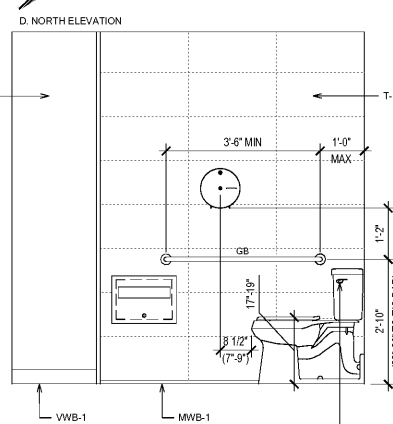
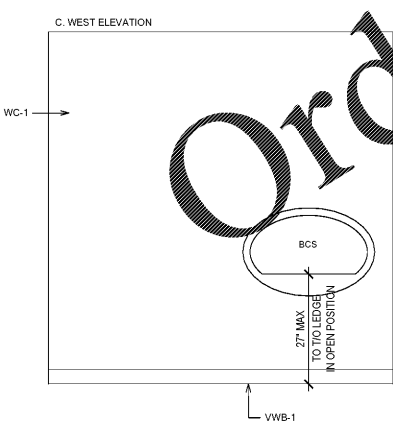
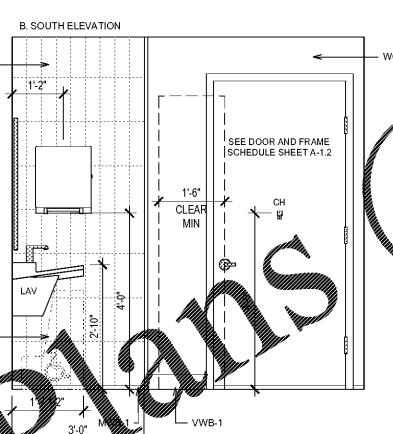
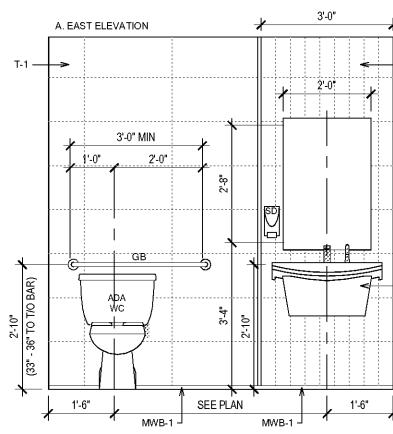
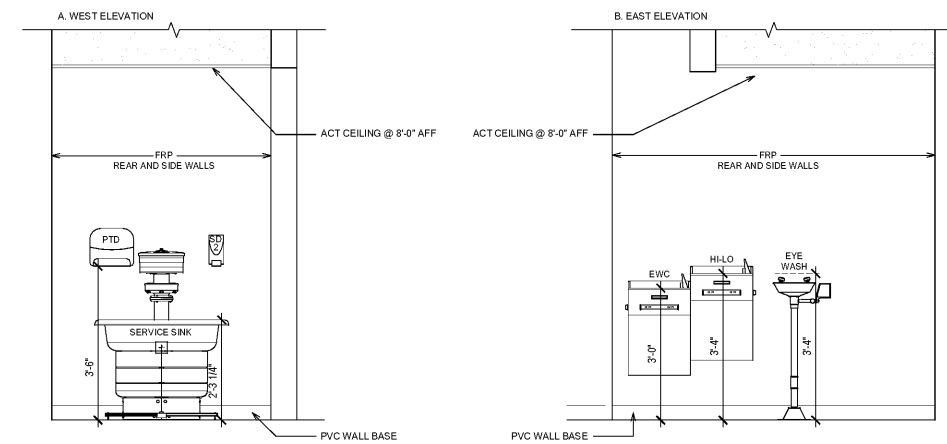


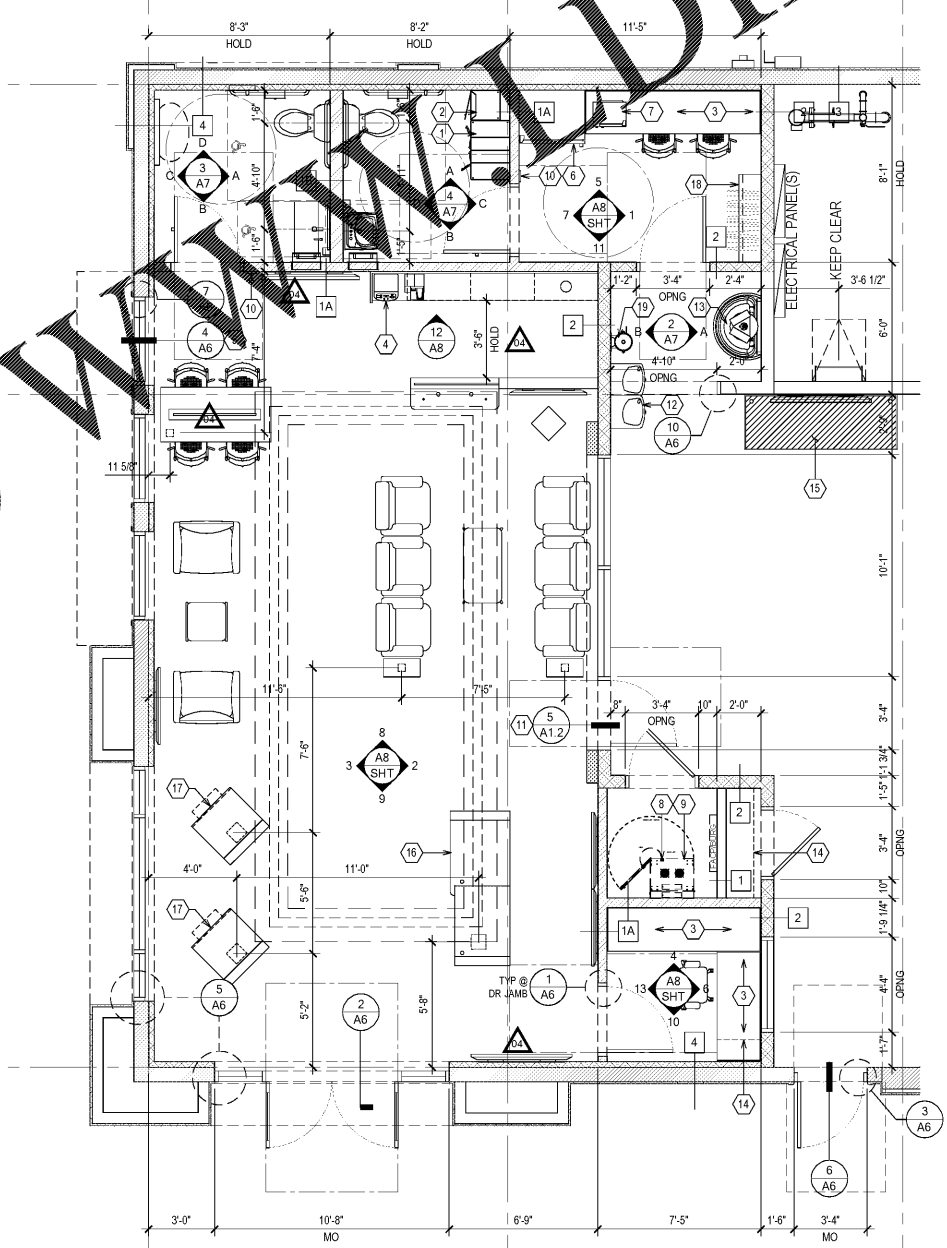
4 RESTROOM ELEVATIONS - EMPLOYEE
SEE ALSO RESTROOM NOTES
1/2" = 1'-0"



3 RESTROOM ELEVATIONS - CUSTOMER
SEE ALSO RESTROOM NOTES
1/2" = 1'-0"



2 EMPLOYEE WASH AREA
1/2" = 1'-0"



1 ENLARGED FLOOR PLAN
1/4" = 1'-0"

RESTROOM NOTES

- SEE PLUMBING PLANS FOR PLUMBING FIXTURE SCHEDULES.
- SEE SPECIFICATIONS (SHEET SERIES A10) FOR TOILET ACCESSORY REQUIREMENTS AND MANUFACTURER PREFERENCES. PROVIDE AS SHOWN IN PLANS AND ELEVATIONS.
- ALL TOILET ACCESSORIES TO BE FURNISHED AND INSTALLED BY GC.
- ANY LOCAL OR STATE VARIATIONS TO STANDARDS SHOWN SHALL SUPERSEDE THESE REQUIREMENTS.
- PROVIDE FRT BLOCKING IN WALLS AT ALL ACCESSORIES AND GRAB BARS PER MANUFACTURER RECOMMENDATIONS.
- SEE ALSO SHEET LS-1.1 FOR ADDITIONAL ACCESSIBILITY REQUIREMENTS.
- ABBREVIATIONS:
 ADA ACCESSIBLE FIXTURE
 BCS BABY CHANGING STATION
 CH COAT HOOK
 EWC ELECTRIC WATER COOLER
 FD FLOOR DRAIN
 FRP FIBERGLASS REINFORCED PANEL
 GB GRAB BAR
 GWB GYPSUM WALL BOARD
 LAV ACCESSIBLE LAVATORY W/ LEVER FAUCETS
 M MIRROR
 PTD PAPER TOWEL DISPENSER
 SD SOAP DISPENSER - STWARD
 SD2 SOAP DISPENSER - IND. WALL
 TP TOLL FREE PAPER DISPENSER
 TSD TOLL FREE TOILET PAPER DISPENSER
 VV VINYL WALL BOARD
 WC WATER CLOSET

TOILET ACCESSORIES

TAG	MANUFACTURER	PRODUCT SPECIFICATION	QTY
BCS	BOBRICK (OR EO)	KB200-055S	1
B	BOBRICK (OR EO)	B-233 (RESTROOMS + MGR OFFICE)	3
GB	BOBRICK (OR EO)	B-6806 99 X 36", X 42"	2 SETS
M	BOBRICK (OR EO)	B-165 2436	1
M	BRADLEY	747 FRAMELESS MIRROR	1
PTD	BOBRICK (OR EO)	PROVIDED BY TENANT - 9" ROLL MODEL	3
SD	SPARTAN CHEMICAL	LITEN FOAMY 975600 WHITE	2
SD2	DEB STOKO	CLEANSE HEAVY 4000 HVYALDR	1
TPD	BRADLEY	PROVIDED BY TENANT - 9" ROLL MODEL	2
TSD	BOBRICK (OR EO)	B-3013	2

LEGEND

- CONCRETE BLOCK WALL
- INSULATED PARTITION
- PLUMBING CHASE
- ACOUSTICAL PARTITION

KEYED NOTES

- EMPLOYEE LOCKERS - PERSONAL STORAGE
- EMPLOYEE LOCKERS - SOILS DROP
- COUNTER AND/OR MILLWORK. PROVIDE FRT BLOCKING OR MTL STRAPPING IN WALL TO SUPPORT COUNTER AND/OR CABINETRY.
- REFRESHMENT COUNTER. FURNISHED BY OWNER. GC TO INSTALL. SEE ALSO SHEET A9.1.
- BREAK METAL SILL COVER. SEE SHEET A6 DETAILS.
- REFRIGERATOR LOCATION. BY OWNER.
- MICROWAVE LOCATION. BY OWNER.
- NETWORK EQUIPMENT. BY OWNER.
- PROVIDE SMOOTH-FACED 5/8" CDX PLYWOOD IN COMMUNICATIONS CLOSET. INSTALL TO 96" AFF OVER GYP BD PARTITION SHEATHING.
- ACCESSIBLE TACTILE RESTROOM SIGNAGE - "UNISEX" OR "NON-GENDER" AS REQUIRED BY LOCAL AHJ. INSTALL PER ACCESSIBILITY CODE.
- VINYL TO CONCRETE FLOORING TRANSITION. SEE SHEET A1.2 DETAILS.
- HI-LO ACCESSIBLE DRINKING FOUNTAIN. SEE PLUMB; SEE ELEC.
- EMPLOYEE HAND-WASH SERVICE SINK. SEE PLUMB.
- ADJUSTABLE SHELVING ON WALL STANDARDS. PURCHASED AND INSTALLED BY GC PER OWNER DIRECTION. SEE SHEET A9 DETAILS.
- SERVICE MANAGER WORKSTATION - FREESTANDING. SEE ALSO ELEC.
- SALES COUNTER. SEE SHEET A9 DETAILS. SEE ALSO ELEC. PROVIDED BY OWNER; INSTALLED BY GC/TRADE.
- SALES KIOSK. SEE SHEET A9 DETAILS. SEE ALSO ELEC. PROVIDED BY OWNER; INSTALLED BY GC/TRADE.
- GC TO PROVIDE AND INSTALL 1'-0" W X 4'-0" L SHELF W/ HANG BAR. MOUNT 40" - 48" AFF MAX. PROVIDE MOUNTING BRACKETS TO WITHSTAND UP TO 400 LBS OF FORCE. MIN.
- EYE-WASH SAFETY STATION



15 Ninth Avenue North, Hopkins, MN 55343
 Phone: 952.941.8900 / www.wilkusarch.com
 FLORIDA BOARD OF ARCHITECTS
 CERTIFICATE OF AUTHORIZATION
 RA26023830 EXPIRES 02/28/21



4300 TBC WAY
 PALM BEACH GARDENS, FL 33410

PROTOTYPE TEMPLATE:
"NORTHLAKE"
8 BAY INLINE
 v.2019.1.08
 EXTERIOR MODIFIED FOR AHJ

PROJECT INFORMATION:

TIRE KINGDOM
 STORE 937
 SEC OF TAMAMI TRAIL &
 SUMTER CROSSING DRIVE
 NORTH PORT, FLORIDA 34287

BID SET
 01/10/2020

PROJECT NO.: 2018-1035
 DRAWN BY: C.B.
 CHECKED BY: EKB

ISSUE	DATE
PERMIT PLAN REVIEW	12-AUG-2019
BID SET	09-DEC-2019

REVISION	DATE
04 DESIGN UPDATES	20-DEC-2019

SHEET TITLE:
ENLARGED PLANS AND ELEVATIONS

SHEET NUMBER:

A7

Order Plans @

WILKUS ARCHITECTS