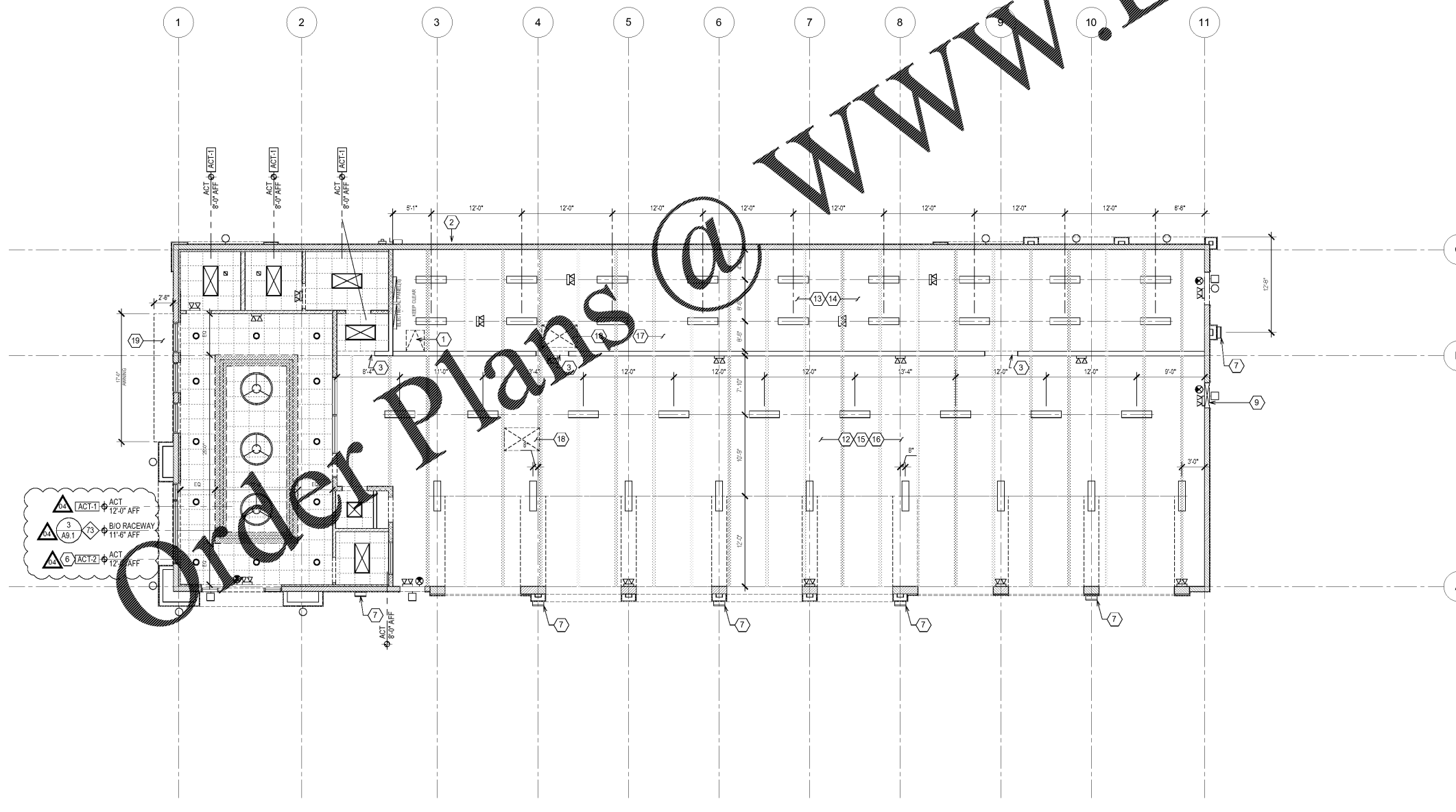


2 RACEWAY DETAIL 1/12" = 1'-0"

CEILING LEGEND	
SYMBOL	DESCRIPTION
	2X2 OR 2X4 RECESSED TROFFER LAY-IN LIGHT FIXTURE SEE ELECTRICAL FOR NIGHT LIGHT LOCATIONS
	1X4 LED HIGH BAY LIGHT FIXTURE SEE ELECTRICAL FOR NIGHT LIGHT LOCATIONS
	PENDANT LIGHT - MOUNT B/O LIGHT FIXTURE @ 9'-0" AFF
	EXTERIOR WALL PAK
	EXIT SIGN
	SUSPENDED ACOUSTICAL CEILING TILE SYSTEM
	HVAC SUPPLY DIFFUSER
	HVAC RETURN DIFFUSER
	RECESSED LIGHTING UNDER CANOPY
	EXHAUST FAN
	2X2 OR 2X4 LED LIGHT FIXTURE SEE ELECTRICAL FOR NIGHT LIGHT LOCATIONS
	EMERGENCY LIGHT W/ BATTERY POWER BACK-UP
	EXTERIOR REMOTE HEADS - LINK TO INTERIOR EXIT SIGN (ELECTRICITY EXIT ILLUMINATION - BATTERY POWER)
	EXTERIOR WALL SCONCE

- CEILING NOTES**
- OWNER TO PROVIDE LIGHTING FIXTURES AND GC TO INSTALL. SEE ELECTRICAL PLANS FOR FIXTURE REQUIREMENTS. ALL SUBSTITUTIONS MUST BE APPROVED BY OWNER/TENANT PRIOR TO PURCHASE AND INSTALL. (EXCEPTION: GC SHALL PROVIDE LIGHT FIXTURES IN BUILD-TO-SUIT DEVELOPMENTS)
 - REFER TO ELECTRICAL DRAWINGS FOR ADDITIONAL LIGHTING FIXTURES, EXACT NUMBER OF FIXTURES, AND LOCATIONS OF FIXTURES REFER TO MECHANICAL DRAWINGS FOR ADDITIONAL HVAC EQUIPMENT AND LOCATIONS.
 - ALL SPRINKLER LINES THROUGHOUT ENTIRE STORE SHALL BE AS HIGH AS POSSIBLE AND COMPLYING WITH LIFE SAFETY CODES - COORDINATE ROUTING WITH HVAC.
 - SEE ELECTRICAL DRAWINGS FOR EMERGENCY LIGHTING.
 - G.C. TO COORDINATE ALL LOCATIONS OF HVAC DIFFUSERS, GRILLES, ETC. SO AS TO AVOID LIGHTING FIXTURE LOCATIONS.
 - SEE ALSO ELECTRICAL DRAWINGS FOR EXTERIOR LIGHTING.
 - WHERE HVAC DIFFUSERS ARE LOCATED IN SALES AND WAITING AREAS, ORDER BLACK DIFFUSERS TO MATCH ACT-2 BLACK CEILING TILES AND GRID.
 - SUBCONTRACTOR TO SECURE CEILING GRID EDGE MOLDING W/ SCREW ANCHORS AT 16" O.C. UNO.



- KEYED NOTES**
- STL LADDER TO ROOF ACCESS ABOVE. SEE WALL SECT FOR ACCESS HATCH DETAIL.
 - APPROX ELECTRIC METER LOCATION, SEE ELEC.
 - GYP BD BULKHEAD @ 7'-11" AFF.
 - STONE VENEER LINTEL AT BIO CANOPY. SEE DTL BA-501.
 - NOT USED
 - PROVIDE BLACK HVAC DIFFUSERS IN SALES AND WAITING AREAS PERimeter AREA CEILING TILE. ACTUAL COLOR SHALL MATCH CEILING GRID AND TILES.
 - EXTERIOR WALL PAK LIGHTING. SEE EXTERIOR ELEVATIONS FOR MOUNTING HEIGHTS.
 - NOT USED
 - EXHAUST FAN IN WALL. SEE MECH.
 - NOT USED
 - NOT USED
 - OPEN TO DECK ABOVE, PAINTED.
 - OPEN TO DECK ABOVE, UNFINISHED.
 - LIGHT FIXTURES, ELECTRICAL CONDUITS, SPRINKLER HEADS AND OTHER INFRASTRUCTURE SHALL BE LOCATED IN AISLE AND NOT ABOVE TIRE STORAGE AND PARTS RACKING. MOUNT B.O. LIGHTING NO LOWER THAN 15'-0" AFF.
 - ENSURE LIGHT LOCATION DOES NOT INTERFERE WITH OPERATION OF ALIGNMENT LIFT BELOW.
 - MOUNT LIGHTING BELOW OH DOOR IN OPEN POSITION APPROXIMATE 12'-0" ABOVE SLAB.
 - PROVIDE HEAT AND SMOKE VENT W/ FIRE AND SMOKE DETECTORS IN HIGH-PILED STORAGE AREA. SEE MECH.
 - AIR INTAKE VENT, SEE MECH.
 - CLAY TILE AWNING
- 1 REFLECTED CEILING PLAN**
1/8" = 1'-0"



15 Ninth Avenue North, Hopkins, MN 55343
Phone: 612.941.8890 / www.wilkusarch.com



4300 TBC WAY
PALM BEACH GARDENS, FL 33410

PROTOTYPE TEMPLATE:
"NORTHLAKE"
8 BAY INLINE
v.2019.1.08
EXTERIOR MODIFIED FOR AHJ

TIRE KINGDOM
STORE 937
SEC OF TAMiami TRAIL &
SUMTER CROSSING DRIVE
NORTH PORT, FLORIDA 34287

BID SET
01/10/2020

PROJECT NO.: 2018-1035
DRAWN BY: C.B.
CHECKED BY: EKB

ISSUE	DATE
PERMIT PLAN REVIEW	12-AUG-2019
BID SET	09-DEC-2019
REVISION	DATE
04 DESIGN UPDATES	20-DEC-2019

SHEET TITLE:
REFLECTED CEILING PLAN

SHEET NUMBER:
A2