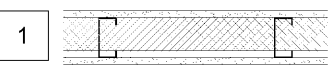
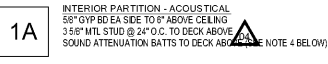

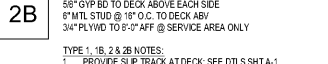



**WALL TYPES & PARTITIONS SCHEDULE**

WALL TYPES

- FIELD VERIFY STUD SIZE SHOWN. REFER TO STUD SIZING GUIDELINES FOR GAUGE REQUIREMENTS.
- PROVIDE POSITIVE STUD BRACING @ FULL HEIGHT PARTITIONS.
- PROVIDE KICKER BRACING @ NON-FULL HEIGHT PARTITIONS.
- TAPE AND SAND ALL GYP BD PARTITIONS TO ACCEPT NEW FINISH.

TAG	WALL CONSTRUCTION
1	 <p>INTERIOR PARTITION - TYPICAL                      5/8" GYP BD EA SIDE TO 8" ABOVE CLNG                      3/5" MTL STUD @ 18" OC TO 6" ABOVE CLNG                      PROVIDE 5/8" BC GRADE PLYWOOD IN LIEU OF GYP BD IN COMMUNICATIONS ROOM</p>
1A	 <p>INTERIOR PARTITION - ACOUSTICAL                      5/8" GYP BD EA SIDE TO 8" ABOVE CEILING                      3/5" MTL STUD @ 24" O.C. TO DECK ABOVE                      SOUND ATTENUATION BATT TO DECK ABOVE (SEE NOTE 4 BELOW)</p>
1B	 <p>INTERIOR PARTITION - PLUMBING CHASE                      5/8" GYP BD EA SIDE TO 8" ABOVE CEILING                      8" MTL STUDS @ 18" OC TO DECK ABOVE</p>
2	 <p>INTERIOR PARTITION - SERVICE AREA PERIMETER                      5/8" GYP BD TO 8" ABOVE CLNG @ SALES/BUSINESS USE AREAS                      3/5" MTL STUD @ 18" O.C. TO DECK ABV                      3/12" OWENS CORNING ECO TONGUE SOUND ATTENUATION BATT TO DECK ABOVE                      5/8" GYP BD ABOVE PLYWD TO DECK ABOVE @ SERVICE STORAGE                      3/4" PLYWD TO 8'-0" AFF @ SERVICE AREA ONLY</p>
2B	 <p>INTERIOR PARTITION - SERVICE STORAGE                      5/8" GYP BD TO DECK ABOVE EACH SIDE                      8" MTL STUD @ 18" O.C. TO DECK ABV                      3/4" PLYWD TO 8'-0" AFF @ SERVICE AREA ONLY</p>

EXTERIOR FACING @ UNCONDITIONED SPACES  
 8" CMU W/ PARTIALLY GROUTED CORES, U.N.O.

EXTERIOR FACING @ CONDITIONED SPACES  
 8" CMU W/ PARTIALLY GROUTED CORES, U.N.O.  
 2 1/2" MTL FURRING @ 18" OC TO 8" DECK ABOVE  
 1" CONTINUOUS EPS INSULATION TO DECK ABOVE (R-5 MIN)  
 8" CMU W/ PARTIALLY GROUTED CORES, U.N.O.

TYPE 1, 1B, 2 & 2B NOTES:  
 1. PROVIDE SLP TRACK AT DECK; SEE DTLS SHT A-1.  
 2. FILL PLYWOOD JOINTS W/ LATEX-BASED PAINT-GRADE CAULK.  
 3. IF PLYWOOD IS NOT BACKED W/ GYP BD, IT MUST BE FIRE RESISTIVE TREATED.  
 4. PLENUM CEILING AT CONDITIONED SPACES; INSULATION ABOVE AND ATTENUATION MUST MEET FLAME SPREAD < 50 AND SMOKE DEVELOPMENT INDEX < 50 OR COVERED WITH 3/8" GYP BD MIN. U.N.O.

**FLOOR PLAN NOTES**

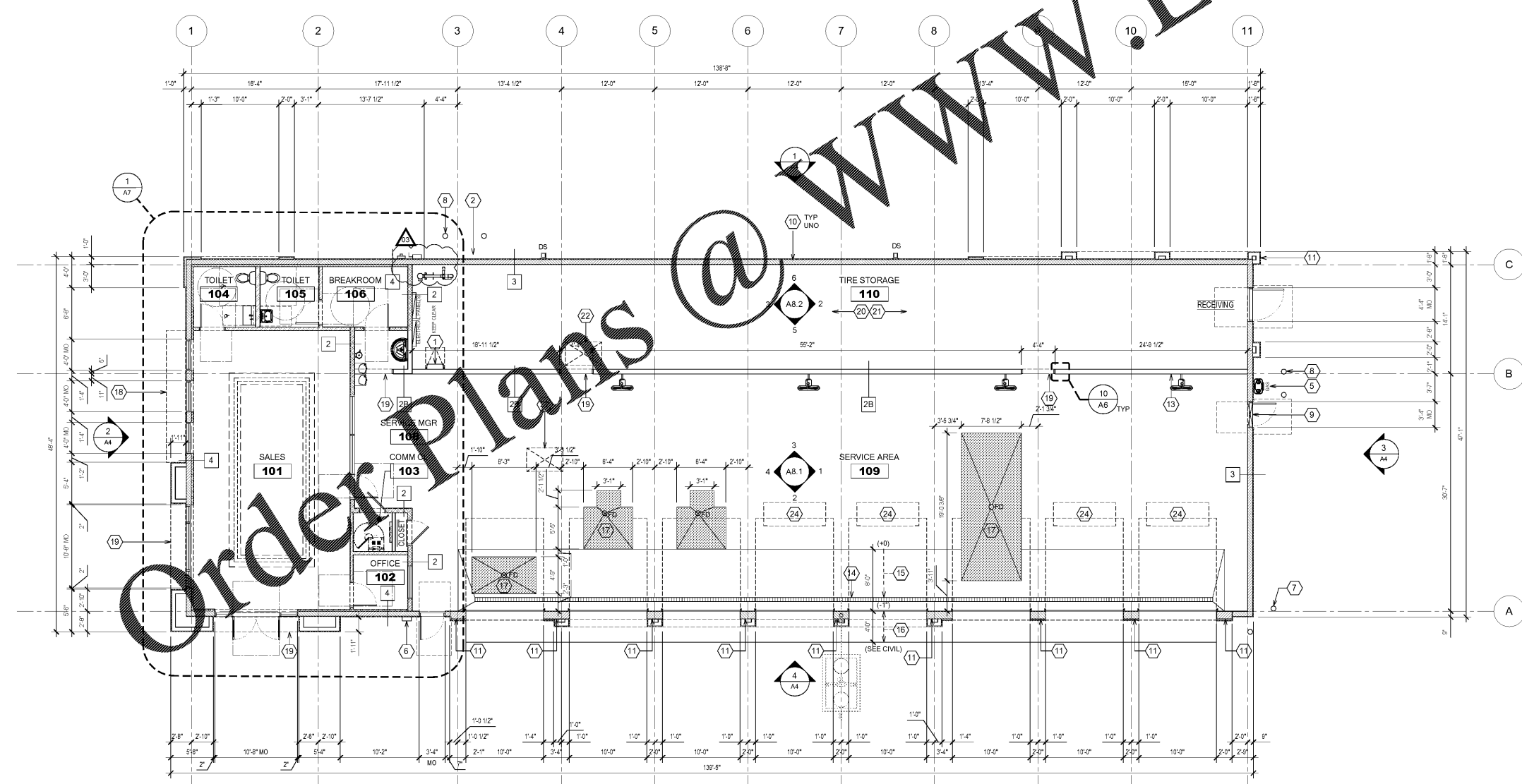
- REFER TO SHEET T1 FOR GENERAL NOTES.
- ALL MATERIALS AND PRODUCTS SPECIFIED SHALL BE NEW AND IN ACCORDANCE WITH MANUFACTURERS SPECIFICATIONS. ANY DEVIATION FROM THE INTENT OF THE DOCUMENTS WITHOUT APPROVAL IS AT THE GC AND SUBCONTRACTORS OWN RISK.
- FINISH FLOOR ELEVATION = 190'-0" U.N.O.
- EXTERIOR BUILDING SIGNAGE SHALL BE PROVIDED AND INSTALLED BY OTHERS UNDER SEPARATE PERMIT. SIGNAGE SHOWN FOR REFERENCE ONLY.
- PROVIDE FIRE EXTINGUISHERS AS SHOWN (SEE SPEC) OR AS OTHERWISE DIRECTED BY LOCAL AHJ.
- PROVIDE 6" CONCRETE TRANSFORM PAD. COORDINATE SIZE AND LOCATION WITH UTILITY. PROVIDE PIPE BOLLARDS FOR PROTECTION.
- GC TO COORDINATE REQUIRED CLEAR SPACES WITH EQUIPMENT MANUFACTURER.
- ALL FLOOR PAINTED WARNING STRIPES TO BE "SAFETY YELLOW".
- CAULK BOTTOM OF PERIMETER OF SERVICE AREA WALLS AND ITS ACCESSORY ROOMS FACING SALES, SERVICE AREA, AND WAITING ROOM TO PREVENT WATER INTRUSION DURING SHOP CLEANING.
- GC TO PROVIDE AND INSTALL US POSTAL SERVICE MAIL BOX AS REQUIRED BY LOCAL CODE REQUIREMENTS.
- GC SHALL PROVIDE FIRE RETARDANT TREATING IN PARTITIONS AT ALL TOILET ROOM ACCESSORIES, GRAB BARS, LAVATORIES, SHELVEYS, AND FIXTURES, AND AS OTHERWISE SPECIFIED WITH PLANS.

**STUD SIZING GUIDE**

BASED UPON INTERIOR NON-BEARING PARTITIONS WITH ONE LAYER OF 5/8" GYPSUM BOARD EACH SIDE.

1. SLP TRACK SHALL MATCH GAUGE OF STUD.  
 2. COVER 12'-0" HEIGHT SHALL BE LATERALLY BRACED AT 8'-0" O.C. VERTICALLY W/ 1 1/2" 16 GA. COLD-ROLLED CHANNELS CLIP ANCHORED TO METAL STUDS.

SIZE	GA	TYPE	18" O.C.	24" O.C.
(MAXIMUM SUPPORT HEIGHT ALLOWED)				
2 1/2"	22	ST	13'-0"	11'-6"
	20	ST	13'-10"	12'-0"
3 5/8"	22	ST	17'-3"	15'-0"
	20	ST	17'-11"	15'-7"
	20	SJ	18'-6"	16'-9"
	18	SJ	19'-3"	-
	16	SJ	20'-0"	-
	14	SJ	22'-0"	-
6"	22	ST	25'-3"	22'-0"
	20	ST	26'-1"	22'-10"
	20	SJ	26'-8"	23'-6"
	18	SJ	28'-0"	-



**KEYED NOTES**

- STL LADDER TO ROOF ACCESS ABOVE. PROVIDE BLOCKING IN PARTITION AS REQUIRED. SEE WALL SECT FOR LADDER DETAIL.
- APPROX ELECTRIC METER LOCATION. SEE ELEC.
- NOT USED
- NOT USED
- APPROX GAS METER LOCATION
- PREFERRED FIRE DEPARTMENT KNOX BOX LOCATION. COORDINATE FINAL LOCATION WITH AHJ.
- PROVIDE (2) STL PIPE BOLLARD PROTECTION WHERE BUILDING CORNER IS ADJACENT TO AND FLUSH WITH DRIVE AISLE.
- PROVIDE (2) STL PIPE BOLLARD(S) PROTECTION AT ALL UTILITY METERS.
- EXHAUST FAN IN WALL. SEE MECH.
- 8" CMU TYP U.N.O. SEE STRUCTURAL
- 12" CMU REQUIRED AT OH DOORS. SEE STRUCTURAL
- NOT USED
- NOT USED
- TRENCH DRAIN AND CATCH BASIN. SEE PLUMBING
- PROVIDE SLOPED SLAB TO PROVIDE POSITIVE DRAINAGE TOWARD FLOOR DRAIN (1/8" PER FT MIN)
- PROVIDE 4'-0" MIN CONC APPROX @ OH DOORS. TYP. SLOPE AWAY FROM BUILDING TO ENSURE POSITIVE DRAINAGE
- LIFT PIT W/ FLOOR DRAIN. SEE STRUCTURAL AND PLUMBING
- DASHED LINE INDICATES CANOPY OR AWNING ABOVE. PROTECT FROM DRIVE AISLE TRAFFIC DURING CONSTRUCTION
- BULKHEAD ABOVE. SEE CEILING PLAN
- PER NFPA 1, PROVIDE LIGHT-FRAME TRUSS-TYPE ROOF SYSTEM WARNING PLACARD. COORDINATE PLACEMENT WITH FIRE MARSHAL
- PROVIDE FIRE SMOKE DETECTION SYSTEM IN TIRE STORAGE AREA. COORDINATE W/ MECH & ELEC
- AIR INTAKE HOOD ABOVE. SEE MECH. SEE ALSO STRUCTURAL
- NOT USED
- IN-GROUND FOOTING. SEE MECH. SEE STRUCTURAL



**BID SET**  
 01/10/2020

PROJECT NO.: 2018-1035  
 DRAWN BY: C.B.  
 CHECKED BY: EKB

ISSUE	DATE
PERMIT PLAN REVIEW	12-AUG-2019
BID SET	09-DEC-2019

REVISION	DATE
04 DESIGN UPDATES	20-DEC-2019

SHEET TITLE:  
**ARCHITECTURAL FLOOR PLAN**

SHEET NUMBER:  
**A1**