

RENOVATION AND  
ADDITION FOR  
**ABERDEEN  
POLICE  
DEPARTMENT**



10/25/2019

FIRST FLOOR  
LIGHTING PLAN -  
NEW CONSTRUCTION

DATE: 10/25/2019  
PROJECT NO: 18062

REVISIONS

NO.	DATE	DESCRIPTION

THIS DRAWING IS THE PROPERTY OF ADW ARCHITECTS, P.A. AND SHALL NOT BE REPRODUCED OR COPIED IN WHOLE OR PART. IT SHALL NOT BE USED ON ANY OTHER PROJECT OR GIVEN TO ANY OTHER COMPANY OR AGENCY WITHOUT THE CONSENT OF ADW ARCHITECTS, P.A.

SHEET NUMBER

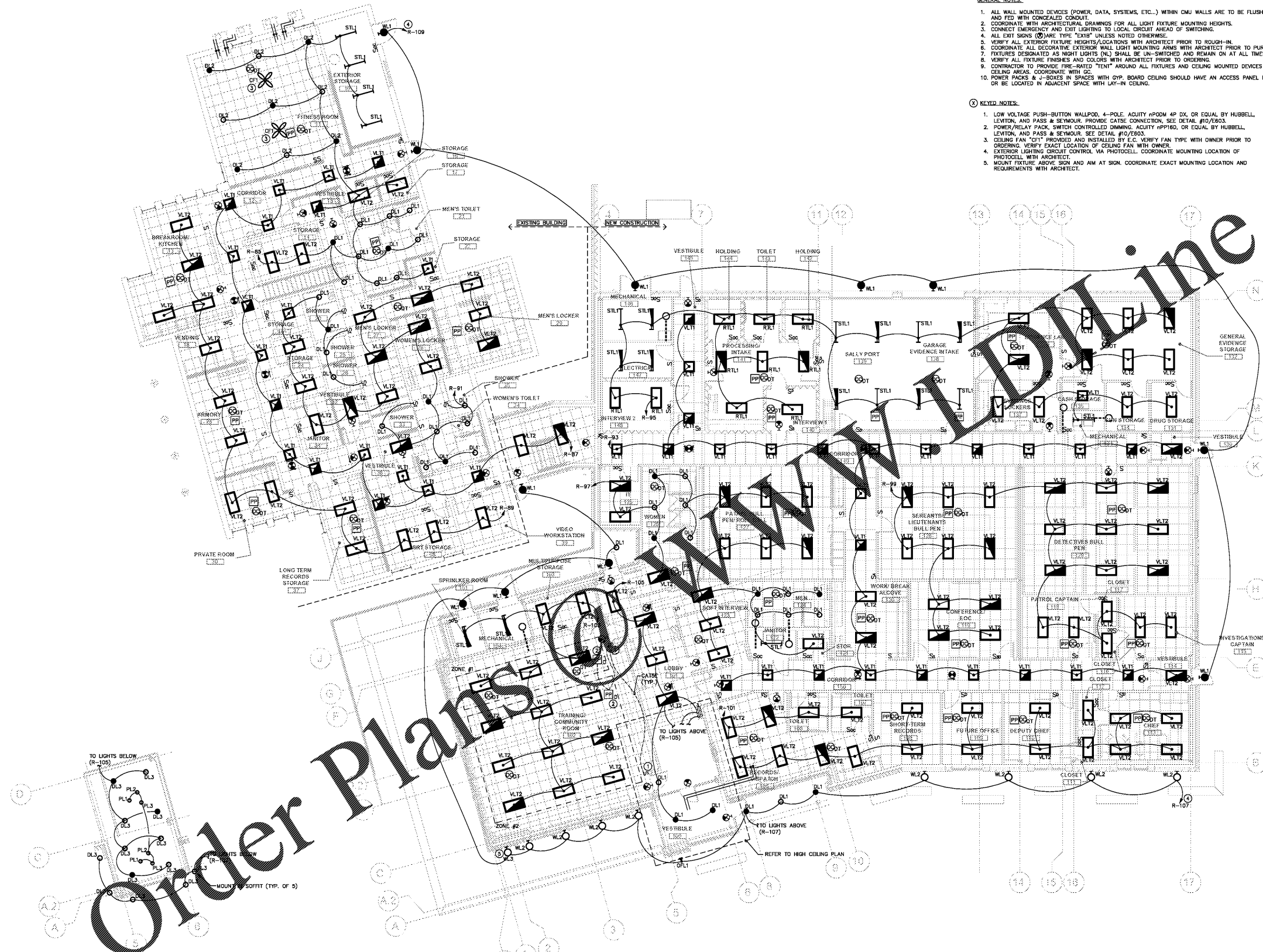
**E101**

GENERAL NOTES:

1. ALL WALL MOUNTED DEVICES (POWER, DATA, SYSTEMS, ETC...) WITHIN CMU WALLS ARE TO BE FLUSH MOUNTED AND FED WITH CONCEALED CONDUIT.
2. COORDINATE WITH ARCHITECTURAL DRAWINGS FOR ALL LIGHT FIXTURE MOUNTING HEIGHTS.
3. CONNECT EMERGENCY AND EXIT LIGHTING TO LOCAL CIRCUIT AHEAD OF SWITCHING.
4. ALL EXIT SIGNS (X) ARE TYPE "EXIT" UNLESS NOTED OTHERWISE.
5. VERIFY ALL EXTERIOR FIXTURE HEIGHTS/LOCATIONS WITH ARCHITECT PRIOR TO ROUGH-IN.
6. COORDINATE ALL DECORATIVE EXTERIOR WALL LIGHT MOUNTING AREAS WITH ARCHITECT PRIOR TO PURCHASING.
7. FIXTURES DESIGNATED AS NIGHT LIGHTS (NL) SHALL BE UN-SWITCHED AND REMAIN ON AT ALL TIMES.
8. VERIFY ALL FIXTURE FINISHES AND COLORS WITH ARCHITECT PRIOR TO ORDERING.
9. CONTRACTOR TO PROVIDE FIRE-RATED TIGHT AROUND ALL FIXTURES AND CEILING MOUNTED DEVICES IN RATED CEILING AREAS. COORDINATE WITH GC.
10. POWER PACKS & 4-BUSSES IN SPACES WITH GYP. BOARD CEILING SHOULD HAVE AN ACCESS PANEL PROVIDED OR BE LOCATED IN ADJACENT SPACE WITH LAY-IN CEILING.

KEYED NOTES:

1. LOW VOLTAGE PUSH-BUTTON WALLPOD, 4-POLE, ACUITY #P00M 4P DX, OR EQUAL BY HUBBELL, LEVITON, AND PASS & SEYMOUR. PROVIDE CATSE CONNECTION. SEE DETAIL #10/E603.
2. POWER/RELAY PACK, SWITCH CONTROLLED DIMMING, ACUITY #PP16D, OR EQUAL BY HUBBELL, LEVITON, AND PASS & SEYMOUR. SEE DETAIL #10/E603.
3. CEILING FAN "CF1" PROVIDED AND INSTALLED BY E.C. VERIFY FAN TYPE WITH OWNER PRIOR TO ORDERING. VERIFY EXACT LOCATION OF CEILING FAN WITH OWNER.
4. EXTERIOR LIGHTING CIRCUIT CONTROL VIA PHOTOCELL. COORDINATE MOUNTING LOCATION OF PHOTOCELL WITH ARCHITECT.
5. MOUNT FIXTURE ABOVE SIGN AND AIM AT SIGN. COORDINATE EXACT MOUNTING LOCATION AND REQUIREMENTS WITH ARCHITECT.



② FIRST FLOOR LIGHTING PLAN - HIGH CEILING  
1/8" = 1'-0"

GENERAL NOTES:

1. COORDINATE EXACT LOCATION OF ALL FIXTURES IN HIGH CEILING WITH ARCHITECT PRIOR TO ROUGH-IN.

① FIRST FLOOR LIGHTING PLAN - NEW CONSTRUCTION  
1/8" = 1'-0"

**Order Plans @**

**www.adwarchitects.com**