

WATER HEATER SCHEDULE - GAS FIRED									
SYM.	DESCRIPTION	STORAGE (GALLONS)	GAS BURNER DATA			FLUE SIZE (IN.)	BASIS OF DESIGN		REMARKS
			INLET PRESS. (N. W.C.)	BTU/HR INPUT	GPH RECOVERY @ 80°F RISE		MANUFACTURER	MODEL	
WH1	GAS FIRED WATER HEATER	100	8	150,000	223	3	A.O. SMITH	BTH-150	1-7
WH2	GAS FIRED WATER HEATER	50	8	76,000	107	3	A.O. SMITH	BTX-80	1-7

REMARKS:
 1. APPROVED MANUFACTURERS: STATE, LOCHINVAR, BRADFORD-WHITE, RHEEM
 2. ELECTRICAL REQUIREMENTS: 120V, 15 AMP BREAKER
 3. WATER HEATER SHALL MEET OR EXCEED THE REQUIREMENTS OF ASHRAE 90.1.
 4. PROVIDE ACID NEUTRALIZATION KIT FOR CONDENSATE.
 5. PROVIDE DIRECT VENT PIPING PER WATER HEATER MANUFACTURER'S DIRECTIONS. TERMINATE VENTING WITH CONCENTRIC VENT KIT PROVIDED BY WATER HEATER MANUFACTURER.
 6. PROVIDE CPVC PIPING OR STAINLESS STEEL FOR EXHAUST VENT PIPING. PVC PIPING IS NOT ACCEPTABLE.
 7. PROVIDE CARBON MONOXIDE DETECTOR IN MECHANICAL ROOM ADJACENT TO GAS FIRED EQUIPMENT.

EXPANSION TANK SCHEDULE							
SYM.	DESCRIPTION	VOLUME (GALLONS)	DIAMETER (INCHES)	HEIGHT (INCHES)	BASIS OF DESIGN		REMARKS
					MANUFACTURER	MODEL	
E11	BLADDER TYPE EXPANSION TANK	4.4	11	15	AMTROL	ST-12	1
E12	BLADDER TYPE EXPANSION TANK	4.4	11	15	AMTROL	ST-12	1

REMARKS:
 1. EQUIVALENT MANUFACTURERS: BELL & GOSSETT, WESSLES COMPANY.

HW CIRCULATION PUMP SCHEDULE											
SYM	DESCRIPTION	TYPE	CAPACITY (GPM)	ELECTRICAL DATA			SELECTION BASED ON		REMARKS		
				HP	VOLTS	PH	HZ	MANUFACTURER		MODEL	
BCP1	HW RECIRC PUMP	IN-LINE	4	12	1/24	120	1	60	BELL & GOSSETT	NBF-22	1,2
BCP2	HW RECIRC PUMP	IN-LINE	4	12	1/24	120	1	60	BELL & GOSSETT	NBF-22	1,2

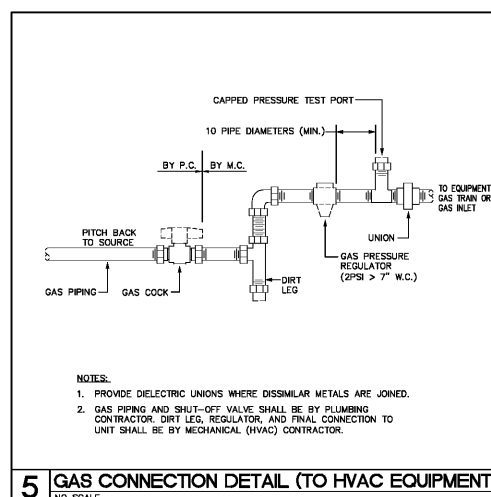
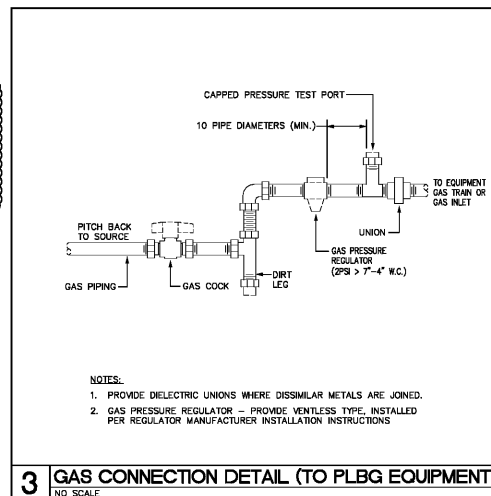
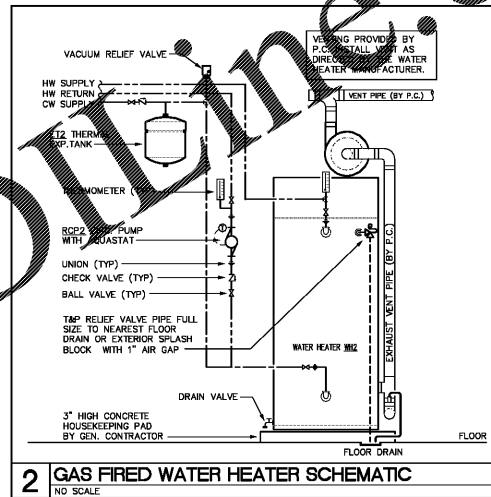
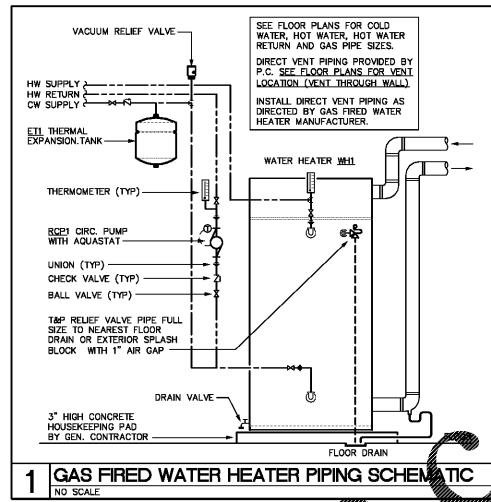
REMARKS:
 1. EQUIVALENT MANUFACTURERS: GRUNDFOS, TACO
 2. PUMP SHALL BE ALL BRONZE CONSTRUCTION.

PLUMBING FIXTURE SCHEDULE						
SYM.	DESCRIPTION	CONNECTIONS (IN.)			SPECIFICATION	REMARKS
		W	V	CW		
E1	WATER CLOSET SEAT: CHURCH 85002 FLUSH VALVE, 1.28 GPF	4"	2"	1 1/4"	FIXTURE: SLOAN ST-2009-STO SEAT: CHURCH 85002 FLUSH VALVE: SLOAN 111-1.28 MATERIAL: VITREOUS CHINA COLOR: WHITE	SEAT HEIGHT 15" AFF
E1A	WATER CLOSET ADA COMPLIANT ELONGATED BOWL FLUSH VALVE, 1.28 GPF	4"	2"	1 1/4"	FIXTURE: SLOAN ST-2029-STO SEAT: CHURCH 85002 FLUSH VALVE: SLOAN 111-1.28 MATERIAL: VITREOUS CHINA COLOR: WHITE	SEAT HEIGHT 17"-18" AFF PROVIDE FLUSH VALVE LEVER ON WIDE SIDE OF STALL
E1C	WATER CLOSET, SECURITY ADA COMPLIANT ELONGATED BOWL FLUSH VALVE, 1.28 GPF	4"	2"	1 1/4"	FIXTURE: MLLCUGHBY ETW-1490-FM-HC-BS SEAT: NO SEAT FLUSH VALVE: SLOAN ROYAL 150-1.6 MATERIAL: STAINLESS STEEL COLOR: N/A	SEAT/RM HEIGHT 18" AFF PROVIDE CONCEALED FLUSH VALVE WITH PUSH BUTTON OPERATOR.
E2	URINAL WALL MOUNTED WASHDOWN (STANDARD) FLUSH VALVE, 1.0 GPF	2"	1 1/2"	3/4"	FIXTURE: SLOAN SJ-1009-STO FLUSH VALVE: SLOAN 188-1.0 COLOR: WHITE MATERIAL: VITREOUS CHINA CARRIER: WALL HANGER BRACKET	FIXTURE UP HEIGHT 24" AFF
E2A	URINAL ADA COMPLIANT WALL MOUNTED WASHDOWN (STANDARD) FLUSH VALVE, 1.0 GPF	2"	1 1/2"	3/4"	FIXTURE: SLOAN SJ-1009-STO FLUSH VALVE: SLOAN 188-1.0 COLOR: WHITE MATERIAL: VITREOUS CHINA CARRIER: WALL HANGER BRACKET	FIXTURE UP HEIGHT 17" AFF
E3A	LAVATORY ADA COMPLIANT 20"x17" OVAL DROP-IN BOWL 0.5 GPM FAUCET	2"	1 1/2"	3/4"	FIXTURE: SLOAN SS-3002-STO GRID DRAIN: MCGUIRE 155A GRID STRAINER FAUCET: CHICAGO 540-1412808A2P P-TRAP: MCGUIRE 8902 1/4" x 1/4" STOPS: MCGUIRE L175LK	SEE NOTE 1 BELOW SEE ARCHITECTURAL PLANS FOR MOUNTING HEIGHT. PROVIDE 0.5 GPM AERATOR
E3B	LAVATORY ADA COMPLIANT 20"x18" W/ HUNG SELF-RIMMING BOWL 0.5 GPM FAUCET	2"	1 1/2"	3/4"	FIXTURE: SLOAN SS-3003-STO GRID DRAIN: MCGUIRE 155A GRID STRAINER FAUCET: CHICAGO 540-1412808A2P P-TRAP: MCGUIRE 8902 1/4" x 1/4" STOPS: MCGUIRE L175LK	SEE NOTE 1 BELOW SEE ARCHITECTURAL PLANS FOR MOUNTING HEIGHT.
E3C	LAVATORY, SECURITY ADA COMPLIANT 20"x18" W/ HUNG SELF-RIMMING BOWL 0.5 GPM FAUCET	2"	1 1/2"	3/4"	FIXTURE: MLLCUGHBY 1014-96-HC-FA-DMS-PP9 GRID DRAIN: BUILT-IN FAUCET: MLLCUGHBY DECK MOUNTED SPOUT WITH PNEUMATIC PUSH BUTTONS P-TRAP: MCGUIRE 8902 1/4" x 1/4" STOPS: MCGUIRE L175LK	SEE NOTE 1 BELOW SEE ARCHITECTURAL PLANS FOR MOUNTING HEIGHT.
E4A	ELECTRIC WATER COOLER, ADA COMPLIANT WALL MOUNTED, SPLIT LEVEL BOTTLE FEEDER STAINLESS STEEL FINISH	2"	1 1/2"	3/4"	FIXTURE: ELKAY EZ518MSLK P-TRAP: MCGUIRE 8902 1/4" x 1/4" CARRIER: FLOOR MOUNTED CHAIR CARRIER	LOWER BUBBLER HEIGHT 34" AFF
E5A	S.S. SINK ADA COMPLIANT 22" x 19" x 8" D, SINGLE BOWL 18 GAUGE STAINLESS STEEL COUNTER MOUNTED, SELF-RIMMING FAUCET WITH 1.5 GPM AERATOR	2"	1 1/4"	3/4"	FIXTURE: ELKAY LRAD219 FAUCET: MOEN BZDL (9" SWING SPOUT) STRAINER: MCGUIRE 151 (BASKET) P-TRAP: MCGUIRE 8902 1/4" x 1/4" STOPS: MCGUIRE L175LK	SEE NOTE 1 BELOW PROVIDE WATER AND WASTE CONNECTIONS FOR ADJACENT DISHWASHER.
E5B	S.S. SINK ADA COMPLIANT 22" x 19" x 8" D, SINGLE BOWL 18 GAUGE STAINLESS STEEL COUNTER MOUNTED, SELF-RIMMING FAUCET WITH 1.5 GPM AERATOR	2"	1 1/4"	3/4"	FIXTURE: ELKAY LRAD219 FAUCET: MOEN BZDL (9" SWING SPOUT) STRAINER: MCGUIRE 151 (BASKET) P-TRAP: MCGUIRE 8902 1/4" x 1/4" STOPS: MCGUIRE L175LK	SEE NOTE 1 BELOW PROVIDE WATER AND WASTE CONNECTIONS FOR ADJACENT DISHWASHER.
E8	SHOWER PRESSURE BALANCED VALVE 1.5 GPM WALL SHOWERHEAD	2"	1 1/2"	3/4"	SHOWER VALVE: MOEN B352EP15 SHOWER HEAD: MOEN 5271EP15 DRAIN: ZEDJ FINISH: CHROME	MOUNTING HEIGHTS FROM POINT OF CONNECTION TO WALL TO FINISHED FLOOR SHALL BE AS FOLLOWS: TO CENTER OF VALVE - 74" TO SHOWER HEAD - 74"
E8A	SHOWER ADA COMPLIANT PRESSURE BALANCED VALVE 1.5 GPM WALL SHOWERHEAD HAND HELD SHOWER (WITH HOSE AND SLIDE BAR)	2"	1 1/2"	3/4"	SHOWER VALVE: MOEN B352EP15 SHOWER HEAD: MOEN 5271EP15 DRAIN: ZEDJ FINISH: CHROME	MOUNTING HEIGHTS FROM POINT OF CONNECTION TO WALL TO FINISHED FLOOR SHALL BE AS FOLLOWS: TO CENTER OF VALVE - 43" TO SHOWER HEAD - 74" TO HANDSHOWER - 81"
E7	MOP SINK MOLDED COMPOSITE MATERIAL 24" x 24" x 10" D WALL MOUNTED FAUCET WITH VACUUM BREAKER, INTEGRAL STOPS AND BRACKET HOOK.	3"	1 1/4"	3/4"	MOP BRACKET: MOP 443 STRAINER: MOP 453B SERVICE FAUCET: MOP 8240 P-TRAP: 3" CLEAN OUT TRAP ACCESSORIES: FLAT WASHER, MOP HANGER STOPS: MOP 453B HOSE AND BRACKET	
E11	FLOOR DRAIN CAST IRON BODY ADJUSTABLE TOP	SEE DWG	-	-	DRAIN: JOSAM 3000 SERIES STRAINER: JOSAM TYPE -6A FINISH: POLISHED NICKEL BRONZE	PROVIDE TRAP PRIMER CONNECTION. SEE NOTE 1 BELOW.
E12	FLOOR DRAIN CAST IRON BODY ADJUSTABLE TOP	SEE DWG	-	-	DRAIN: JOSAM 3000 SERIES STRAINER: JOSAM TYPE -7E1 FINISH: POLISHED NICKEL BRONZE	PROVIDE TRAP PRIMER CONNECTION. SEE NOTE 1 BELOW.
E13	FLOOR DRAIN IRON BODY SEGMENT BUCKET, JOSAM -81 FINISH: POLISHED NICKEL BRONZE	SEE DWG	-	-	DRAIN: JOSAM 3210 SERIES STRAINER: JOSAM SUPER-FLO GRATE SEGMENT BUCKET: JOSAM -81 FINISH: POLISHED NICKEL BRONZE	PROVIDE TRAP PRIMER CONNECTION. SEE NOTE 1 BELOW.
R01	ROOF DRAIN (OVERFLOW) CAST IRON BODY ONE-PIECE DRAIN RECEIVER COMBINATION CLAMP-RING/GRATE STOP INTERNAL WATER DAM	SEE DWG	-	-	DRAIN: JOSAM 21500 SERIES DOME: POLYPROPYLENE PLASTIC, SECURED EXTENSION COLLAR: -AE (ADJUSTABLE) OUTLET: NO-HUB	COORDINATE EXTENSION COLLAR HEIGHT WITH THICKNESS OF ROOF INSULATION AT DRAIN LOCATION. REFER TO ARCHITECTURAL DRAWINGS FOR ROOF DETAILS.
R02	ROOF DRAIN (OVERFLOW) CAST IRON BODY ONE-PIECE DRAIN RECEIVER COMBINATION CLAMP-RING/GRATE STOP INTERNAL WATER DAM	SEE DWG	-	-	DRAIN: JOSAM 21500 SERIES DOME: POLYPROPYLENE PLASTIC, SECURED EXTENSION COLLAR: -AE (ADJUSTABLE) OUTLET: NO-HUB	COORDINATE EXTENSION COLLAR HEIGHT WITH THICKNESS OF ROOF INSULATION AT DRAIN LOCATION. REFER TO ARCHITECTURAL DRAWINGS FOR ROOF DETAILS.
Y01	FLOOR CLEANOUT CAST IRON BODY ADJUSTABLE TOP	SEE DWG	-	-	CLEANOUT: JOSAM 58900 SERIES OUTLET: NO-HUB PLUG: ABS, IRON OR BRONZE WITH GASKET SEAL COVER: ROUND, NICKEL BRONZE	
Y02	WALL CLEANOUT CAST IRON BODY ADJUSTABLE TOP STAINLESS STEEL ACCESS COVER	SEE DWG	-	-	CLEANOUT: JOSAM 58910 SERIES OUTLET: NO-HUB, BOTH ENDS PLUG: IRON OR BRONZE PLUG WITH GASKET SEAL COVER PLATE: JOSAM 58600 SERIES (STAINLESS STEEL)	
Y03	YARD CLEANOUT ADJUSTABLE, CAST IRON BODY, COATED CAST IRON TOP	SEE DWG	-	-	CLEANOUT: JOSAM 55000 SERIES OUTLET: NO-HUB PLUG: ABS, GASKET SEAL COVER: CAST IRON, HEAVY DUTY	SET IN CONCRETE PAD 18" x 18" x 6" THICK
SA-	SHOCK ARRESTOR SIZES A THRU F SEE FLOOR PLAN FOR SIZE	-	-	SEE DWG	EQUIPMENT: SIOUX CHIEF 650 SERIES SEE SHOCK ARRESTOR TABLE THIS SHEET	PROVIDE ACCESS DOOR FOR CONCEALED INSTALLATIONS
MB1	ICE MAKER BOX	-	-	1/2"	EQUIPMENT: QLY GRAY BM-875 MATERIAL: 16 GAUGE STEEL WITH EPOXY FINISH	

NOTES:
 1. PROVIDE PRE-MANUFACTURED INSULATION KIT FOR EXPOSED TRIM UNDER SINK.
 2. PROVIDE SURESEAL INLINE FLOOR DRAIN TRAP SEALER IN FLOOR DRAIN FOR TRAP SEAL PROTECTION.

APPROVED MANUFACTURERS:
 THE CONTRACTOR IS RESPONSIBLE FOR PROVIDING THE MODEL WHICH MOST CLOSELY MATCHES THE SPECIFIED PRODUCT. PROVIDE PRODUCTS MADE BY ANY OF THE MANUFACTURERS LISTED. NO PRIVATE LABELED MATERIALS WILL BE ACCEPTED AS EQUALS TO PRODUCTS SPECIFIED HEREIN. ALL FIXTURES OF THE SAME TYPE AND/OR MATERIAL SHALL BE PROVIDED BY A SINGLE MANUFACTURER.

VITREOUS CHINA FIXTURES: AMERICAN STANDARD, KOHLER, ZURN, TOTO, SLOAN
 TOILET SEATS: CHURCH, OLSONITE, BEHNS, DENTONCO
 FLUSH VALVES: SLOAN, ZURN, DELANEY, MOEN, AMERICAN STANDARD, KOHLER
 MANUAL FAUCETS: MOEN COMMERCIAL, DELTA COMMERCIAL, T&S BRASS, CHICAGO, ZURN
 ELECTRIC WATER COOLERS/DRINKING FOUNTAINS: ELKAY, BASIS, HALSEY TAYLOR, HANS (DRINKING FOUNTAINS ONLY)
 UTILITY SINKS (MOP BASINS, LAUNDRY SINKS): FIAT, FLORESTONE, STERN WILLIAMS
 SUPPLY STOPS, P-TRAPS: MCGUIRE, BRASSCRAFT, KEENEY
 ADA INSULATING KITS FOR EXPOSED TRIM: TRUEBERG, PLUMBERCK, KEENEY
 INLINE FLOOR DRAIN TRAP SEALER: PROVENT, JAY R. SMITH, SURESEAL, MIFAB
 DRAINS, CARRIERS, CLEANOUTS: ZURN, J.R. SMITH, WAZCO, JOSAM, WATTS
 SHOCK ARRESTORS: PPP, SIOUX CHIEF, ZURN, WATTS



1927 South Tryon St., Suite 300, Charlotte, NC 28203
 150 Fayetteville St., Suite 520, Raleigh, NC 27601
 Phone: 704.339.1292 • www.optimaengineering.com
 North Carolina License Number: 000914

adwarchitects
 environments for life

architecture planning interiors
 2815 COLISEUM CENTRE DRIVE
 SUITE 500
 CHARLOTTE, NORTH CAROLINA 28217
 P 704.379.1919
 F 704.379.1920
 www.adwarchitects.com



RENOVATION AND
 ADDITION FOR
 ABERDEEN
 POLICE
 DEPARTMENT



10/25/2019
 PLUMBING DETAILS
 AND SCHEDULES

DATE: 10/25/2019
 PROJECT NO: 18062

REVISIONS
 NO. DATE DESCRIPTION
 1 12/20/19 COORDINATION

THIS DRAWING IS THE PROPERTY OF ADW ARCHITECTS, P.A. AND SHALL NOT BE REPRODUCED OR COPIED IN WHOLE OR PART. IT SHALL NOT BE USED ON ANY OTHER PROJECT OR GIVEN TO ANY OTHER COMPANY OR AGENCY WITHOUT THE CONSENT OF ADW ARCHITECTS, P.A.

SHEET NUMBER
 P002
 2 OF 7
 OPTIMA # 19-0082

Order Plans @