

STEWART
101 N TRYON ST SUITE 1100 CHARLOTTE, NC 28202
F 704.334.7925
FIRM LICENSE #C-10513
519957

RENOVATION AND
ADDITION FOR
**ABERDEEN
POLICE
DEPARTMENT**

804 N. Sandhills Blvd.
Aberdeen, NC 28315



MASONRY DETAILS AND
SECTIONS

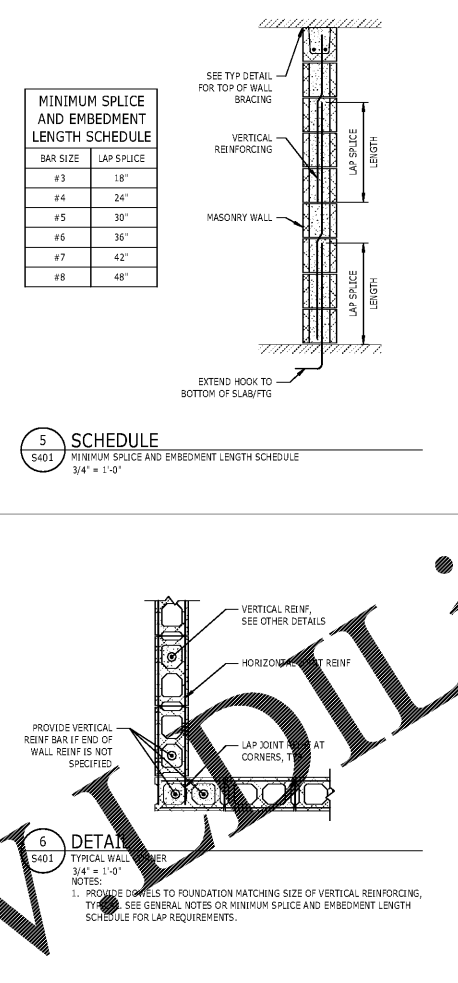
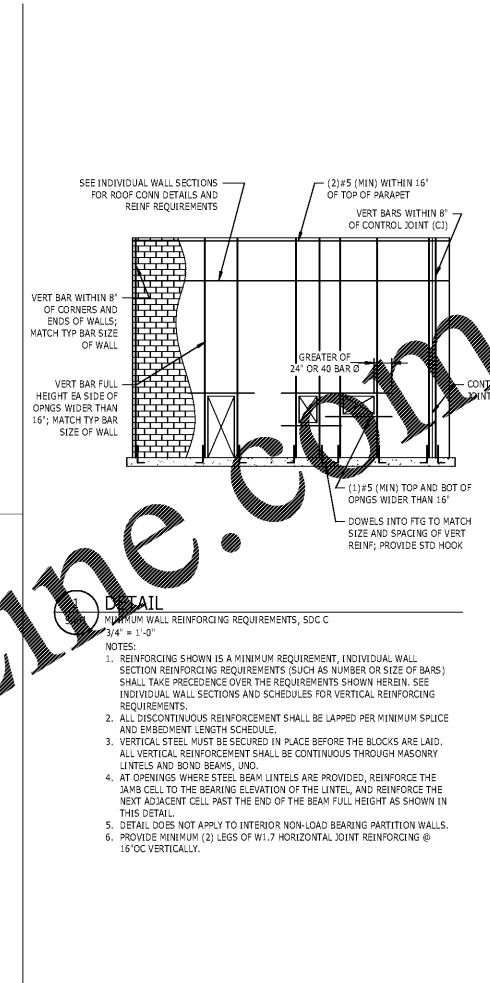
DATE: 10.25.19
PROJECT NO: 18062

REVISIONS
NO. DATE DESCRIPTION:

THIS DRAWING IS THE PROPERTY OF ADW ARCHITECTS, P.A. AND
SHALL NOT BE REPRODUCED OR COPIED IN WHOLE OR PART. IT
SHALL NOT BE USED ON ANY OTHER PROJECT OR GIVEN TO ANY
OTHER COMPANY OR AGENCY WITHOUT THE CONSENT OF ADW
ARCHITECTS, P.A.

SHEET NUMBER

S401

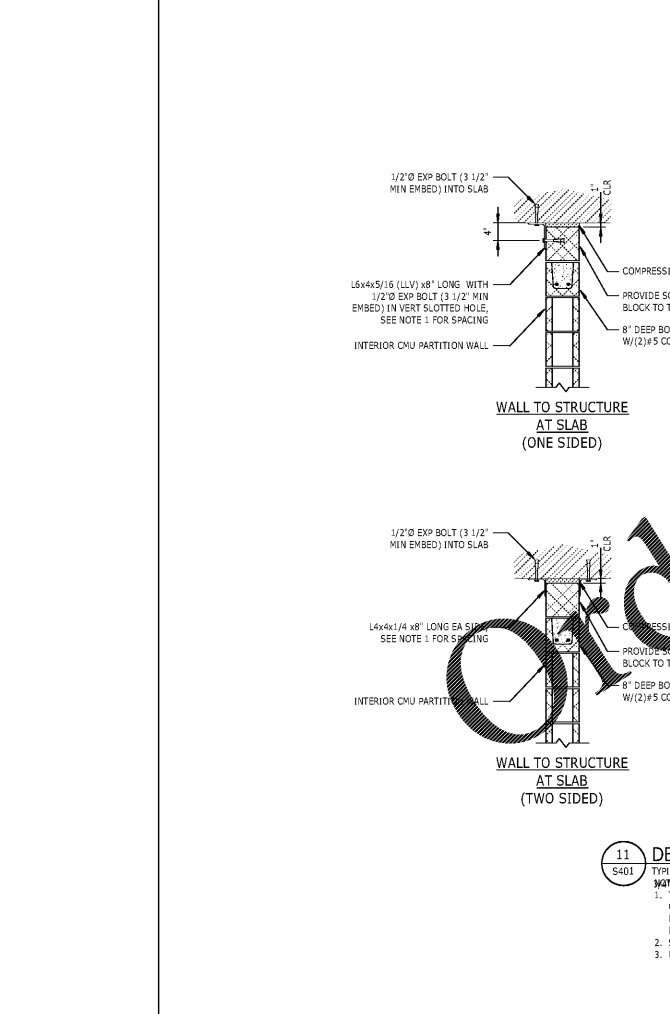
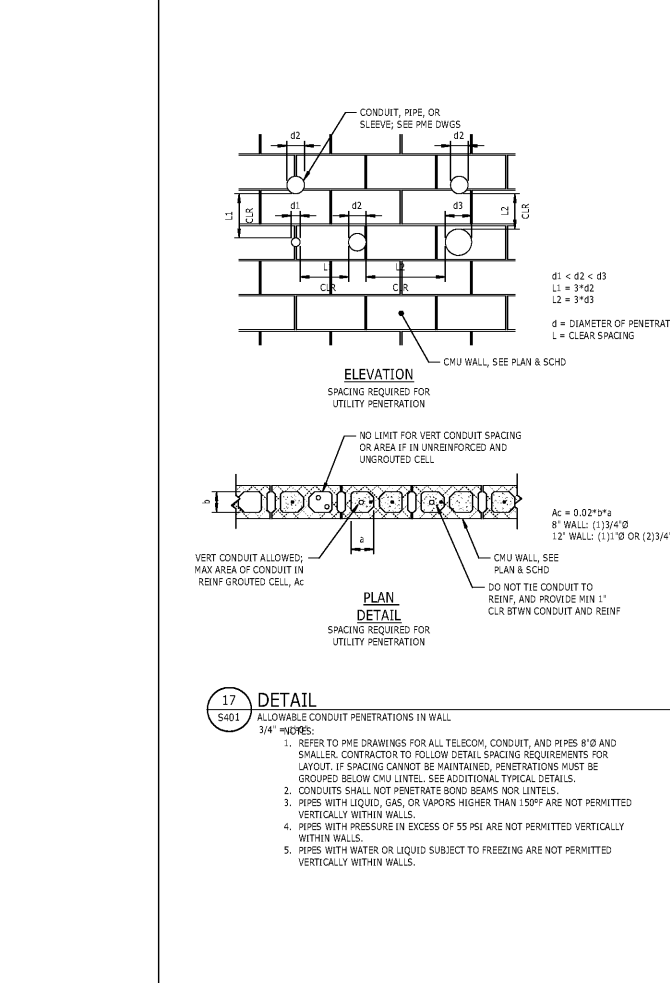
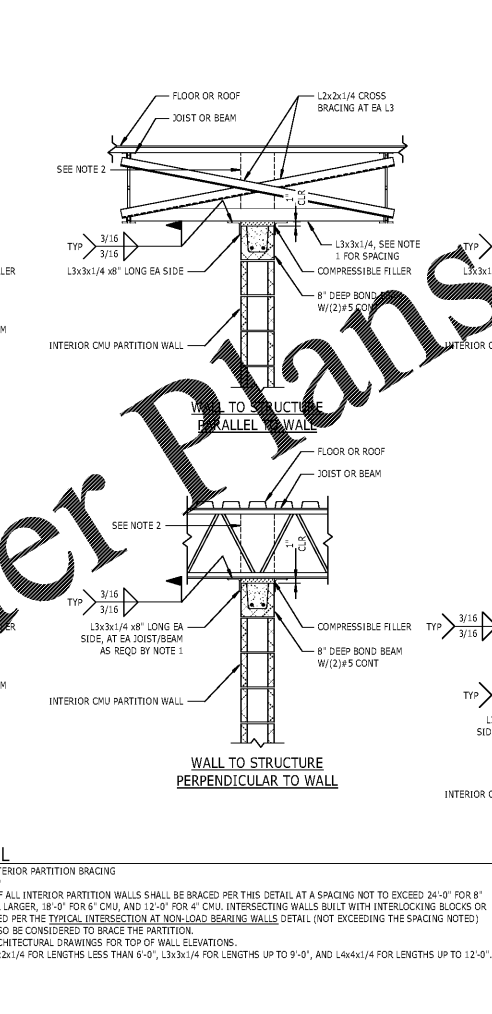
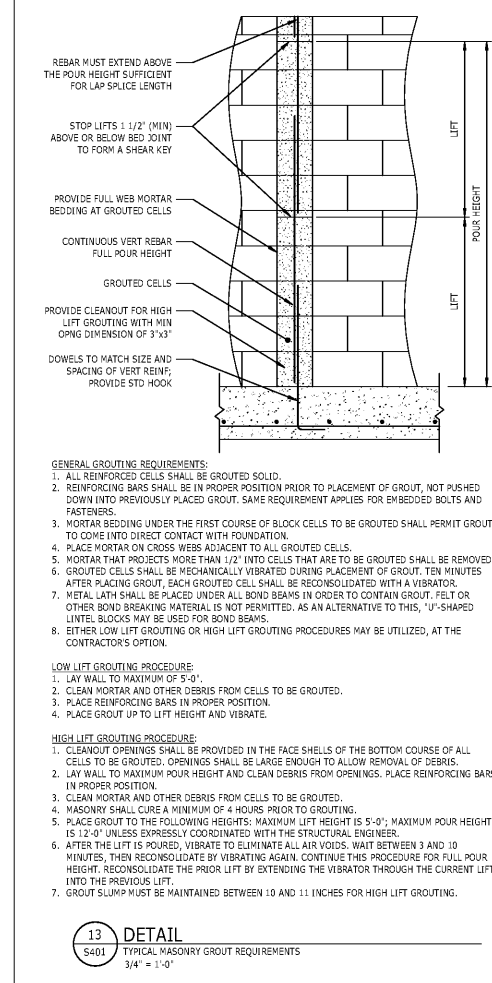
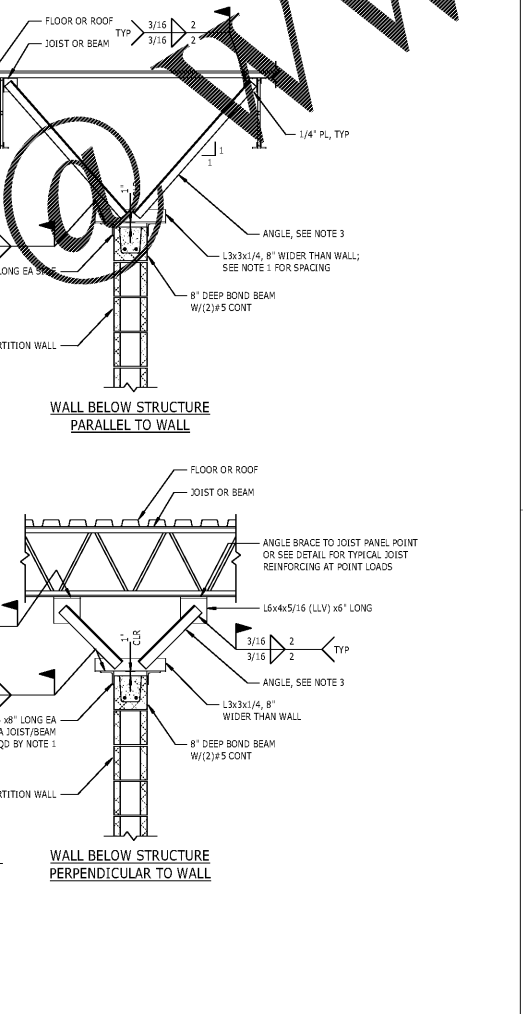
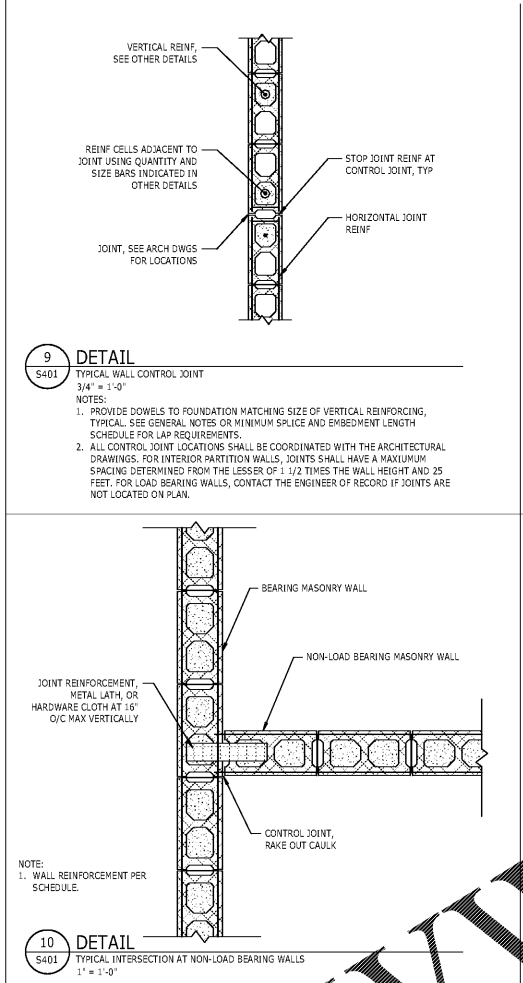


MINIMUM SPLICE AND EMBEDMENT LENGTH SCHEDULE

| BAR SIZE | LAP SPLICE |
|----------|------------|
| #3 | 18" |
| #4 | 24" |
| #5 | 30" |
| #6 | 36" |
| #7 | 42" |
| #8 | 48" |

MASONRY WALL SCHEDULE

| BRACED WALL HEIGHT | VERTICAL REINFORCING | | HORIZONTAL REINFORCING |
|-----------------------|----------------------|----------------------|-------------------------|
| | VERTICAL REINFORCING | END WALL REINFORCING | |
| UP TO 16'-0" | #4@48"OC | (1)#4 | 9 GA LADDER TYPE @16"OC |
| OVER 16'-0" TO 30'-0" | #5@40"OC | (1)#6 | 9 GA LADDER TYPE @16"OC |
| OVER 30'-0" | N/A | N/A | 9 GA LADDER TYPE @16"OC |
| CMU SW | #5@40"OC | (2)#5 | 9 GA LADDER TYPE @16"OC |



11 DETAIL
S401 TYPICAL INTERIOR PARTITION BRACING
3/4" = 1'-0"

- TOPS OF ALL INTERIOR PARTITION WALLS SHALL BE BRACED PER THIS DETAIL AT A SPACING NOT TO EXCEED 24'-0" FOR 8" CMU OR LARGER, 18'-0" FOR 6" CMU, AND 12'-0" FOR 4" CMU. INTERSECTING WALLS BUILT WITH INTERLOCKING BLOCKS OR DETAILED PER THE TYPICAL INTERSECTION AT NON-LOAD BEARING WALLS DETAIL (NOT EXCEEDING THE SPACING NOTED) MAY ALSO BE CONSIDERED TO BRACE THE PARTITION.
- SEE ARCHITECTURAL DRAWINGS FOR TOP OF WALL ELEVATIONS.
- USE 1/2x2x1/4 FOR LENGTHS LESS THAN 6'-0", 1/3x3x1/4 FOR LENGTHS UP TO 9'-0", AND 1/4x4x1/4 FOR LENGTHS UP TO 12'-0".