

RENOVATION AND ADDITION FOR

ABERDEEN POLICE DEPARTMENT

804 N. Sandhills Blvd.  
Aberdeen, NC 28315



CONCRETE FOUNDATION SECTIONS

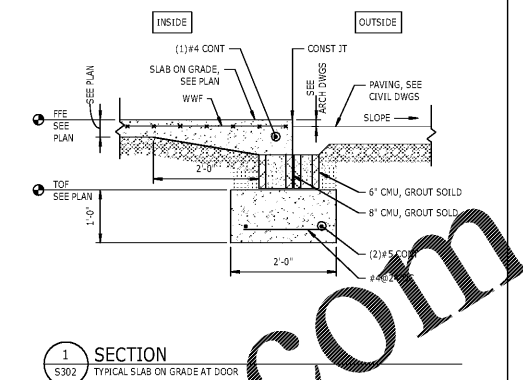
DATE: 10.25.19  
PROJECT NO: 18062

REVISIONS  
NO. DATE DESCRIPTION:

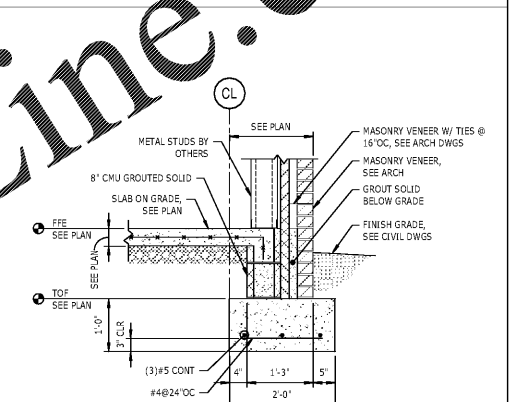
THIS DRAWING IS THE PROPERTY OF ADW ARCHITECTS, P.A. AND SHALL NOT BE REPRODUCED OR COPIED IN WHOLE OR PART. IT SHALL NOT BE USED ON ANY OTHER PROJECT OR GIVEN TO ANY OTHER COMPANY OR AGENCY WITHOUT THE CONSENT OF ADW ARCHITECTS, P.A.

SHEET NUMBER

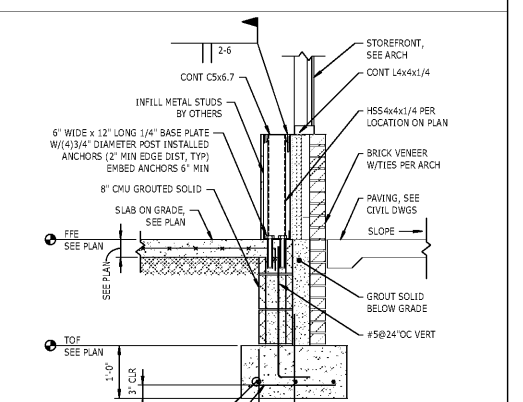
S302



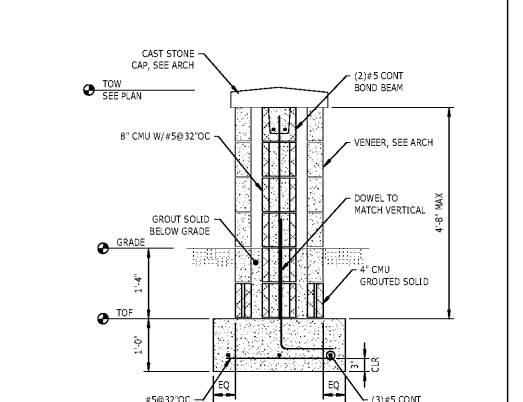
1 SECTION  
S302 3/4" = 1'-0"



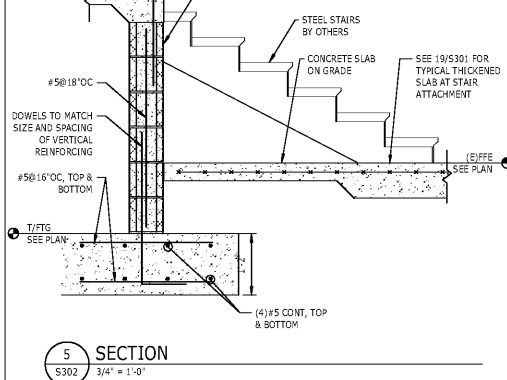
2 SECTION  
S302 3/4" = 1'-0"



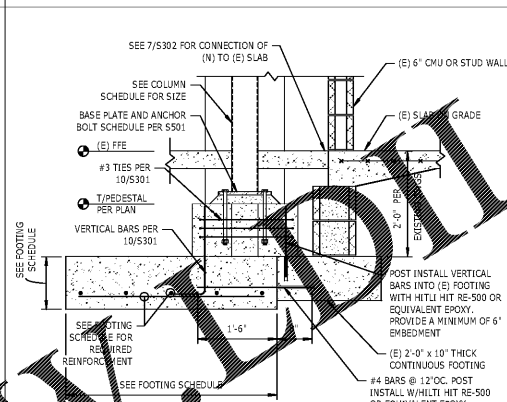
3 SECTION  
S302 3/4" = 1'-0"



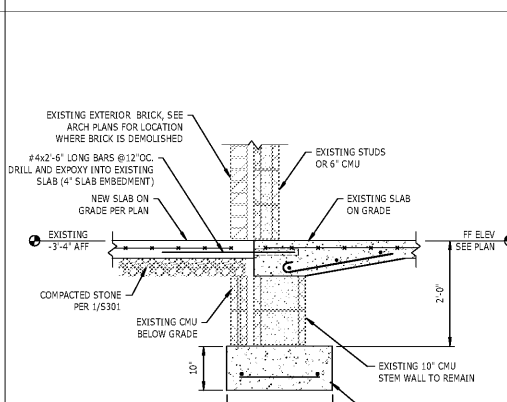
4 SECTION  
S302 3/4" = 1'-0"



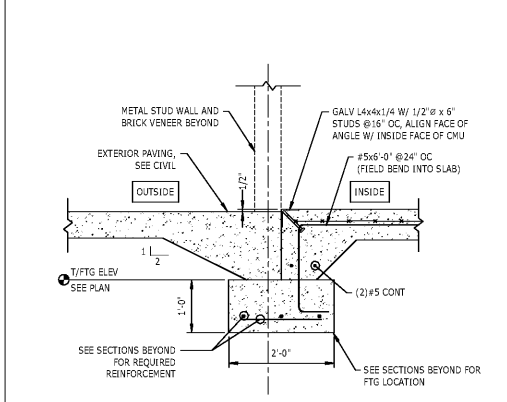
5 SECTION  
S302 3/4" = 1'-0"



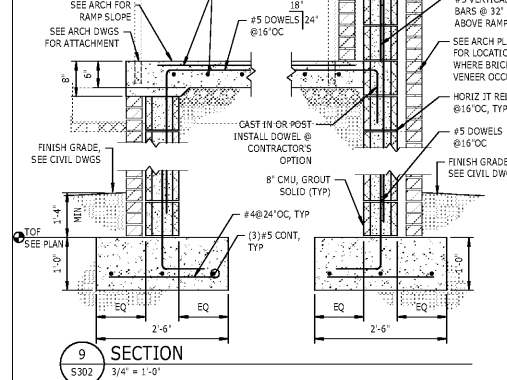
6 SECTION  
S302 3/4" = 1'-0"



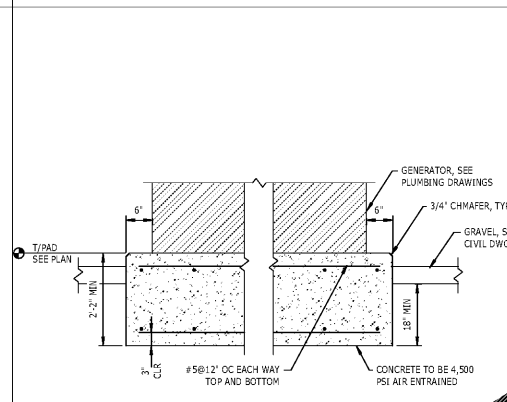
7 SECTION  
S302 3/4" = 1'-0"



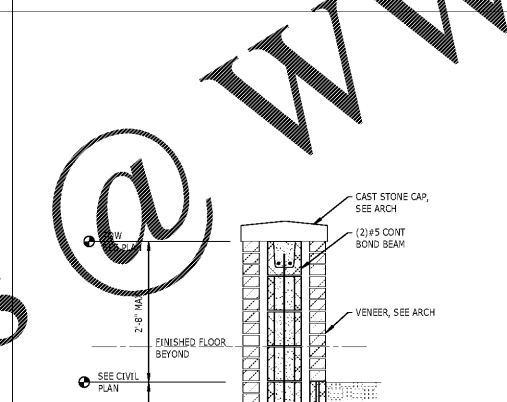
8 SECTION  
S302 3/4" = 1'-0"



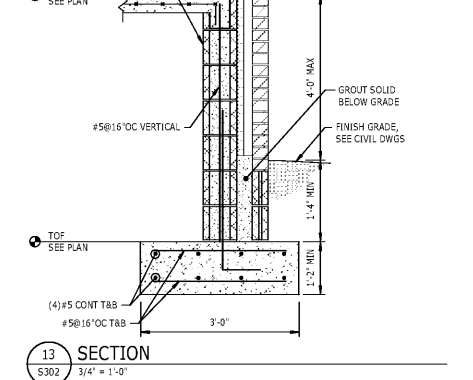
9 SECTION  
S302 3/4" = 1'-0"



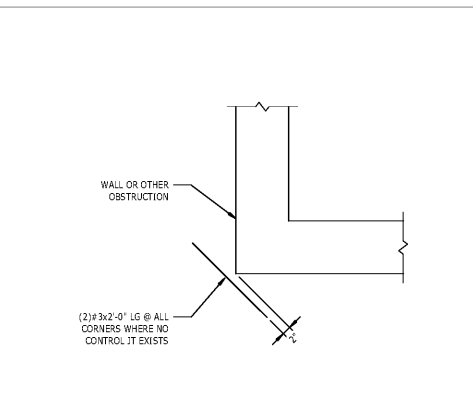
10 SECTION  
S302 3/4" = 1'-0"



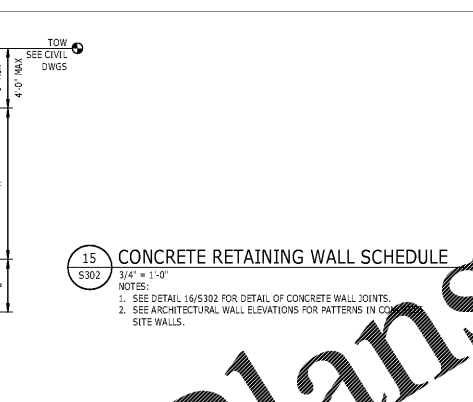
11 SECTION  
S302 3/4" = 1'-0"



13 SECTION  
S302 3/4" = 1'-0"



14 SECTION  
S302 3/4" = 1'-0"

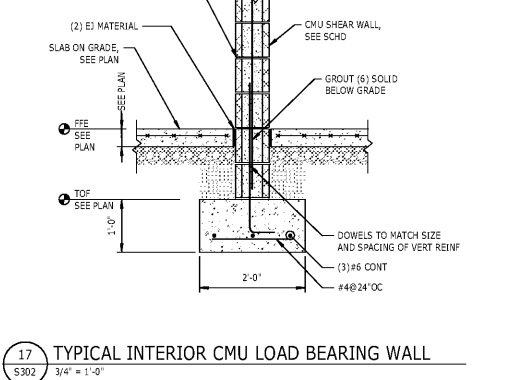


15 CONCRETE RETAINING WALL SCHEDULE  
S302 3/4" = 1'-0"

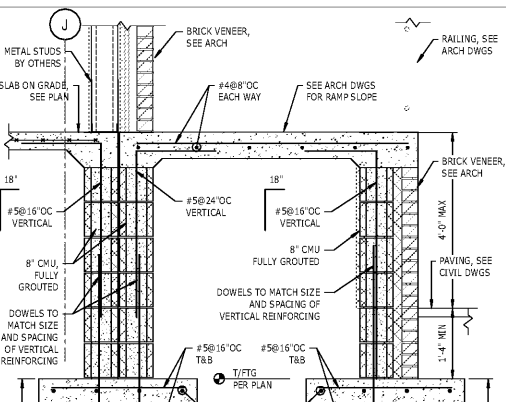
NOTES:  
1. SEE DETAIL 16/S302 FOR DETAIL OF CONCRETE WALL JOINTS.  
2. SEE ARCHITECTURAL WALL ELEVATIONS FOR PATTERNS IN CONCRETE WALLS.

16 TYPICAL JOINTS IN CONCRETE WALLS  
S302 3/4" = 1'-0"

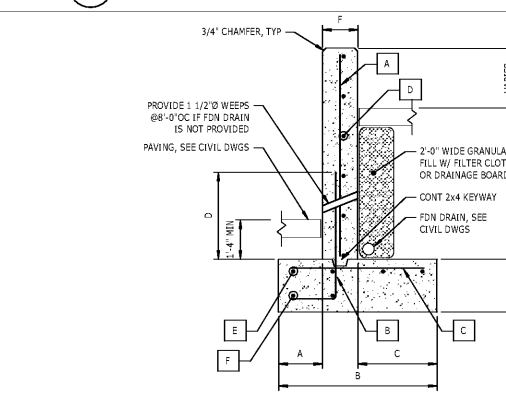
NOTES:  
1. FOAM JOINT FILLER TO BE CLOSED CELL NEOPRENE FOAM.  
2. SEALANT TO BE TRENCO DIMENIC OR EQUAL.  
3. SUBMIT SAMPLES OF JOINT FILLER & SEALANT FOR APPROVAL.  
4. ALL CHAMFERS TO BE ON EXPOSED FACE OF WALL.



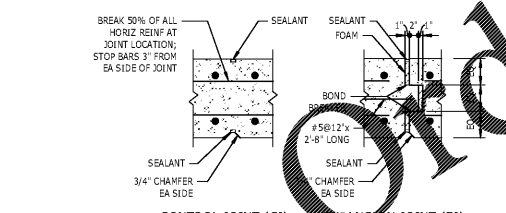
17 TYPICAL INTERIOR CMU LOAD BEARING WALL  
S302 3/4" = 1'-0"



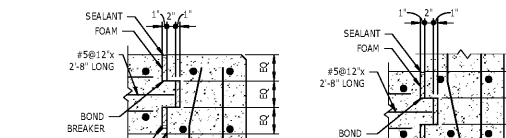
18 SECTION  
S302 3/4" = 1'-0"



| MAX HEIGHT<br>'-" | DIMENSIONS |       |        |       |       |    | REINFORCEMENT |          |          |          |       |       |
|-------------------|------------|-------|--------|-------|-------|----|---------------|----------|----------|----------|-------|-------|
|                   | A          | B     | C      | D     | E     | F  | A             | B        | C        | D        | E     | F     |
| 4'-0"             | 1'-0"      | 4'-0" | 2'-4"  | 1'-8" | 1'-0" | 8" | #4@12"OC      | #4@12"OC | #4@12"OC | #4@12"OC | (5)#4 | (2)#4 |
| 6'-0"             | 1'-6"      | 5'-0" | 2'-10" | 2'-0" | 1'-2" | 8" | #5@12"OC      | #5@12"OC | #4@12"OC | #4@12"OC | (6)#4 | (2)#4 |
| 8'-0"             | 1'-6"      | 7'-0" | 4'-10" | 2'-6" | 1'-4" | 8" | #6@8"OC       | #6@8"OC  | #5@12"OC | #5@12"OC | (8)#4 | (3)#4 |



16 TYPICAL JOINTS IN CONCRETE WALLS  
S302 3/4" = 1'-0"



16 TYPICAL JOINTS IN CONCRETE WALLS  
S302 3/4" = 1'-0"

16 TYPICAL JOINTS IN CONCRETE WALLS  
S302 3/4" = 1'-0"

Order Plans

@ WWW.ADWLine.com