

STEWART

101 N TRYON ST SUITE 1100 CHARLOTTE, NC 28202 T 704.334.7925 FIRM LICENSE #C-1513 519957

RENOVATION AND ADDITION FOR

ABERDEEN POLICE DEPARTMENT

804 N. Sandhills Blvd.
Aberdeen, NC 28315



ROOF FRAMING PLAN

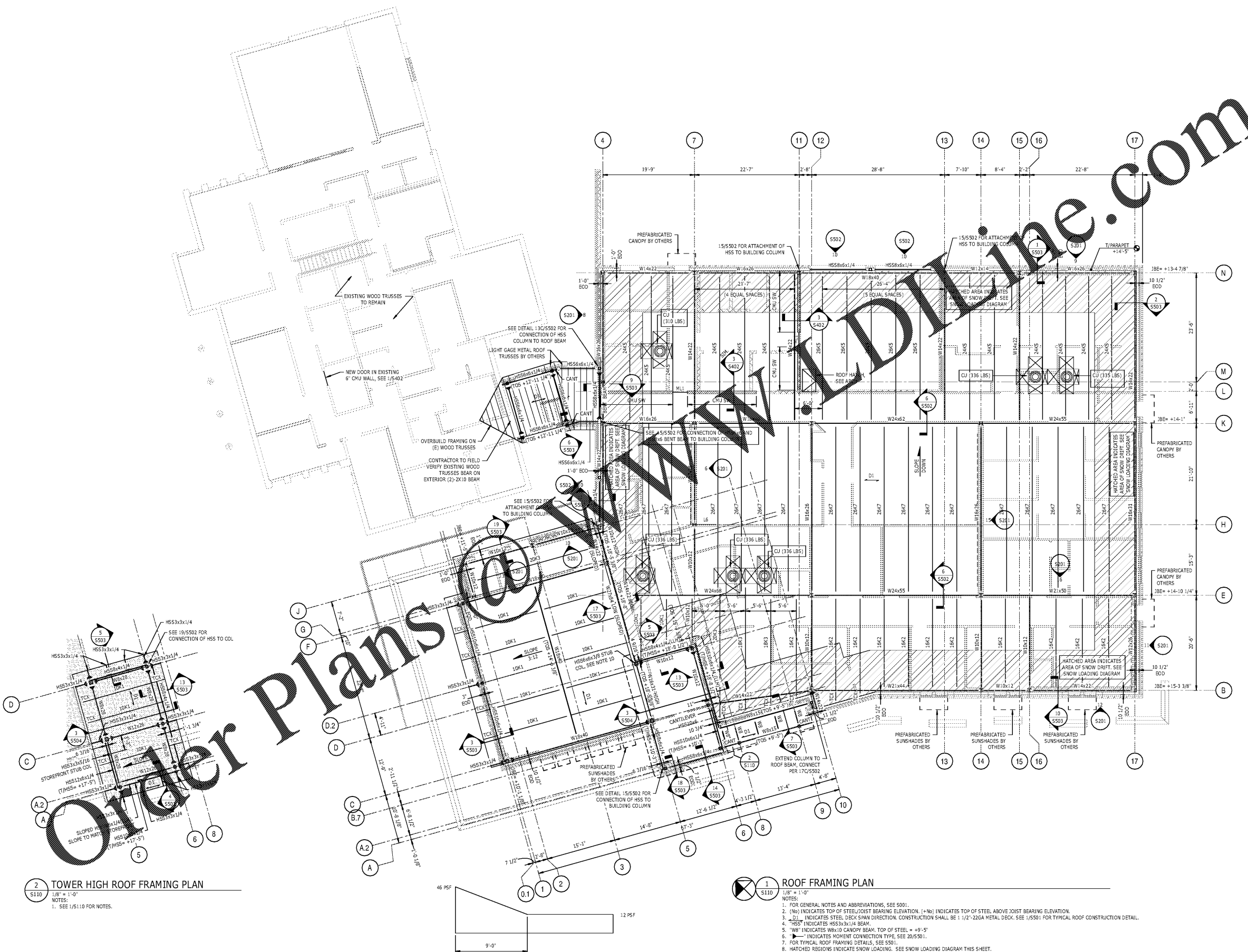
DATE: 10.25.19
PROJECT NO: 18062

REVISIONS
NO. DATE DESCRIPTION:

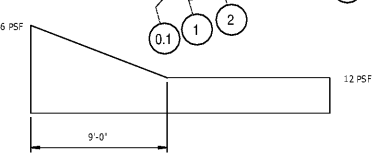
THIS DRAWING IS THE PROPERTY OF ADW ARCHITECTS, P.A. AND SHALL NOT BE REPRODUCED OR COPIED IN WHOLE OR PART. IT SHALL NOT BE USED ON ANY OTHER PROJECT OR GIVEN TO ANY OTHER COMPANY OR AGENCY WITHOUT THE CONSENT OF ADW ARCHITECTS, P.A.

SHEET NUMBER

S110



2 TOWER HIGH ROOF FRAMING PLAN
1/8" = 1'-0"
NOTES:
1. SEE 1/5.1.10 FOR NOTES.



SNOW LOADING DIAGRAM

1 ROOF FRAMING PLAN
1/8" = 1'-0"
NOTES:
1. FOR GENERAL NOTES AND ABBREVIATIONS, SEE 5001.
2. (+No) INDICATES TOP OF STEEL/JOIST BEARING ELEVATION. (-No) INDICATES TOP OF STEEL ABOVE JOIST BEARING ELEVATION.
3. D₁ INDICATES STEEL DECK SPAN DIRECTION. CONSTRUCTION SHALL BE 1 1/2" x 22GA METAL DECK. SEE 1/5.501 FOR TYPICAL ROOF CONSTRUCTION DETAIL.
4. "HSS" INDICATES HSS3x3x1/4 BEAM.
5. "WB" INDICATES WB10 CANOPY BEAM. TOP OF STEEL = +9'-5".
6. — indicates MOMENT CONNECTION TYPE. SEE 20/5501.
7. FOR TYPICAL ROOF FRAMING DETAILS, SEE 5501.
8. HATCHED REGIONS INDICATE SNOW LOADING. SEE SNOW LOADING DIAGRAM THIS SHEET.
9. "TCX" INDICATES TOP CHORD EXTENSION.
10. SEE DETAIL 5/5502 FOR CONNECTION OF STUB COLUMN TO LOW BEAM.
11. SEE 5501 FOR STEEL COLUMN SCHEDULE.
12. "ML" INDICATES LINTEL. SEE 2/5.402 FOR SCHEDULE.
13. "L6" INDICATES L6x3x3/8 ANGLE FROM COLUMN TO ADJACENT JOIST. FIELD WELD TO COLUMN AND JOIST TOP CHORD WITH 3/16" FILLET WELD.

Order Plans @ www.adwonline.com