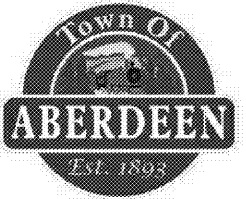


Order Plans @ [www.LDILine.com](http://www.LDILine.com)



A NEW POLICE FACILITY FOR  
**ABERDEEN POLICE DEPARTMENT**

804 N. Sandhills Blvd.  
 Aberdeen, NC 28315

**INTERIOR ELEVATIONS**

DATE: 11-22-2019  
 PROJECT NO: 18062

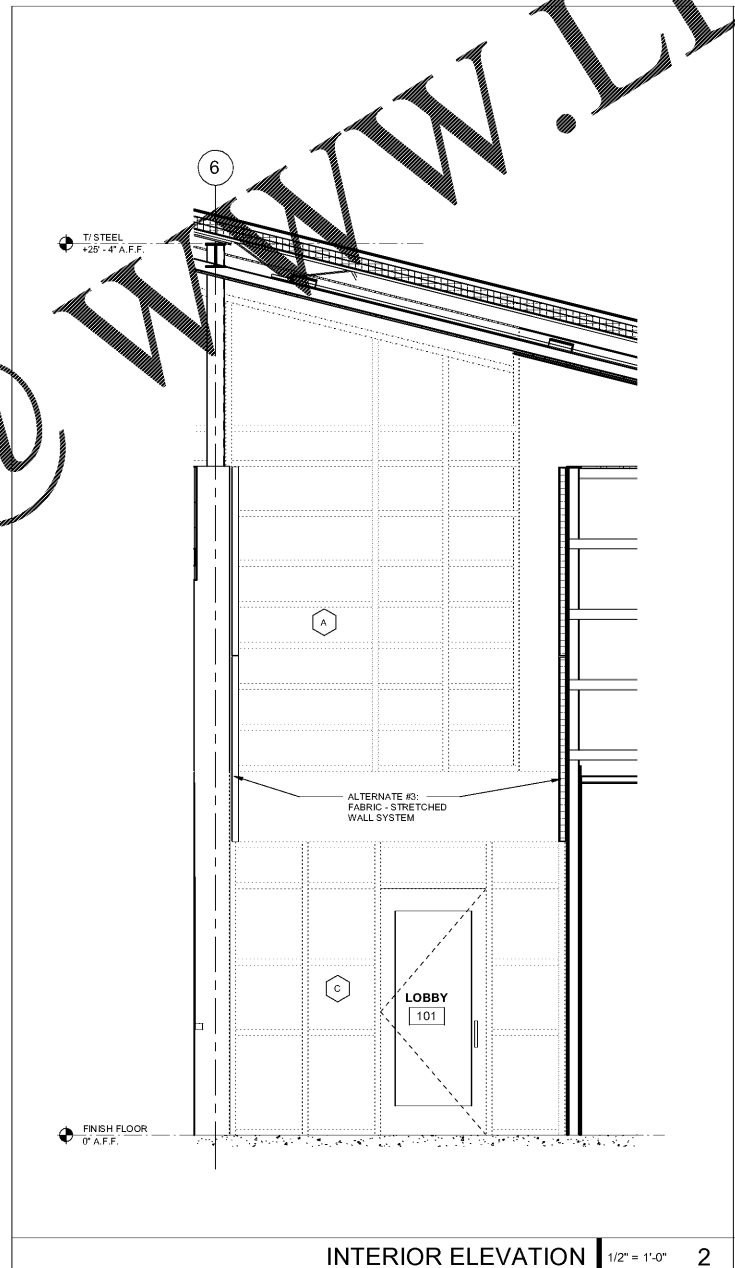
REVISIONS  
 NO. DATE DESCRIPTION:

THIS DRAWING IS THE PROPERTY OF ADW ARCHITECTS, P.A. AND SHALL NOT BE REPRODUCED OR COPIED IN WHOLE OR PART. IT SHALL NOT BE USED ON ANY OTHER PROJECT OR GIVEN TO ANY OTHER COMPANY OR AGENCY WITHOUT THE CONSENT OF ADW ARCHITECTS, P.A.

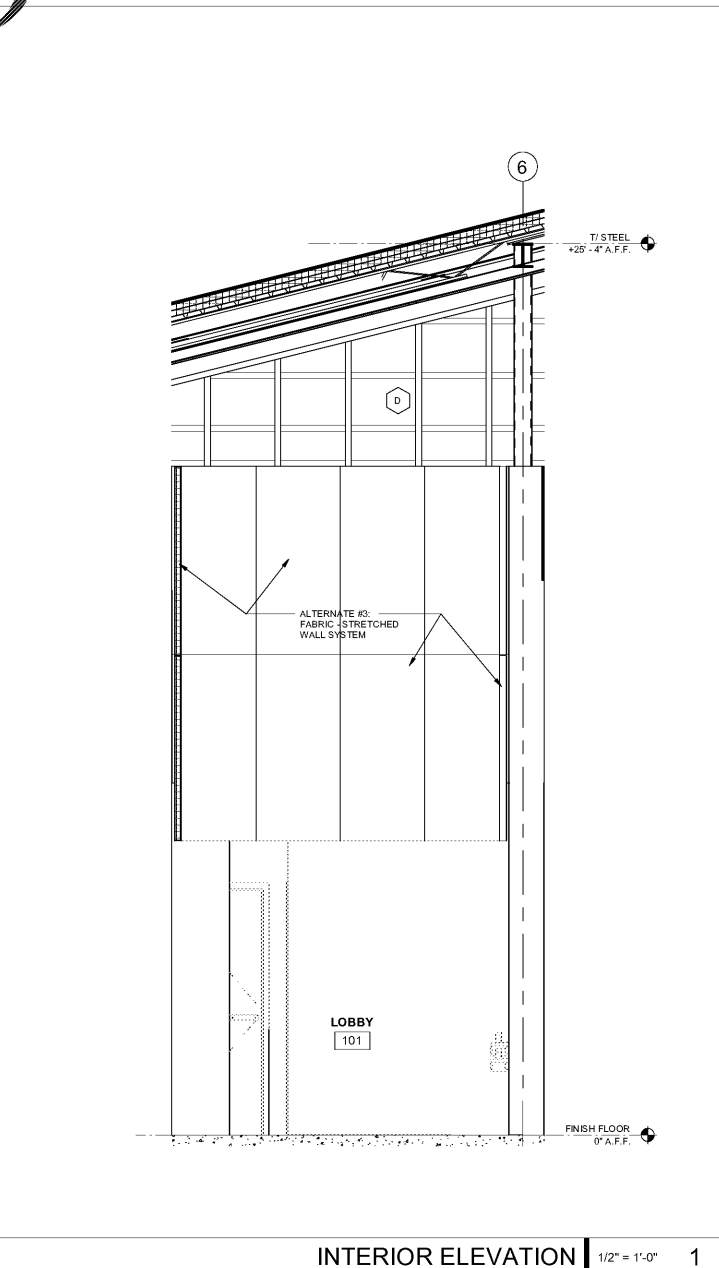


SHEET NUMBER

**A503**



INTERIOR ELEVATION 1/2" = 1'-0" 2



INTERIOR ELEVATION 1/2" = 1'-0" 1