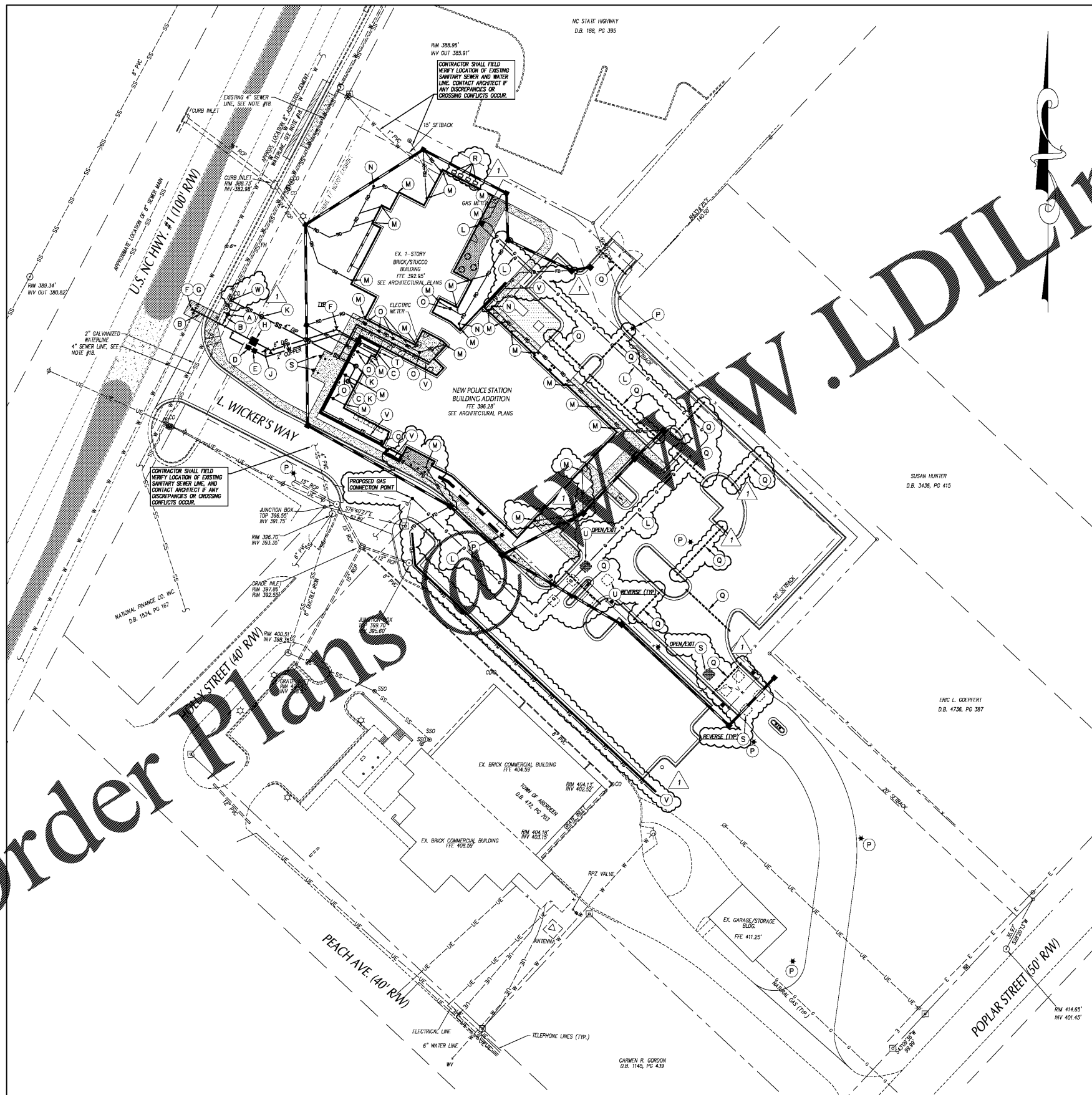


Order Plans



GENERAL NOTES-UTILITY

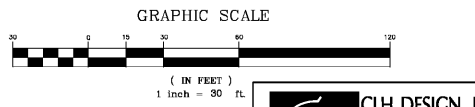
1. ALL CONSTRUCTION SHALL BE IN ACCORDANCE WITH ALL TOWN OF ABERDEEN AND NCSC STANDARDS, SPECIFICATIONS AND DETAILS.
2. INSTALL WATERMANS WITH A COVER OF NO LESS THAN 3'-FT.
3. INSTALL SEWER MAINS WITH A COVER OF NO LESS THAN 3'-FT. FINISH GRADE IN NON-TRAFFIC AREAS, 4'-FT TO FINISH GRADE IN TRAFFIC AREAS.
4. INSTALL ALL UTILITIES TO PROVIDE REQUIRED CLEARANCES AS INDICATED IN THE SPECIFICATIONS.
5. WATERLINES AND SEWER MAINS SHALL BE INSTALLED WITH MINIMUM VERTICAL CLEARANCE OF 10'-FT.
6. SEWER MAINS SHALL BE INSTALLED WITH MINIMUM VERTICAL CLEARANCE OF 24'-IN TO STORM DRAINAGE PIPES.
7. COORDINATE AND SCHEDULE INSTALLATION OF UTILITIES WITH OTHER PRIME CONTRACTORS, UTILITY COMPANIES AND OTHER TRADES INCLUDING BUT NOT LIMITED TO: NATURAL GAS, ELECTRICITY, TELEPHONE AND CABLE.
8. VERIFY EXISTING CONDITIONS AND CONNECTIONS TO EXISTING UTILITIES PRIOR TO CONSTRUCTION. NOTIFY ARCHITECT IF ANY DISCREPANCIES ARE DISCOVERED.
9. CONTRACTOR IS RESPONSIBLE FOR ALL DAMAGES DURING CONSTRUCTION AND SHALL MAKE REPAIRS AT HIS OWN EXPENSE TO THE OWNER.
10. ALL CONSTRUCTION SHALL COMPLY WITH ALL APPLICABLE NCSC AND OSHA REQUIREMENTS.
11. CONTRACTOR SHALL PROVIDE AN AS-BUILT SURVEY OF ALL UTILITY AND STORM DRAINAGE LINES FOLLOWING CONSTRUCTION.
12. CONTRACTOR SHALL PHASE DEMOLITION AND NEW CONSTRUCTION TO ENSURE UNINTERRUPTED ACCESS AND UTILITY SERVICE TO ADJACENT FACILITIES. COORDINATE SHORT-TERM, OFF-HOUR, TEMPORARY SHUT-DOWNS WITH THE OWNER.
13. SEE GENERAL NOTES ON EXISTING CONDITIONS AND DEMOLITION PLAN FOR REQUIREMENTS FOR REMOVAL AND PATCHING OF PAVEMENT FOR UTILITY INSTALLATION.
14. ALL ROOF DRAINS SHALL BE 6" PVC (SCH 40) @ 1/4" MIN. SLOPE UNLESS INDICATED OTHERWISE. USE DUCTILE IRON WHEN COVER IS LESS THAN 24'-IN.
15. ALL SANITARY SEWER SERVICES SHALL BE 4" PVC (SCH 40) @ 1/4" MIN. SLOPE UNLESS INDICATED OTHERWISE. USE DUCTILE IRON WHEN COVER IS LESS THAN 24'-IN.
16. ALL CONDENSATE LINES SHALL BE CONNECTED TO STORM DRAINAGE SYSTEM.
17. NO WORK SHALL BE PERFORMED ON RIGHT-OF-WAYS OR ADJACENT PROPERTIES UNTIL THE OWNER NOTICES CONTRACTOR IN WRITING OF PROCEEDMENT OF APPROPRIATE PERMITS, EASEMENTS, AGREEMENTS, OR RIGHTS-OF-WAY.
18. LOCATION OF EXISTING UTILITIES AT APPROXIMATE US NC HWY #1 RIGHT OF WAY BASED ON TOWN OF ABERDEEN RECORDS. CONTRACTOR TO FIELD LOCATE AND DETERMINE PIPE SIZE AND MATERIAL PRIOR TO CONSTRUCTION. CONTRACTOR SHALL CONTACT ARCHITECT IF DISCREPANCIES OCCUR.

UTILITY LEGEND

	EXISTING	PROPOSED
ELECTRICAL (OVERHEAD)	---	E
ELECTRICAL (UNDERGROUND)	---	UE
FOUNDATION DRAIN	---	FD
GAS	---	G
SANITARY SEWER	---	SS
TELEPHONE (OVERHEAD)	---	T
TELEPHONE (UNDERGROUND)	---	UT
WATER	---	W
ROOF DRAIN	---	RD
FIRE PROTECTION	---	FP
STORM DRAIN	---	SD
TRENCH DRAIN	---	TD
CONDUIT	---	---
LIGHT POLE	LP	*
UTILITY POLE	PP	*
MANHOLE	MH	●
CLEAN OUT	CO	○
DROP INLET/CATCH BASIN	DI, CB	■
FIRE HYDRANT	FH	+
WATER VALVE	WV	+
POST INDICATOR VALVE (PIV)	PIV	+
FIRE DEPARTMENT CONNECTION (FDC)	FDC	+
THRUST BLOCKING	---	---

KEY NOTES

- (A) FIRE HYDRANT ASSEMBLY, SEE DETAIL SHEET C705.
- (B) GATE VALVE AND VALVE BOX, SEE DETAIL SHEET C705.
- (C) EXTEND UTILITY TO WITHIN 5'-0" OF BUILDING WALL OR AS INDICATED ON PLUMBING PLANS. REFER TO PLUMBING PLANS FOR LOCATION AND INVERTS.
- (D) 2" DOMESTIC WATER METER, SEE DETAIL SHEET C705.
- (E) 1" REDUCED PRESSURE BACKFLOW ASSEMBLY (RPBA) WITH HEATED ENCLOSURE, SEE DETAIL SHEET C705. SEE ELECTRICAL PLANS FOR ADDITIONAL INFORMATION.
- (F) THRUST BLOCKING, TYP. SEE DETAIL SHEET C705.
- (G) 6" X 6" TAPPING SLEEVE AND VALVE ASSEMBLY, SEE DETAIL SHEET C705 AND SPECS.
- (H) 1" REDUCED PRESSURE DETECTOR ASSEMBLY (RPDA), SEE DETAIL SHEET C705.
- (I) FIRE DEPARTMENT CONNECTION, SEE DETAIL SHEET C705.
- (J) SANITARY SEWER CLEANOUT, TYP. SEE DETAIL SHEET C705.
- (K) APPROXIMATE LOCATION GAS METER AND GAS SERVICE LINES. SEE PLUMBING PLANS FOR ADDITIONAL INFORMATION. COORDINATE SERVICE LINE INSTALLATION WITH GAS COMPANY.
- (L) DOWNSPOUT CONNECTION, SEE DETAIL SHEET C705.
- (M) CLEANOUT, SEE DETAIL SHEET C705.
- (N) MANHOLE, SEE DETAIL SHEET C705.
- (O) RAIN DRAIN, SEE DETAIL SHEET C705.
- (P) DUNE ENERGY LIGHT POLE, SEE DUNE ENERGY LIGHTING PLAN.
- (Q) CONCRETE 24" MINIMUM COVER, 3'-0" EXTENSIVE BACK OF CURB/EDGE OF PAVEMENT. CONTRACTOR SHALL COORDINATE SIZE, MATERIAL AND FINAL LOCATIONS WITH UTILITY COMPANIES AND OTHER TRADES PER DUNE ENERGY'S STANDARDS AND GENERAL REQUIREMENTS.
- (R) MECHANICAL EQUIPMENT, SEE MECHANICAL PLANS.
- (S) FLAGPOLE UPLIGHTS, SEE ELECTRICAL PLANS.
- (T) EXTEND FIRE PROTECTION SERVICE TO 12" ABOVE FINISHED FLOOR. COORDINATE EXACT LOCATION WITH FIRE PROTECTION CONTRACTOR. SEE STANDARD FIRE SERVICE INSTALLATION AT BUILDING DETAIL ON SHEET C705.
- (U) APPROXIMATE LOCATION OF VEHICLE DETECTING LOOPS. SEE GATE OPERATOR SPECIFICATIONS, ELECTRICAL PLANS, AND CONSULT WITH GATE OPERATOR MANUFACTURER FOR ADDITIONAL INFORMATION.
- (V) FOUNDATION DRAINS, SEE ARCHITECTURAL PLANS.
- (W) CONNECT TO EXISTING SANITARY SEWER WITH 4"-IN LATERAL SADDLE. CONTRACTOR SHALL FIELD VERIFY EXISTING SANITARY SEWER MATERIAL PRIOR TO CONSTRUCTION. SEE SHEET C705.



adwarchitects
environments for life
architecture planning interiors
2815 COLISEUM CENTRE DRIVE
SUITE 500
CHARLOTTE, NORTH CAROLINA 28217
P704.379.1919
F704.379.1920
www.adwarchitects.com



RENOVATION AND ADDITION

ABERDEEN POLICE DEPARTMENT

ABERDEEN, NORTH CAROLINA

SITE UTILITY PLAN

DATE: 12.20.2019
PROJECT NO: 18062

REVISIONS
NO. DATE DESCRIPTION
1 12-20-2019 COORDINATION

THIS DRAWING IS THE PROPERTY OF ADW ARCHITECTS, P.A. AND SHALL NOT BE REPRODUCED OR COPIED IN WHOLE OR PART. IT SHALL NOT BE USED ON ANY OTHER PROJECT OR GIVEN TO ANY OTHER COMPANY OR AGENCY WITHOUT THE CONSENT OF ADW ARCHITECTS, P.A.



SHEET NUMBER
C500

CLH DESIGN, P.A.
400 Regency Forest Drive
Suite 1200
Cary, North Carolina 27518
Phone: (919)519-9718
Fax: (919)519-7018
LA: C-106, PE: C-1595