



1920 Hwy. 54, Suite 700, Durham, NC 27713
Ph. 919-544-1836 Fax 919-544-2540 License: C-1813

RENOVATIONS TO :

ABC STORE

HOLLOWAY ST. DURHAM, NC

PROJECT NUMBER 19-063

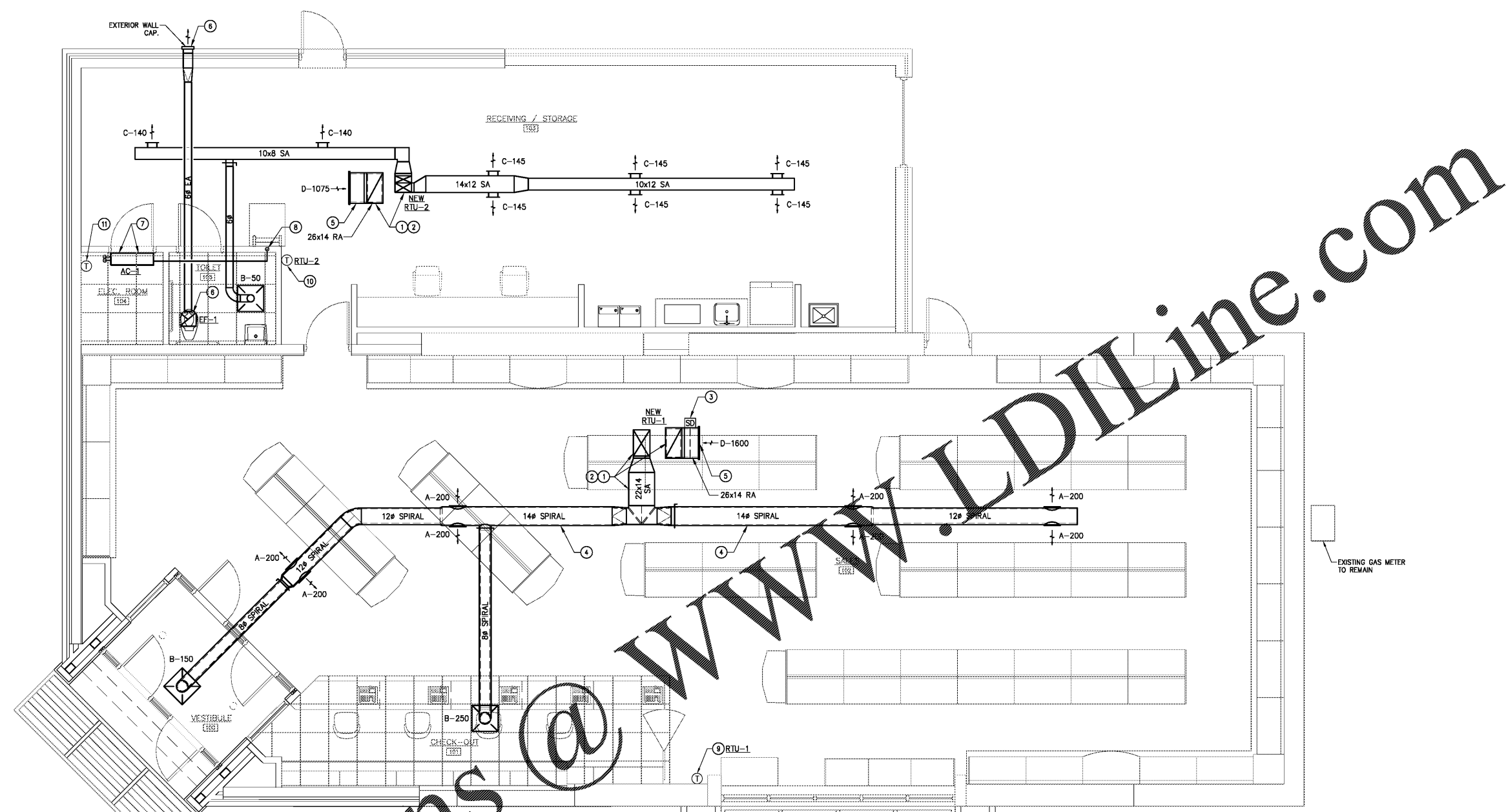
HVAC Renovation Plan

DTW
Architects & Planners, Ltd.
229 North Gregson Street
Durham, NC 27701
919.317.4020

CONSTRUCTION DOCUMENTS

Revisions	
Drawn	BDT
Checked	CTC
Date	12/18/2019
Sheet	

M2.1
Of



COORDINATION NOTES

- M.C. SHALL COORDINATE WITH E.C. IN THE FIELD TO ENSURE THAT THE SPIRAL LIGHT RODS DOES NOT INTERFERE WITH THE LOCATION AND MOUNTING HEIGHT OF THE LIGHT LUMEN.
- M.C. SHALL COORDINATE THE EXACT LOCATION OF EXTERIOR EXHAUST WALL CAP THAT SERVES BATHROOM EXHAUST FAN (EF-1).
- M.C. SHALL COORDINATE LOCATION OF OUTDOOR CONDENSING UNIT (CU-1) OF THE DUCTLESS SPLIT SYSTEM LOCATED ON THE ROOF WITH ARCHITECT AND G.C. PRIOR TO INSTALLATION AND ROOF PENETRATIONS OF THE REFRIGERANT LINES. SEE SHEET M3.1 FOR CLARIFICATION.

1 HVAC Renovation Plan
SCALE: 1/4" = 1'-0"

KEYED RENOVATION NOTES

- M.C. SHALL ROUTE SUPPLY AND RETURN DUCT UP TO NEW RTU. TRANSITION DUCTS AS REQUIRED IN THE VERTICAL POSITION TO ROOF CURB OPENING. RETURN DUCT SHALL HAVE 1" INTERNAL DUCT LINER. DO NOT OVER SIZE RETURN DUCT, DUCT HAS BEEN SIZED TO ACCOMMODATE DUCT LINER.
- SUPPLY AND RETURN FOR NEW RTU'S SHALL BE PAINT GRIP TYPE AS DUCT WORK IN THIS AREA WILL BE EXPOSED. RECTANGULAR DUCT SHALL BE INSULATED WITH 1" THICK, 3 LBS. DUCT BOARD WITH CANVAS JACKET.
- M.C. SHALL INSTALL DUCT MOUNTED SMOKE DETECTOR IN RETURN DUCT OF NEW RTU-1.
- M.C. SHALL INSTALL DOUBLE-WALL 1" INSULATED SPIRAL AS SHOWN ON PLAN. (SEE SPECIFICATIONS ON SHEET M3.1) DUCTWORK SHALL BE PAINT GRIP TYPE. DIMENSIONS SHOWN ARE THE INSIDE DIMENSIONS.
- M.C. SHALL INSTALL SIDEWALL RETURN GRILLE ON THE END OF THE RETURN DUCT AS SHOWN. REFER TO AIR DISTRIBUTION SCHEDULE FOR MORE INFORMATION.
- M.C. SHALL INSTALL NEW CEILING MOUNTED EXHAUST FAN AND ROUTE EXHAUST DUCT AS SHOWN TO EXTERIOR WALL CAP. WALL PENETRATION FOR WALL CAP SHALL BE SEALED AND CAULKED WEATHER TIGHT. EXHAUST FAN SHALL BE INTERLOCKED WITH LIGHT SWITCH WITH TIMER. COORDINATE WITH E.C.

KEYED RENOVATION NOTES

- M.C. SHALL INSTALL DUCTLESS SPLIT SYSTEM (AC-1) ABOVE DOOR IN ELECTRICAL ROOM. ROUTE REFRIGERANT LINES UP TO CONDENSING UNIT (CU-1) LOCATED ON THE ROOF. INSULATE BOTH REFRIGERANT LINES WITH E-FLEX GUARD MODEL 72-B SERIES.
- M.C. SHALL ROUTE SLOPED CONDENSATE DRAIN FROM INDOOR UNIT (AC-1) TO THE TOILET ROOM AS SHOWN. TURN CONDENSATE DOWN WALL AND EXTEND FROM WALL 6" ABOVE FLOOR AND TURN DOWN INDIRECT ON FLOOR DRAIN. SUPPORT WITH STANDOFF BRACKETS - SEE PLUMBING DRAWINGS FOR CLARIFICATION.
- M.C. SHALL INSTALL SEVEN (7) DAY PROGRAMMABLE THERMOSTAT AT 60° A.F.F. WITH INSULATED BASE. THERMOSTAT SHALL BE LABELED RTU-1.
- M.C. SHALL INSTALL SEVEN (7) DAY PROGRAMMABLE THERMOSTAT AT 60° A.F.F. THERMOSTAT SHALL BE LABELED RTU-2.
- M.C. SHALL INSTALL THERMOSTAT AT 60° A.F.F. FOR AC-1. COORDINATE WITH E.C. FOR PROPER LOCATION TO ENSURE THAT IT DOES NOT CONFLICT WITH ANY ELECTRICAL EQUIPMENT.

Order Plans @

