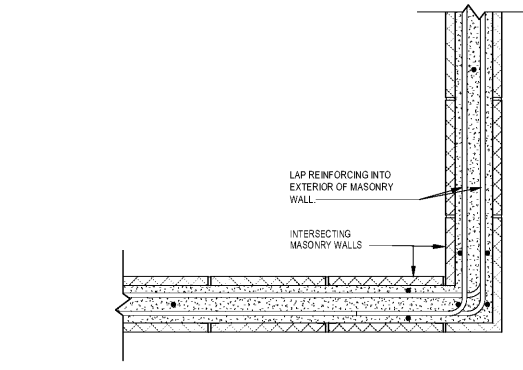
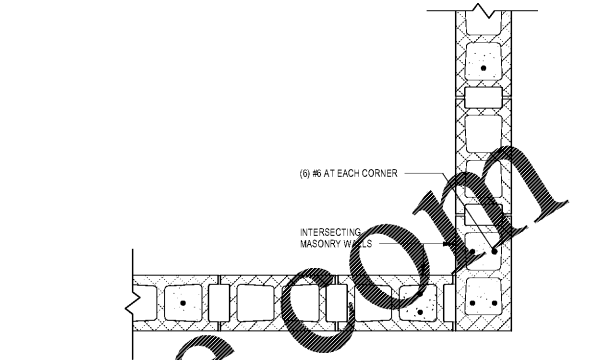


7 PRECAST LINTEL
 S4.01 1 1/2" = 1'-0"



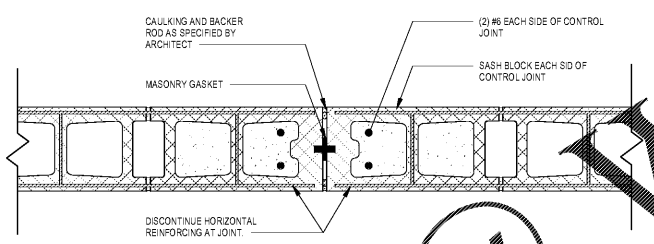
4 MASONRY CORNER - HORIZONTAL REINFORCING IN BOND BEAM
 S4.01 1" = 1'-0"



3 MASONRY CORNER - VERTICAL REINFORCING
 S4.01 1" = 1'-0"

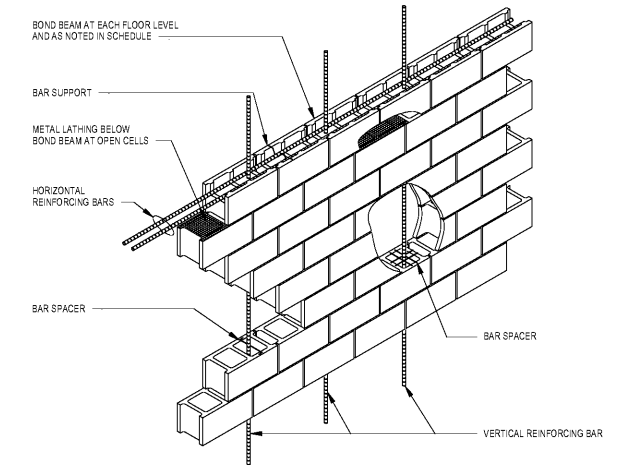
WALL MARK	WALL WIDTH	REINFORCING VERTICAL	BOND BEAM SPACING	REINFORCING HORIZONTAL	NOTES
MW01	8'	#6 AT 32"	8'	(2) #4	TYPICAL ALL WALLS, UNO

- GENERAL GROUTING REQUIREMENTS**
- ALL REINFORCED CELLS SHALL BE GROUTED.
 - REINFORCING BARS MUST BE IN PROPER POSITION PRIOR TO PLACEMENT OF GROUT, NOT PUSHED DOWN INTO PREVIOUSLY PLACED GROUT.
 - MORTAR JOINTS UNDER THE FIRST COURSE OF BLOCK CELLS TO BE GROUTED SHALL PERMIT GROUT TO COME INTO DIRECT CONTACT WITH FOUNDATION.
 - PLACE MORTAR CROSS WEBS ADJACENT TO ALL GROUTED CELLS.
 - MORTAR THICKNESS MORE THAN 1/2" INTO CELLS THAT ARE TO BE GROUTED MUST BE REMOVED.
 - GROUTED CELLS SHALL BE MECHANICALLY VIBRATED DURING PLACEMENT OF GROUT. TEN MINUTES AFTER PLACING GROUT, EACH GROUTED CELL SHALL BE MECHANICALLY VIBRATED WITH A VIBRATOR.
 - METAL LATHING SHALL BE PLACED UNDER ALL BOND BEAMS IN ORDER TO CONTAIN GROUT. FELT OR OTHER BOND BREAKING MATERIAL IS NOT PERMITTED.
 - EITHER LOW LIFT GROUTING OR HIGH LIFT GROUTING PROCEDURES MAY BE UTILIZED AT THE CONTRACTOR'S OPTION.
- LOW LIFT GROUTING PROCEDURE:**
- LAY WALL TO MAXIMUM OF 5'-0"
 - CLEAN MORTAR AND OTHER DEBRIS FROM CELLS TO BE GROUTED
 - PLACE REINFORCING BARS IN PROPER POSITION
 - PLACE GROUT UP TO LIFT HEIGHT AND VIBRATE
- HIGH LIFT GROUTING PROCEDURE**
- CLEANOUT OPENINGS SHALL BE PROVIDED IN THE FACE SHELLS OF THE BOTTOM COURSE OF ALL CELLS TO BE GROUTED. OPENINGS SHALL BE LARGE ENOUGH TO ALLOW REMOVAL OF DEBRIS.
 - LAY WALL TO MAXIMUM POUR HEIGHT AND CLEAN DEBRIS FROM OPENINGS. PLACE REINFORCING BARS IN PROPER POSITION.
 - CLEAN MORTAR AND OTHER DEBRIS FROM CELLS TO BE GROUTED
 - MASONRY SHALL CURE A MINIMUM OF 4 HOURS PRIOR TO GROUTING.
 - PLACE GROUT TO THE FOLLOWING HEIGHTS: MAXIMUM LIFT HEIGHT IS 5'-0"; MAXIMUM POUR HEIGHT IS 12'-0" UNLESS EXPRESSLY COORDINATED WITH THE STRUCTURAL ENGINEER.
 - AFTER THE LIFT IS POURED, VIBRATE TO ELIMINATE ALL AIR VOIDS. WAIT BETWEEN 3 AND 10 MINUTES, THEN RECONSOLIDATE BY VIBRATING AGAIN. CONTINUE THIS PROCEDURE FOR FULL POUR HEIGHT. RECONSOLIDATE THE PRIOR LIFT BY EXTENDING THE VIBRATOR THROUGH THE CURRENT LIFT INTO THE PREVIOUS LIFT.
 - GROUT SLUMP MUST BE MAINTAINED BETWEEN 10 AND 11 INCHES FOR HIGH LIFT GROUTING.



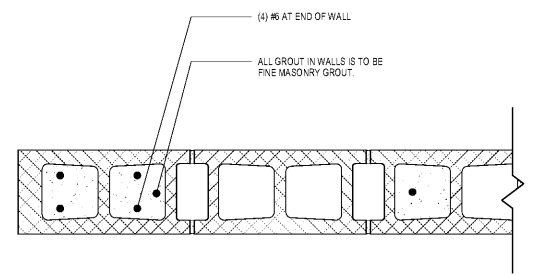
6 MASONRY CONTROL JOINT
 S4.01 1 1/2" = 1'-0"

2 MASONRY CONSTRUCTION
 S4.01 1/2" = 1'-0"

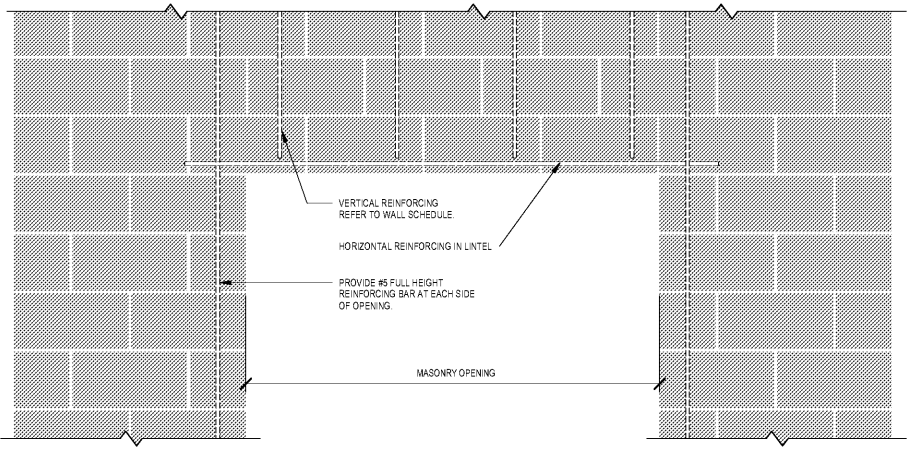


NOTE: TYPICAL HORIZONTAL JOINT REINFORCEMENT NOT SHOWN.

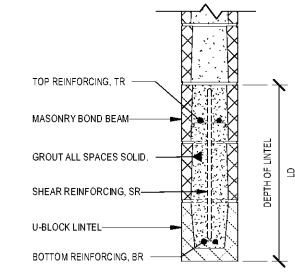
Order Plans @



5 MASONRY EDGE - VERTICAL REINFORCING
 S4.01 1 1/2" = 1'-0"



1 MASONRY LINTEL
 S4.01 1" = 1'-0"



MARK	LD	BR	TR	SR
ML01	0'-8"	(2)#5	(2)#5	--
ML02	2'-0"	(2)#5	(2)#5	--
ML03	N/A	--	--	--

DETAILS & SECTIONS -
 MASONRY

ABC STORE HOLLOWAY STREET

ABC STORE RENOVATIONS

1928 HOLLOWAY ST. DURHAM, NC

PROJECT NUMBER: 1904551



PO Box 1378
 Hillsborough NC 27278
 919 241-8745 v
 919 241-8747 f
 company@sarmiran.com
 License No. P-1738



DTW
 Architects & Planners, Ltd.
 229 North Gregson Street
 Durham, NC 27701
 919.317.4020

Revisions	1
Revision 1	
Date 1	
Drawn	JMC
Checked	JMC
Date	2019 12 19
Sheet	