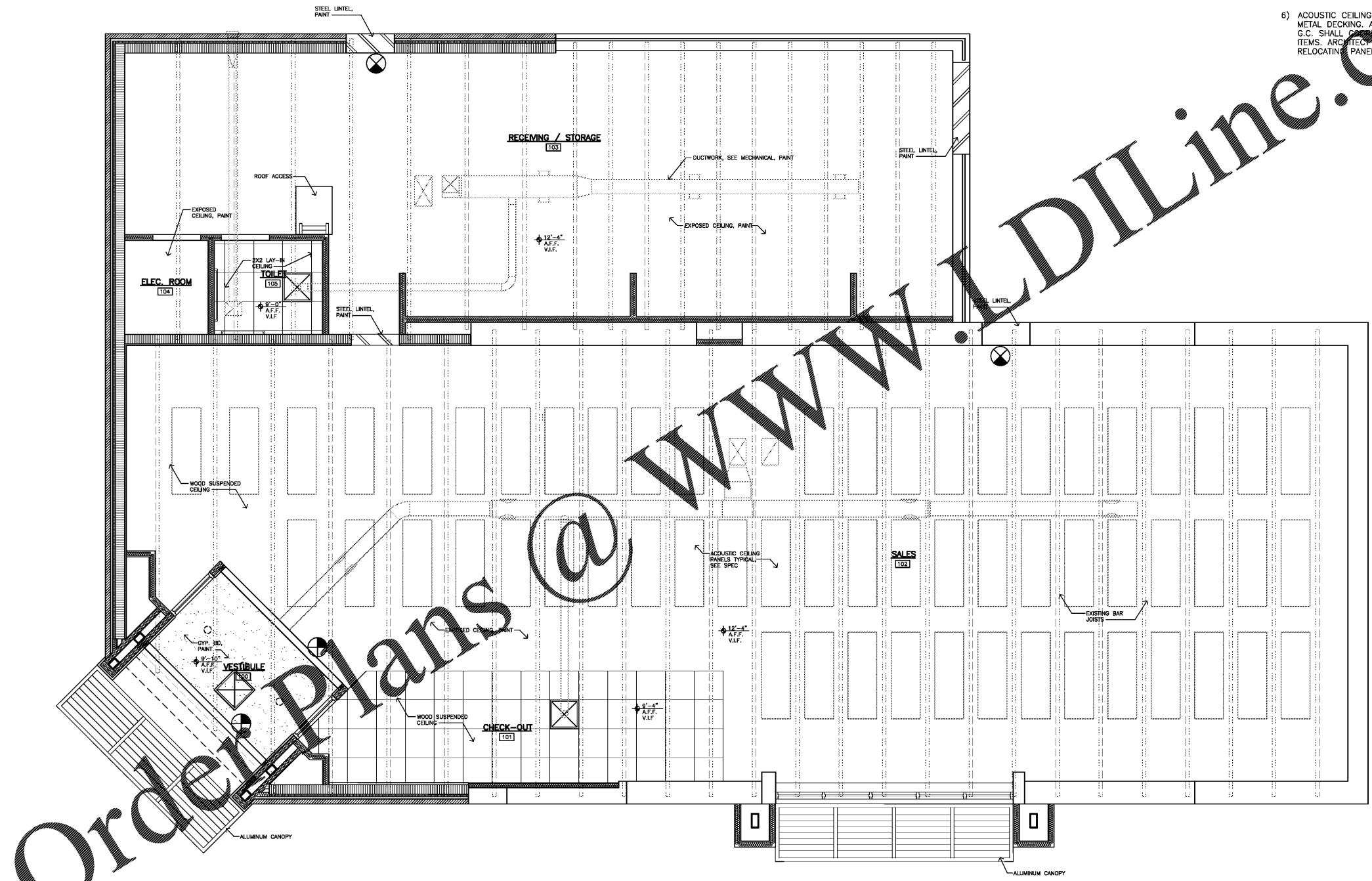


These drawings are instruments of service and as such remain the property of the architect. No copies or reproductions of these drawings are permitted without the consent of the architect. Upon completion of the work all the drawings (except the contract copies) are to be returned to the architect.  
 Copyright © 2019

GENERAL CEILING NOTES

- 1) SEE REFLECTED CEILING PLAN FOR CEILING HEIGHTS. GENERAL CONTRACTOR TO COORDINATE GRID HEIGHT AND LAYOUT WITH PLUMBING, MECHANICAL, AND ELECTRICAL CONTRACTORS.
- 2) WHERE EXPOSED CEILING TO BE PAINTED, G.C. TO PAINT ALL STRUCTURE, CONDUIT, PIPES, HANGERS AND DUCTWORK. SEE STRUCTURAL, PLUMBING, MECHANICAL, & ELECTRICAL DRAWINGS FOR ITEMS NOT SHOWN HEREIN. PAINT COLOR SHALL BE A DARK GRAY COLOR CHOSEN BY ARCHITECT.
- 3) G.C. TO PROTECT ALL TECHNOLOGY, WIRING AND EQUIPMENT NOT PART OF DEMOLITION DURING RENOVATION.
- 4) SEE P.M.E. DRAWINGS AND SPECS FOR ALL PLUMBING, MECHANICAL, & ELECTRICAL ITEMS. G.C. SHALL COORDINATE ALL TRADES.
- 5) G.C. IS RESPONSIBLE FOR PATCHING ALL THE HOLES IN WALLS ABOVE THE CEILING.
- 6) ACOUSTIC CEILING PANELS ARE DIRECTLY ATTACHED TO METAL DECKING. ATTACHMENT SHALL BE NON-PUNCTURE. G.C. SHALL VERIFY PANEL LOCATION WITH ALL P.M.E. ITEMS. ARCHITECT SHALL BE CONTACTED BEFORE RELOCATING PANELS.



Order Plans @

WWW.DILine.com

1 CEILING PLAN  
 SCALE: 1/4" = 1'-0"

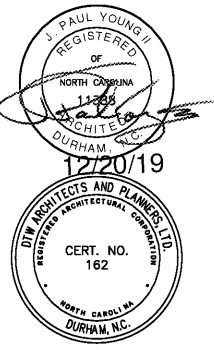
CEILING PLAN

RENOVATIONS AND ADDITIONS TO:

HOLLOWAY STREET ABC STORE

1928 HOLLOWAY ST. DURHAM, NC

PROJECT NUMBER 19002



**DTW**  
 Architects & Planners, Ltd.  
 229 North Gregson Street  
 Durham, NC 27701  
 919.317.4020

BID DOCUMENTS FOR PERMIT  
 Revisions

Drawn I.L.V.  
 Checked J.P.Y.  
 Date 12/22/19  
 Sheet

A2

of