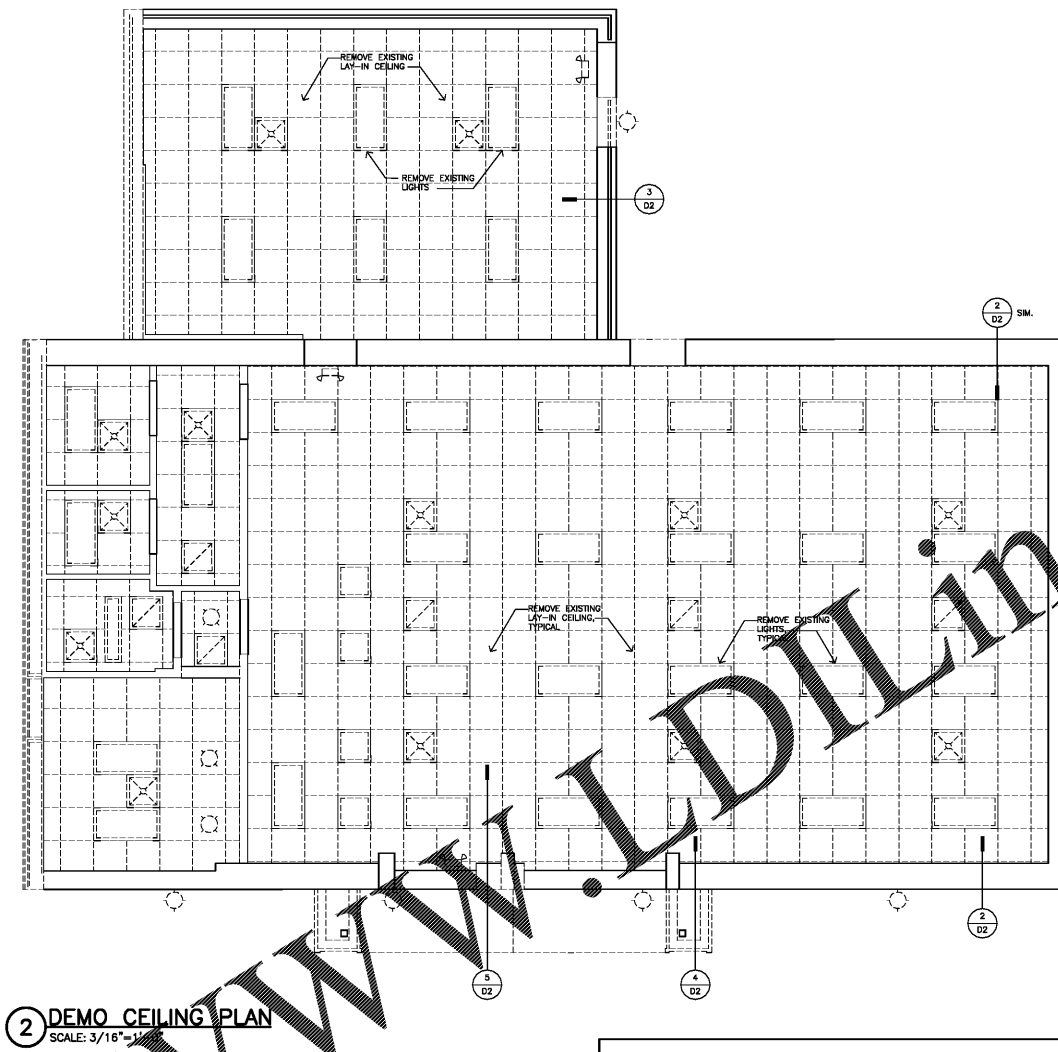
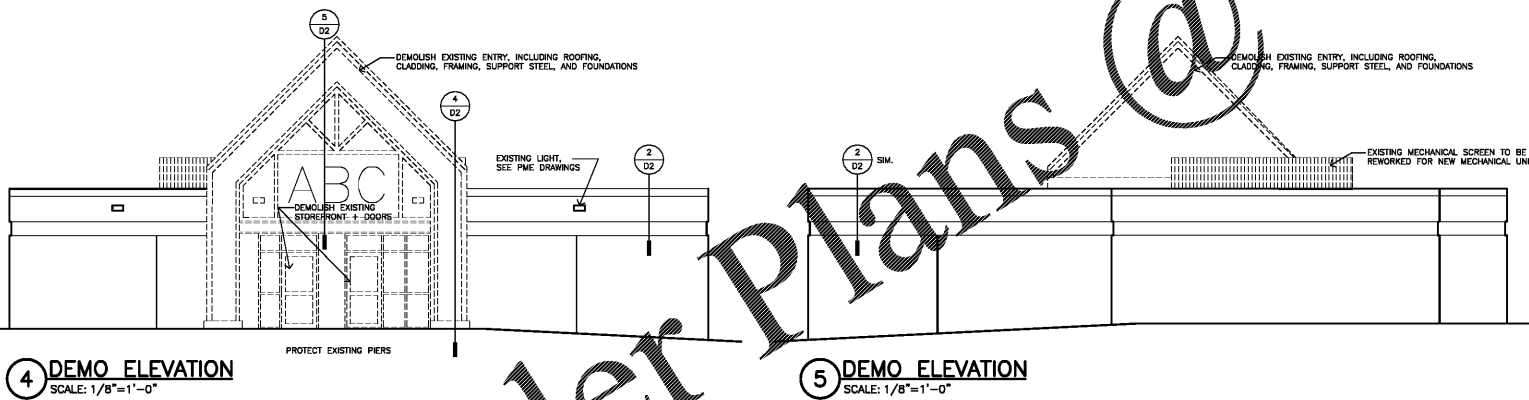


1 DEMO FLOOR PLAN
SCALE: 3/16"=1'-0"

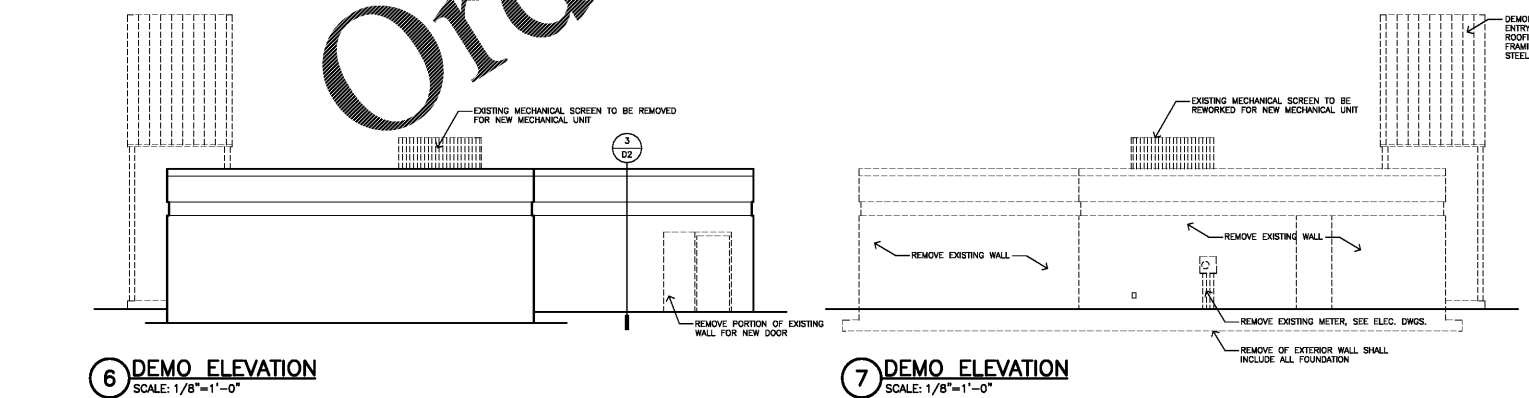


2 DEMO CEILING PLAN
SCALE: 3/16"=1'-0"



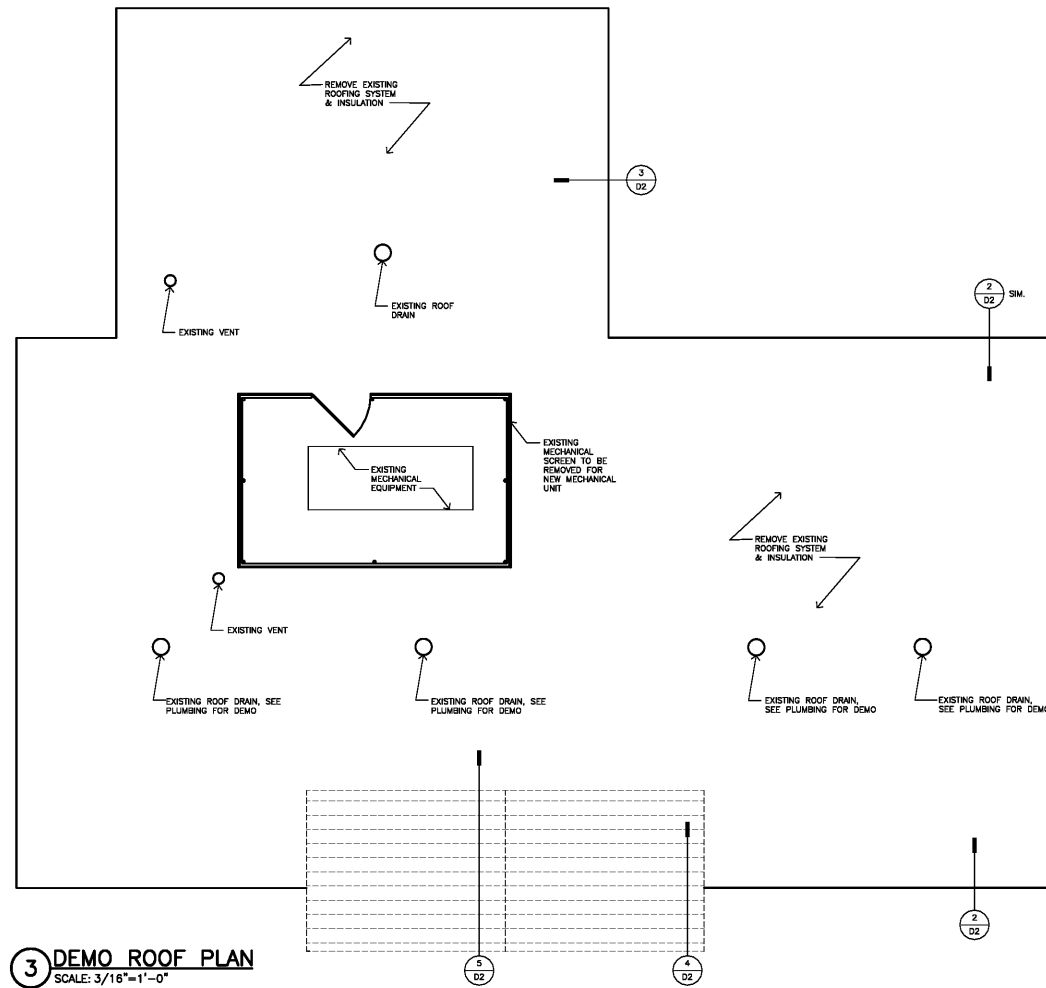
4 DEMO ELEVATION
SCALE: 1/8"=1'-0"

5 DEMO ELEVATION
SCALE: 1/8"=1'-0"



6 DEMO ELEVATION
SCALE: 1/8"=1'-0"

7 DEMO ELEVATION
SCALE: 1/8"=1'-0"



3 DEMO ROOF PLAN
SCALE: 3/16"=1'-0"

DEMOLITION LEGEND

- REMOVE EXISTING DOOR, FRAME TO REMAIN
- REMOVE EXISTING DOOR AND FRAME
- EXISTING DOOR AND FRAME TO REMAIN
- REMOVE EXISTING WALL
- EXISTING WALL TO REMAIN

GENERAL DEMOLITION NOTES

- 1) G.C. TO PROTECT ANY EXISTING TECHNOLOGY & W/PLUMBING ASSOCIATED W/ DEMOLITION.

ALL PATCHING OF EXISTING FLOOR AND WALLS REQUIRED FOR DEMOLITION TO BE DONE BY THE GENERAL CONTRACTOR

REFER TO P.M.E. DRAWINGS FOR ASSOCIATED DEMOLITION OF PLUMBING, MECHANICAL + ELECTRICAL. G.C. SHALL INCLUDE ALL CUTTING + PATCHING AS REQUIRED TO REMOVE P.M.E. ITEMS AND RETURN SURFACE TO ACCEPTABLE CONDITION PER ARCHITECT.

These drawings are instruments of service and as such remain the property of the architect. No copies or reproductions of these drawings are permitted without the consent of the architect. Upon completion of the work all the drawings (except the contract copies) are to be returned to the architect.
Copyright © 2019

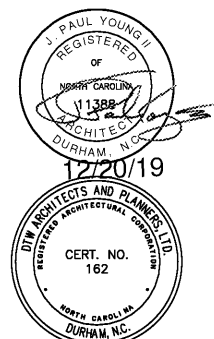
DEMOLITION FLOOR PLAN
DEMOLITION CEILING PLAN
DEMOLITION EXTERIOR ELEVATIONS

RENOVATIONS AND ADDITIONS TO:

HOLLOWAY STREET ABC STORE

1928 HOLLOWAY ST. DURHAM, NC

PROJECT NUMBER 19002



DTW
Architects & Planners, Ltd.

229 North Gregson Street
Durham, NC 27701
919.317.4020

BID DOCUMENTS FOR PERMIT

Revisions

Drawn Z.A.A. / I.L.V.
Checked J.P.Y.
Date 12/22/19
Sheet