

2/C400  
CONSTRUCTION SEQUENCE

ENFORCEMENT NOTE 1. FAILURE TO FOLLOW THIS CONSTRUCTION SEQUENCE MAY RESULT IN LOCAL ENFORCEMENT ACTIONS, INCLUDING BUT NOT LIMITED TO CIVIL PENALTIES TO \$5000 PER VIOLATION PER DAY, INJUNCTIVE RELIEF, CRIMINAL PENALTIES, AND PERMIT REVOCATION. ADDITIONALLY, OFF-SITE SEDIMENTATION MAY RESULT IN RESTORATION REQUIREMENTS.

ENFORCEMENT NOTE 2. IF THE DURHAM COUNTY S&E STAFF DETERMINES THAT EXCESSIVE SEDIMENT IS LEAVING THE SITE, A REVISED SEDIMENTATION AND EROSION CONTROL PLAN MAY BE REQUIRED, WITH ASSOCIATED REQUIREMENTS FOR ADDITIONAL S&E MEASURES.

NOTE: IF AN OFFSITE SOIL SPOIL OR BORROW SITE IS UTILIZED, THEN THE DISTURBED AREA FOR THE SPOIL/BORROW SITE MUST BE INCLUDED IN THE LAND-DISTURBANCE PLAN AND PERMIT UNLESS THE SPOIL/BORROW SITE ALREADY HAS A LAND-DISTURBANCE PERMIT

1. INSTALL TREE PROTECTION FENCING IN ACCORDANCE WITH THE APPROVED SITE PLAN.
2. INSPECT TREE FENCE AND SUBMIT A "TREE PROTECTION FENCING CERTIFICATION" FORM TO DURHAM COUNTY S&E OFFICE, FAX: (919)560-0740.
3. CALL DURHAM COUNTY S&E OFFICE FOR INSPECTION OF TREE FENCE INSTALLATION (919)560-0740.
4. OBTAIN ALL PERMITS AND APPROVALS NECESSARY TO BEGIN AND COMPLETE THE PROJECT. OBTAIN ALL PERMITS PRIOR TO BEGINNING ANY DISTURBANCE OF THE SITE SO WORK IS NOT BE INTERRUPTED.
5. SCHEDULE AND HOLD A PRE-CONSTRUCTION CONFERENCE PRIOR TO BEGINNING ANY LAND-DISTURBING ACTIVITIES. THIS CONFERENCE SHOULD BE ATTENDED BY A REPRESENTATIVE OF THE FINANCIALLY RESPONSIBLE PARTY AND/OR THE GENERAL CONTRACTOR, A SUB-CONTRACTOR, EROSION CONTROL SUB-CONTRACTOR AND THE DURHAM COUNTY S&E OFFICE.
6. OBTAIN LAND DISTURBING PERMIT AND PLACARD, AND POST THE PLACARD ON SITE.
7. OBTAIN AN APPROVED (STAMPED) S&E CONTROL PLAN AND KEEP IT ON SITE, EITHER IN THE INSPECTION BOX, CONSTRUCTION OFFICE WITH THE CONTRACTOR.
8. ONLY CLEAR THE AREA NECESSARY TO INSTALL GRAVEL CONSTRUCTION ENTRANCE, SILT FENCES, AND OTHER INITIAL EROSION CONTROL MEASURES.
9. NOTIFY THE DURHAM COUNTY S&E INSPECTOR AFTER MEASURES HAVE BEEN INSTALLED AND PROJECT HAS STARTED.
10. BEGIN CLEARING, GRUBBING, AND GRADING OF SITE IN ACCORDANCE WITH APPROVED S&E CONTROL PLAN.
11. PROVIDE ALL DISTURBED AREAS WITH GROUND COVER AS PER SEC. 12.10.4(B) OF THE DURHAM COUNTY UDG AFTER COMPLETION OF ANY PHASE OF CLEARING, GRUBBING OR GRADING. THE SEEDING, SEEDBED PREPARATION, MULCH AND/OR ROLLED EROSION CONTROL PRODUCT INSTALLATION MUST BE IN ACCORDANCE WITH THE SEEDING SCHEDULE PROVIDED IN THIS S&E PLAN.
12. INSPECT AND MAINTAIN THE SEDIMENT CONTROL DEVICES SO THEY CONTINUE TO FUNCTION PROPERLY. THE PERSON RESPONSIBLE FOR EROSION CONTROL WILL OVERSEE THE INSPECTING AND MAINTENANCE OF THESE DEVICES. MEASURES SHOULD BE INSPECTED WEEKLY AND AFTER A RAINFALL OF MORE THAN 0.5 INCHES. EROSION CONTROL DEVICES SHALL BE REPLACED WHEN DAMAGED OR DO NOT APPEAR TO WORKING PROPERLY.
13. IF IT IS DETERMINED DURING THE COURSE OF CONSTRUCTION THAT SIGNIFICANT SEDIMENT IS LEAVING THE PROJECT SITE DESPITE PROPER IMPLEMENTATION AND MAINTENANCE OF THE EROSION CONTROL PLAN, THE PERSON RESPONSIBLE FOR THE LAND DISTURBING ACTIVITY IS OBLIGATED TO TAKE ADDITIONAL PROTECTIVE ACTION.
14. KEEP MUD AND DEBRIS OFF THE PUBLIC STREET AT ALL TIMES. IF MUD OR DEBRIS IS TRACKED FROM THE SITE, USE A SHOVEL AND BROOM TO REMOVE IT IMMEDIATELY. IF MUD AND DEBRIS ARE NOT KEPT OFF THE STREET, ENFORCEMENT ACTION (REVOKING THE GRADING PERMIT AND/OR A STOP WORK ORDER) MAY BE TAKEN.
15. SEEDING AND RESTABILIZATION OF DISTURBED AREAS MUST BE ACCOMPLISHED PER THE PLANS AND SPECIFICATIONS WITHIN THE TIMEFRAMES GIVEN IN THE STABILIZATION TIME TABLE PROVIDED IN THE SEEDING SCHEDULE (10/C401). CONTRACTOR IS RESPONSIBLE FOR TEMPORARY SEEDING THAT IS REQUIRED DURING THE PROJECT AT NO ADDITIONAL COST TO THE OWNER.
16. AT THE CONCLUSION OF BUILDING OR IF LAND-DISTURBING ACTIVITY IS STOPPED TEMPORARY OR PERMANENT VEGETATION COVER SHALL BE INSTALLED IN ACCORDANCE WITH SEC 12.10.4(B) OF THE DURHAM COUNTY UDG.
17. WHEN CONSTRUCTION IS COMPLETE AND STABILIZED, CONTACT EROSION CONTROL PERSONNEL FOR AN INSPECTION.
18. WHEN CONSTRUCTION IS COMPLETE AND ALL DISTURBED AREAS HAVE BEEN PERMANENTLY RE-STABILIZED, REMOVE ALL TEMPORARY SEDIMENT CONTROL DEVICES. REMOVE AND PROPERLY DISPOSE OF ACCUMULATED SEDIMENT AND DEBRIS FROM THE DEVICES AND RE-STABILIZE AREAS DISTURBED BY THEIR REMOVAL.

3 / C400  
LIMITS OF DISTURBANCE NOTES

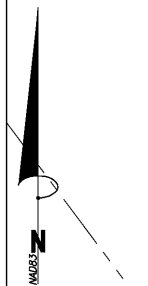
AREA OF DISTURBANCE:  
40,072 SF / 0.92 AC

4 / C400  
EROSION CONTROL LEGEND

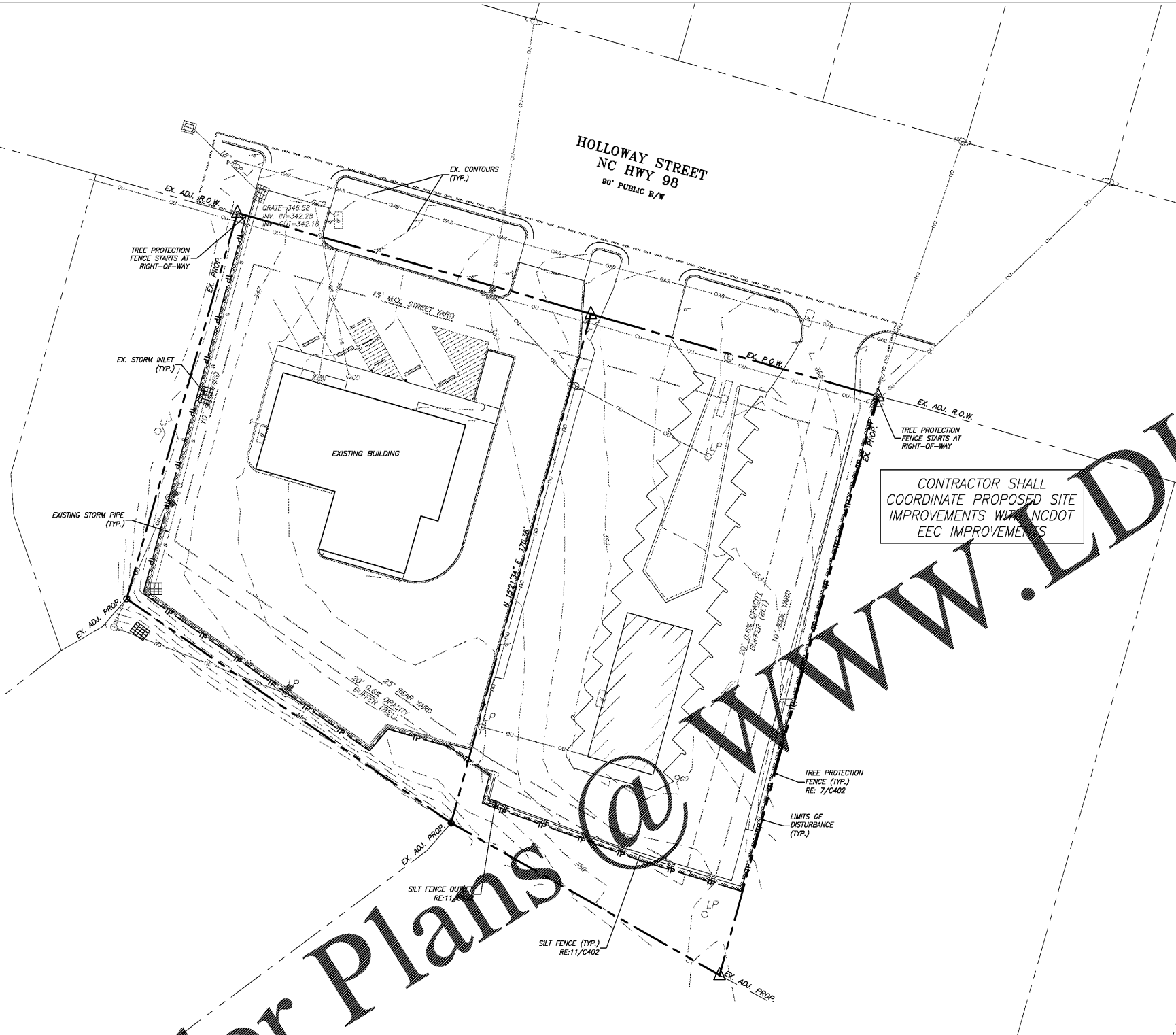
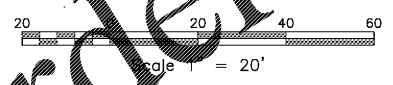
- SILT FENCE
- TREE PROTECTION FENCE
- LIMITS OF DISTURBANCE
- INLET PROTECTION
- SILT FENCE OUTLET
- CONSTRUCTION ENTRANCE
- STRAW WATTLE

CONTRACTOR SHALL  
COORDINATE PROPOSED SITE  
IMPROVEMENTS WITH NCDOT  
EEC IMPROVEMENTS

Order Plans @ [www.lidline.com](http://www.lidline.com)



1/C400  
EROSION CONTROL PLAN - PHASE 1  
SCALE: 1" = 20'



**Coulter  
Jewell  
Thames, Inc.**

111 West Main Street  
Durham, N.C. 27701  
p 919.682.0368  
f 919.688.5646  
www.cjtpa.com

NC BOARD OF EXAMINERS FOR  
ENGINEERS AND SURVEYORS  
LIC# C-1209



Project  
**HOLLOWAY  
STREET  
ABC STORE**  
  
1928 AND 1930  
HOLLOWAY STREET  
DURHAM, NC 27707  
  
DURHAM COUNTY NC

P.I.N. 0831-12-95-2949  
0831-12-95-3944

Job Number 1865  
Drawn: AJP, ED  
Checked: AJP, PSR  
Date 10/11/2019  
Revisions:  
1. 10/29/2019 COMMENTS  
2. 11/21/2019 COMMENTS  
3. 12/20/2019 BID PLANS

CONSTRUCTION DRAWINGS  
NOT ISSUED  
FOR CONSTRUCTION

Sheet Title  
**EROSION  
CONTROL  
PLAN -  
PHASE 1**

Sheet Number  
**C400**