



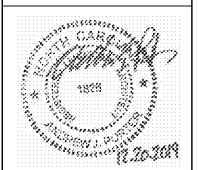
**Coulter
Jewell
Thames, Inc.**

111 West Main Street
Durham, N.C. 27701
p 919.682.0368
f 919.688.5646
www.cjtpa.com

NC BOARD OF EXAMINERS FOR
ENGINEERS AND SURVEYORS
LIC# C-1209
NC BOARD OF LANDSCAPE
ARCHITECTS LIC# 104



Durham County
Planning and Zoning Board



Project
**HOLLOWAY STREET
ABC STORE**

1928 AND 1930
HOLLOWAY STREET
DURHAM, NC 27707

DURHAM COUNTY NC

P.I.N. 0831-12-95-2949
0831-12-95-3944

Job Number 1865

Drawn A.P. ED
Checked A.P. PBR
Date 10/11/2019
Revisions 1. 10/29/2019 COMMENTS
2. 11/21/2019 COMMENTS
3. 12/20/2019 BID PLANS

**CONSTRUCTION DRAWINGS
NOT ISSUED
FOR CONSTRUCTION**

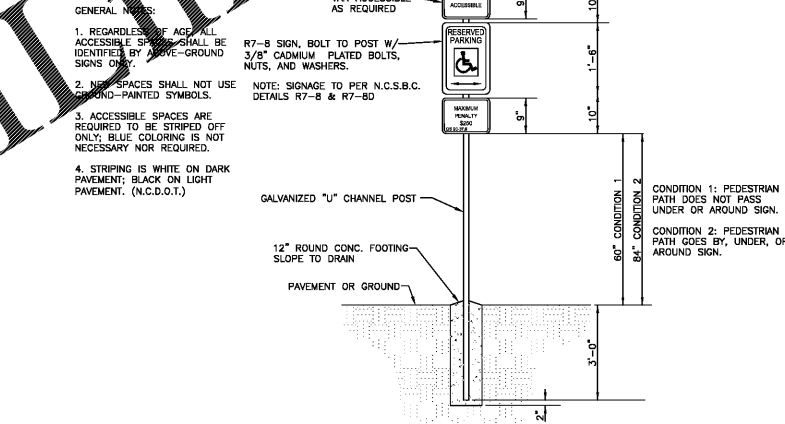
Sheet Title
**SITE
LAYOUT
PLAN**

Sheet Number
C200

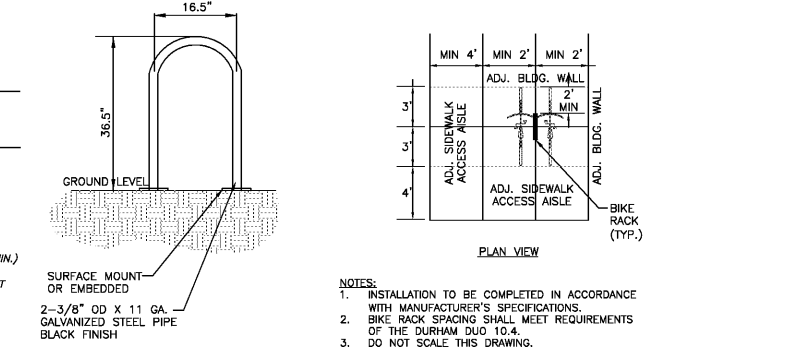
**2/C200
SITE LAYOUT PLAN NOTES**

- ALL ANGLES ARE 90 DEGREES UNLESS OTHERWISE NOTED.
- DIMENSIONS TO BUILDING WALL ARE TO FACE OF WALL AT FINISH GRADE. DIMENSIONS TO CURB ARE TO FACE OF CURB.
- LAYOUT IMPROVEMENTS FOR THE CIVIL ENGINEER'S OR LANDSCAPE ARCHITECT'S REVIEW PRIOR TO BEGINNING CONSTRUCTION.
- REFERENCE ARCHITECTURAL DRAWINGS FOR BUILDING LAYOUT INFORMATION.
- ADA PARKING SPACES SHALL BE SIGNED WITH TYPE R7-B OR R7-BA RESERVED PARKING SIGN PER GS 20-37.6 OF THE NORTH CAROLINA HANDICAP CODE. ADA RAMPS SHALL HAVE RAMP SURFACES COVERED WITH DETECTABLE WARNING PATTERN PER ADA STANDARDS.
- REFERENCE DEMOLITION PLAN SHEET C100 FOR EXTENT OF DEMOLITION AND REMOVAL OF CURB AND GUTTER, DRIVEWAYS, PAVEMENT, BOLLARDS, WALKWAYS, UTILITIES, AND VEGETATION.
- CAPACITY AND COLLECTION FREQUENCY SHALL PREVENT THE ILLEGAL DISPOSAL OR PLACEMENT OF GARBAGE AND RECYCLABLES. OWNERS ARE RESPONSIBLE FOR MAINTAINING ACCESS AREAS AND WASTE HANDLING FACILITIES AND FOR PREVENTING ILLEGAL DISPOSAL OF GARBAGE AND MANDATORY RECYCLABLES.
- ALL GARBAGE AND RECYCLABLES GENERATED AT THE PROJECT WILL BE SEPARATED AND TRANSPORTED BY THE PROJECT OWNER/MANAGER TO THE APPROPRIATE WASTE HANDLING FACILITY. TENANTS WILL NOT BE RESPONSIBLE FOR THIS.
- CONTRACTOR TO COORDINATE WATER PROOFING OF BUILDING FOUNDATION WITH ARCHITECT AND OWNER.
- FINISHED SIDE OF ALL FENCES SHALL FACE OFFSITE. (UDO 9.9.2)
- ALL CURB RADI SHALL BE A MINIMUM OF 3'. (UDO 9.8.3)
- TREE PLANTING AND SITE LIGHTING SHALL BE SEPARATED BY A MINIMUM OF 10 FEET TO REDUCE CONFLICTS BETWEEN MATURE TREES AND LIGHT STANDARDS. (UDO 9.8.1.C.3.)
- FIRE LANES ARE TO BE MARKED IN ACCORDANCE WITH CITY GUIDELINES (PAVEMENT MARKINGS AND SIGNAGE). FIRE LANE SIGNAGE READING "NO PARKING-FIRE LANE" SHALL BE RED LETTERS ON A REFLECTIVE BACKGROUND, AND OF STANDARD NO PARKING SIGN CHARACTERISTICS. NEEDS TO BE APPROVED BY CONTRACTOR TO CONTACT THE CITY OF DURHAM FIRE MARSHAL TO COORDINATE FIRE LANE MARKING AND SIGNAGE.

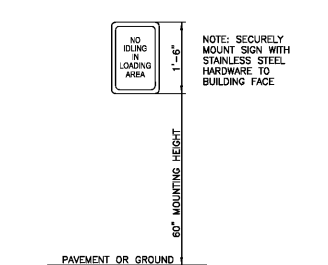
**3/C200
ADA SIGNAGE
NTS**



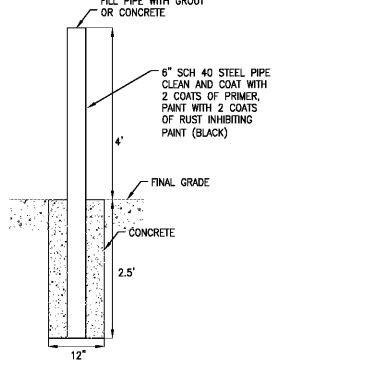
**4/C200
BIKE RACK DETAIL
NTS**



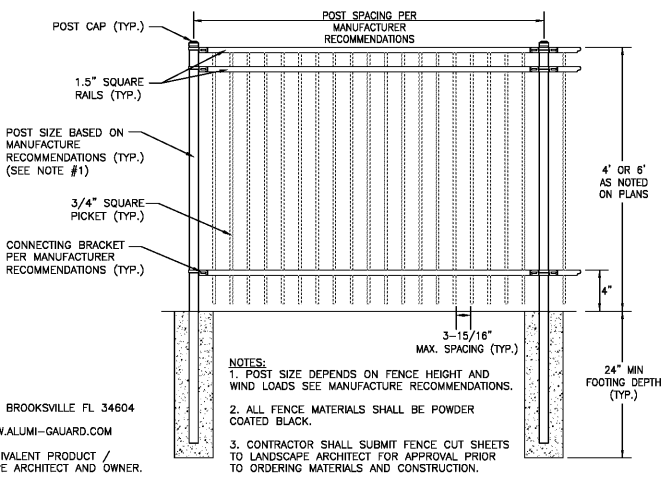
**7/C200
NO IDLING SIGN
NTS**



**5/C200
6\" PIPE BOLLARD
NTS**

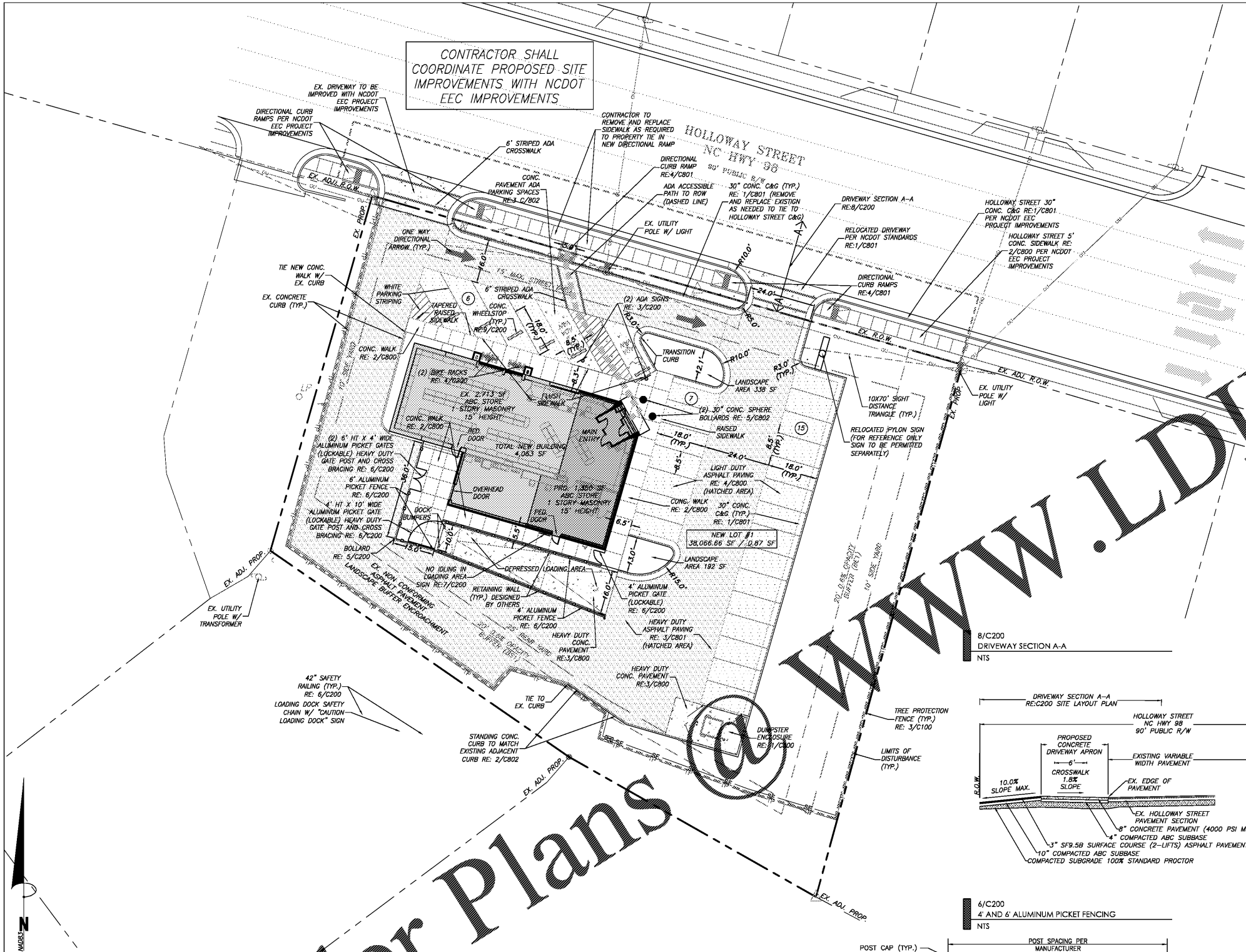


**6/C200
4\" AND 6\" ALUMINUM PICKET FENCING
NTS**



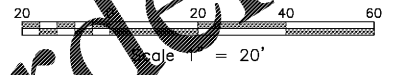
MANUFACTURER:
ALUMI-GUARD INC. 2401 CORPORATE BLVD, BROOKVILLE FL 34604
PHONE: 877-258-6448, 354-754-8555
EMAIL: INFO@ALUMI-GUARD.COM, WEB: WWW.ALUMI-GUARD.COM
CONTRACTOR MAY SUBMIT REQUEST FOR EQUIVALENT PRODUCT / MANUFACTURER FOR APPROVAL BY LANDSCAPE ARCHITECT AND OWNER.

CONTRACTOR SHALL COORDINATE PROPOSED SITE IMPROVEMENTS WITH NCDOT EEC IMPROVEMENTS



Order Plans

**1/C200
SITE LAYOUT PLAN
SCALE: 1\" = 20\"**



**9/C200
CONCRETE WHEEL STOP
NTS**

