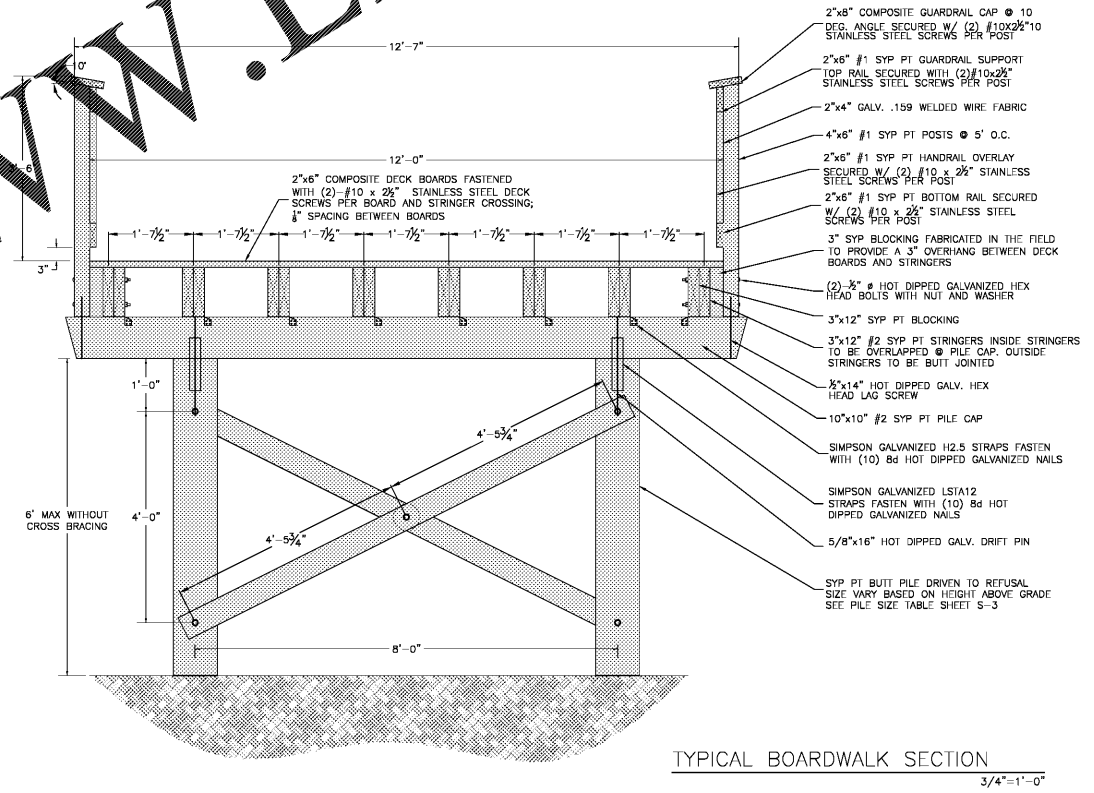
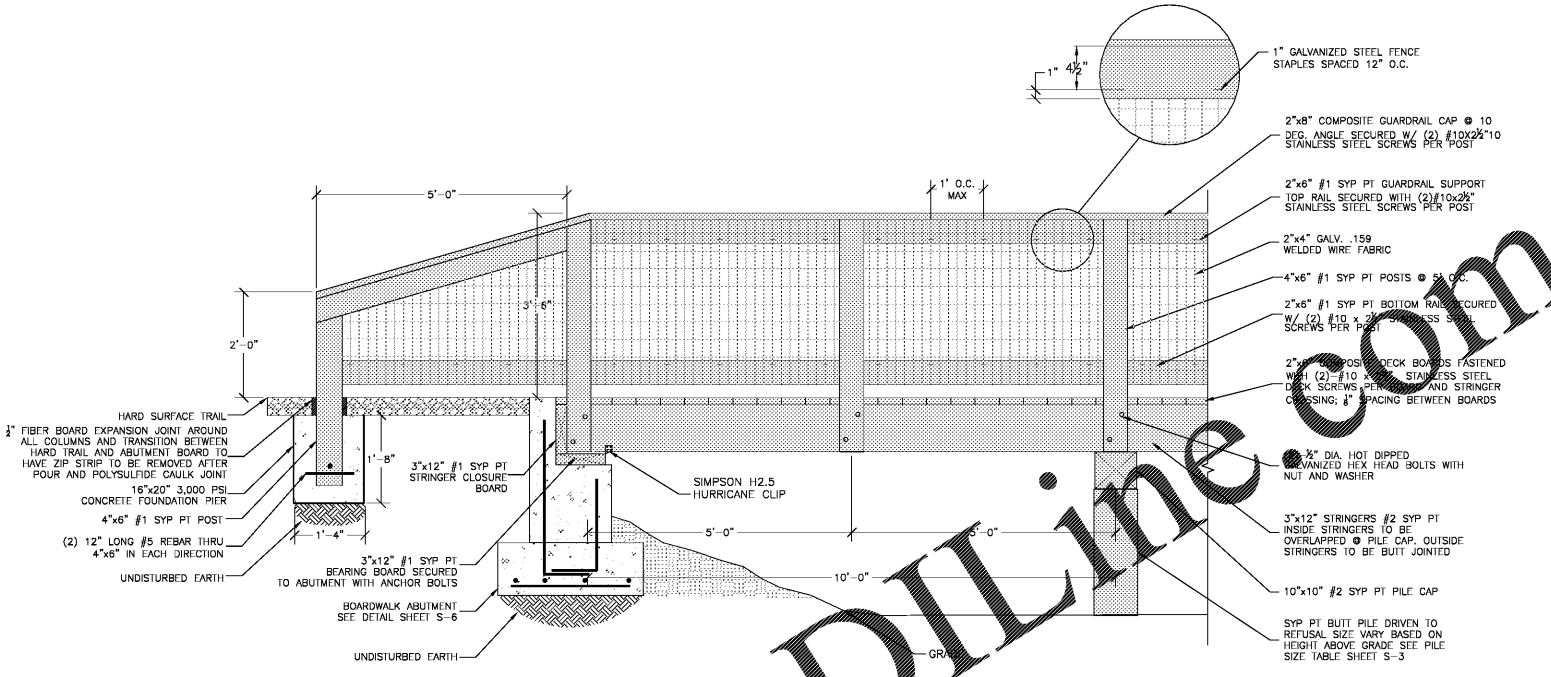
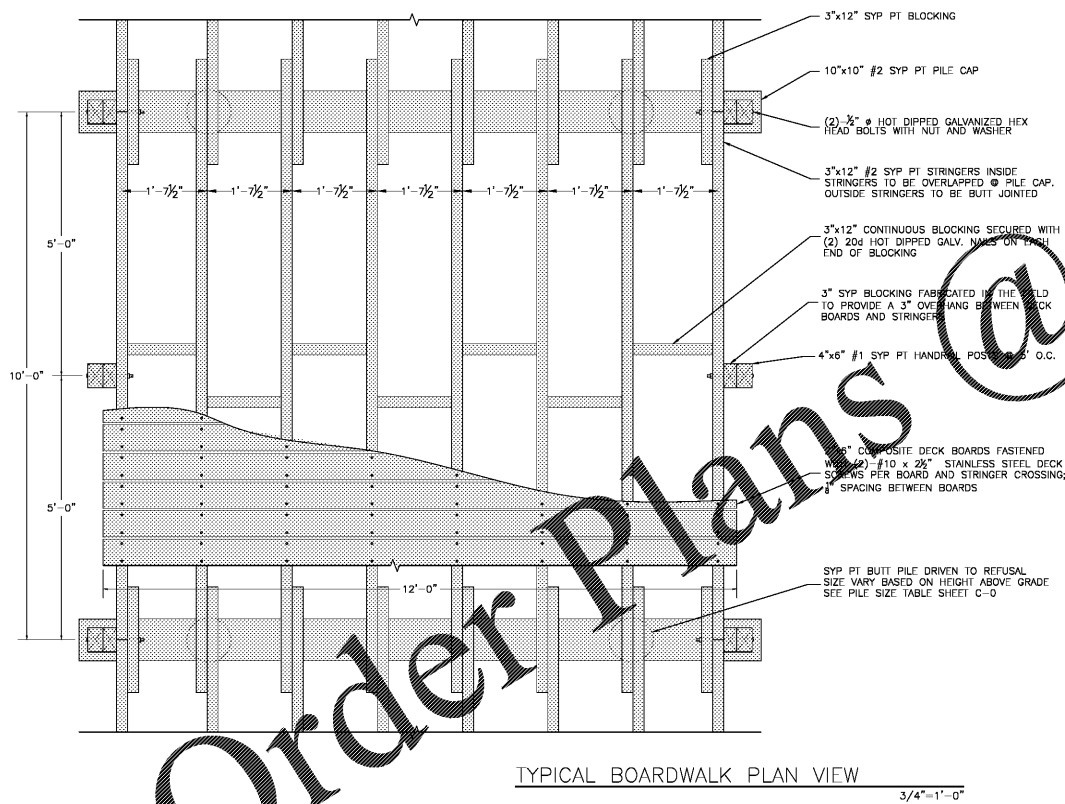
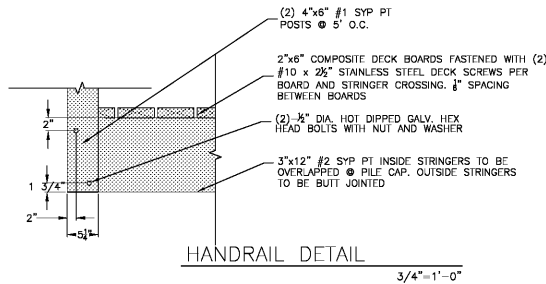


Lumber Specifications				
Dimension	Location	Species	Grade	Treatment
2" x 8"	Guardrail Cap	Composite		
2" x 6"	Decking	Composite		
2" x 6"	Top Rail	SYP	# 1	0.40 ACQ
2" x 6"	Wire Cover	SYP	# 1	0.40 ACQ
2" x 6"	Bottom Rail	SYP	# 1	0.40 ACQ
4" x 6"	Guardrail Post	SYP	# 1	0.40 ACQ
4" x 4"	Guardrail Post Blocking	SYP	# 1	0.40 ACQ
3" x 12"	Stringer	SYP	# 2 & BTR	0.80 ACQ
3" x 12"	Stringer Blocking	SYP	# 2 & BTR	0.80 ACQ
10" x 10"	Pile Cap	SYP	# 2 & BTR	0.80 ACQ
2" x 8"	Cross Bracing	SYP	# 2 & BTR	0.80 ACQ
6"	Pile	SYP		CCA
6"	Pile Blocking	SYP		CCA

SYP (Southern Yellow Pine)
 * Modified in the field to 3"
 Guardrail cap and deck board may also be
 2"x6" #1 SYP PT 0.40 ACQ treatment



GWINNETT COUNTY APPROVAL

GWINNETT COUNTY
 Department of Planning and Development

These project documents have been reviewed by applicable County Departments and have been found to be in substantial compliance with the applicable codes and regulations.

Oct 08, 2019
 AUTHORIZED

Matthew Parker
 Licensed Professional Engineer
 State of Georgia
 License No. 11111
 Date: 2019.10.03 18:22:50 -0500

PARKER
 CONSULTING SERVICES, INC.
 CIVIL ENGINEERS
 3849 KILLBUCK CENTER CT
 TALLAHASSEE, FL 32305 PHONE: (850) 877-8400
 MATTHEW.PARKER@PARKERFLA.COM

Project Title
 LLOYD N. HARRIS TRAIL @ HARBINS PARK
 2995 LUKE EDWARDS ROAD
 BY: GWINNETT COUNTY DEPT. OF COMMUNITY SERVICES
 LAWRENCEVILLE, GEORGIA

REVISIONS	BY

DRAWN BY: LMF
 CHECKED BY: MP
 DATE: 10/03/19
 SCALE: 3/4"=1'-0
 JOB No. 18-LD-068
 SHEET NUMBER