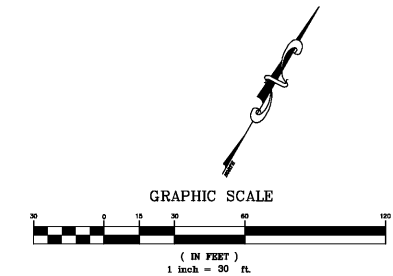
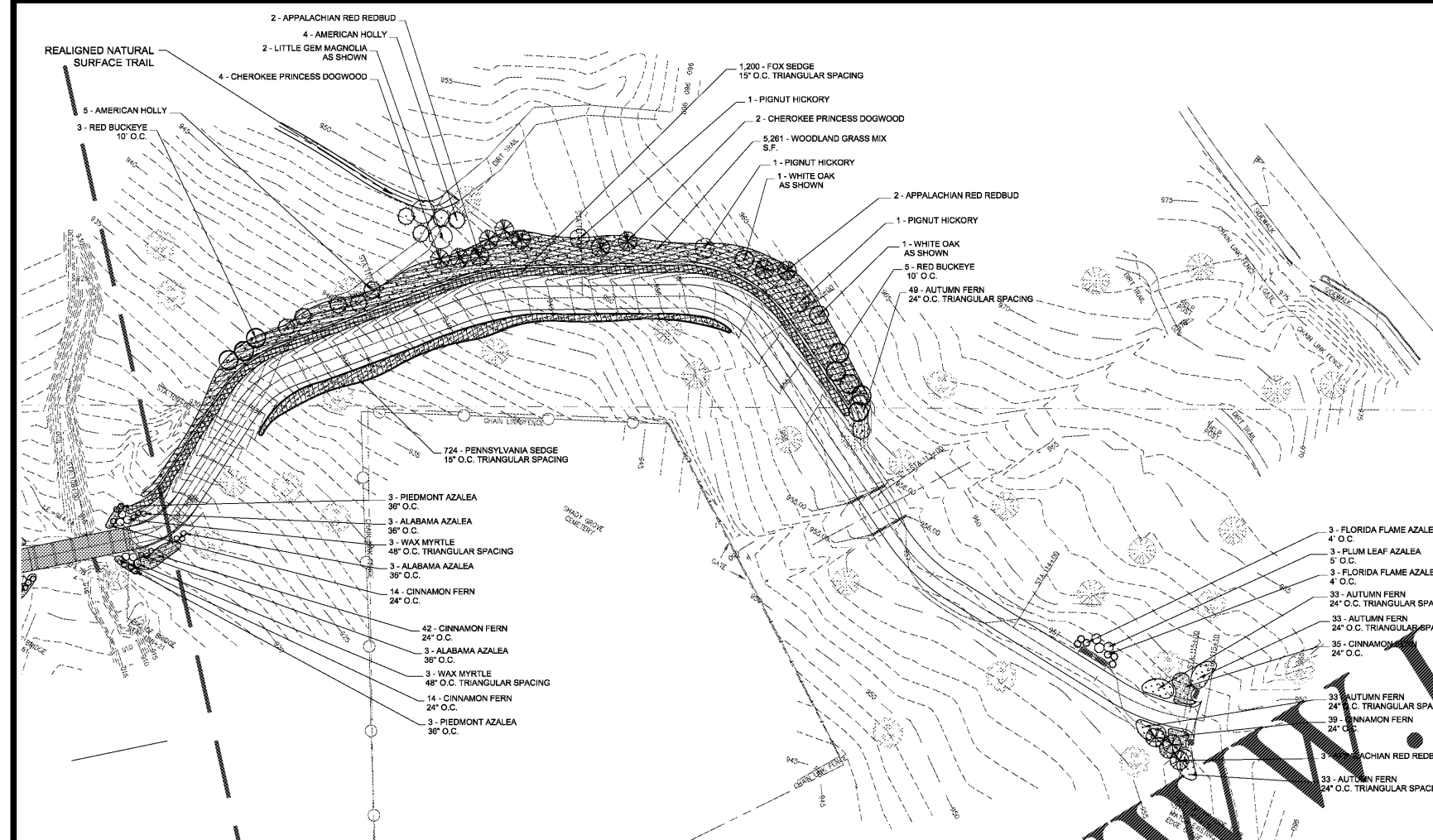


NOTE: AREAS WITH LESSER CUT / FILL SLOPES ARE TO HAVE NATIVE SOILS AND TREE LITTER SPREAD OVER THEM AND TOPPED WITH CLEAN WHEAT STRAW TO HELP STABILIZE SLOPE AND ALLOW EXISTING GROUND FLORA TO GROW.

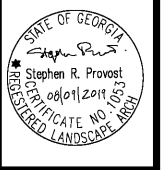
NOTE: ALL TREES WITHIN THE LIMITS OF RAIL GRADING ARE TO BE REMOVED, UNLESS OTHERWISE NOTED TO BE PROTECTED. CONTRACTOR TO MARK / FLAG ALL TREES OUTSIDE THE GRADING LIMITS BUT WITHIN THE OVERALL LIMITS OF CONSTRUCTION FOR THE COUNTY'S REPRESENTATIVE(S) TO DETERMINE IF THESE TREES ARE TO BE REMOVED OR PROTECTED.



Order Plans @ www.LDILine.com

WOLVERTON
Engineering Solutions, Inc. Local, Inc. Trust
9105 Sugarloaf Parkway • Suite 170 • Atlanta, Georgia 30077
www.wolvertonsolutions.com

BARGE
DESIGN SOLUTIONS
2907 Peach Ferry Road, S.E. • Suite 150 • Atlanta, Georgia 30339
PHONE (770) 658-1011 • www.bargedesign.com



Project Title
LLOYD N. HARRIS TRAIL @ HARBINS PARK
2995 LUKE EDWARDS ROAD
BY: GWINNETT COUNTY DEPT. OF COMMUNITY SERVICES
LAWRENCEVILLE, GEORGIA
5TH DISTRICT, LAND LOT 251, PARCEL ID# R5262 003

REVISIONS	BY

GWINNETT COUNTY
Department of Planning and Development
These project documents have been reviewed by applicable County Departments and have been found to be in substantial compliance with the applicable codes and regulations.
Oct 08, 2019
AUTHORIZED

LANDSCAPE PLAN

FOR PERMIT ONLY

DRAWN BY	RKC
CHECKED BY	SP
DATE	08 / 09 / 2019
SCALE	1"=30'-0"
JOB No.	18-LD-088
SHEET NUMBER	L3.5