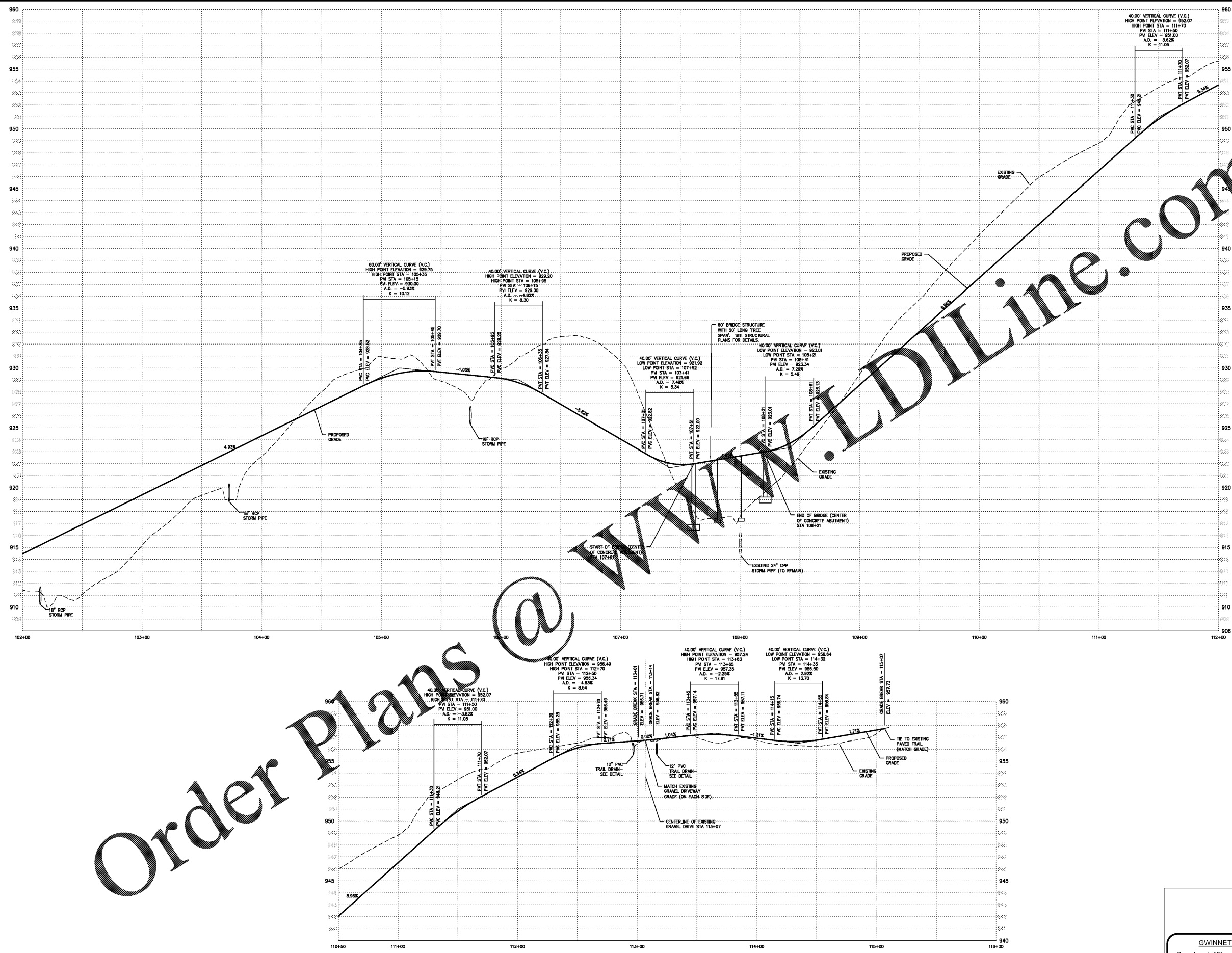


USDT drawn - Oct 01, 2018 - 4:29pm
 Z:\proj\2018\18-LD-088\18-LD-088.mxd\production\drawings\18-LD-088 MAIN.dwg - L:\USDT - T-8



Order Plans @

WWW.LDLINE.COM



TRAIL CENTERLINE
 scale: 1"=30' horizontal
 1"=3' vertical

TRAIL CENTERLINE
PROFILES

GWINNETT COUNTY
 Department of Planning and Development

These project documents have been reviewed by applicable County Departments and have been found to be in substantial compliance with the applicable codes and regulations.

Oct 08, 2019
 AUTHORIZED

GWINNETT COUNTY CASE # CDP2018-00288

FOR PERMIT ONLY

REVISIONS	BY

DRAWN BY: DMN
 CHECKED BY: THH
 DATE: 09/25/2019
 SCALE: 1" = 30'
 JOB No.: 18-LD-088
 SHEET NUMBER: T-8

WOLVERTON
 Engineering Solutions You Can Trust
 6702 Sugarloaf Parkway - Suite 100
 Atlanta, Georgia 30327
 www.wolverton.com

GEORGIA
 REGISTERED
 PROFESSIONAL
 ENGINEER
 HUNTER

GSWCC# 22364
 ISS: 05/16/2018
 EXP: 05/16/2021

Project Title
 LLOYD N. HARRIS TRAIL @ HARBINS PARK
 2995 LUKE EDWARDS ROAD
 BY: GWINNETT COUNTY DEPT. OF COMMUNITY SERVICES
 LAWRENCEVILLE, GEORGIA
 5TH DISTRICT, LAND LOT 251, PARCEL ID# R5262 003