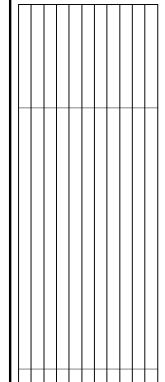




675 Tower Road  
Marietta, GA 30060-6958  
770.423.0016  
www.cdhparkers.com  
COPYRIGHT © 2018 BY CDH PARTNERS INC.  
ALL RIGHTS RESERVED

FULTON COUNTY SCHOOL SYSTEM  
**EVOLINE C. WEST ELEMENTARY SCHOOL  
- RENOVATIONS**  
7040 RIVERTOWN RD  
FAIRBURN, GA 30213

PROJECT NO:	18048.00
50% CD	08/07/2018
55% CD - re-submittal	11/20/2018
90% CD	10/04/2019
PERMIT SET	11/15/2019
BID SET	12/20/2019

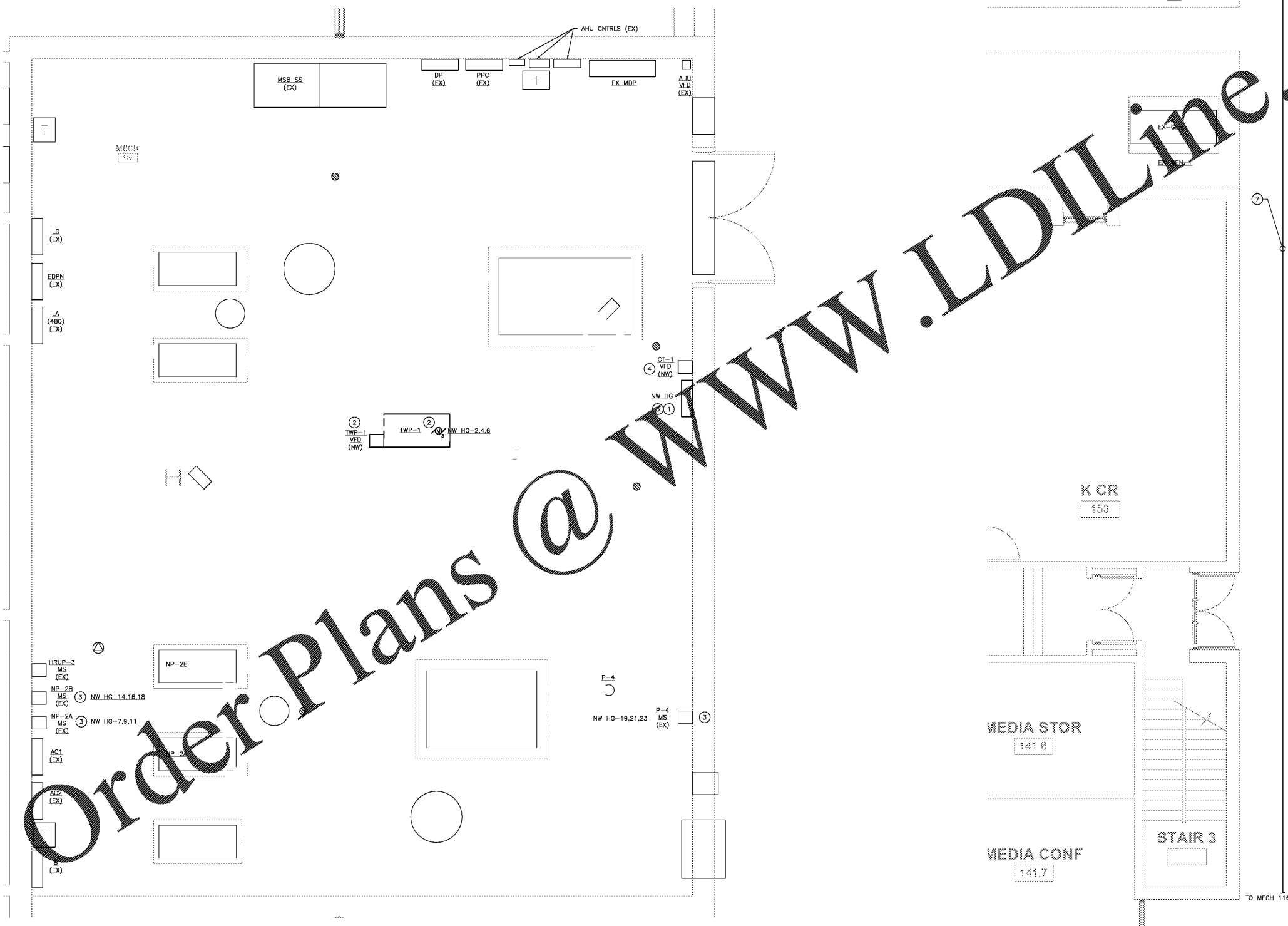
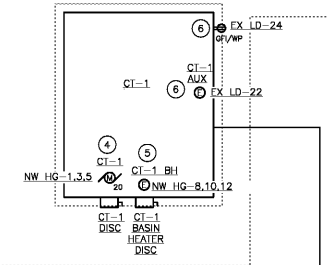


SHEET TITLE  
**ELECTRICAL POWER  
PART PLANS**

SHEET NUMBER  
**E201**

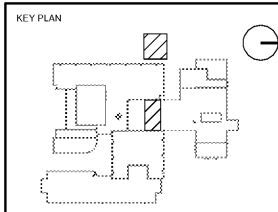
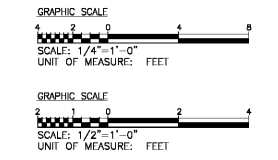
- GENERAL NOTES:**
- CONTRACTOR SHALL FIELD VERIFY EXACT CIRCUITS SERVING EXISTING MECHANICAL EQUIPMENT.
  - COORDINATE DEMOLITION WITH FIELD CONDITIONS AND MECHANICAL DRAWINGS.
  - ALL EXISTING CIRCUITS PROVIDING POWER TO MECHANICAL EQUIPMENT ARE EXISTING TO REMAIN UNCHANGED.
  - ALL CONDUIT FROM MECH 116 TO COOLING TOWER AREA SHALL BE DIRECT BURIED SCHEDULE 40 PVC.

- DRAWING NOTES:**
- RECONNECT PANELBOARD HG TO EXISTING 100A CIRCUIT MDP-5; EXTEND CONDUCTORS AND CONDUITS REQUIRED FOR NEW CONNECTION.
  - PROVIDE NEW CIRCUIT FOR NEW PUMP AND CONDUIT TO VFD PROVIDED BY DIV 23.
  - RECONNECT MECHANICAL EQUIPMENT FROM EXISTING ELECTRICAL PANEL TO NEW ELECTRICAL PANEL; EXTEND CONDUCTORS AND CONDUIT AS REQUIRED FOR NEW CONNECTION.
  - PROVIDE NEW CIRCUIT AND 60A 480V-3-POLE NEMA-3R DISCONNECT FOR NEW CT-1 FAN MOTOR. PROVIDE AUX CONTACT IN VFD CONNECTED TO DISCONNECT SO THAT WHEN CT-1 DISCONNECT IS TURNED TO THE OFF POSITION, THE VFD WILL NOT OPERATE. VFD PROVIDED BY DIV 23.
  - PROVIDE NEW CIRCUIT AND 30A 480V-3-POLE NEMA-3R DISCONNECT FOR NEW CT-1 BASIN HEATER.
  - PROVIDE 120V AUX CIRCUITS AS INDICATED FOR VIBRATION CUT-OFF SWITCH, WATER LEVEL CONTROLLER, AND WP/GIT SERVICE RECEPTACLE.
  - FOLLOW MECHANICAL PIPING. PROVIDE SCHEDULED 40 PVC DIRECT BURIED AT 18" TO TOP OF CONDUIT MINIMUM. SEE E-001 FOR CONDUIT DETAIL.



**1 ELECTRICAL POWER PLAN – MAIN MECHANICAL ROOM**  
SCALE: 1/2" = 1' 0"

**2 ELECTRICAL POWER PLAN – MECHANICAL YARD**  
SCALE: 1/4" = 1' 0"



Order Plans @ [www.LDILine.com](http://www.LDILine.com)