



675 Tower Road
Marietta, GA 30060-6956
770.423.0016
www.cdhpartners.com

COPYRIGHT © 2019 BY CDH PARTNERS INC.
ALL RIGHTS RESERVED.

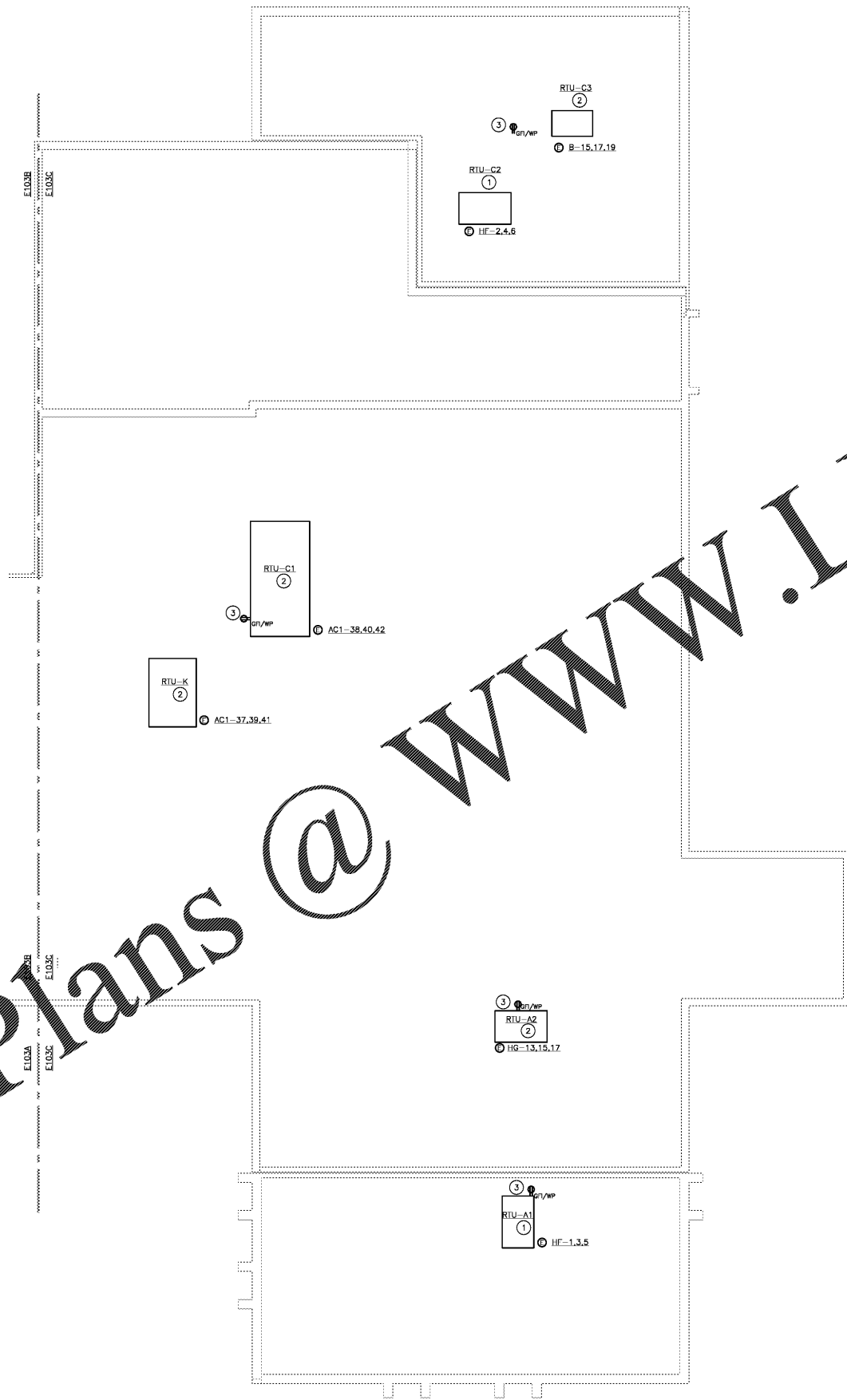
FULTON COUNTY SCHOOL SYSTEM
**EVOLINE C. WEST ELEMENTARY SCHOOL
- RENOVATIONS**
7040 RIVERTOWN LANE
FAIRBURN, GA 30213

GENERAL NOTES:

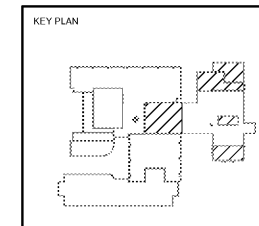
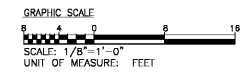
- CONTRACTOR SHALL FIELD VERIFY EXACT CIRCUITS SERVING EXISTING MECHANICAL EQUIPMENT.
- COORDINATE SAFETY SWITCH, MANUAL MOTOR STARTER AND OTHER WIRING DEVICES WITH FIELD CONDITIONS. INSTALL DISCONNECTING MEANS AS CLOSE TO EQUIPMENT AS POSSIBLE. DISCONNECTS SERVING ABOVE CEILING EQUIPMENT SHALL BE INSTALLED ABOVE CEILING.

DRAWING NOTES:

- CONNECT NEW ROOFTOP AIR HANDLING UNIT TO EXISTING CIRCUIT. LOCAL DISCONNECT SHALL BE PROVIDED BY DIVISION 23. EXTEND CIRCUIT AND CONDUIT AS REQUIRED.
- PROVIDE CIRCUIT FOR NEW ROOFTOP AIR HANDLING UNIT. LOCAL DISCONNECT SHALL BE PROVIDED BY DIVISION 23. EXTEND CIRCUIT AND CONDUIT AS REQUIRED.
- PROVIDE SERVICE RECEPTACLE MOUNTED ON UNIT OR PEDASTAL AND CONNECT TO EXISTING UNSWITCHED, DEDICATED 120V CIRCUIT.



Order Plans @ www.LDILine.com



50% CD	08/07/2018
55% CD - resubmit	11/20/2018
90% CD	10/04/2019
PERMIT SET	11/15/2019
BID SET	12/20/2019



SHEET TITLE
**ELECTRICAL POWER
PLAN - ROOF**

SHEET NUMBER
E103C

ELECTRICAL ROOF PLAN - UPPER LEVEL
SCALE: 1/8" = 1' 0"