



975 Tower Road
Marietta, GA 30060-6958
770.423.0016
www.cdhpark.com

COPYRIGHT © 2019 BY CDH PARTNERS INC.
ALL RIGHTS RESERVED

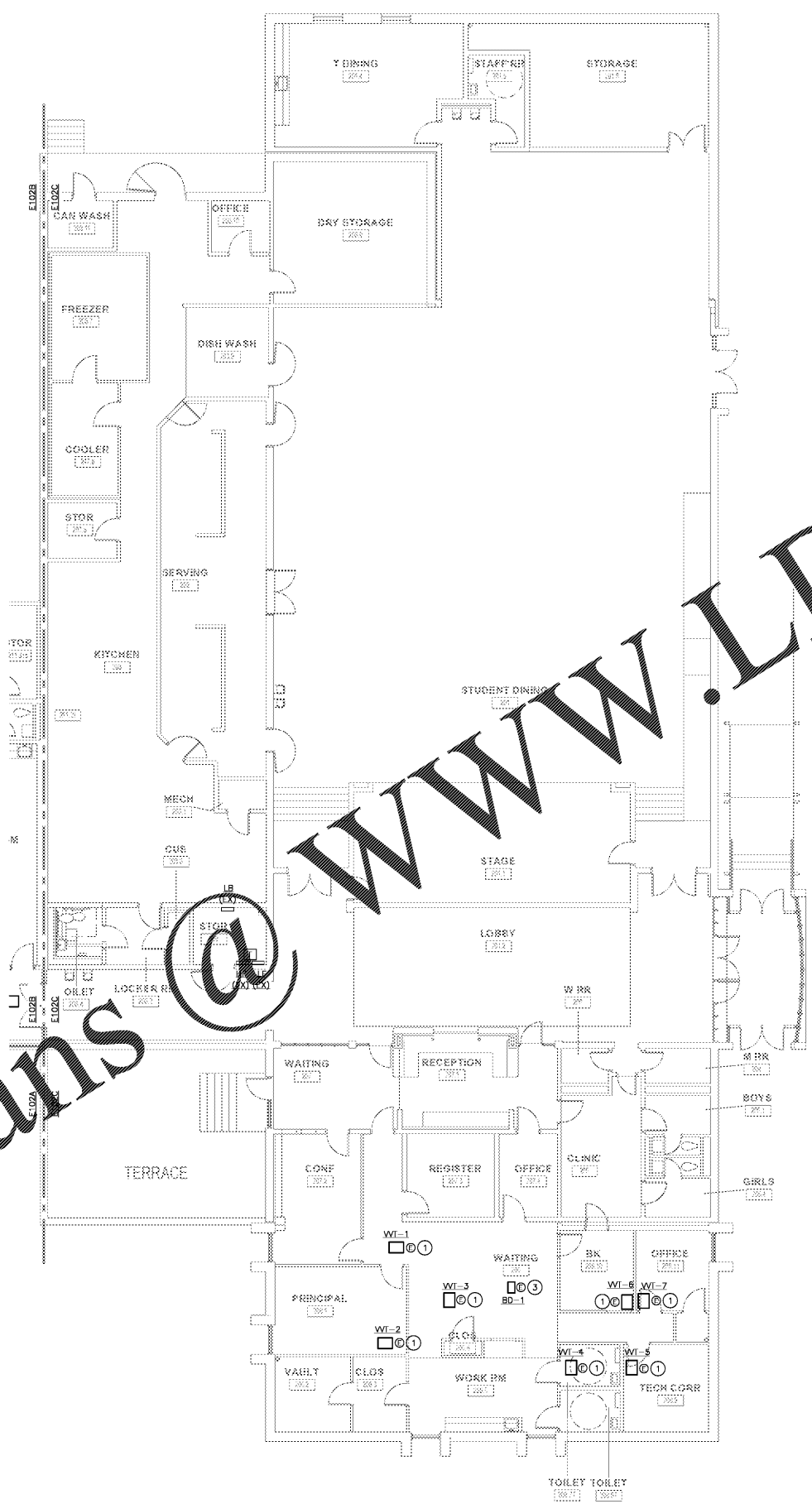
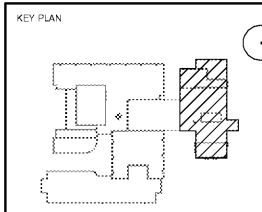
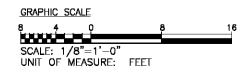
FULTON COUNTY SCHOOL SYSTEM
EVOLINE C. WEST ELEMENTARY SCHOOL
- RENOVATIONS
7040 RIVERTOWN RD
FAIRBURN, GA 30213

- GENERAL NOTES:**
- CONTRACTOR SHALL FIELD VERIFY EXACT CIRCUITS SERVING EXISTING MECHANICAL EQUIPMENT.
 - COORDINATE SAFETY SWITCH, MANUAL MOTOR STARTER AND OTHER WIRING DEVICES WITH FIELD CONDITIONS. INSTALL DISCONNECTING MEANS AS CLOSE TO EQUIPMENT AS POSSIBLE. DISCONNECTS SERVING ABOVE CEILING EQUIPMENT SHALL BE INSTALLED ABOVE CEILING.
 - ALL EXISTING ELECTRICAL EQUIPMENT IS EXISTING TO REMAIN, UNLESS OTHERWISE NOTED.

- DRAWING NOTES:**
- RECONNECT EXISTING CIRCUIT TO NEW VVI. PROVIDE 20A, 1P MOTOR RATED SWITCH FOR DISCONNECTING MEANS. EXTEND CIRCUIT AND CONDUIT AS REQUIRED.
 - USED
 - RECONNECT EXISTING CIRCUIT TO NEW BYPASS BREAKER. PROVIDE 20A, 1P MOTOR RATED SWITCH FOR DISCONNECTING MEANS. EXTEND CIRCUIT AND CONDUIT AS REQUIRED.
 - USED

PROJECT NO: 18048.00

50% CD	08/07/2019
55% CD - re-submit	1/20/2019
90% CD	3/04/2019
PERMIT SET	1/15/2019
BID SET	12/20/2018



ELECTRICAL POWER PLAN - UPPER LEVEL
SCALE: 1/8" = 1' 0"

SHEET TITLE
ELECTRICAL POWER PLAN - UPPER LEVEL

SHEET NUMBER
E102C

Order Plans @ www.LDILine.com