



HALLBERG ENGINEERING
 Mechanical/Electrical Consulting Engineers
 1750 Commerce Court
 White Bear Lake, MN 55110
 (651) 748-1100 Fax (651) 748-8370



These drawings are instruments of the Architect's service and are the property of LGA Partners, LP. They shall not be reproduced or used in any way, whatsoever, without the written permission of LGA Partners, LP. © 2019

SECURITY DEVICE LEGEND

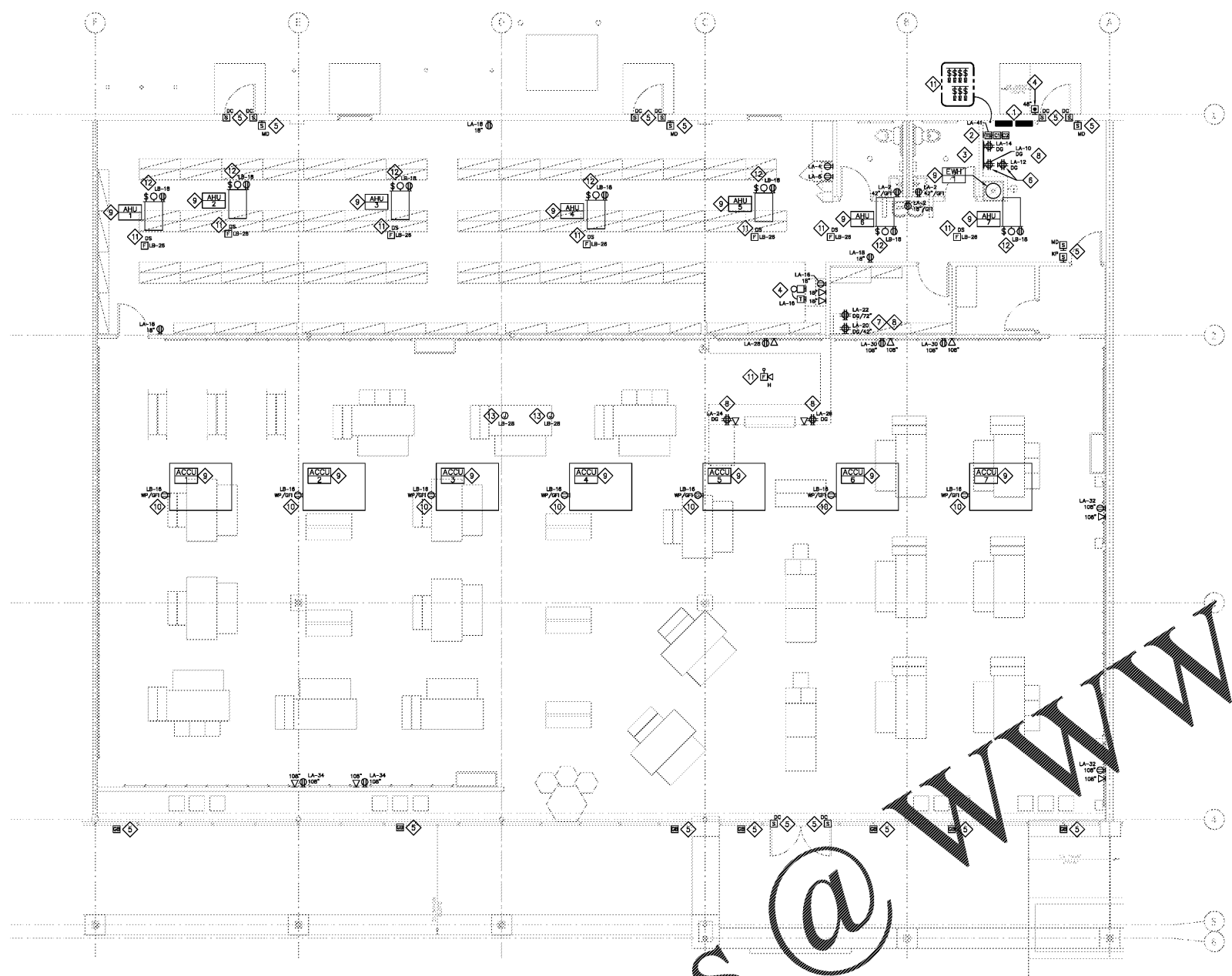
SYMBOL	DESCRIPTION
	DOOR CONTACT
	WALL MOUNTED MOTION DETECTOR
	SECURITY SYSTEM KEYPAD

GENERAL NOTES

- CONTRACTOR SHALL COMPLETELY REMOVE ALL EQUIPMENT, PANELBOARDS, DEVICES, FIXTURES, WIRING, CONDUIT, ETC. AND ALL ASSOCIATED SUPPORTS, BRACING, PADS, ETC. NOT BEING REUSED OR SHOWN TO REMAIN WHETHER IN THE DEMISED SPACE, ON THE ROOF OR OTHERWISE LOCATED OUTSIDE OF THE DEMISED SPACE. DO NOT ABANDON IN PLACE.
- ALL 120 VOLT BRANCH CIRCUITS IN EXCESS OF 75' SHALL HAVE CONDUCTOR SIZE INCREASED A MINIMUM OF 1 CONDUCTOR SIZE. INSTALLING CONTRACTOR SHALL DETERMINE ACTUAL CONDUCTOR SIZE TO BE INSTALLED TO ADHERE TO VOLTAGE DROP REQUIREMENTS.
- PROVIDE A NEUTRAL CONDUCTOR FOR EACH BRANCH CIRCUIT. NEUTRAL SHARING IS NOT ALLOWED.
- ELECTRICAL SYSTEM SHALL BE GROUNDED AND BONDED PER NEC REQUIREMENTS AND AUTHORITY HAVING JURISDICTION.
- ALL LOW VOLTAGE WIRING FOR POS, DATA AND TELEPHONE SHALL BE RUN IN OPEN AIR UTILIZING PLENUM RATED CABLE UNLESS REQUIRED BY CODE OR AUTHORITY HAVING JURISDICTION TO BE INSTALLED IN CONDUIT.

KEY NOTES

- ELECTRICAL SERVICE EQUIPMENT LOCATION, REFER PANEL SCHEDULES AND POWER RISER DIAGRAM ON SHEET 1/ED.0.
- LOCATION OF TIME SWITCH AND CONTACTORS, REFER TO SHEET ET/POS FOR FURTHER INFORMATION.
- PROVIDE 3/4" THICK FIRE TREATED PLYWOOD BACKBOARD TO TENANT'S SECURITY AND TELEPHONE EQUIPMENT. COORDINATE EXACT REQUIREMENTS PRIOR TO BID.
- PROVIDE DOOR BELL SYSTEM WITH (1) TRANSFORMER, (1) SURFACE MOUNTED W.P. PUSHBUTTON AT REAR DOOR, (1) BELL LOCATED IN BACK OF HOUSE, EDWARDS 340-24VAC BELL, 592 TRANSFORMER, 895-3 WEATHERPROOF PUSHBUTTON, 1/2" FACE PLATE. LOCATIONS SHOWN FOR REFERENCE ONLY AND NEED TO BE COORDINATED PRIOR TO ROUGH-IN.
- PROVIDE 3/4" CONDUIT FROM SECURITY HEAD-END EQUIPMENT IN BACK OF HOUSE TO SECURITY DEVICE LOCATIONS SHOWN. COORDINATE EXACT FINISHING HEIGHTS AND LOCATIONS WITH TENANT'S SECURITY VENDOR PRIOR TO ROUGH-IN. PROVIDE PLENUM RATED LOW VOLTAGE CABLE AND TRAY SYSTEM HEAD-END TO EACH SECURITY DEVICE LOCATION. PROVIDE 24" ADDITIONAL LOW VOLTAGE CABLE SERVICE LOOP AT EACH LOCATION. COORDINATE LOW VOLTAGE CABLE TYPE WITH SECURITY VENDOR. SECURITY EQUIPMENT IS SHOWN FOR REFERENCE ONLY. SECURITY DEVICES (DOOR CONTACTS, KEY PADS, GLASS BREAKS, MOTION DETECTORS, ETC.) ARE FURNISHED AND INSTALLED BY SECURITY VENDOR. FINAL CONNECTIONS TO ALL SECURITY EQUIPMENT ARE BY SECURITY VENDOR.
- DEDICATED QUAD RECEPTACLES FOR VECTOR SECURITY SYSTEM. COORDINATE EXACT LOCATION AND REQUIREMENTS PRIOR TO BID AND ROUGH-IN.
- DEDICATED QUAD RECEPTACLES FOR TENANT'S NETWORK RACK. COORDINATE EXACT LOCATION AND REQUIREMENTS PRIOR TO BID AND ROUGH-IN.
- THE DEDICATED (DO) CIRCUITS NOTED SHALL NOT BE USED FOR ANY OTHER PURPOSE. THE CIRCUITS SHALL NOT SHARE THE NEUTRAL OR GROUND WITH OTHER EQUIPMENT. SEPARATE POWER, NEUTRAL AND DEDICATED GROUND WIRES, MINIMUM SIZE #12 AWG, SHALL BE RUN TO THE CIRCUIT BREAKER PANELBOARD WHERE GROUND WIRE SHALL BE TIED TO THE GROUND TERMINAL ISOLATED FROM NEUTRAL. DO NOT USE THE CONDUIT FOR GROUNDING. DEDICATED OUTLETS SHALL BE HUBBELL NO. IQ-5382, OR APPROVED EQUAL.
- MECHANICAL EQUIPMENT, REFER TO MECHANICAL EQUIPMENT SCHEDULE ON SHEET ED.0 FOR FURTHER INFORMATION. LOCATIONS ARE SHOWN FOR REFERENCE ONLY AND NEED TO BE COORDINATE IN THE FIELD.
- PROVIDE WP/GFI DUPLEX RECEPTACLE AT ROOFTOP HVAC UNIT. REUSE EXISTING IF APPLICABLE.
- E.C. TO FURNISH DUCT SMOKE DETECTOR. DETECTOR TO BE COMPLETE WITH AUXILIARY CONTACTS, BASE SAMPLING TUBES AND REMOTE STATUS INDICATOR/RESET SWITCH AND LOCAL AUDIBLE ALARM. SIMPLEX OR EQUAL DETECTOR INSTALLED BY MECHANICAL CONTRACTOR. PROVIDE A J-BOX FOR POWER CONNECTION TO DUCT SMOKE DETECTORS. ELECTRICAL CONTRACTOR SHALL MAKE FINAL POWER AND CONTROL CONNECTIONS. INSTALL ALARM ABOVE CEILING NEAR CASHWRAP AREA. VERIFY LOCATION OF VISUAL INDICATOR LIGHTS. INTERLOCK RTU STARTER SO UNIT SHUTS DOWN IN EVENT OF DUCT DETECTOR ACTIVATION. LOCATE RESET SWITCH (RS) ADJACENT TO ELECTRICAL PANELS.
- PROVIDE DUPLEX RECEPTACLE, CERAMIC LIGHT SOCKET WITH LED A19 LAMP AND ON/OFF SWITCH ADJACENT TO EACH AIR HANDLING UNIT.
- PROVIDE J-BOX AND 120V CIRCUIT AS INDICATED FOR CONNECTION TO MOTORIZED DAMPER. COORDINATE EXACT LOCATION WITH MECHANICAL CONTRACTOR.



1 POWER PLAN
 3/16" = 1'-0"

Order Plans @ www.LDILines.com

NO.	DATE	DESCRIPTION

POWER PLAN

E2.0