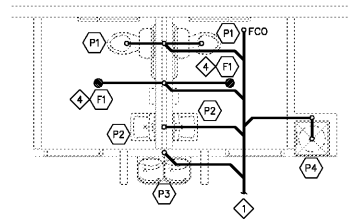
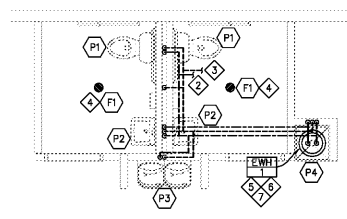


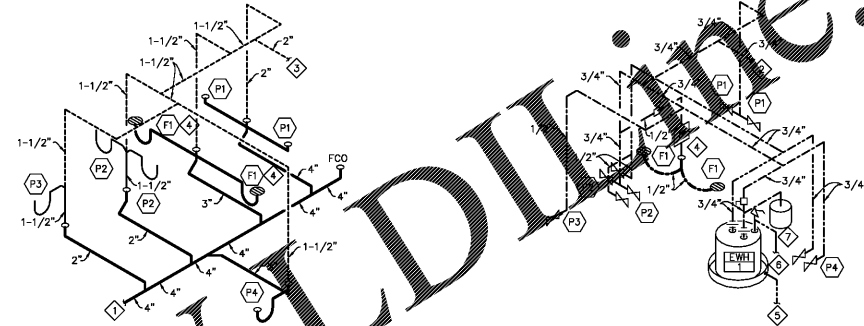
WESLEY CHAPEL
 CROSSING
 SPACES 11, 12, 13 & 14
 2440 WESLEY CHAPEL
 ROAD
 DECATUR, GA 30035



1 UNDERFLOOR PLUMBING PLAN
 1/4" = 1'-0"

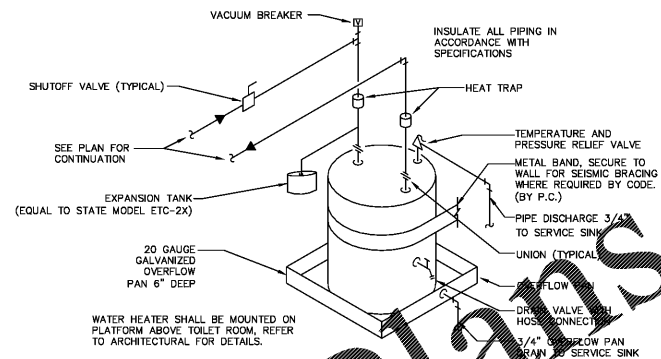


2 ABOVE FLOOR PLUMBING PLAN
 1/4" = 1'-0"



3 WASTE AND VENT RISER
 N.T.S.

4 WATER RISER
 N.T.S.



5 WATER HEATER DETAIL
 NO SCALE

KEY NOTES

1. EXTEND AND CONNECT NEW 4" SANITARY SEWER PIPING TO EXISTING 4" (MIN) LANDLORD PROVIDED SANITARY SEWER PIPING. FIELD VERIFY EXACT LOCATION, FLOW DIRECTION, AND INVERT ELEVATION OF CONNECTION POINT PRIOR TO ROUGH-IN OF NEW SANITARY SEWER. PROVIDE FOO AT POINT OF CONNECTION TO EXISTING.
2. EXTEND AND CONNECT NEW 3/4" CW PIPING TO EXISTING 3/4" (MIN) LANDLORD PROVIDED CW PIPING. FIELD VERIFY EXACT LOCATION OF CW PIPING PRIOR TO ROUGH-IN. PROVIDE SHUTOFF VALVE AT POINT OF CONNECTION TO EXISTING.
3. EXTEND AND CONNECT NEW 2" VENT PIPING TO EXISTING LANDLORD PROVIDED 2" (MIN) VENT STUB. FIELD VERIFY EXACT LOCATION AND SIZE OF VENT STUB PRIOR TO ROUGH-IN OF NEW VENT SYSTEM.
4. PROVIDE JOSAM 88250 OR EQUAL TRAP PRIMER WITH ACCESSIBLE SHUT-OFF VALVE.
5. PIPE DRIP PAN FULL SIZE TO AIR GAP OVER FLOOR DRAIN/MOP SINK.
6. PIPE 3/4" FROM ASME RATED T&P VALVE TO AIR GAP OVER FLOOR DRAIN/MOP SINK.
7. PROVIDE THERMAL EXPANSION TANK EQUAL TO STATE MODEL ETC-2X. ADJUST EXPANSION TANK AIR CHARGE TO MATCH INCOMING WATER PRESSURE. (FIELD VERIFY).

GENERAL NOTES

- A. SUBCONTRACTOR TO VERIFY POINT OF CONNECTION AND SCOPE OF WORK TO INSTALL ALL PLUMBING PIPING & EQUIPMENT TO SPACE PRIOR TO BID. IF INCONSISTENCIES OCCUR BETWEEN PLANS AND LANDLORD CRITERIA, OWNER'S CONSTRUCTION MANAGER SHALL BE NOTIFIED PRIOR TO BID SUBMITTAL.
- B. ALL OTHER EXISTING RESTROOMS AND PLUMBING TO BE REMOVED AND CAPPED.

ELECTRIC WATER HEATER SCHEDULE								EW#	S	PT
UNIT NO.	MANUFACTURER	MODEL	KW	CAPACITY (GAL.)	STAGES	VOLTAGE	OUTPUT (GPH @ 95° RISE)	REMARKS		
EW-1	A.O. SMITH	DEL-10	1.5	10	1	120/1/60	7	REFER TO DETAIL 5/P1		

TOILET ROOM COMPONENT SCHEDULE				
Item	Model	Exist. To Remain	New (Add/Replace)	Notes
Toilet	See Plumbing Fixture Schedule	-	2	--
Toilet Seat	See Plumbing Fixture Schedule	-	2	--
Sink	See Plumbing Fixture Schedule	-	2	--
Sink Faucet	See Plumbing Fixture Schedule	-	2	--
Pipe Wrap	See Plumbing Fixture Schedule	-	2	--
Water Heater	See Water Heater Schedule	-	1	Tank
Map Sink	See Plumbing Fixture Schedule	-	1	--
Water Cooler	See Plumbing Fixture Schedule	-	1	Hi/Lo Combination
Floor Drain	See Plumbing Fixture Schedule	-	2	--

PLUMBING FIXTURE SCHEDULE											
FIXTURE NO.	FIXTURE TYPE	MANUFACTURER	TYPE & MODEL NO.	TRIM/FAUCET NO.	SUPPORT	PIPE SIZES					REMARKS
						TRAP	WASTE	VENT	CW	HW	
P1	WATER CLOSET	KOHLER	HIGHLINE (WHITE) K-5560	CHICAGO FAUCET 0116	FLOOR MOUNT	-	4"	2"	1/2"	-	1.6 GPM, ADA COMPLIANT 17" RIM HEIGHT, PROVIDE WHITE STRONGHOLD SEAT MODEL K-4731, ELONGATED BOWL. FLUSH LEVER ON ACCESSIBLE SIDE, CHROME TRIP LEVER.
P2	LAVATORY	ZURN	Z5344	ZURN FAUCET Z86680	WALL HUNG	1-1/2"	1-1/2"	1-1/2"	1/2"	1/2"	PROVIDE INSULATED CAST BRASS P-TRAP, HANDICAP INSULATION KIT, SUPPLY STOPS & TUBES, DRAIN KIT, TAILPIECE, GOOSE NECK FAUCET, SELF-CLOSING, 0.5 GPM FLOW LIMIT, BI-LEVEL WALL MOUNTED COOLER, 8.0 GPH @ 90 DEGREE AMBIENT, FILTRATION SYSTEM, STANDARD CABINET FINISH.
P3	HI-LO WATER COOLER	DASIS	PGBACSL	-	WALL MOUNT	1-1/2"	1-1/2"	1-1/2"	1/2"	-	PROVIDE 1/2" TRAP PRIMER CONNECTION WHERE INDICATED ON PLANS. POLISHED NICKEL BRONZE TOP, TYPE "N" STRAINER.
P4	SERVICE SINK	FIAT	MOLDED STONE MSB-2424	ZURN Z843M1	FLOOR MOUNT	3"	3"	1-1/2"	3/4"	3/4"	
F1	FLOOR DRAIN	ZURN	Z-415	-	-	3"	3"	1-1/2"	-	-	

Order Plans

WWW.DTLR.com



HALLBERG ENGINEERING
 Mechanical/Electrical Consulting Engineers
 1750 Commerce Court
 White Bear Lake, MN 55110
 (651) 748-1100 Fax (651) 748-8570



These drawings are instruments of the Architect's service and are the property of LGA Partners LP. They shall not be reproduced or used in any way, whatsoever, without the written permission of LGA Partners LP. © 2019

NO.	DATE	DESCRIPTION

DATE: 12-20-2019
 DRAWN BY: KMH
 CHECKED BY: MDB
 PROJECT NO.: R19-3725-000

PLUMBING PLAN